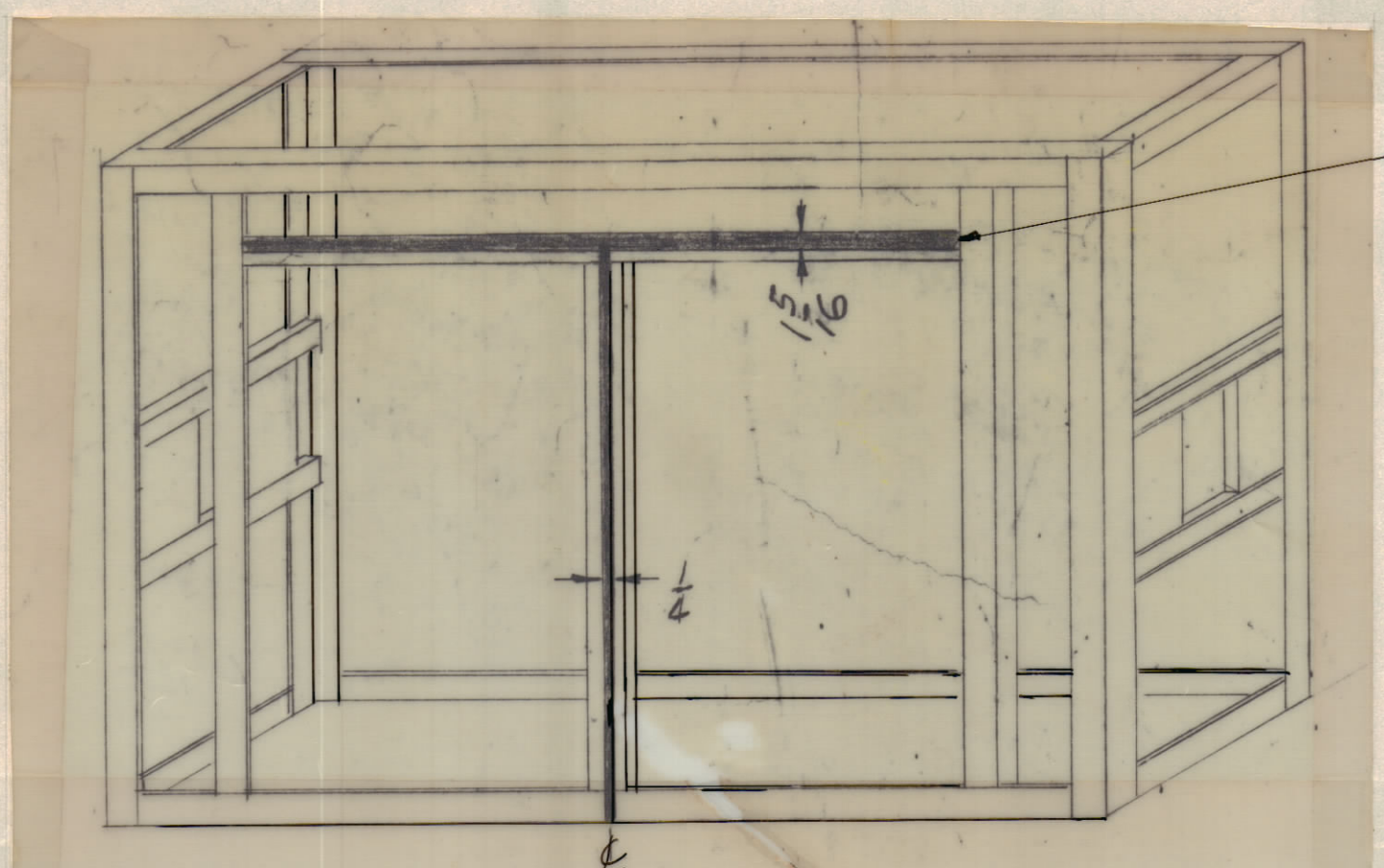
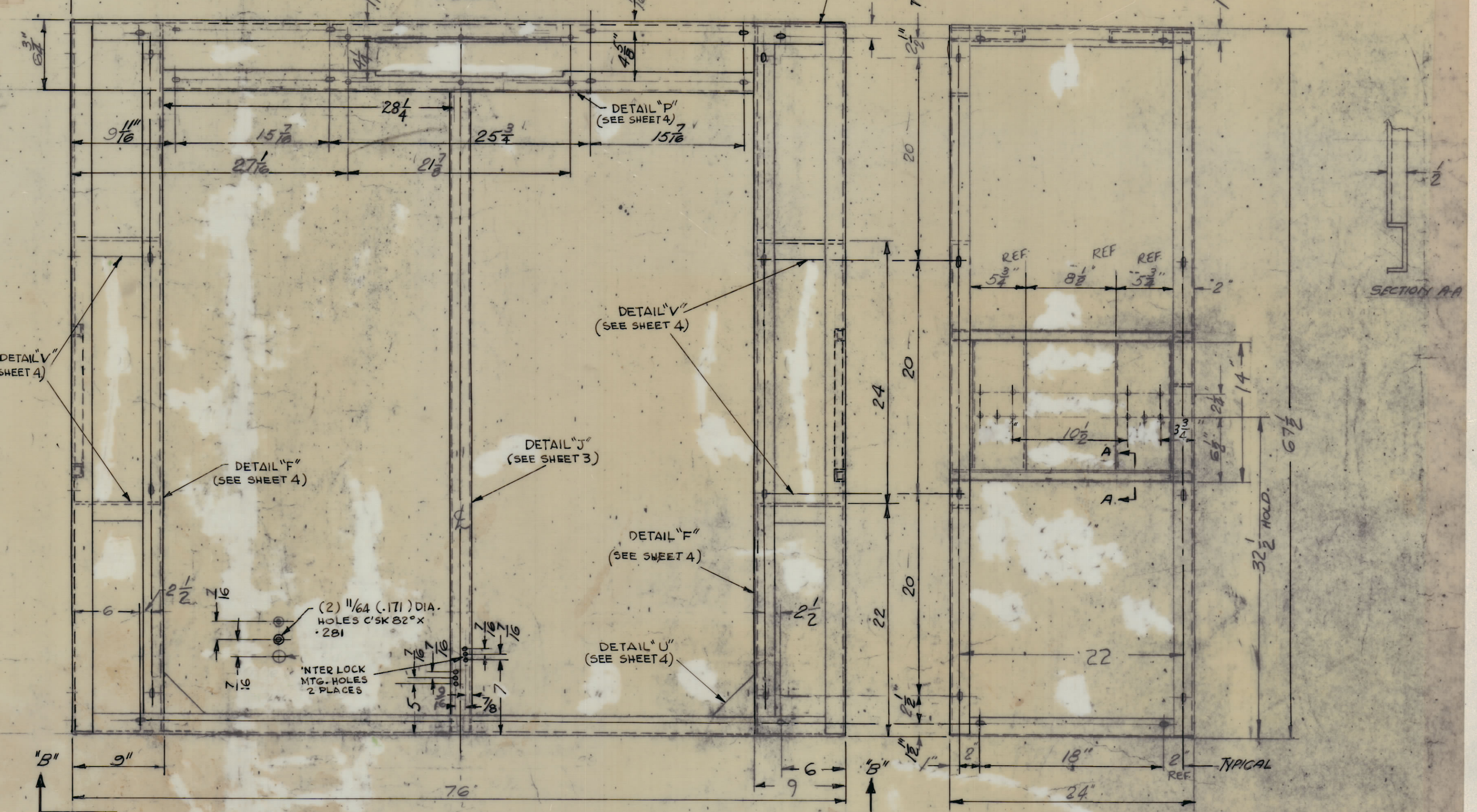
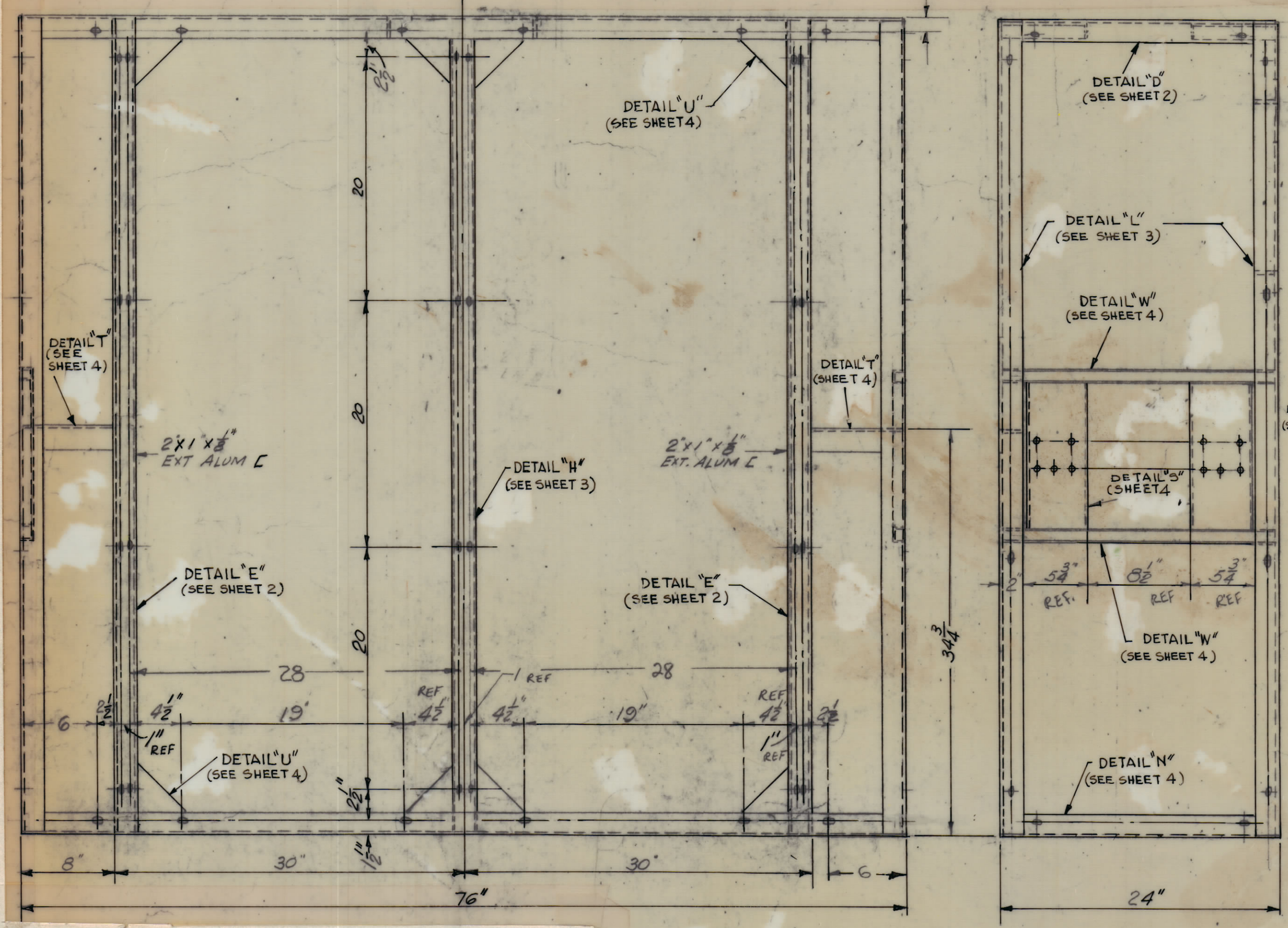
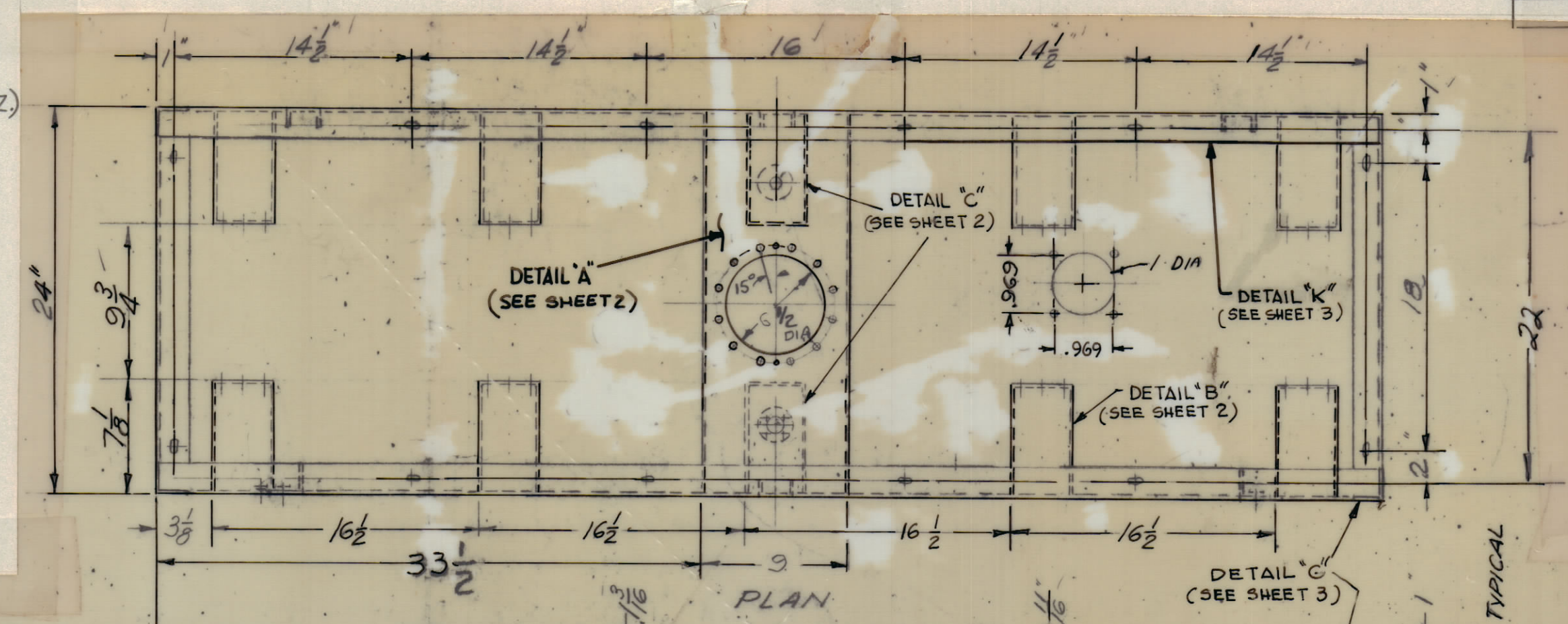


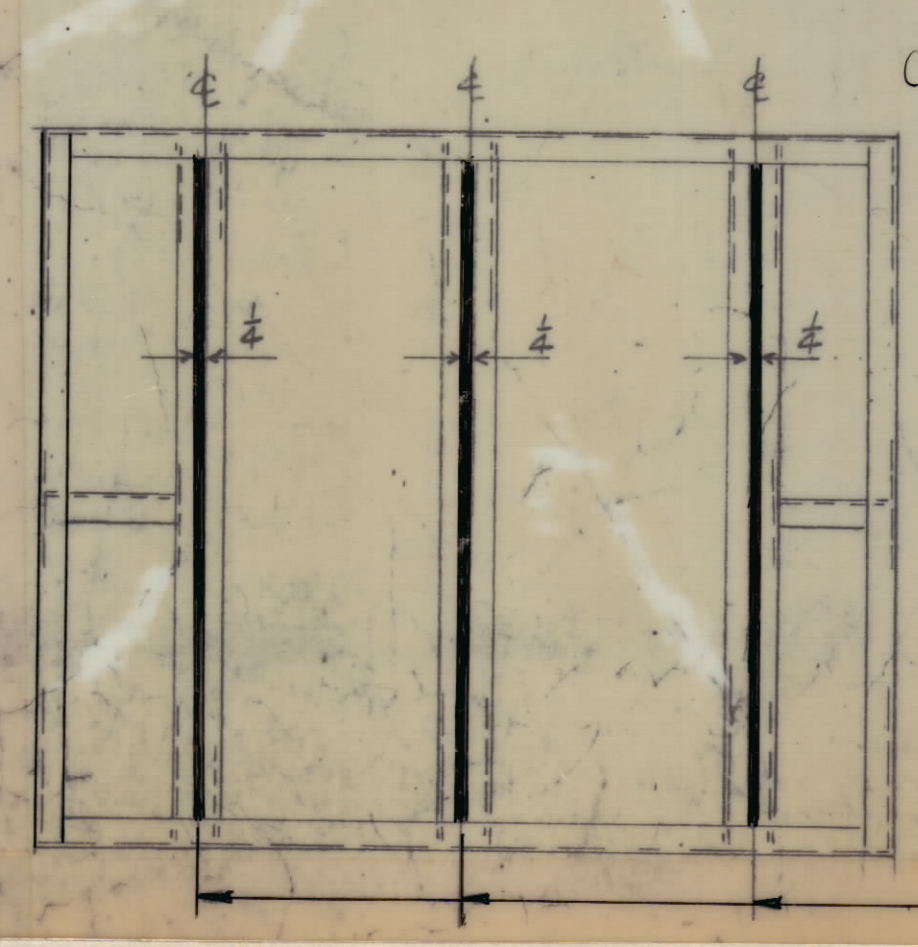
ZONE		SYM	DESCRIPTION	DATE	E.M.N. NO.	DRAFT	CHKD	APPD
X2			SHEET 2,3,4 ADDED	10-7-61				
Ø			ORIGINAL RELEASE FOR PRODUCTION	12/1/65				



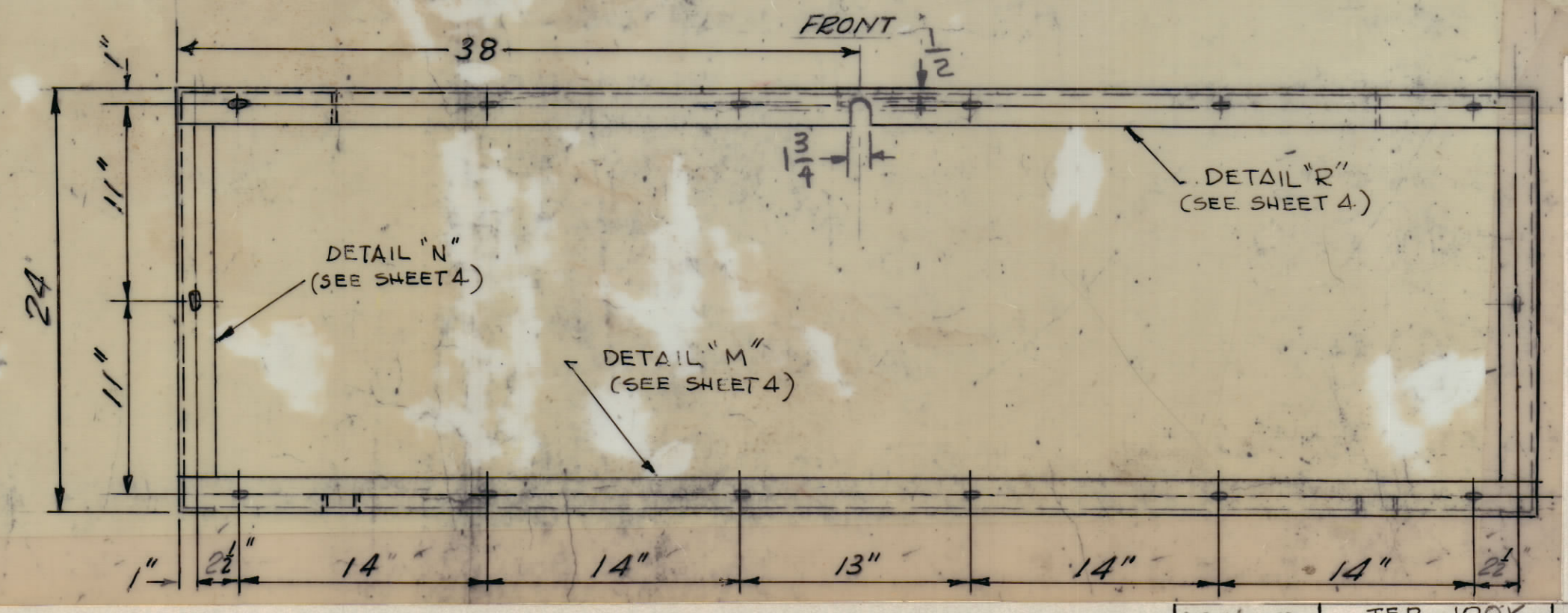
BLUE TEXTURED TO BE APPLIED AS SHOWN.
 1/4" WIDE STRIP (RUNNING VERT.)
 1-5/16" WIDE STRIP (RUNNING HORIZ.)



- UNLESS OTHERWISE SPECIFIED
1. X CONSTRUCTION 2x1x1/8" THICK ALUM. EXTRUDED, 6063-T5
 2. MOUNT ALL INSERTS AFTER FINISHING.
 3. ALL WELD JOINTS TO BE VEE'D OUT PRIOR TO WELDING.
 4. WELDING TO BE PER MIL-T-5021C, TUNGSTEN INERT GAS PROCESS.
 5. ALL JOINTS SHOULD BE WELDED INSIDE AND OUTSIDE.
 6. ALL OUTSIDE WELDS TO BE GROUND FLUSH
 7. OUTSIDE SURFACES TO BE REASONABLY FREE OF SCRATCHES AND TOOL MARKS AND HAVE A SURFACE ROUGHNESS NOT TO EXCEED .25



LEFT SIDE
(PART TYPICAL ON RIGHT SIDE)



RIGHT SIDE
(SEE LEFT SIDE)

PAINT 1/4" STRIP AT REAR AS SHOWN

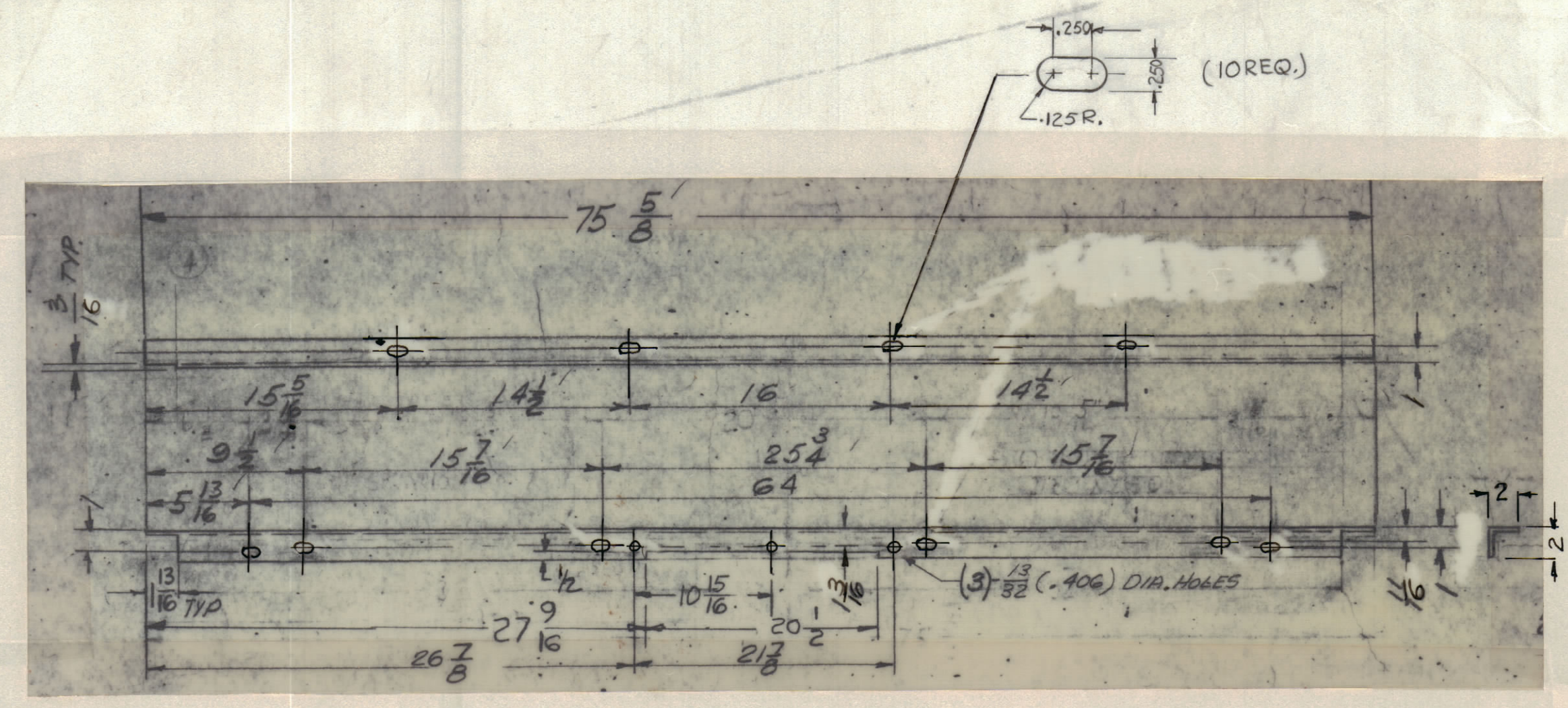
NOTE:
ALL DIMENSIONS TO HOLES & SLOTS MUST BE HELD

REQ'D.	ITEM	PART NUMBER	DESCRIPTION	SYMBOL	
BUDETTI LIST OF MATERIAL					
MATERIAL			THE TECHNICAL MATERIEL CORP.		
AS NOTED SHEETS 1 THRU 4			MAMARONECK, NEW YORK		
FINISH			TITLE		
(5404) YEL. IRIDITE			MACHINING, FRAME, TER-100K		
AS NOTED		TER-100K	ASSY. NO.		
SCALE	DO NOT SCALE	CODE	S401-189	DATE	7-265
THE CONTENTS OF THIS DRAWING ARE THE EXCLUSIVE PROPERTY OF THE TECHNICAL MATERIEL CORP. ITS UNAUTHORIZED USE OR REPRODUCTION IN WHOLE OR IN PART IS STRICTLY FORBIDDEN.			DECIMALS	XXX ± .005	TOLERANCES
			FRACTIONS	± 1/64	ANGLES
				± 0° 30'	
			ELECT. DES.	DATE	12/1/65
			MECH. DES.	DATE	10/3/65
			DATE		MS 3140
			SHEET		1 OF 4
			REV. LTR.		

NOTES

MS 3140
SHEET 1 OF 4

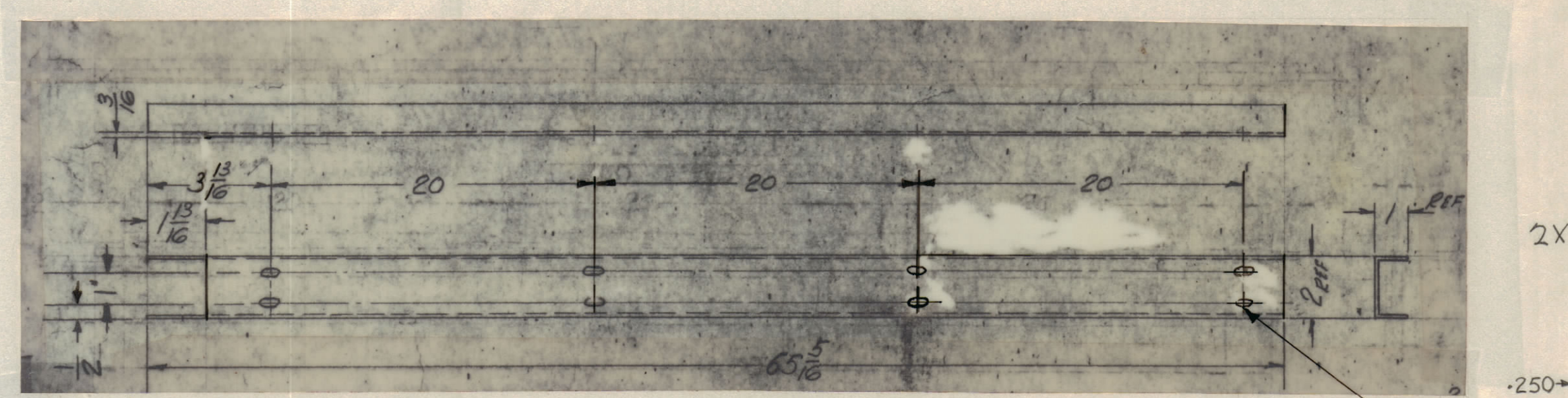
REVISIONS						
ZONE	SYM	DESCRIPTION	DATE	E.M.N. NO.	DRAFT	CHKD
X2		SEE SHT ①	10-7-65			
Ø		ORIGINAL RELEASE FOR PRODUCTION	10/7/65			



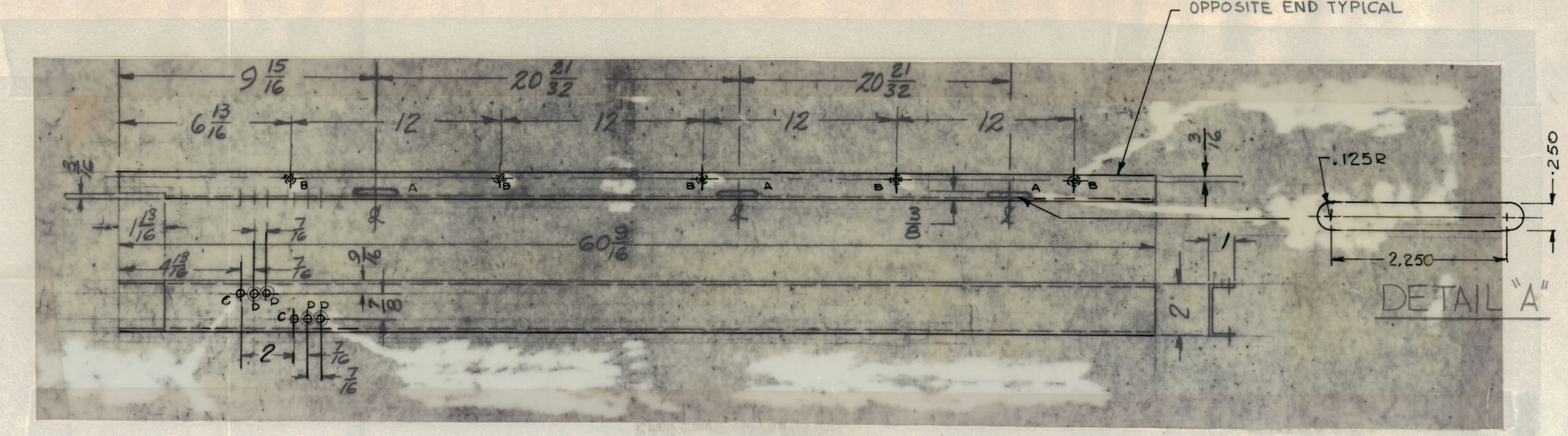
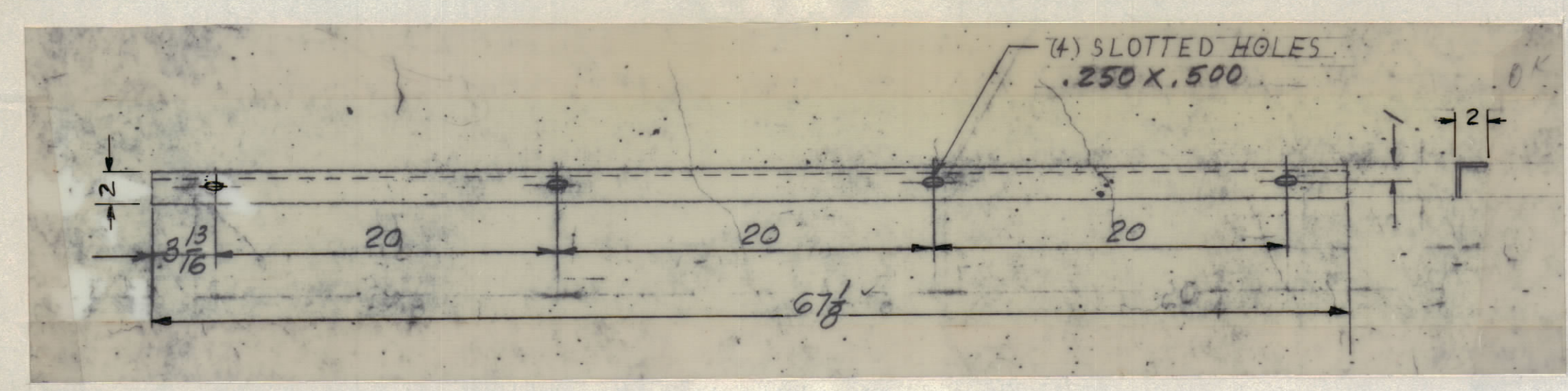
- DETAIL "G" - (1REQ.)
 ANGLE FRAME
 2X 2X 3/16 EXTRUDED ALUMINUM
 (6063-T5)
 NOTE:
 FINISH UPON ASSEMBLY

DETAIL "L"
 4REQ. (2 AS SHOWN &
 2 OPP HAND)
 ANGLE, FRAME
 2X 2X 3/16 EXTRUDED ALUMINUM
 (6063-T5)

NOTE:
 FINISH UPON ASSEMBLY



DETAIL "H"
 (1REQ.)
 "U" CHANNEL
 2X 1X 1/8 EXTRUDED ALUMINUM
 (6063-T5)
 NOTE:
 FINISH UPON ASSEMBLY



DETAIL "A"

HOLE	DESCRIPTION	REQ.
A	SEE DETAIL	6
B	DR & TAP FOR #6-32	10
C	3/8 DIA	2
D	.171 DIA. C'SK 82° TO .281 DIA	4

DETAIL "J"
 (1REQ.)
 "U" CHANNEL
 2X 1X 1/8 EXTRUDED ALUMINUM
 (6063-T5)

NOTE:
 FINISH UPON ASSEMBLY

DETAIL "K"
 (1REQ.)
 ANGLE, FRAME
 2X 2X 3/16 EXTRUDED ALUMINUM
 (6063-T5)

NOTE:
 FINISH UPON ASSEMBLY

NOTES

QTY	UNIT	MODEL USED ON	ASSY. NO.
AS NOTED		TER-100K	
SCALE	DO NOT SCALE	CODE	S401-189

REQ'D.	ITEM	PART NUMBER	DESCRIPTION	SYMBOL
BUDETTI LIST OF MATERIAL				
MATERIAL		AS NOTED	THE TECHNICAL MATERIEL CORP. MAMARONECK, NEW YORK	
FINISH		SEE SHEET 1	TITLE MACHINING, FRAME TER-100K	
SCALE		DO NOT SCALE	DRAWN G.D.L. DATE 7-2-65	
TOLERANCES		DECIMALS ±.05 FRACTIONS ±.01 ANGLES ±.01	CHECKED J.B. DATE 10/6/65	
REPRODUCTION		ELECT. DES. DATE		MECH. DES. DATE
THE CONTENTS OF THIS DRAWING ARE THE EXCLUSIVE PROPERTY OF THE TECHNICAL MATERIEL CORP. ITS UNAUTHORIZED USE OR REPRODUCTION IN WHOLE OR IN PART IS STRICTLY FORBIDDEN.		DATE		REV. LTR.
		SHEET 3 OF 4		REV. LTR.

MS3140

