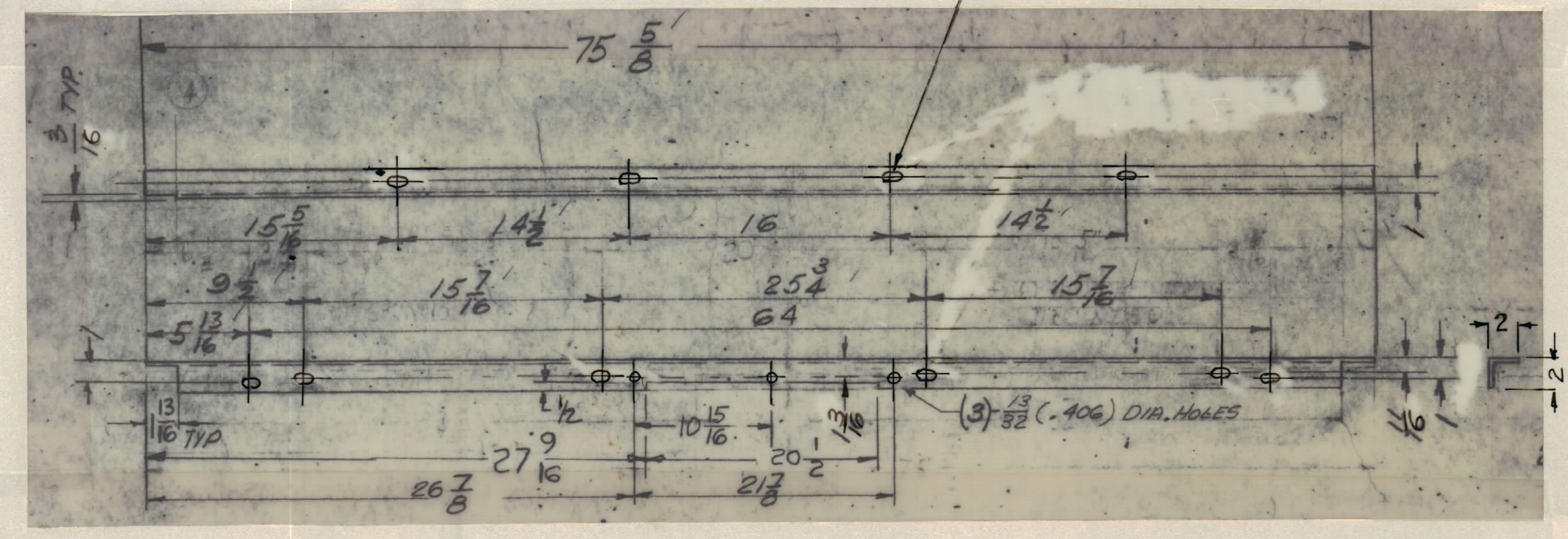


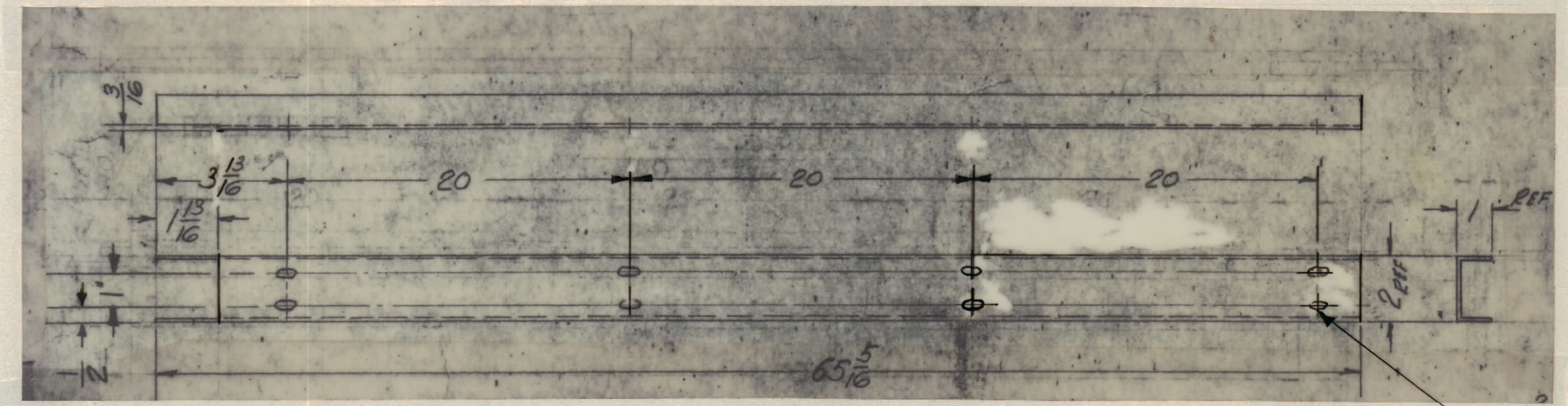
REVISIONS							
ZONE	SYM	DESCRIPTION	DATE	E.M.N. NO.	DRAFT	CHKD	APPD
X	2	SEE SHT ①	10-7-65				
	Ø	ORIGINAL RELEASE FOR PRODUCTION	10/7/65				



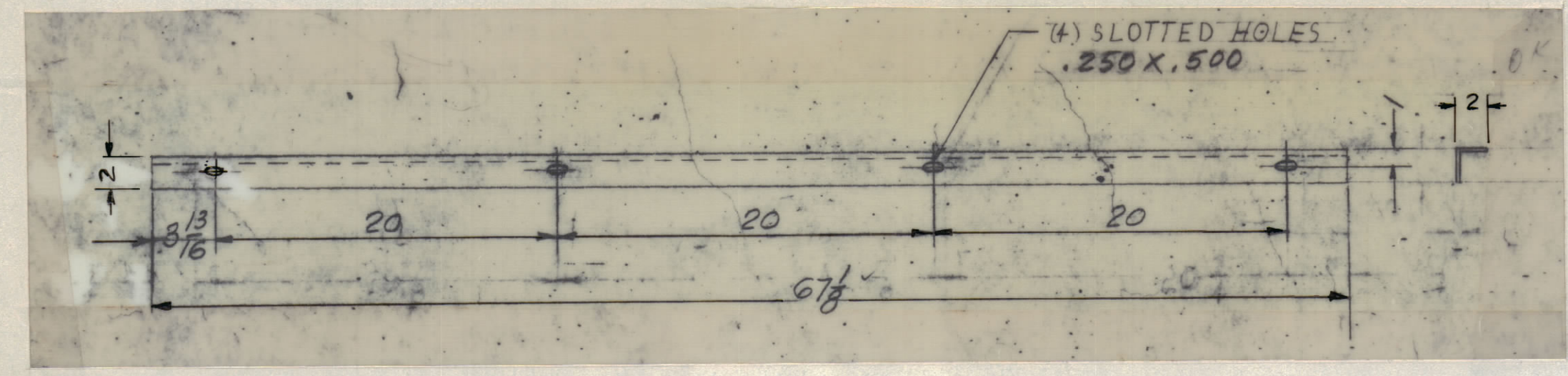
— DETAIL "G" — (1 REQ.)
 ANGLE FRAME
 2X 2X 3/16 EXTRUDED ALUMINUM
 (6063-T5)
 NOTE:
 FINISH UPON ASSEMBLY

DETAIL "L"
 4 REQ. (2 AS SHOWN &
 2 OPP HAND)
 ANGLE, FRAME
 2X 2X 3/16 EXTRUDED ALUMINUM
 (6063-T5)

NOTE:
 FINISH UPON ASSEMBLY

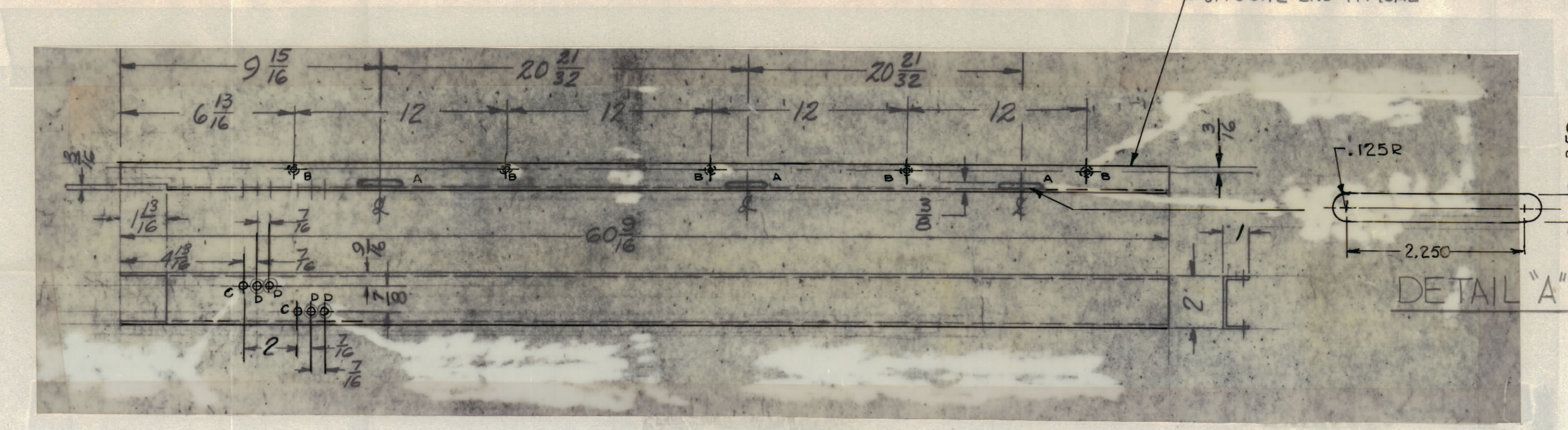


DETAIL "H"
 (1 REQ.)
 "U" CHANNEL
 2X 1X 1/8 EXTRUDED ALUMINUM
 (6063-T5)
 NOTE:
 FINISH UPON ASSEMBLY



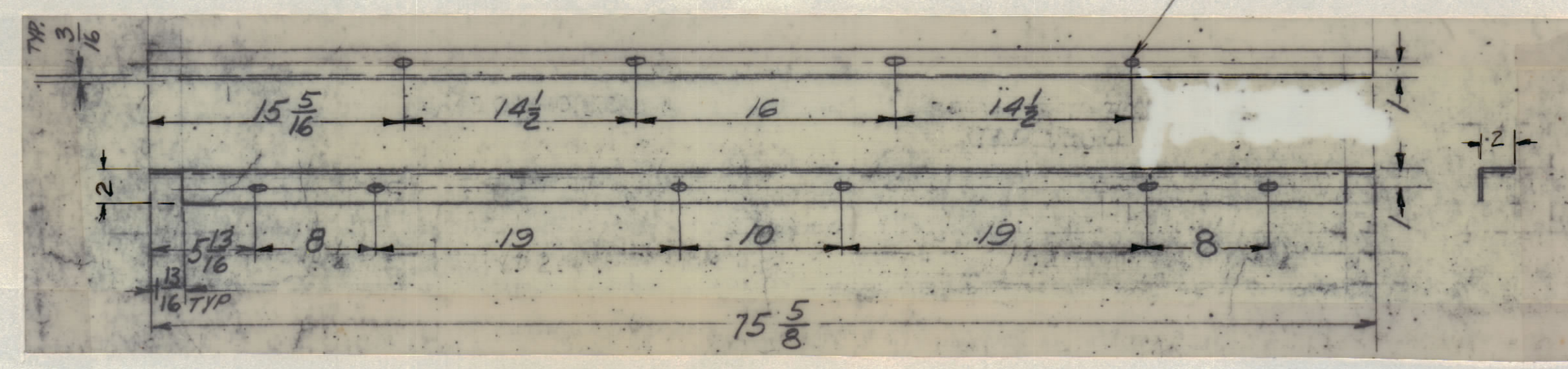
DETAIL "I"
 4 REQ. (2 AS SHOWN &
 2 OPP HAND)
 ANGLE, FRAME
 2X 2X 3/16 EXTRUDED ALUMINUM
 (6063-T5)

NOTE:
 FINISH UPON ASSEMBLY



DETAIL "J"
 (1 REQ.)
 "U" CHANNEL
 2X 1X 1/8 EXTRUDED ALUMINUM
 (6063-T5)
 NOTE:
 FINISH UPON ASSEMBLY

HOLE	DESCRIPTION	REQ.
A	SEE DETAIL	6
B	DR & TAP FOR #6-32	10
C	3/8 DIA	2
D	.171 DIA. C'SK 82° TO .281 DIA	4



DETAIL "K"
 (1 REQ.)
 ANGLE, FRAME
 2X 2X 3/16 EXTRUDED ALUMINUM
 (6063-T5)
 NOTE:
 FINISH UPON ASSEMBLY

NOTES

AS NOTED	TER-100K	ASSY. NO.
SCALE	CODE	S401-189
DO NOT SCALE		

REQ'D.	ITEM	PART NUMBER	DESCRIPTION	SYMBOL
BUDETTI LIST OF MATERIAL				
MATERIAL		AS NOTED	THE TECHNICAL MATERIEL CORP. MAMARONECK, NEW YORK	
FINISH		SEE SHEET 1	TITLE MACHINING, FRAME TER-100K	
SCALE		DO NOT SCALE	DRAWN G.D.L. DATE 7-2-65	
TOLERANCES		DECIMALS X ± .05 XX ± .01 XXX ± .005	CHECKED J.B. DATE 10/6/65	
UNLESS OTHERWISE SPECIFIED DIMENSIONS ARE IN INCHES AND INCLUDE CHEMICALLY APPLIED OR PLATED FINISHES		ELECT. DES. DATE		FINAL APPROVAL [Signature]
THE CONTENTS OF THIS DRAWING ARE THE EXCLUSIVE PROPERTY OF THE TECHNICAL MATERIEL CORP. ITS UNAUTHORIZED USE OR REPRODUCTION IN WHOLE OR IN PART IS STRICTLY FORBIDDEN.		MECH. DES. DATE		REV. LTR.
		SHEET 3 OF 4		MS3140

MS3140
SHEET 4 OF 4