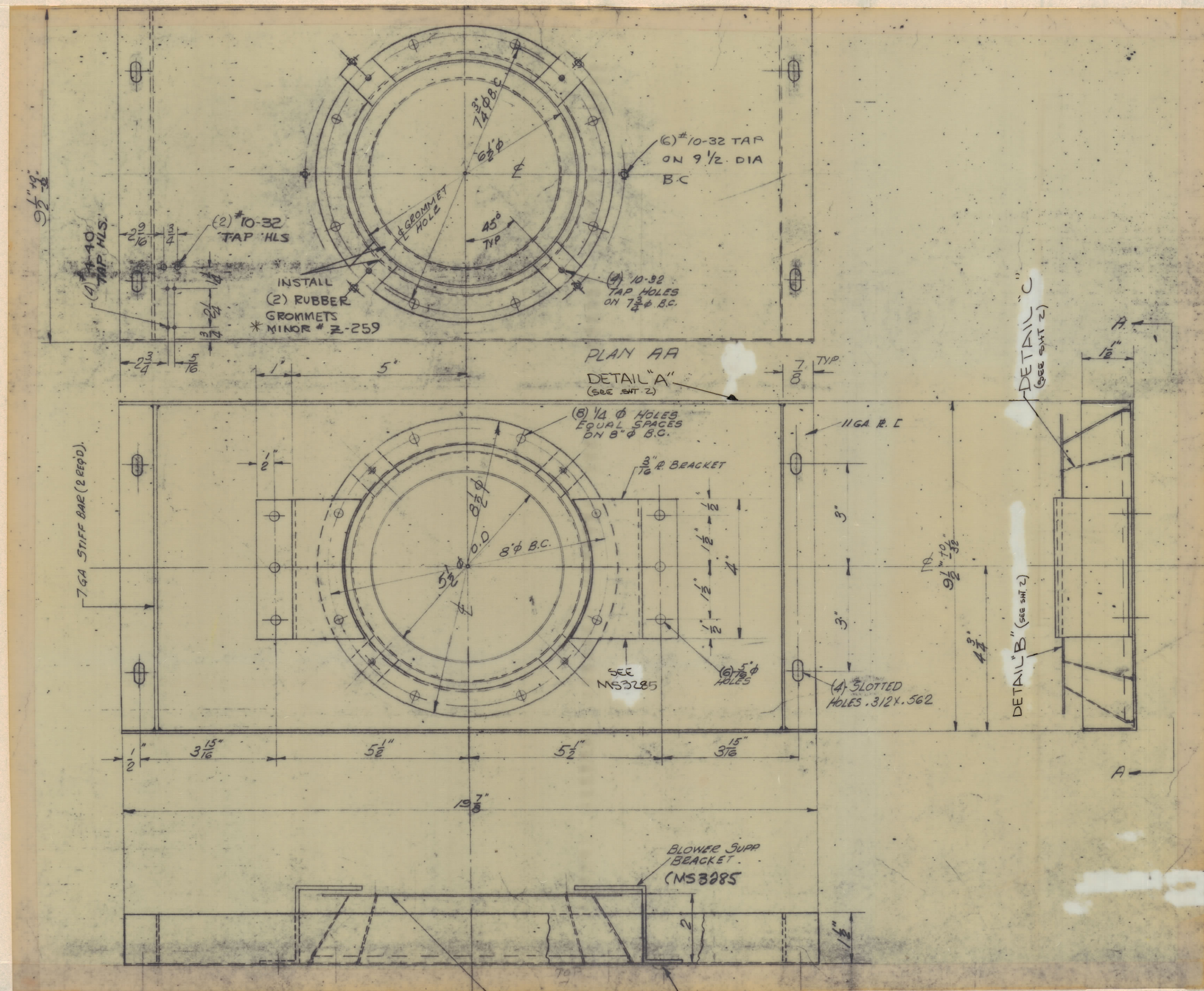


REVISIONS						
ZONE	SYM	DESCRIPTION	DATE	E.M.N. NO.	DRAFT	CHKD
	Ø	ORIGINAL RELEASE FOR PRODUCTION	12/1/65	Ø		JLW



UNLESS OTHERWISE SPECIFIED

1. CONSTRUCTION STEEL
2. MOUNT ALL INSERTS AFTER FINISHING.
3. ALL WELD JOINTS TO BE VEE'D OUT PRIOR TO WELDING.
4. WELDING TO BE PER MIL-T-5021C, TUNGSTEN INERT GAS PROCESS.
5. ALL JOINTS SHOULD BE WELDED INSIDE AND OUTSIDE.
6. ALL OUTSIDE WELDS TO BE GROUND FLUSH.
7. OUTSIDE SURFACES TO BE REASONABLY FREE OF SCRATCHES AND TOOL MARKS AND HAVE A SURFACE ROUGHNESS NOT TO EXCEED  $\sqrt{1.35}$

FINISH NOTES: COPPER FLASH AND CLEAR IRIDITE.5425

- ASSEMBLY MS3285 WITH
- (6) SCBP2520BN12
  - (6) NTH2520BN14
  - (6) FW25HBN
  - (6) LWS25MRN

\* MFG PT NO.

NOTES

AS NOTED	TER-100K	
QTY/UNIT	MODEL USED ON	ASSY. NO.
SCALE	CODE	5401-189
DONOT SCALE		
THE CONTENTS OF THIS DRAWING ARE THE EXCLUSIVE PROPERTY OF THE TECHNICAL MATERIEL CORP. ITS UNAUTHORIZED USE OR REPRODUCTION IN WHOLE OR IN PART IS STRICTLY FORBIDDEN.		

REQ'D.	ITEM	PART NUMBER	DESCRIPTION	SYMBOL
BUDETTI LIST OF MATERIAL				
MATERIAL		THE TECHNICAL MATERIEL CORP. MAMARONECK, NEW YORK		
AS NOTED SHEETS 1 AND 2		TITLE SUPPORT RESISTOR MOUNTING		
FINISH		SEE NOTE THIS SHT.		
DRAWN	ENJZA	DATE	9/17/65	FINAL APPROVAL
CHECKED	JLB	DATE	10/6/65	DATE
ELECT. DES.		DATE		DATE
MECH. DES.		DATE		DATE
MS3137				REV. LTR.
SHEET 022				REV. LTR.

MS3137



