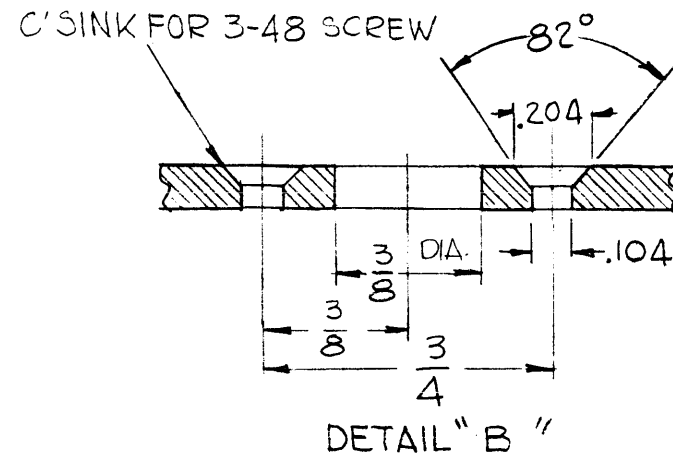
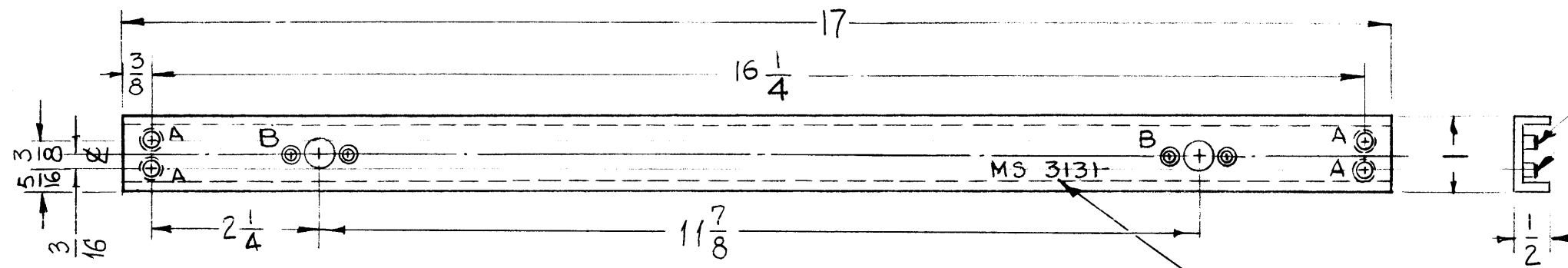


HOLE	DESCRIPTION	REQ'D
A	.194-.191 DIA.	4
B	SEE DETAIL "B"	2



MS 3131

REVISIONS						
SYM	DESCRIPTION	DATE	E.M.N. NO.	DRAFT	CHKD	APPD
X1	MODEL WAS GPT-10KLF	2-17-66	X1	Jc		
Ø	ORIGINAL RELEASE FOR PRODUCTION	2-17-66	-M	Jc		



① MOUNT IN ALL "A" HOLES ITEM (1) AS SHOWN AFTER FINISHING

MARK TMC PART NO. 1/8 HIGH GOTHIC AS SHOWN WITH LATEST REVISION LETTER.

4	1	NT-129-632-6	NUT, ROUND, SWAGE TYPE	A
REQ'D.	ITEM	PART NUMBER	DESCRIPTION	SYMBOL

O. POSE		LIST OF MATERIAL	
MATERIAL EXTRUDED ALUMINUM CHANNEL 1/2 X 1" X 1/2 X 1/8 THK		THE TECHNICAL MATERIEL CORP. MAMARONECK, NEW YORK	
FINISH 3404- YEL. IRIDITE		TITLE SUPPORT, COVER, TOP IPA DRIVER DRAWER	
UNLESS OTHERWISE SPECIFIED DIMENSIONS ARE IN INCHES AND INCLUDE CHEMICALLY APPLIED OR PLATED FINISHES		DRAWN G.D.L. DATE 3-29-63	FINAL APPROVAL [Signature] DATE 2/17/66
DECIMALS .X ± .05 .XX ± .01 .XXX ± .005		CHECKED [Signature] DATE 12-1-65	MS 3131 Ø
TOLERANCES ± 1/64 ANGLES ± 0° 30'		ELECT. DES. DATE	
		MECH. DES. DATE	SHEET
		MIL Allen 2/17/66	REV. LTR.

2	VLLA-1	A5328
Q'TY./UNIT	MODEL USED ON	ASS'Y. NO.
SCALE 1/2	CODE	
THE CONTENTS OF THIS DRAWING ARE THE EXCLUSIVE PROPERTY OF THE TECHNICAL MATERIEL CORP. ITS UNAUTHORIZED USE OR REPRODUCTION IN WHOLE OR IN PART IS STRICTLY FORBIDDEN.		

NOTES