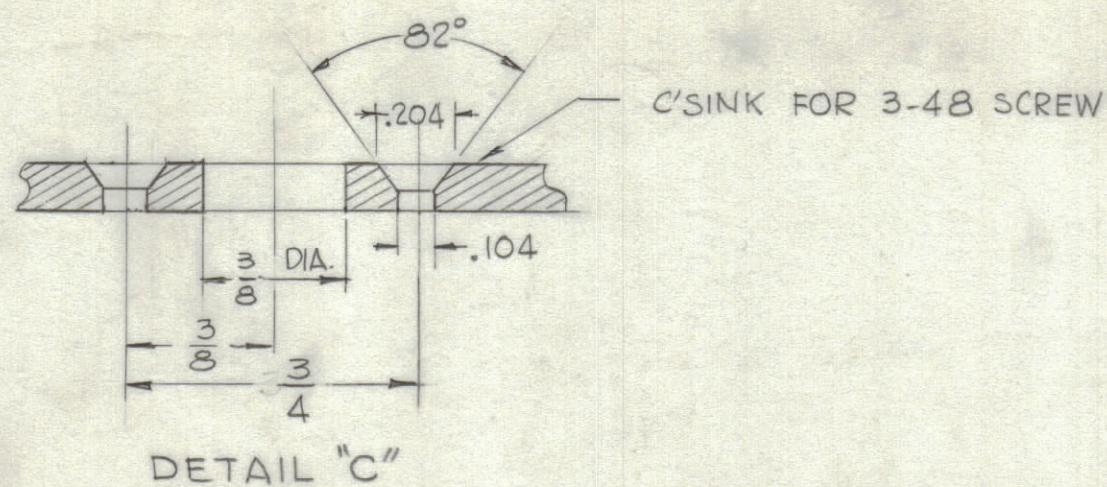
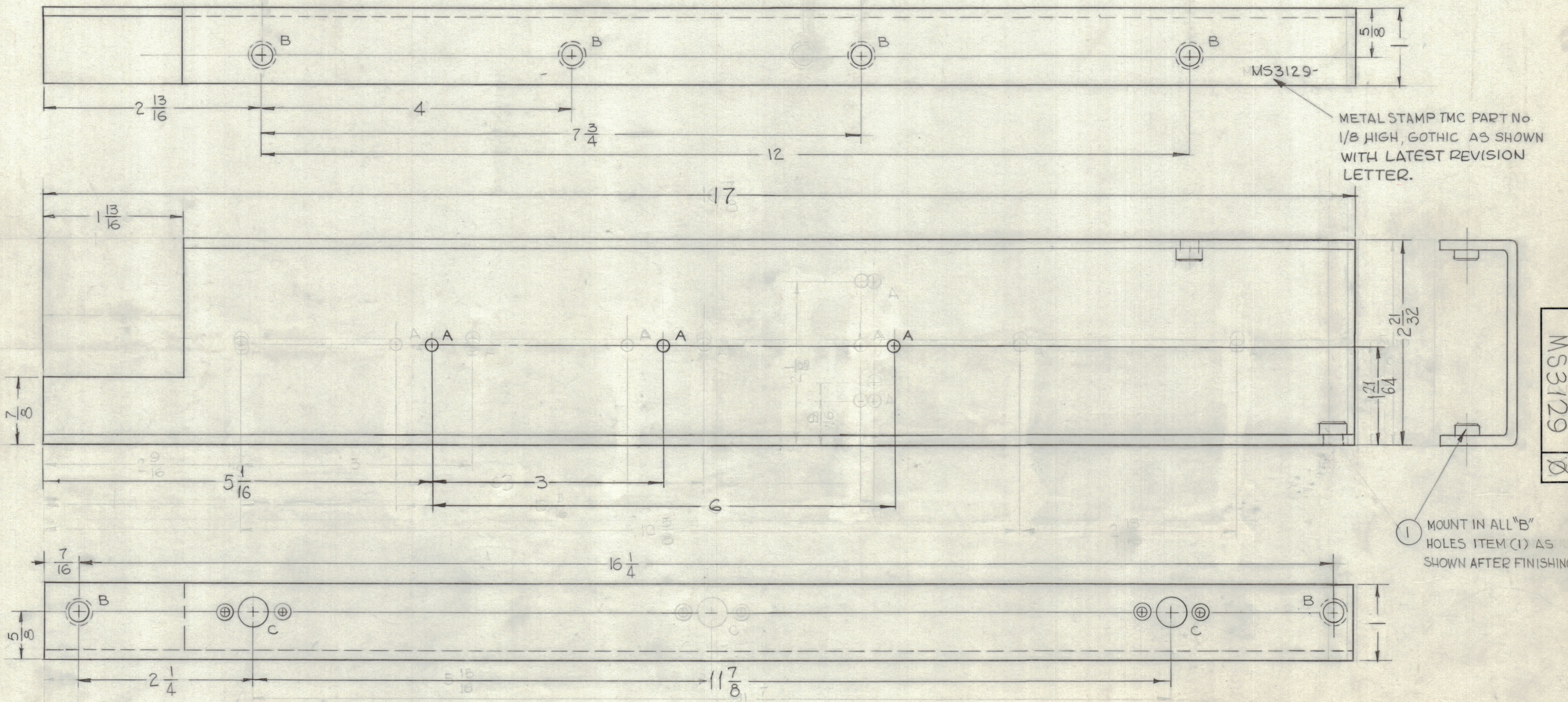


HOLE	DESCRIPTION	REQ'D
A	11/64 DIA.	3
B	.250 - .253 DIA.	6
C	SEE DETAIL "C"	2



REVISIONS							
ZONE	SYM	DESCRIPTION	DATE	E.M.N. NO.	DRAFT	CHKD	APPD
	X1	5-1/16 WAS 4-9/16	11-11-65	X1			
	Ø	ORIGINAL RELEASE FOR PRODUCTION	11/16/65				



- UNLESS OTHERWISE SPECIFIED -
 ALL ANGULAR BENDS 90°
 USE MATERIAL THICKNESS FOR MAX. RADIUS
 ON ALL BENDS.
 MOUNT INSERTS AFTER FINISHING.

NOTES

GPT - 10KLF		
Q'TY./UNIT	MODEL USED ON	ASS'Y. NO.
1	A	

REQ'D.	ITEM	PART NUMBER	DESCRIPTION	SYMBOL
6	1	NT129-1032-6	NUT, ROUND, SWAGE TYPE	B

LIST OF MATERIAL

MATERIAL	1/8 THK. ALUMINUM 5052-H32	THE TECHNICAL MATERIEL CORP. MAMARONECK, NEW YORK	
FINISH	S404 YEL. IRIDITE	TITLE DIVIDER, CHASSIS, LEFT SIDE IPA DRIVER DRAWER	

UNLESS OTHERWISE SPECIFIED DIMENSIONS ARE IN INCHES AND INCLUDE CHEMICALLY APPLIED OR PLATED FINISHES	DRAWN GDL	DATE 3/30/63	FINAL APPROVAL <i>[Signature]</i>	DATE 11/16/65
DECIMALS .X ± .05 .XX ± .01 .XXX ± .005	TOLERANCES	FRACTIONS ± 1/64 ANGLES ± 0° 30'	ELECT. DES. JCB	DATE 6-24-65
			MECH. DES. <i>[Signature]</i>	DATE

MS3129