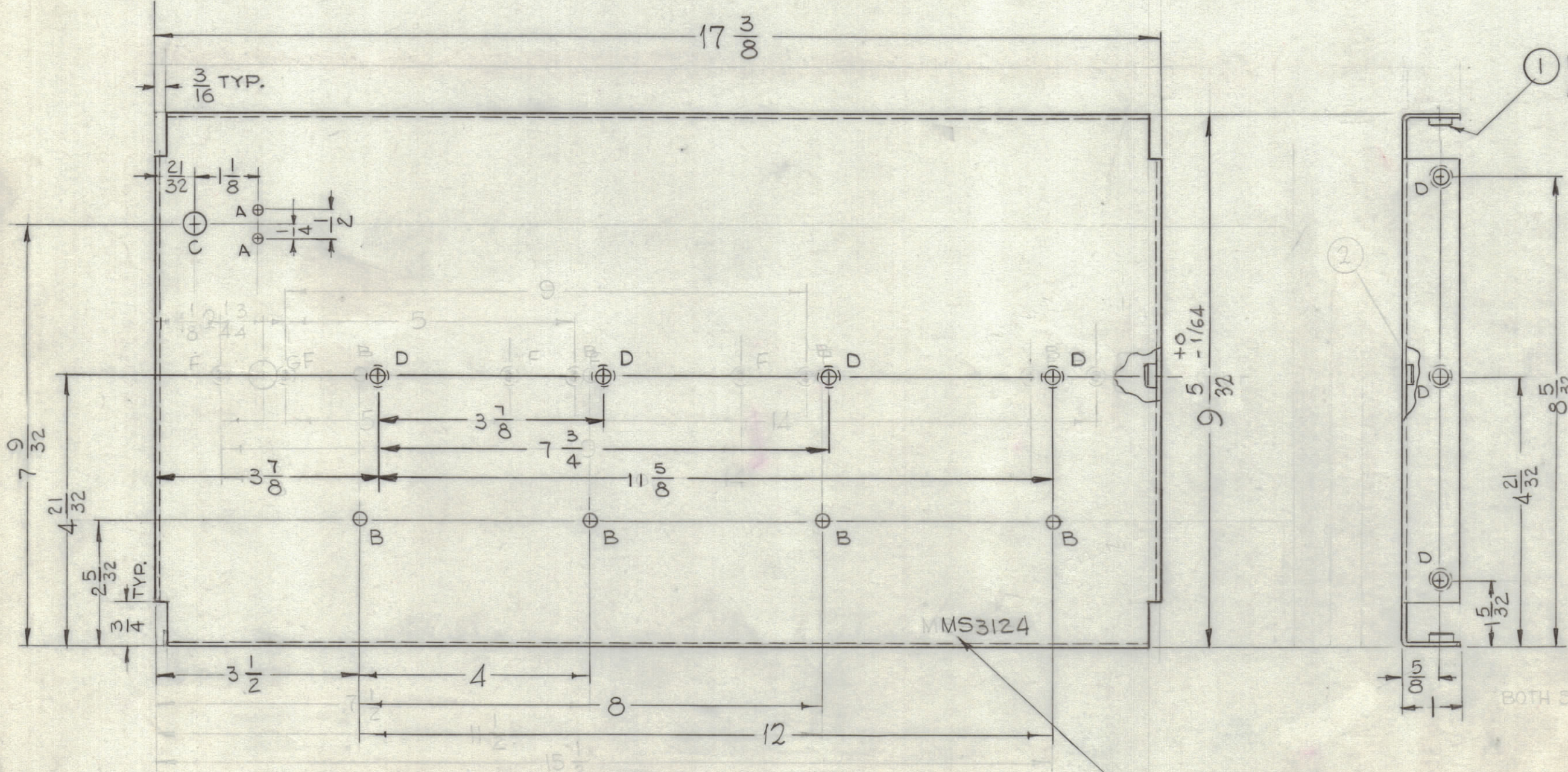
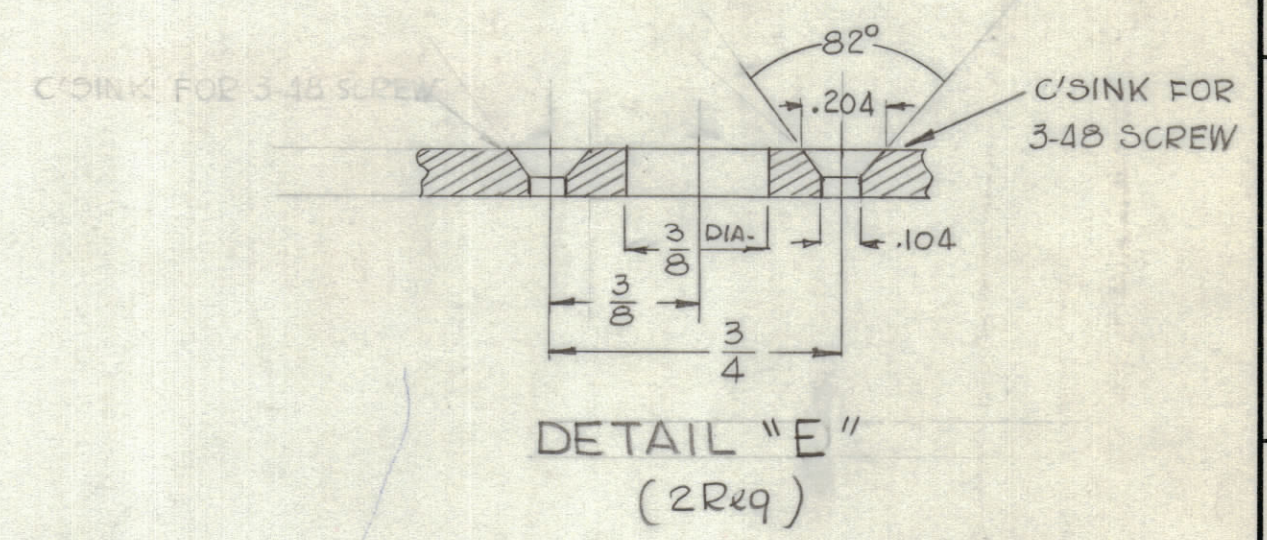
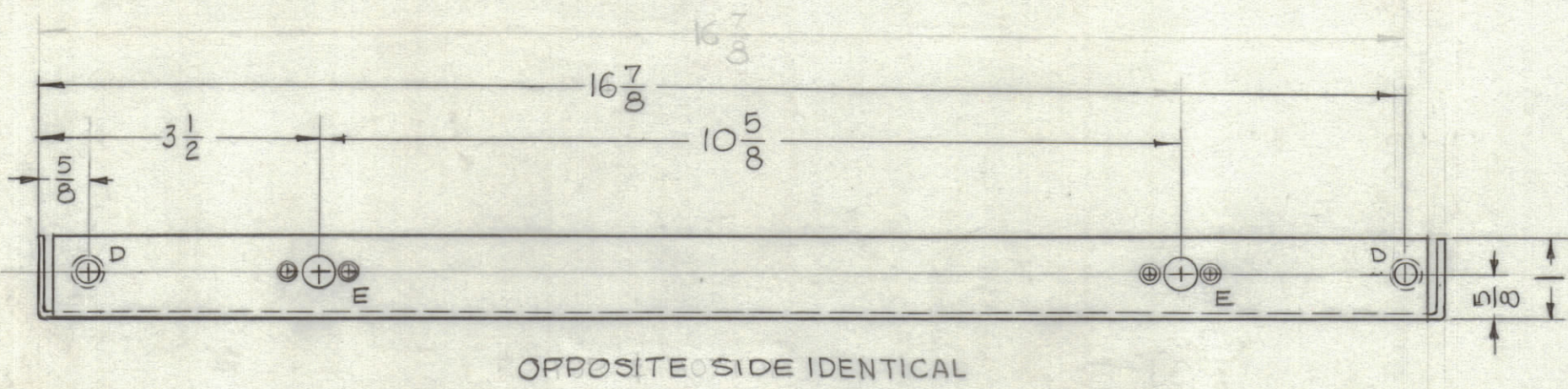


HOLE	DESCRIPTION	REQ'D
A	11/64 DIA.	2
B	15/64 DIA.	4
C	3/8 DIA.	1
D	.253-.250 DIA.	14
E	SEE DETAIL "E"	4
F	.221-.224 DIA.	4
G	1/2 DIA.	1

REVISIONS						
ZONE	SYM	DESCRIPTION	DATE	E.M.N. NO.	DRAFT	CHKD
	X	EXP. RELEASE	4/1/63		GDL	
	X1	COMPLETELY REVISED	2/3/65		JL	
	X2	14 1/8 DIM DELETED, 10 5/8 DIM ADDED	11/20/65		Jc	
	Ø	ORIGINAL RELEASE	1/27/65			Jc



① MOUNT IN ALL "D" HOLES ITEM (1) AS SHOWN AFTER FINISHING

METAL STAMP TMC PART No. 1/8 HIGH, GOTHIC AS SHOWN ON INSIDE W/LATEST REV LETTER.

- UNLESS OTHERWISE SPECIFIED - ALL ANGULAR BENDS 90° USE MATERIAL THICKNESS FOR MAX. RADIUS ON ALL BENDS UNLESS OTHERWISE SPECIFIED

QTY./UNIT	MODEL USED ON	ASS'Y. NO.
4	NT-129-832-6	
14	NT-129-1032-6	

REQ'D.	ITEM	PART NUMBER	DESCRIPTION	SYMBOL
4	2	NT-129-832-6	NUT, ROUND, SWAGE TYPE	F
14	1	NT-129-1032-6	NUT, ROUND, SWAGE TYPE	D

0. POSE LIST OF MATERIAL

MATERIAL	1/8 THK ALUMINUM 5052-H32	THE TECHNICAL MATERIEL CORP. MAMARONECK, NEW YORK	
FINISH	S404 YEL. IRIDITE	TITLE PLATE, SIDE, RIGHT IPA DRIVER DRAWER	
UNLESS OTHERWISE SPECIFIED DIMENSIONS ARE IN INCHES AND INCLUDE CHEMICALLY APPLIED OR PLATED FINISHES	DRAWN G.D.L.	DATE 4-1-63	FINAL APPROVAL [Signature]
DECIMALS .X ± .05 .XX ± .01 .XXX ± .005	TOLERANCES ± 1/64 ANGLES ± 0° 30'	CHECKED [Signature]	DATE 6-24-65
		ELECT. DES. [Signature]	DATE
		MECH. DES. [Signature]	DATE
			SHEET

NOTES

THE CONTENTS OF THIS DRAWING ARE THE EXCLUSIVE PROPERTY OF THE TECHNICAL MATERIEL CORP. ITS UNAUTHORIZED USE OR REPRODUCTION IN WHOLE OR IN PART IS STRICTLY FORBIDDEN.

MS3124 Ø