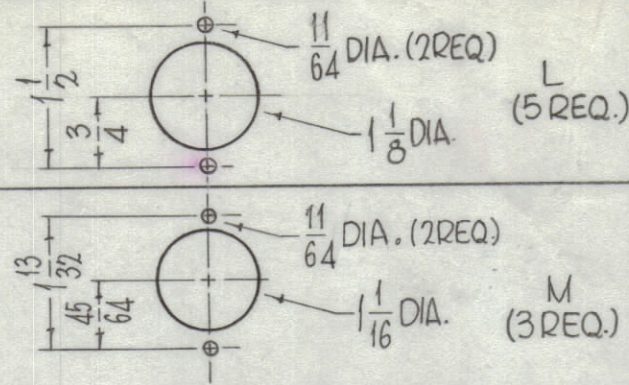
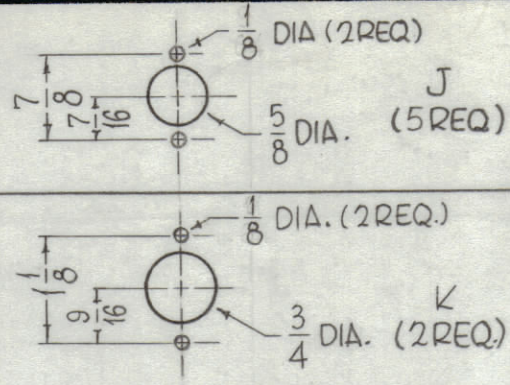
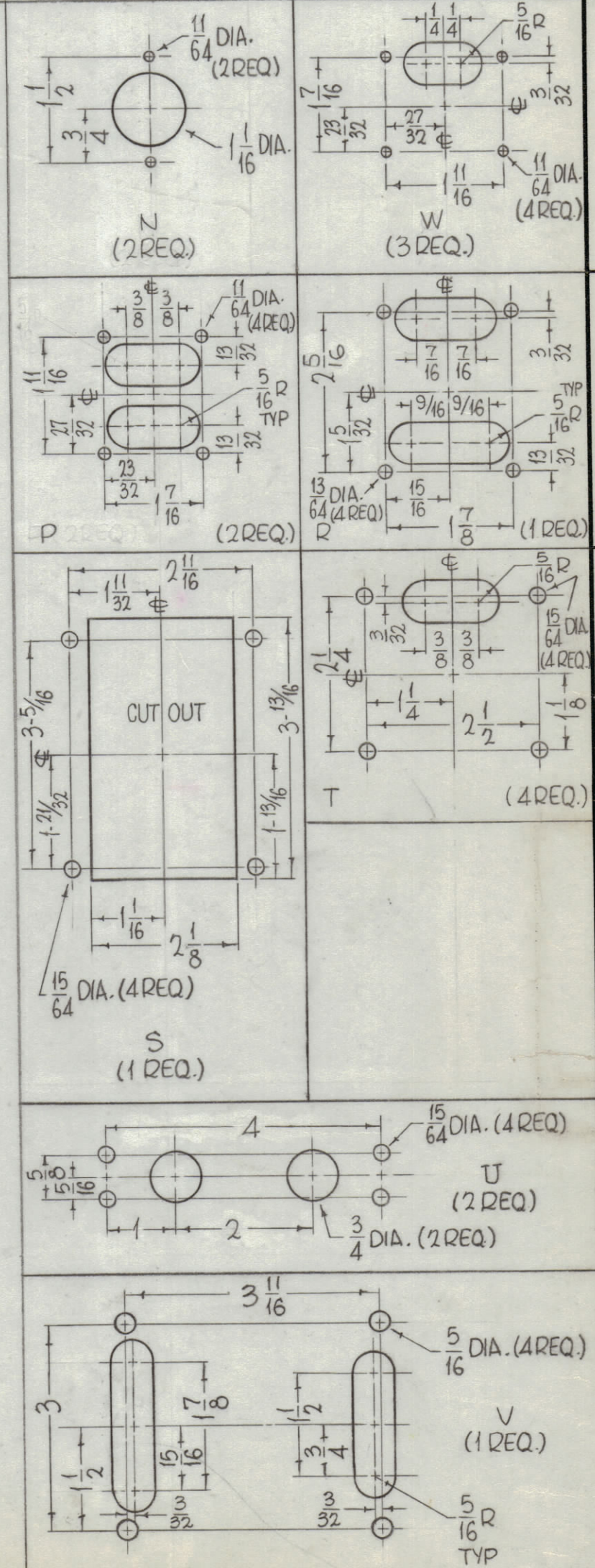
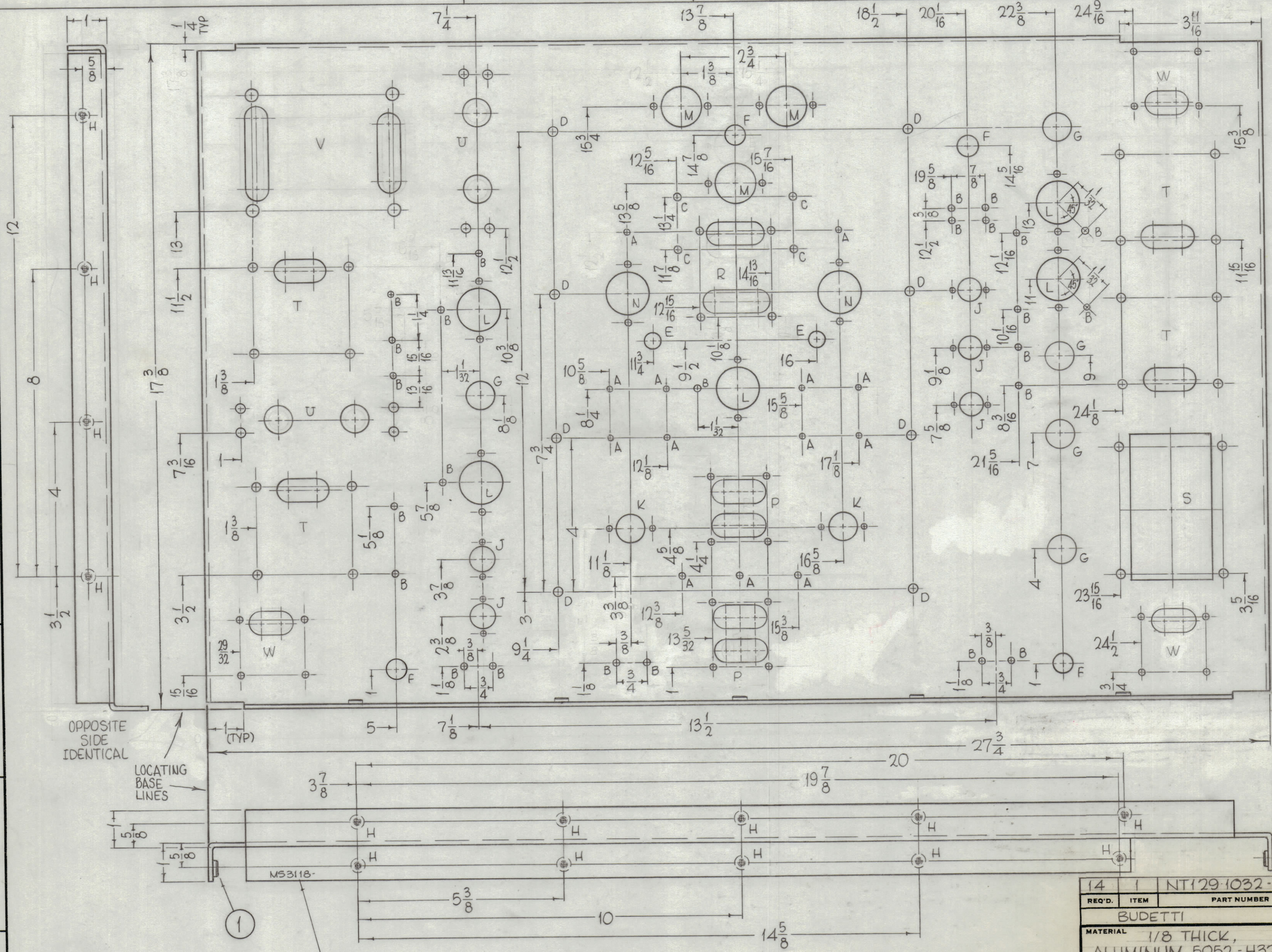


HOLES	REQ.	HOLES	REQ.
A - 9/64 DIA.	13	G - 3/4 DIA.	5
B - 11/64 DIA.	25	H - .250 .253 DIA.	14
C - 13/64 DIA.	4		
D - 15/64 DIA.	8		
E - 7/16 DIA.	2		
F - 1/2 DIA.	4		



ZONE	SYM	DESCRIPTION	DATE	E.M.N. NO.	DRAFT	CHKD	APPD
F3	X1	3/8 DIM WAS 5/16	2-1-65				
	X2	1 B HOLES ADDED, 13-5/32 WAS 13-1/8, 12-1/8 WAS 12-1/16, 10-5/16 WAS 10-9/16, 12-5/16 WAS 12-7/16, 15-7/16 WAS 15-5/16, V4 TYP WAS 3/16, 1/4 WAS 1/8	11-11-65	X2			
		ORIGINAL RELEASE FOR PRODUCTION	1/16/65				
C5	A	2" HOLES ADDED	12-7-65	15386			



REQ'D.	ITEM	PART NUMBER	DESCRIPTION	SYMBOL
14	1	NT129-1032-6	NUT, ROUND, SWAGE TYPE	

BUDETTI		LIST OF MATERIAL	
MATERIAL	1/8 THICK, ALUMINUM, 5052 - H32	THE TECHNICAL MATERIEL CORP. MAMARONECK, NEW YORK	
FINISH	S404-IRIDITE, 14-2 AL-COAT	TITLE CHASSIS, MAIN	
UNLESS OTHERWISE SPECIFIED DIMENSIONS ARE IN INCHES AND INCLUDE CHEMICALLY APPLIED OR PLATED FINISHES		DRAWN	John C Biele
		DATE	12/23/64
		CHECKED	JCB
		DATE	6-24-65
DECIMALS X ± .05 XX ± .01 .XXX ± .005	TOLERANCES	ELECT. DES.	
	FRACTIONS ± 1/64 ANGLES ± 0° 30'	MECH. DES.	
		DATE	
		DATE	
		SHEET	
		REV. LTR.	

METAL STAMP TMC PART NO. 1/8 HIGH GOTHIC WITH LATEST REVISION LETTER.

REF - TMC DWG. NO. LD1714

Q'TY./UNIT	MODEL USED ON	ASS'Y. NO.
1	VLLA-1	
SCALE	CODE	

THE CONTENTS OF THIS DRAWING ARE THE EXCLUSIVE PROPERTY OF THE TECHNICAL MATERIEL CORP. ITS UNAUTHORIZED USE OR REPRODUCTION IN WHOLE OR IN PART IS STRICTLY FORBIDDEN.

NOTES