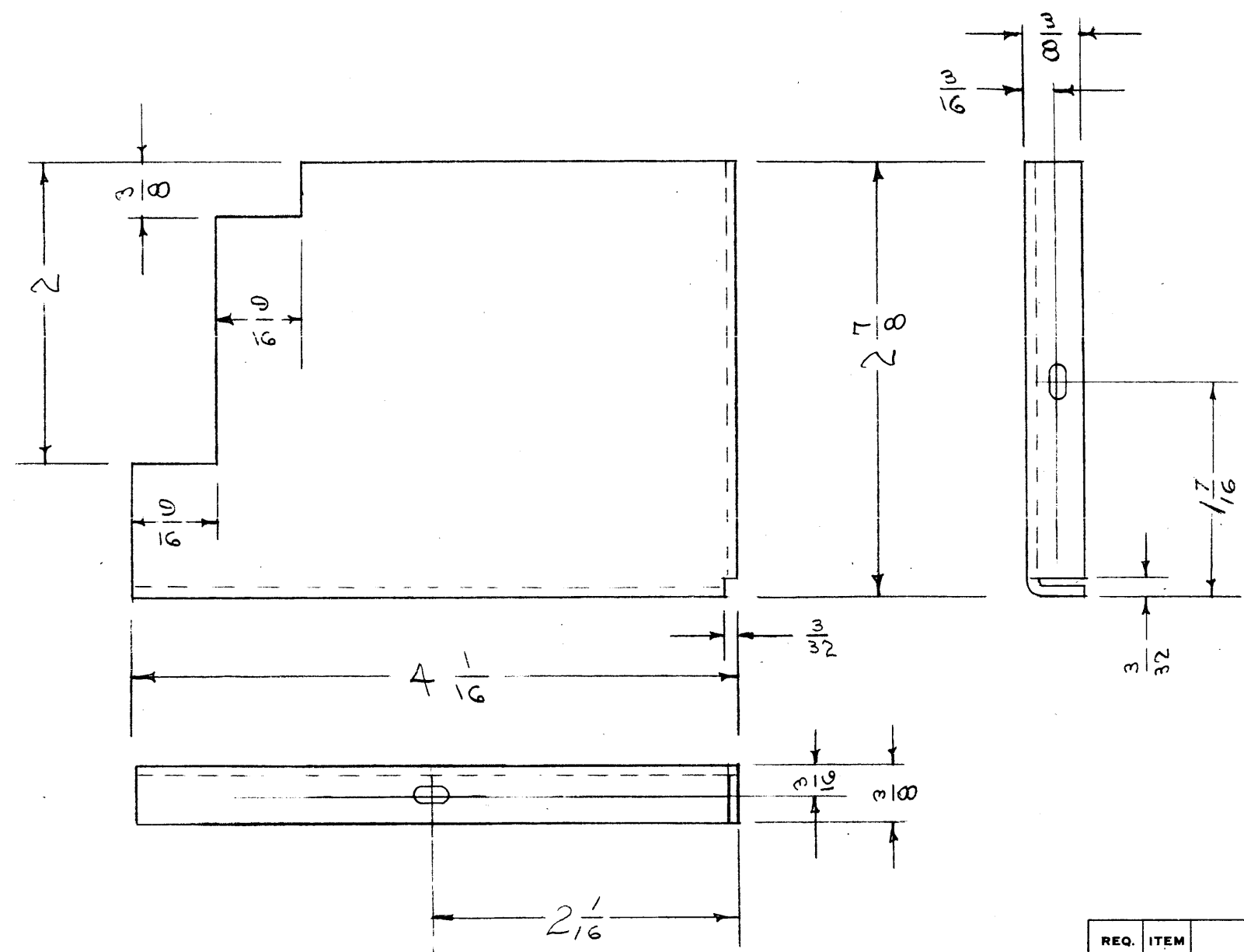


IF IT IS FOUND DESIRABLE TO CHANGE ANY TOLERANCE OR OTHER DETAIL SPECIFIED ON THIS DRAWING NOTIFY THE PURCHASER PROMPTLY.

MAXIMUM ALLOWABLE TOLERANCES HAVE BEEN DETERMINED AND DEVIATIONS WILL BE CAUSE FOR REJECTION. REMOVE ALL BURRS AND SHARP EDGES

MS-300 E

1/8 X 1/4 SLOTS 2 REQ.



NOTE TO PERSONS RECEIVING THIS DRAWING

THE TECHNICAL MATERIEL CORPORATION claims proprietary right in the material disclosed hereon. This drawing is issued in confidence for engineering information only and may not be reproduced or used to manufacture anything shown hereon without permission from THE TECHNICAL MATERIEL CORPORATION to the user. This drawing is loaned for mutual assistance and is subject to recall at any time.

Property of:
THE TECHNICAL MATERIEL CORPORATION
 MAMARONECK, NEW YORK

ISSUE	ITEM	CHANGED FROM	DATE	CN. NO.	DRAFTS	CHECKER	ENG. APP.
E	1	S-404 WAS S-101	7/4/59	1001	MB		EMN
D	1	HOLES WERE 5/32 D. 5 PER UNIT 4-4-55		2	PB.	JAD	WDC
C	1	COMPLETE REVISION	1/18/55	1	EGD	JAD	WDC

TOLERANCES		SCALE:
ALL OTHERS	DEC. DIM. ± FRAC. DIM. ± 1/64 ANGULAR DIM. ±	DRILL, PUNCH, COMMERCIAL STOCK SIZES AND MANUFACTURERS TOLERANCES ARE NOT INCLUDED.

REQ. PER UNIT	MODEL	PROJECT NO.	ASS'Y. NO.	DATE
1	VOX-2	291		1-18-55
1	VOX		A-629	1-18-55

REQ.	ITEM	PART NO.	DESCRIPTION	SYMBOL
		.051	THE TECHNICAL MATERIEL CORP. MAMARONECK, NEW YORK	
		STOCK SIZE		
	ALUMINUM		SHIELD COVER, P. S.	
	MATERIAL	WEIGHT PER PC.		
	528 H32			
	TYPE & TEMPER			
			DRW. 1-18-55	
			DRAWN	ELEC. DES. APP.
			JAD	WDC
			CHECKED	FINAL APPROVAL
				MS-300 E
			HEAT TREAT. SPEC.	
			S-404 YELLOW IRIDITE	
			FINISH & SPEC. NO.	

IF IT IS FOUND DESIRABLE TO CHANGE ANY TOLERANCE OR OTHER DETAIL SPECIFIED ON THIS DRAWING NOTIFY THE PURCHASER PROMPTLY.

MAXIMUM ALLOWABLE TOLERANCES HAVE BEEN DETERMINED AND DEVIATIONS WILL BE CAUSE FOR REJECTION. REMOVE ALL BURRS AND SHARP EDGES

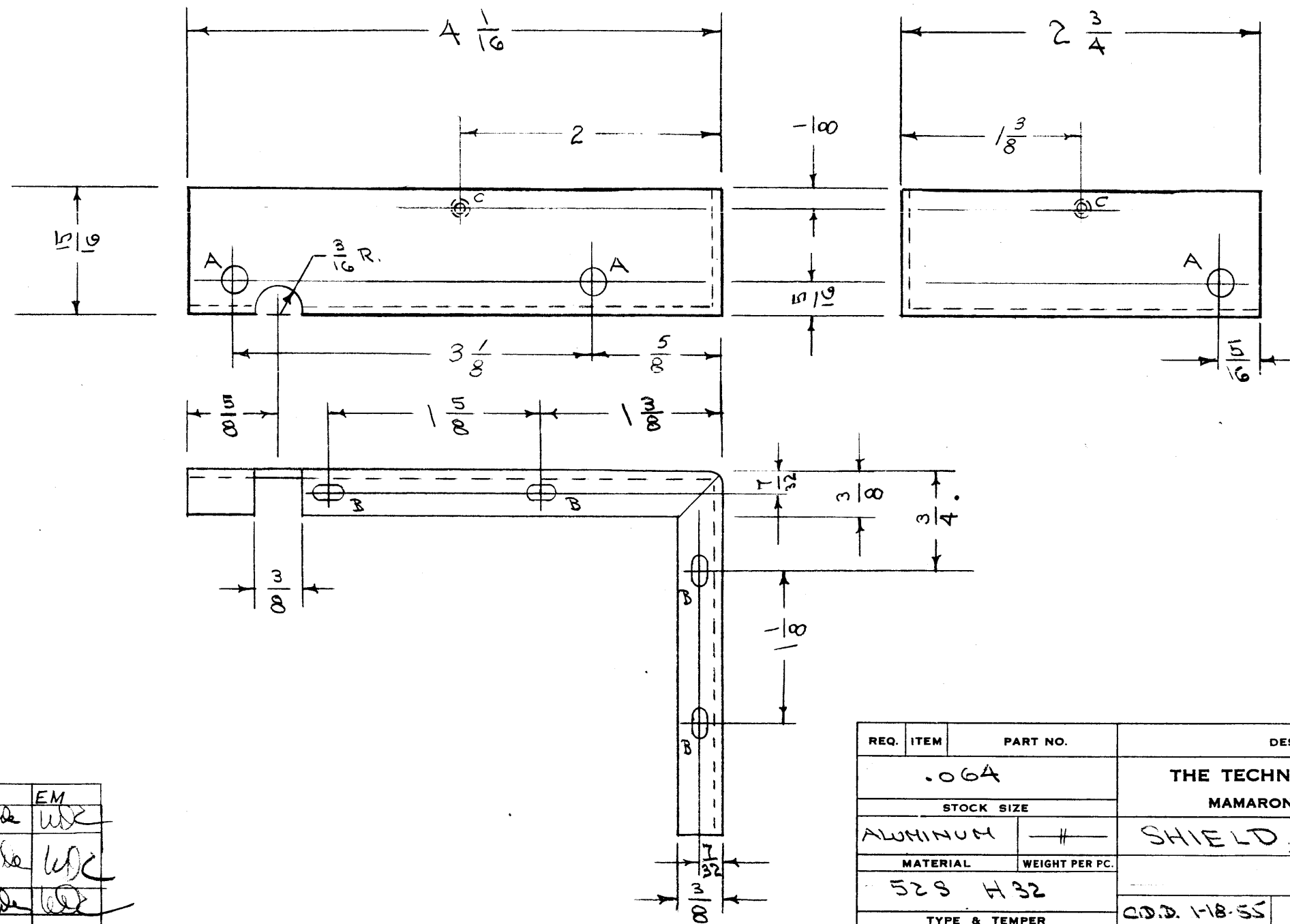
MS-301 F

A- 7/32 (.218) D. - 3 HOLES REQ.
 B- 1/8 x 1/4 SLOTS - 4 SLOTS "
 C- DRILL & TAP 4-40-2 REQ.

NOTICE CONCERNING THIS DRAWING

THE TECHNICAL MATERIEL CORPORATION claims proprietary right in the material disclosed hereon. This drawing is issued in confidence for engineering information only and may not be reproduced or used to manufacture anything shown hereon without permission from THE TECHNICAL MATERIEL CORPORATION to the user. This drawing is loaned for mutual assistance and is subject to recall at any time.

Property of:
 THE TECHNICAL MATERIEL CORPORATION
 MAMARONECK, NEW YORK



ISSUE	ITEM	CHANGED FROM	DATE	CN. NO.	DRAFTS	CHECKER	ENG. APP.
F	1	S-404 WAS S-101	11/59	1001	RP	JAD	EM
E	1	C HOLES WERE 4 REQ	4-4-55	5	OB	JAD	WDC
D	2	5/8 WAS 1					
D	1	3 1/8 WAS 2 3/4	3-10-55	4	P.A.	JAD	WDC
C	1	COMPLETE REVISION	1/8/55	3	COB	JAD	WDC

TOLERANCES		SCALE:
ALL OTHERS	DEC. DIM. ± FRAC. DIM. ± 1/64 ANGULAR DIM. ±	DRILL, PUNCH, COMMERCIAL STOCK SIZES AND MANUFACTURERS TOLERANCES ARE NOT INCLUDED.

1	VOX-2	291	1-18-55
1	VOX		3-6-52
REQ. PER UNIT	MODEL	PROJECT NO.	ASS'Y. NO.
			DATE

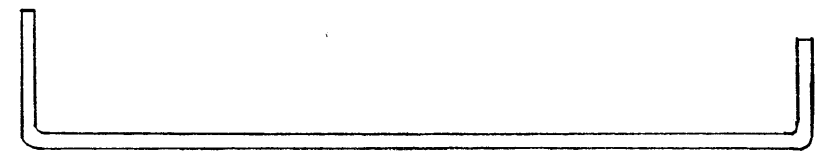
REQ. ITEM	PART NO.	DESCRIPTION	SYMBOL
	.06A	THE TECHNICAL MATERIEL CORP. MAMARONECK, NEW YORK	
	STOCK SIZE		
	ALUMINUM	SHIELD, POWER SUPPLY	
	MATERIAL		
	WEIGHT PER PC.		
	52S H32		
	TYPE & TEMPER		
	HEAT TREAT. SPEC.		
	FINISH & SPEC. NO.		

CD.D. 1-18-55		
DRAWN	ELEC. DES. APP.	MECH. DES. APP.
JAD		WDC
CHECKED	FINAL APPROVAL	
	MS-301	F

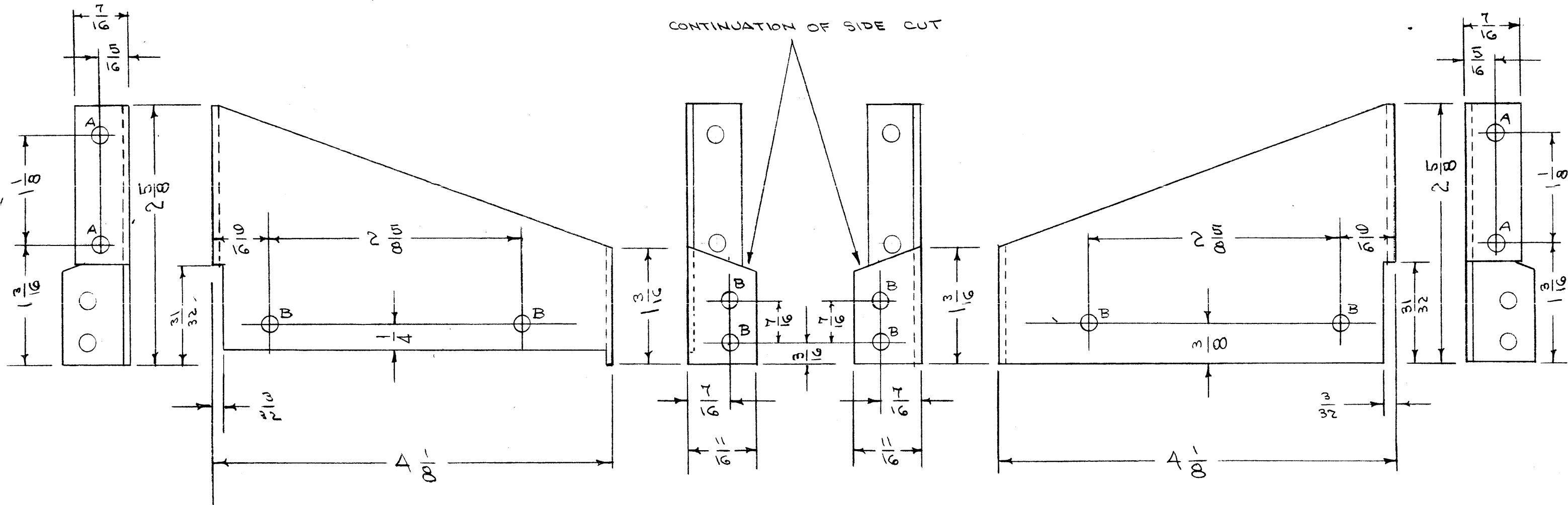
IF IT IS FOUND DESIRABLE TO CHANGE ANY TOLERANCE OR OTHER DETAIL SPECIFIED ON THIS DRAWING NOTIFY THE PURCHASER PROMPTLY.

MAXIMUM ALLOWABLE TOLERANCES HAVE BEEN DETERMINED AND DEVIATIONS WILL BE CAUSE FOR REJECTION. REMOVE ALL BURRS AND SHARP EDGES

MS-304 D



CONTINUATION OF SIDE CUT



MS-304-1 LEFT

MS-304-2 RIGHT

A - 5/32 (.156) D 4 REQ.
 B - 1/64 (.0156) D 8 "

D	1	1/4 DIM. WAS 3/8	7-28-64	11840	SRG		
C	1	S-404 WAS S-101	12/1/59	1001	AK		EMN
B	1	ALL HOLES WERE 11/64	3/6/56	2	B	JAL	
A	1	COMPLETE REVISION	1/10/55	1	CD	JAL	

ISSUE	ITEM	CHANGED FROM	DATE	CN. NO.	DRAFTS	CHECKER	ENG. APP.
TOLERANCES		SCALE:					
ALL OTHERS	DEC. DIM. ±	DRILL, PUNCH, COMMERCIAL STOCK SIZES AND MANUFACTURERS TOLERANCES ARE NOT INCLUDED.					
	FRAC. DIM. ±						
	ANGULAR DIM. ±						

REQ. PER UNIT	291	1-18-55
MODEL	291	1-18-55
PROJECT NO.		
ASSY. NO.		
DATE		

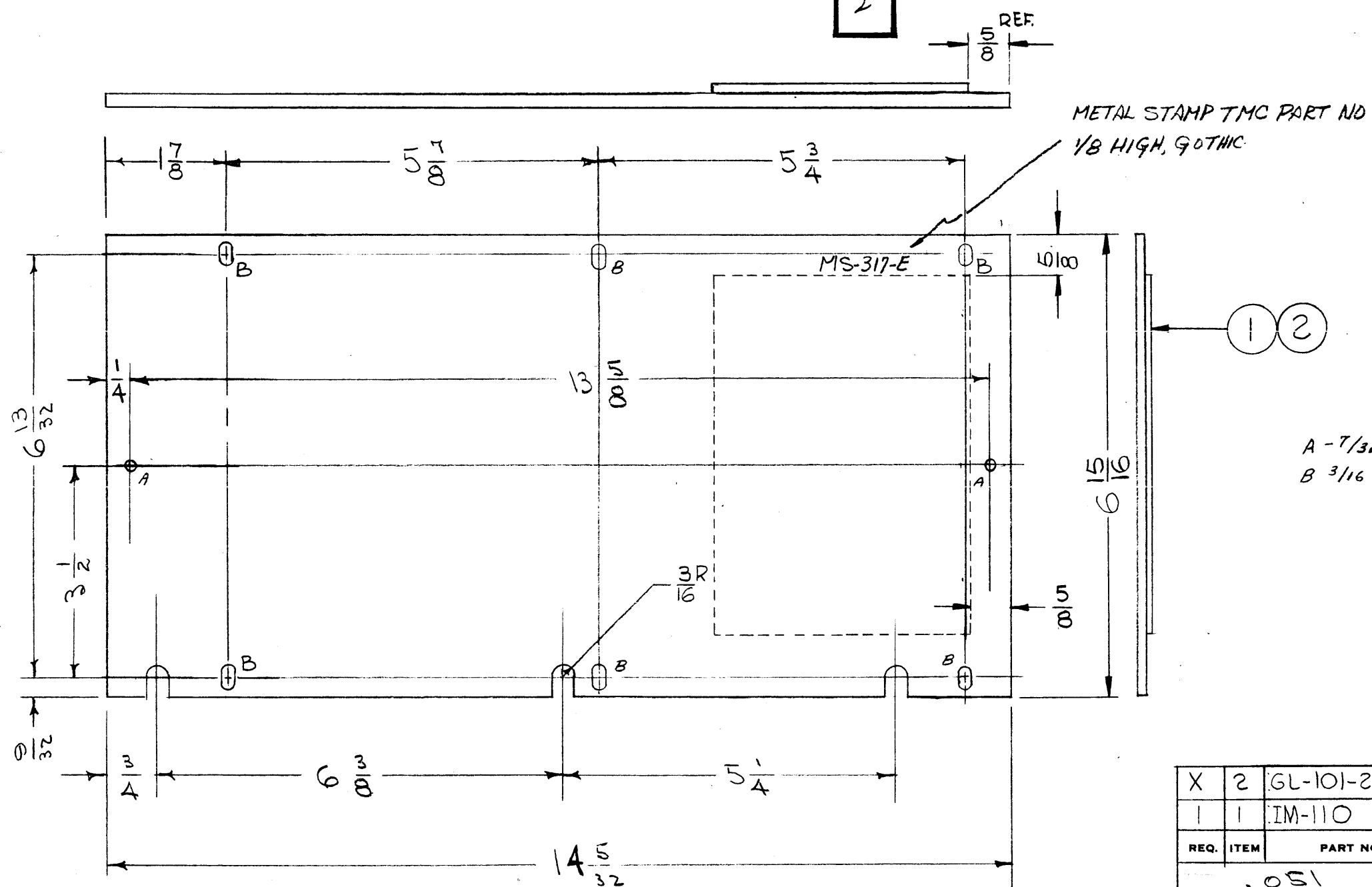
REQ. ITEM	PART NO.	DESCRIPTION	SYMBOL
	.064	THE TECHNICAL MATERIEL CORP.	
	STOCK SIZE	MAMARONECK, NEW YORK	
MATERIAL	ALUMINUM	SIDE BRACKETS	
WEIGHT PER PC.			
TYPE & TEMPER	52S H32		
HEAT TREAT. SPEC.			
FINISH & SPEC. NO.	S-404 YELLOW IRIDITE		

CD. 1-18-55		
DRAWN	ELEC. DES. APP.	MECH. DES. APP.
CHECKED	FINAL APPROVAL	
	MS-304	D

IF IT IS FOUND DESIRABLE TO CHANGE ANY TOLERANCE OR OTHER DETAIL SPECIFIED ON THIS DRAWING NOTIFY THE PURCHASER PROMPTLY.

MAXIMUM ALLOWABLE TOLERANCES HAVE BEEN DETERMINED AND DEVIATIONS WILL BE CAUSE FOR REJECTION. REMOVE ALL BURRS AND SHARP EDGES

MS-317 E



NOTE TO PERSONS RECEIVING THIS DRAWING

THE TECHNICAL MATERIEL CORPORATION claims proprietary right in the material disclosed hereon. This drawing is issued in confidence for engineering information only and may not be reproduced or used to manufacture anything shown hereon without permission from THE TECHNICAL MATERIEL CORPORATION to the user. This drawing is loaned for mutual assistance and is subject to recall at any time.

Property of:
THE TECHNICAL MATERIEL CORPORATION
MAMARONECK, NEW YORK

A - 7/32 (.218) D - 2 REQ.
B 3/16 x 1/4 SLOTS 6 REQ.

X	2	GL-101-2	CEMENT, PLIOBOND	
I	1	IM-110	INSULATOR, COVER	
REQ.	ITEM	PART NO.	DESCRIPTION	SYMBOL
			THE TECHNICAL MATERIEL CORP. MAMARONECK, NEW YORK	
		.051	BTM. COVER, R.F. CHASSIS	
		ALUMINUM		
		52S-H 32		
		TYPE & TEMPER	C.P.D. 2-2-55	
		HEAT TREAT. SPEC.		
		S-404 YELLOW IRIDITE		
		FINISH & SPEC. NO.		

E	1	DIM. 3-1/2 WAS 3-9/16	11-27-62	7703	ES	JL	GR
ISSUE	ITEM	CHANGED FROM	DATE	CN. NO.	DRAFTS	CHECKER	ENG. APP.
TOLERANCES		SCALE:					
ALL OTHERS	DEC. DIM. ± FRAC. DIM. ± ANGULAR DIM. ±	DRILL, PUNCH, COMMERCIAL STOCK SIZES AND MANUFACTURERS TOLERANCES ARE NOT INCLUDED.					

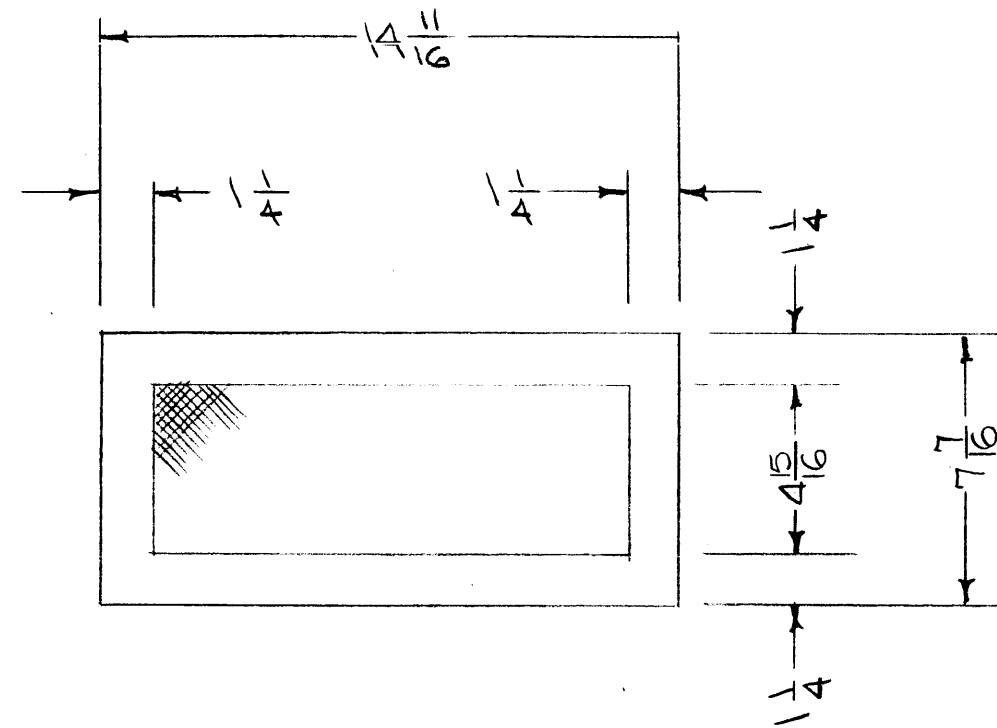
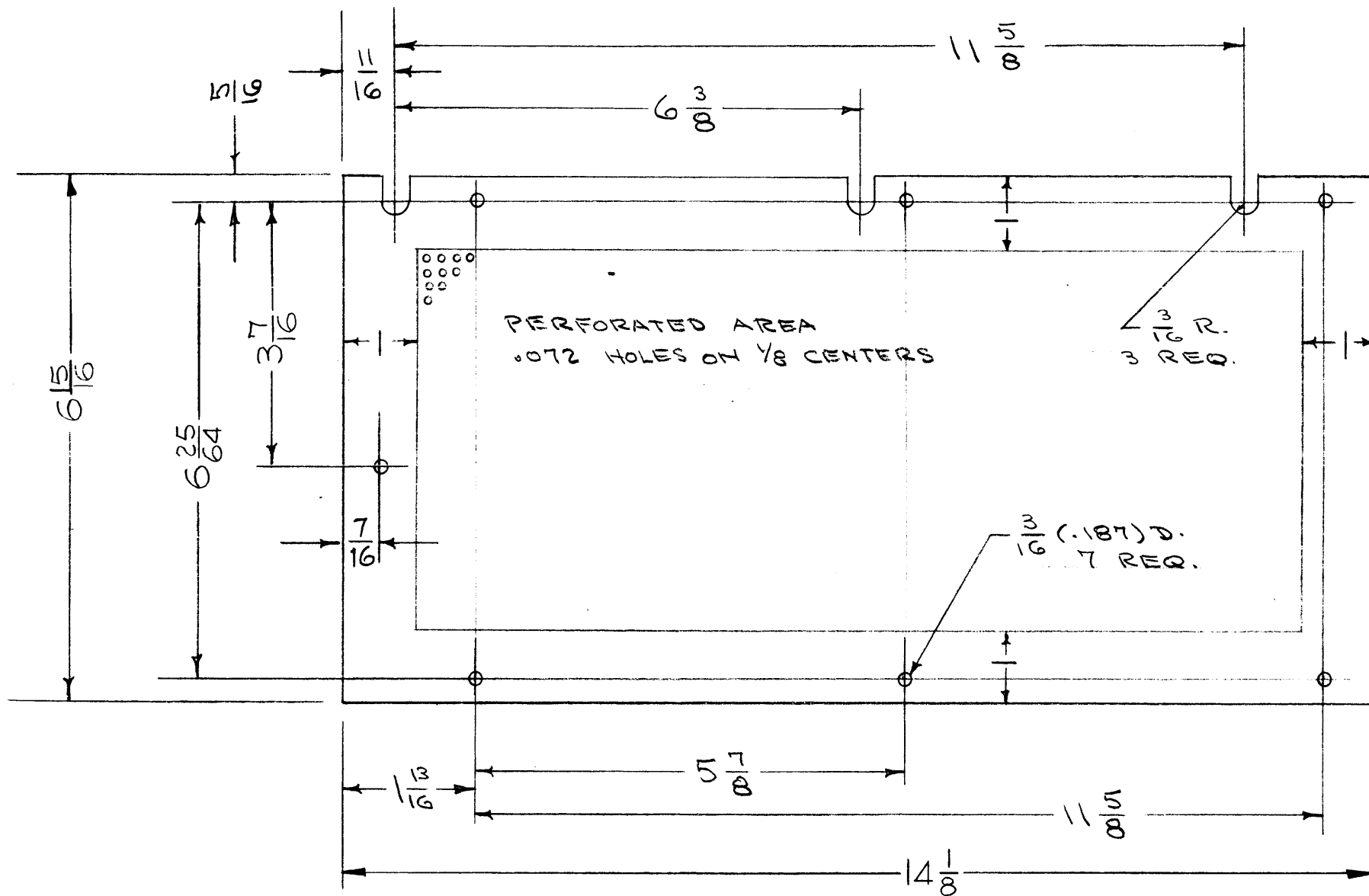
1	VOX-3,4,5,6		2-9-62
1	VOX-1		2-2-55
1	VOX		2-2-55
REQ. PER UNIT	MODEL	PROJECT NO.	ASS'Y. NO.
USED ON			

MS-317 E

IF IT IS FOUND DESIRABLE TO CHANGE ANY TOLERANCE OR OTHER DETAIL SPECIFIED ON THIS DRAWING NOTIFY THE PURCHASER PROMPTLY.

MAXIMUM ALLOWABLE TOLERANCES HAVE BEEN DETERMINED AND DEVIATIONS WILL BE CAUSE FOR REJECTION. REMOVE ALL BURRS AND SHARP EDGES

MS-320



NOTICE TO PERSONS RECEIVING THIS DRAWING

THE TECHNICAL MATERIEL CORPORATION claims proprietary right in the material disclosed herein. This drawing is issued in confidence for engineering information only and may not be reproduced or used to manufacture anything shown hereon without permission from THE TECHNICAL MATERIEL CORPORATION to the user. This drawing is loaned for mutual assistance and is subject to recall at any time.

Property of:
THE TECHNICAL MATERIEL CORPORATION
MAMARONECK, NEW YORK

E	4	7-7/16 DIM. WAS 7-5/8	2-8-62	6328	E	PK	Ker
	3	3-7/16 DIM. WAS 3-17/32					
	2	6-25/64 DIM. WAS 6-9/16					
	1	6-15/16 DIM. WAS 7-1/8; 4-15/16 DIM. ADDED					
D	2	7/16 DIM. WAS 1/2	3-1-61	4221	W.L.F.	JOS	JOS
	1	O/A DIM 1/8 WAS 15/32					
C	1	S-404 WAS S-101	12/1/59	1001	AB		EMN
B	1	HOLE IN END MOVED	1/2/55	2	EDD	J.H.D.	W.D.
ISSUE	ITEM	CHANGED FROM	DATE	CN. NO.	DRAFTS	CHECKER	ENG. APP.

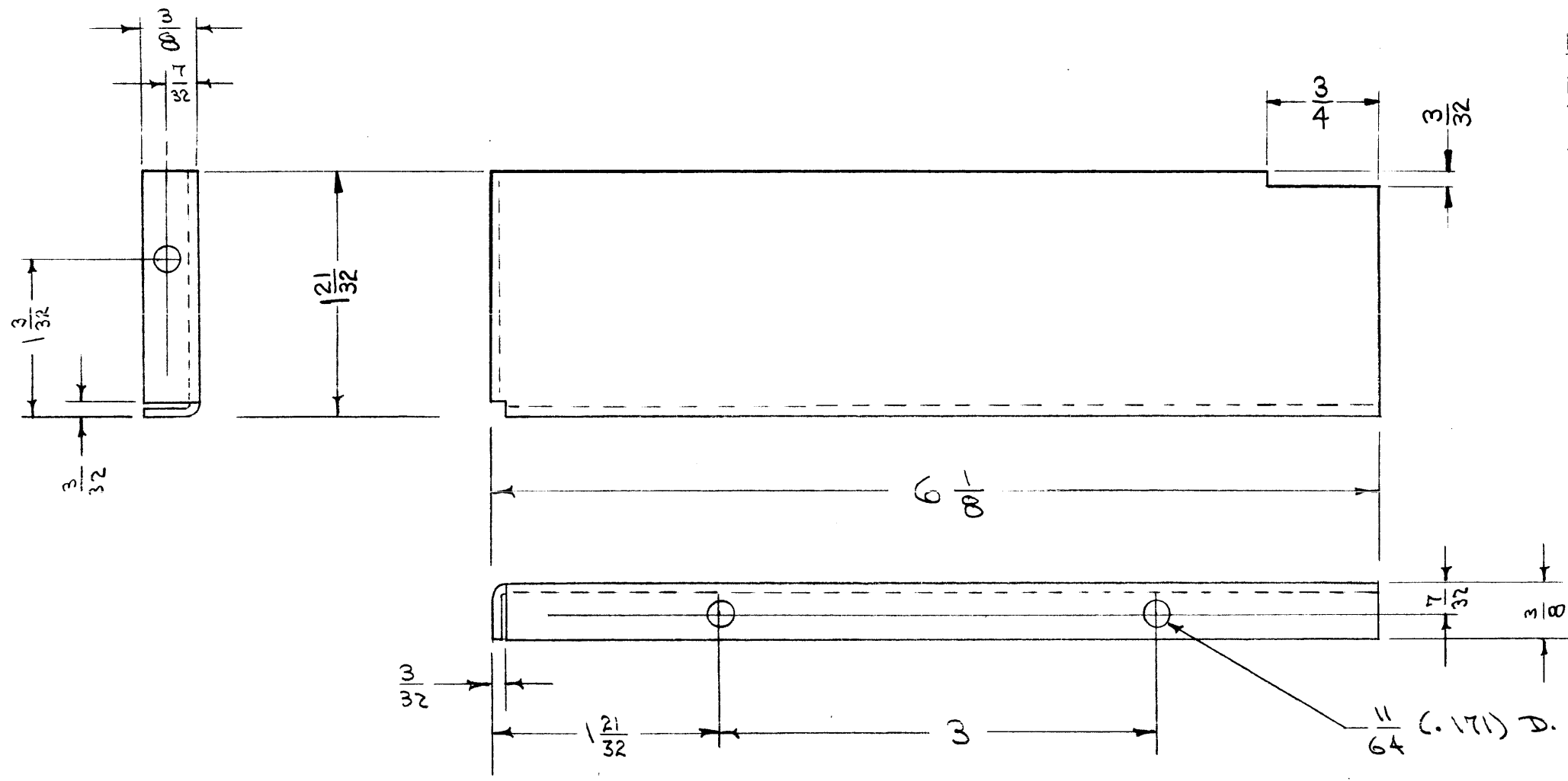
TOLERANCES		SCALE:
ALL OTHERS	DEC. DIM. ± FRAC. DIM. ± 1/64 ANGULAR DIM. ±	DRILL, PUNCH, COMMERCIAL STOCK SIZES AND MANUFACTURERS TOLERANCES ARE NOT INCLUDED.
1	10X ±	
1	10X	
REQ. PER UNIT	MODEL	PROJECT NO.
		ASS'Y. NO.
		DATE
		USED ON

REQ.	ITEM	PART NO.	DESCRIPTION	SYMBOL
		.051	THE TECHNICAL MATERIEL CORP. MAMARONECK, NEW YORK	
STOCK SIZE				
ALUMINUM		#	TOP COVER, P.S.	
MATERIAL		WEIGHT PER PC.		
PERFORATED				
52S H 32				
TYPE & TEMPER				
#				
HEAT TREAT. SPEC.				
FINISH & SPEC. NO.				
S-404 YELLOW IRIDITE				
DRAWN			ELEC. DES. APP.	MECH. DES. APP.
CHECKED			FINAL APPROVAL	
			MS-320 E.	

IF IT IS FOUND DESIRABLE TO CHANGE ANY TOLERANCE OR OTHER DETAIL SPECIFIED ON THIS DRAWING NOTIFY THE PURCHASER PROMPTLY.

MAXIMUM ALLOWABLE TOLERANCES HAVE BEEN DETERMINED AND DEVIATIONS WILL BE CAUSE FOR REJECTION. REMOVE ALL BURRS AND SHARP EDGES

MS-321 C



NOTICE TO PERSONS RECEIVING THIS DRAWING

THE TECHNICAL MATERIEL CORPORATION claims proprietary right in the material disclosed hereon. This drawing is issued in confidence for engineering information only and may not be reproduced or used to manufacture anything shown hereon without permission from THE TECHNICAL MATERIEL CORPORATION to the user. This drawing is loaned for mutual assistance and is subject to recall at any time.

Property of:
 THE TECHNICAL MATERIEL CORPORATION
 MAMARONECK, NEW YORK

C	1	1-21/32 WAS 1-7/8	7-6-62	6885	R.T.	<i>[Signature]</i>	<i>[Signature]</i>
B	1	S-404 WAS S-101	7/1/59	1001	AB		EMN
A	1	COMPLETE REVISION	7/1/59	1	ESD	<i>[Signature]</i>	<i>[Signature]</i>

ISSUE	ITEM	CHANGED FROM	DATE	CN. NO.	DRAFTS	CHECKER	ENG. APP.
TOLERANCES		SCALE:					
ALL OTHERS	DEC. DIM. ±	DRILL, PUNCH, COMMERCIAL STOCK					
	FRAC. DIM. ±	SIZES AND MANUFACTURERS					
	ANGULAR DIM. ±	TOLERANCES ARE NOT INCLUDED.					

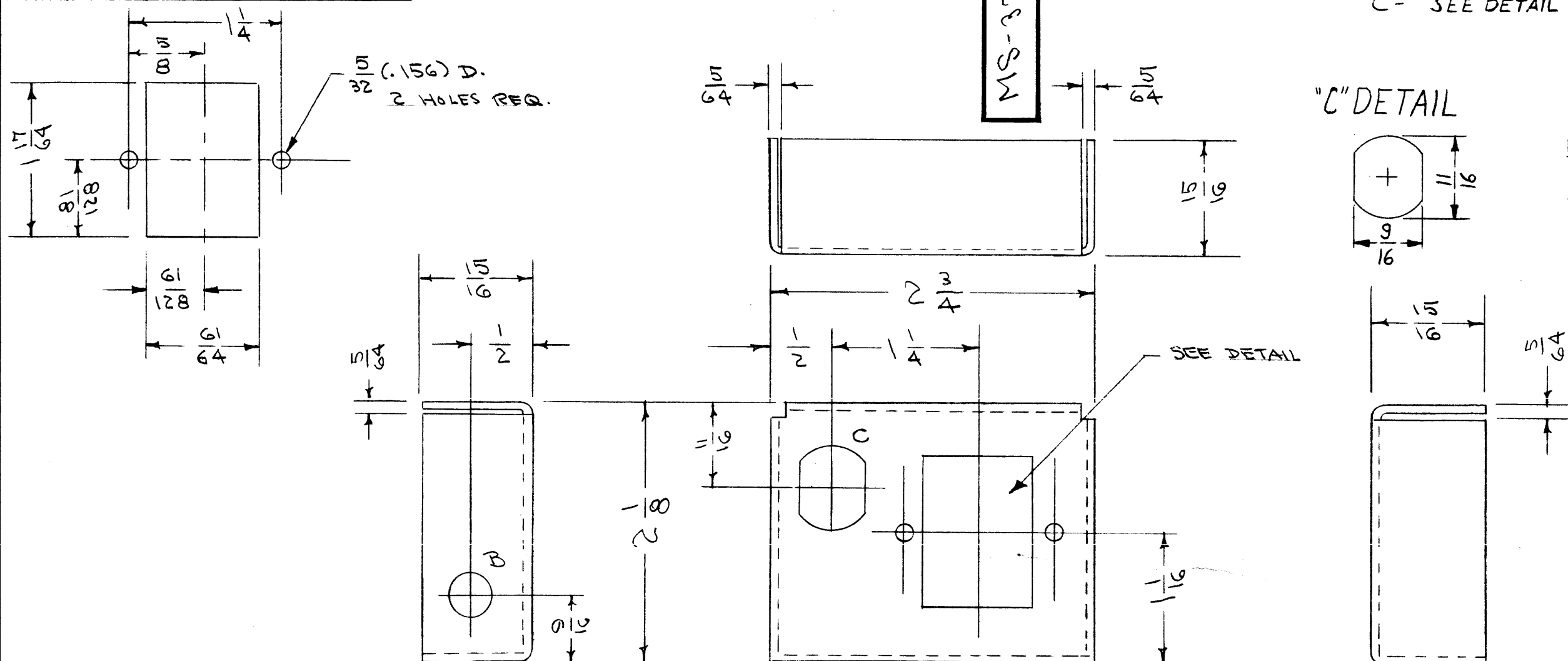
1	VOX = 1/2			1-20-55
1	VOX			1-20-55
REQ. PER UNIT	MODEL	PROJECT NO.	ASS'Y. NO.	DATE
USED ON				

REQ. ITEM	PART NO.	DESCRIPTION	SYMBOL
	.051	THE TECHNICAL MATERIEL CORP.	
	STOCK SIZE	MAMARONECK. NEW YORK	
ALUMINUM	#	COVER, IFO SHIELD	
	WEIGHT PER PC.	RF CHASSIS	
52S H32		C.D.D. 1-20-55	<i>[Signature]</i>
	TYPE & TEMPER	DRAWN	ELEC. DES. APP. MECH. DES. APP.
	#	<i>[Signature]</i>	<i>[Signature]</i>
	HEAT TREAT. SPEC.	CHECKED	FINAL APPROVAL
	S-404 YELLOW IRIDITE		
	FINISH & SPEC. NO.	MS-321	C

IF IT IS FOUND DESIRABLE TO CHANGE ANY TOLERANCE OR OTHER DETAIL SPECIFIED ON THIS DRAWING NOTIFY THE PURCHASER PROMPTLY.

MAXIMUM ALLOWABLE TOLERANCES HAVE BEEN DETERMINED AND DEVIATIONS WILL BE CAUSE FOR REJECTION. REMOVE ALL BURRS AND SHARP EDGES

A- $1/164$ (.171) D. 4 HOLES REQ.
 B- $3/8$ (.375) D. 1 " " "
 C- SEE DETAIL 1 REQ.

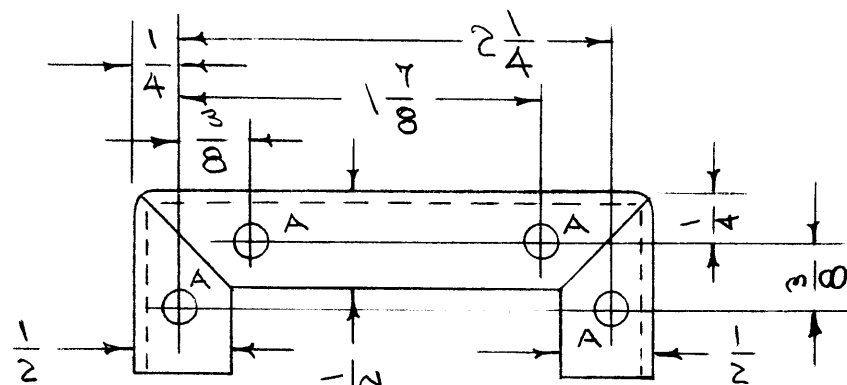


PERSONS RECEIVING THIS DRAWING

THE TECHNICAL MATERIEL CORPORATION claims proprietary right in the material disclosed hereon. This drawing is issued in confidence for engineering information only and may not be reproduced or used to manufacture anything shown hereon without permission from THE TECHNICAL MATERIEL CORPORATION to the user. This drawing is loaned for mutual assistance and is subject to recall at any time.

Property of:

THE TECHNICAL MATERIEL CORPORATION
 MAMARONECK, NEW YORK



ISSUE	ITEM	CHANGED FROM	DATE	CN. NO.	DRAFTS	CHECKER	ENG. APP.
D		"C" HOLE WAS 5/8 D.	4-5-67	18093	L.A.K.	JLB	
C	1	S-404 WAS S-101	12/11/59	1001	AB		EMN
B	1	COMPLETE REVISION	7/24/55	2	COO	JLB	

TOLERANCES	SCALE:
ALL OTHERS DEC. DIM. ± FRAC. DIM. ± ANGULAR DIM. ±	DRILL, PUNCH, COMMERCIAL STOCK SIZES AND MANUFACTURERS TOLERANCES ARE NOT INCLUDED.

1	VOX 1/2	291		1-24-55
1	VOX			1-24-55
REQ. PER UNIT	MODEL	PROJECT NO.	ASS'Y. NO.	DATE
USED ON				

REQ.	ITEM	PART NO.	DESCRIPTION	SYMBOL
	.064		THE TECHNICAL MATERIEL CORP. MAMARONECK, NEW YORK	
	ALUMINUM		BRACKET, A.C. CORD	
	MATERIAL	WEIGHT PER PC.	R.F. CHASSIS	
	52S H32			
	TYPE & TEMPER		COO 1-24-55	
			DRAWN	ELEC. DES. APP. MECH. DES. APP.
	HEAT TREAT. SPEC.		JLB 2-2-55	
			CHECKED	FINAL APPROVAL
	S-404 YELLOW IRIDITE			
	FINISH & SPEC. NO.			

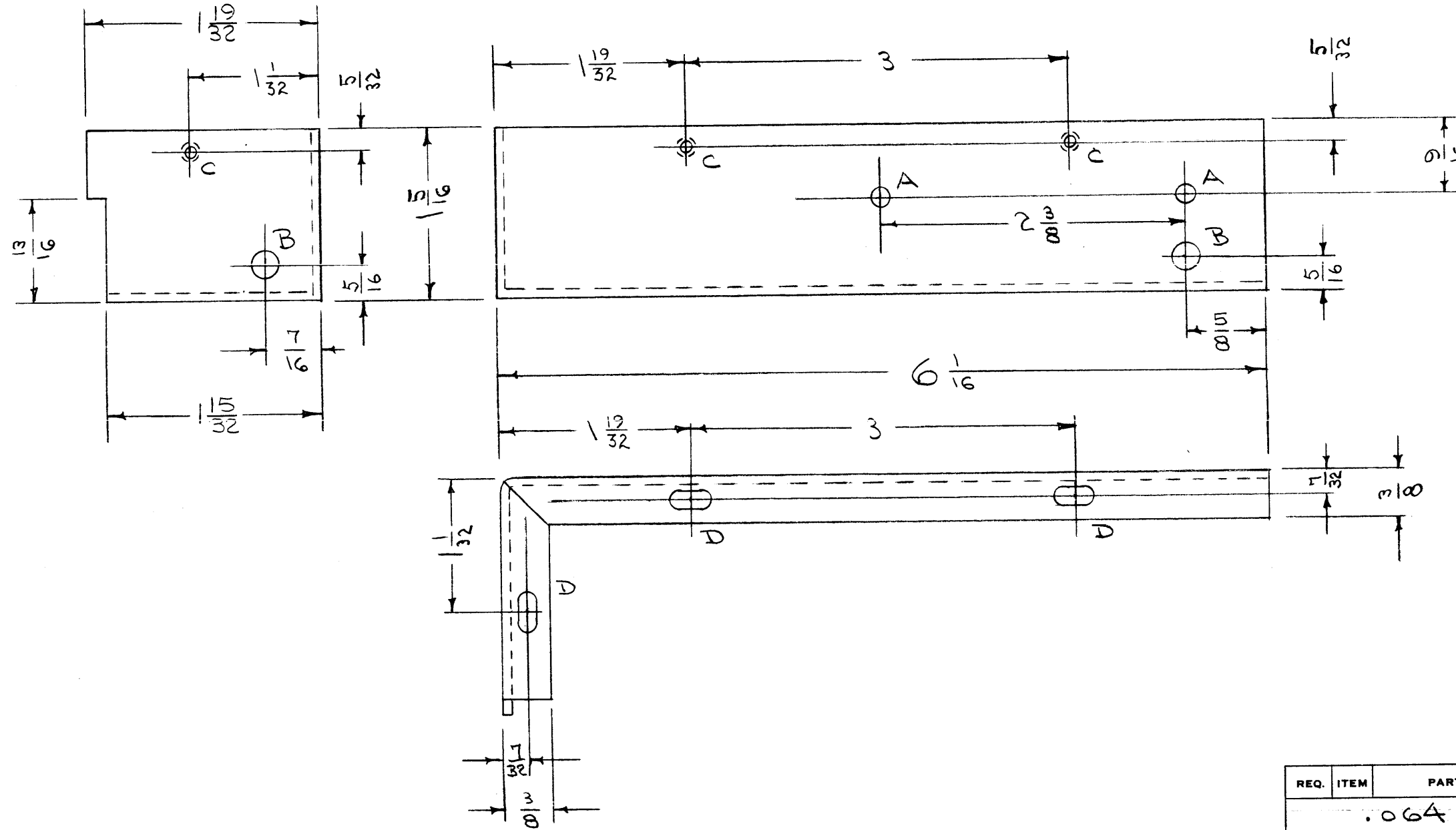
MS-322 D

IF IT IS FOUND DESIRABLE TO CHANGE ANY TOLERANCE OR OTHER DETAIL SPECIFIED ON THIS DRAWING NOTIFY THE PURCHASER PROMPTLY.

MAXIMUM ALLOWABLE TOLERANCES HAVE BEEN DETERMINED AND DEVIATIONS WILL BE CAUSE FOR REJECTION. REMOVE ALL BURRS AND SHARP EDGES

MS-32A C

A - 9/64 (.140) D. 2 HOLES REQ.
 B - 7/32 (.218) D. 2 " " "
 C - DRILL & TAP A-40 3 " " "
 D - 9/64 X 9/32 SLOT 3 SLOTS " "



PROPERTY OF THE TECHNICAL MATERIEL CORPORATION
 THE TECHNICAL MATERIEL CORPORATION claims proprietary right in the material shown hereon. This drawing is issued in confidence for engineering information only and may not be reproduced or used to manufacture anything shown hereon without permission from THE TECHNICAL MATERIEL CORPORATION to the user. This drawing is loaned for mutual assistance and is subject to recall at any time.

Property of:
 THE TECHNICAL MATERIEL CORPORATION
 MAMARONECK, NEW YORK

ISSUE	ITEM	CHANGED FROM	DATE	CN. NO.	DRAFTS	CHECKER	ENG. APP.
C	2	1-15/32 DIM. WAS 1-11/16	2-8-62	632B	EA	<i>[Signature]</i>	<i>[Signature]</i>
	1	1-19/32 DIM. WAS 1-13/16					
B	1	S-404 WAS S-101	12/11/59	1001	AB	<i>[Signature]</i>	EMN
A	1	COMPLETE REVISION	1/20/55	1	ESS	<i>[Signature]</i>	<i>[Signature]</i>

TOLERANCES	SCALE: Do Not Scale
ALL OTHERS DEC. DIM. ± FRAC. DIM. ± ANGULAR DIM. ±	DRILL, PUNCH, COMMERCIAL STOCK SIZES AND MANUFACTURERS TOLERANCES ARE NOT INCLUDED.

1	VOX			1-20-55
1	VOX = 1/2	291		1-20-55
REQ. PER UNIT	MODEL	PROJECT NO.	ASS'Y. NO.	DATE

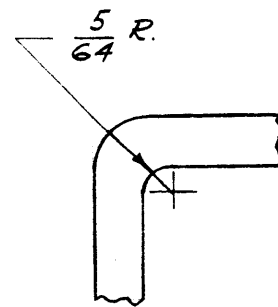
REQ.	ITEM	PART NO.	DESCRIPTION	SYMBOL
		.064	THE TECHNICAL MATERIEL CORP. MAMARONECK, NEW YORK	
		ALUMINUM	SHIELD, 1FO	
		52S H32	R.F. CHASSIS	
			C.D.D. 1-20-55	<i>[Signature]</i>
			DRAWN	ELEC. DES. APP. MECH. DES. APP.
			CHECKED	FINAL APPROVAL
		S-404 YELLOW IRIDITE		

MS-32A C

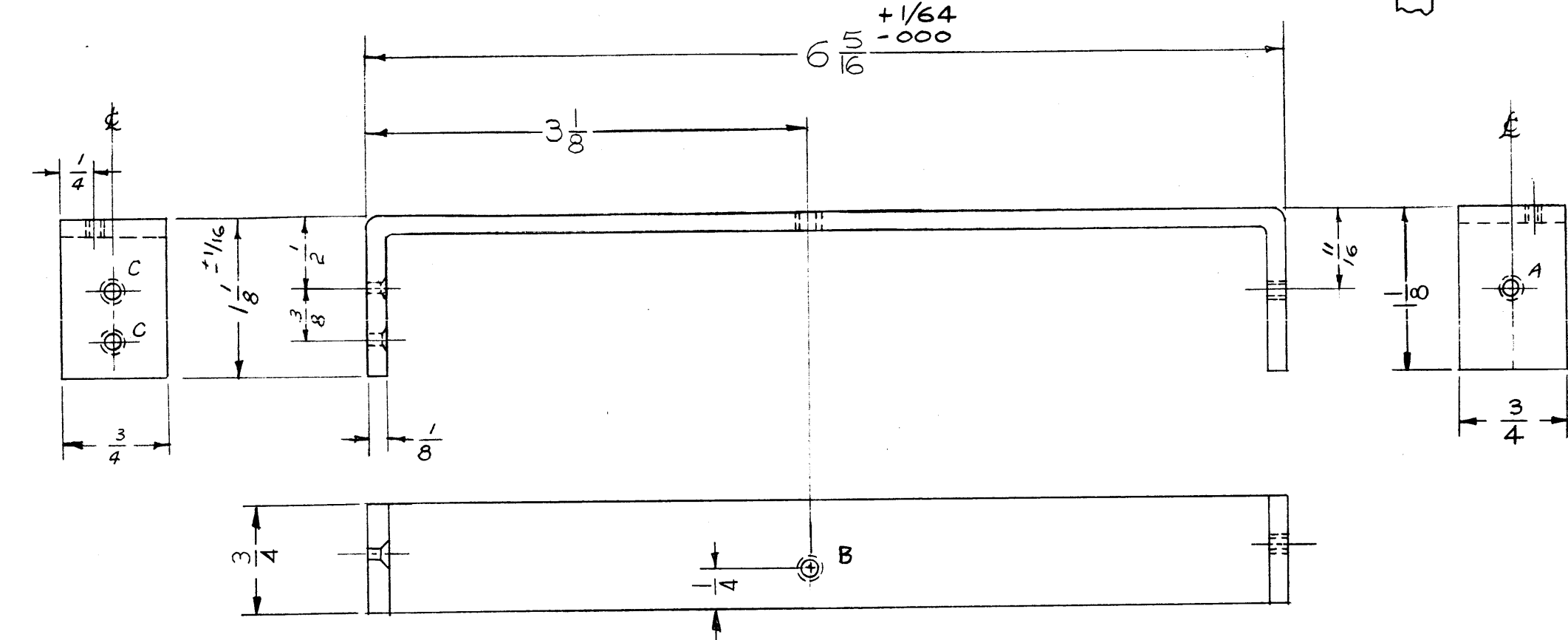
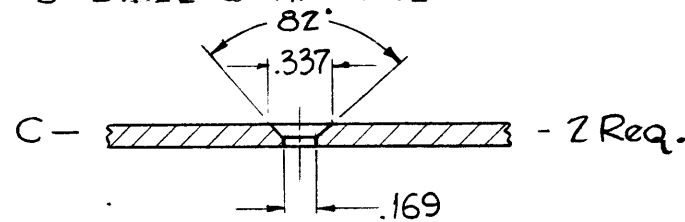
IF IT IS FOUND DESIRABLE TO CHANGE ANY TOLERANCE OR OTHER DETAIL SPECIFIED ON THIS DRAWING NOTIFY THE PURCHASER PROMPTLY.

MAXIMUM ALLOWABLE TOLERANCES HAVE BEEN DETERMINED AND DEVIATIONS WILL BE CAUSE FOR REJECTION. REMOVE ALL BURRS AND SHARP EDGES

MS-325 G



A= DRILL & TAP 8-32 1 HOLES
B= DRILL & TAP 6-32 1 HOLE



NOTICE TO PERSONS RECEIVING THIS DRAWING

THE TECHNICAL MATERIEL CORPORATION claims proprietary right in the material disclosed hereon. This drawing is issued in confidence for engineering information only and may not be reproduced or used to manufacture anything shown hereon without permission from THE TECHNICAL MATERIEL CORPORATION to the user. This drawing is loaned for mutual assistance and is subject to recall at any time.

Property of:
THE TECHNICAL MATERIEL CORPORATION
MAMARONECK, NEW YORK

G	4	3-1/8 DIM. WAS 3-7/32	2-8-62	6328			
	3	6-5/16 DIM. WAS 6-1/2 ± 1/32					
	2	1(A) HOLE DELETED, 2-1/8 DIM. DELETED					
	1	1-1/8 DIM. WAS 4 ± 1/16 (Rt. Side)					
F	1	(2) 'B' Holes changed to 'C' Holes	3-6-61	4327			
E	2	3 7/32 WAS 2 5/16	1-24-55	5			
	1	6 1/2 WAS 6 7/16	1-24-55	5			

ISSUE	ITEM	CHANGED FROM	DATE	CN. NO.	DRAFTS	CHECKER	ENG. APP.
TOLERANCES							
SCALE:							
DRILL, PUNCH, COMMERCIAL STOCK SIZES AND MANUFACTURERS TOLERANCES ARE NOT INCLUDED.							

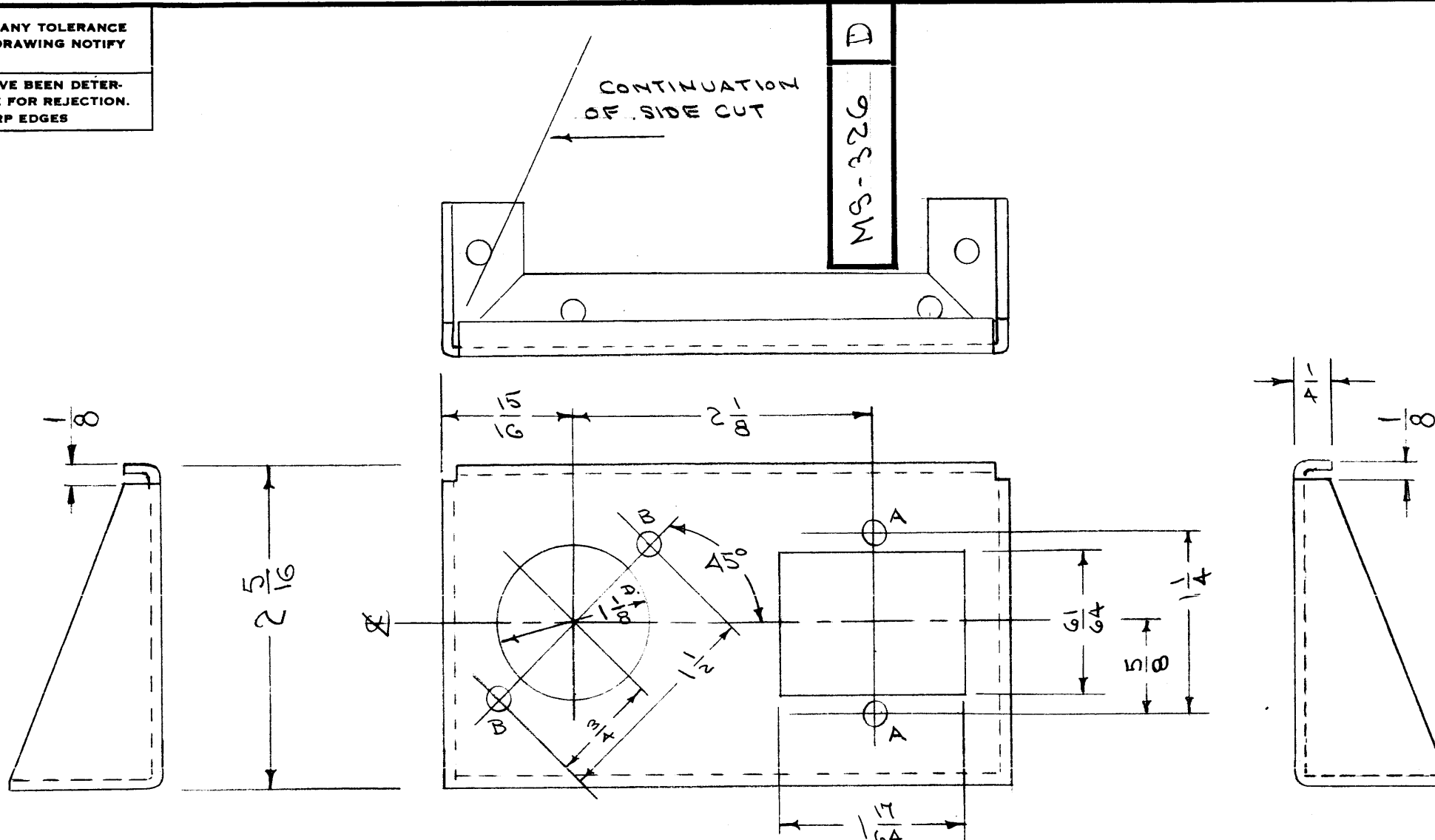
1	VOX-1-2	291	1-24-55
1	VOX	101	1-24-55
REQ. PER UNIT	MODEL	PROJECT NO.	ASS'Y. NO.
			DATE

REQ.	ITEM	PART NO.	DESCRIPTION	SYMBOL
	1/8 x 3/4 BAR		THE TECHNICAL MATERIEL CORP.	
	STEEL		MAMARONECK, NEW YORK	
	COLD ROLLED		REAR BRACE	
			PA 1-24-55	
			1-25-55	
			MS-325	

IF IT IS FOUND DESIRABLE TO CHANGE ANY TOLERANCE OR OTHER DETAIL SPECIFIED ON THIS DRAWING NOTIFY THE PURCHASER PROMPTLY.

MAXIMUM ALLOWABLE TOLERANCES HAVE BEEN DETERMINED AND DEVIATIONS WILL BE CAUSE FOR REJECTION. REMOVE ALL BURRS AND SHARP EDGES

A - 9/64 (.140) D. 2 HOLES REQ.
 B - 1/64 (.156) D. 6 " "

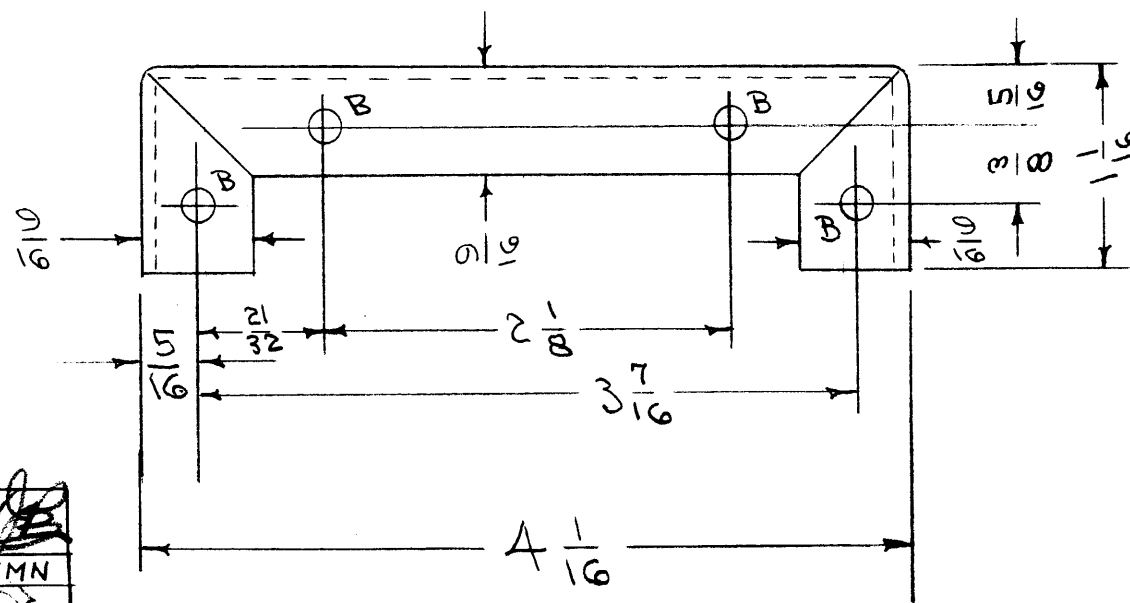


TO PERSONS RECEIVING THIS DRAWING

THE TECHNICAL MATERIEL CORPORATION claims proprietary right in the material disclosed hereon. This drawing is issued in confidence for engineering information only and may not be reproduced or used to manufacture anything shown hereon without permission from THE TECHNICAL MATERIEL CORPORATION to the user. This drawing is loaned for mutual assistance and is subject to recall at any time.

Property of:

THE TECHNICAL MATERIEL CORPORATION
 MAMARONECK, NEW YORK



D	2	ANGLE OF SIDE NOTCHES REDUCED	1/24/61	3960	DA.M	JCS	
C	1	1/8" NOTCH ADDED	12/11/59	1001	AB		EMN
B	1	COMPLETE REVISION	1/4/55	2	EDD	JAD	WDE

ISSUE	ITEM	CHANGED FROM	DATE	CN. NO.	DRAFTS	CHECKER	ENG. APP.

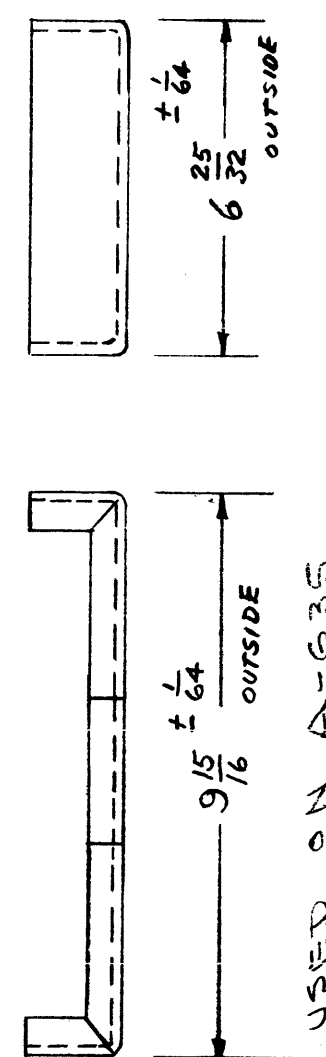
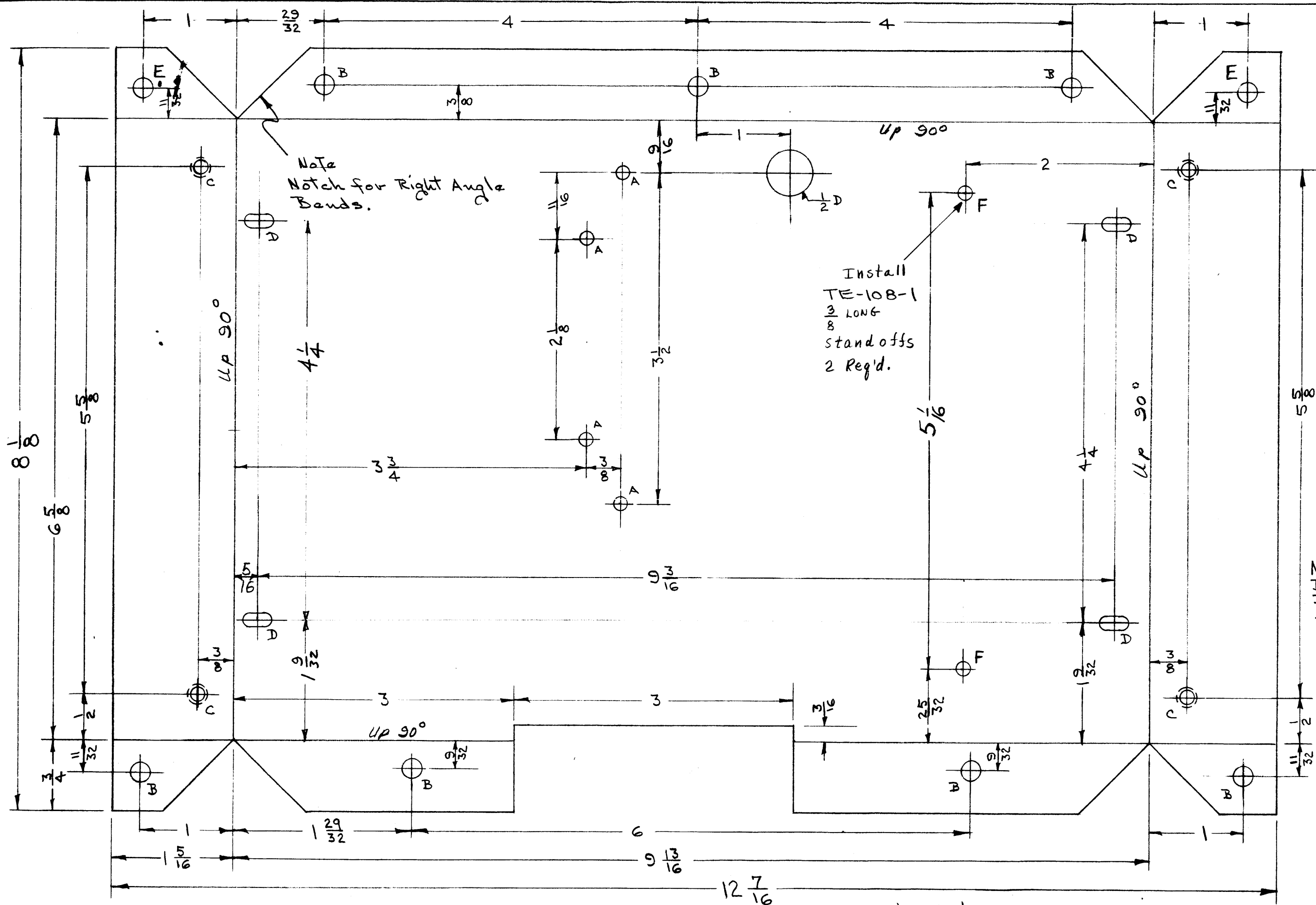
TOLERANCES	SCALE:
ALL OTHERS	DRILL, PUNCH, COMMERCIAL STOCK SIZES AND MANUFACTURERS TOLERANCES ARE NOT INCLUDED.
DEC. DIM. ±	
FRAC. DIM. ±	
ANGULAR DIM. ±	

1	VOX-3,4,5		1-24-61
1	VOX-1,2	291	1-14-55
1	VOX		3-19-52

REQ. PER UNIT	MODEL	PROJECT NO.	ASS'Y. NO.	DATE

REQ.	ITEM	PART NO.	DESCRIPTION	SYMBOL
		.051	THE TECHNICAL MATERIEL CORP.	
		STOCK SIZE	MAMARONECK, NEW YORK	
	ALUMINUM	#	RELAY BRACKET	
		MATERIAL	VOX	
		WEIGHT PER PC.		
		52S H32		
		TYPE & TEMPER	CDD. 1-14-55	
			DRAWN	ELEC. DES. APP.
			JAD 1-17-55	MECH. DES. APP.
		HEAT TREAT. SPEC.	CHECKED	FINAL APPROVAL
		S-404 YELLOW IRIDITE		
		FINISH & SPEC. NO.		

MS-326 D



NOTE:
Bend up holding Main Body for each bend.
 $\frac{1}{64}$ " inside Radius on each bend.

SUPERCEDES BMS 066-A

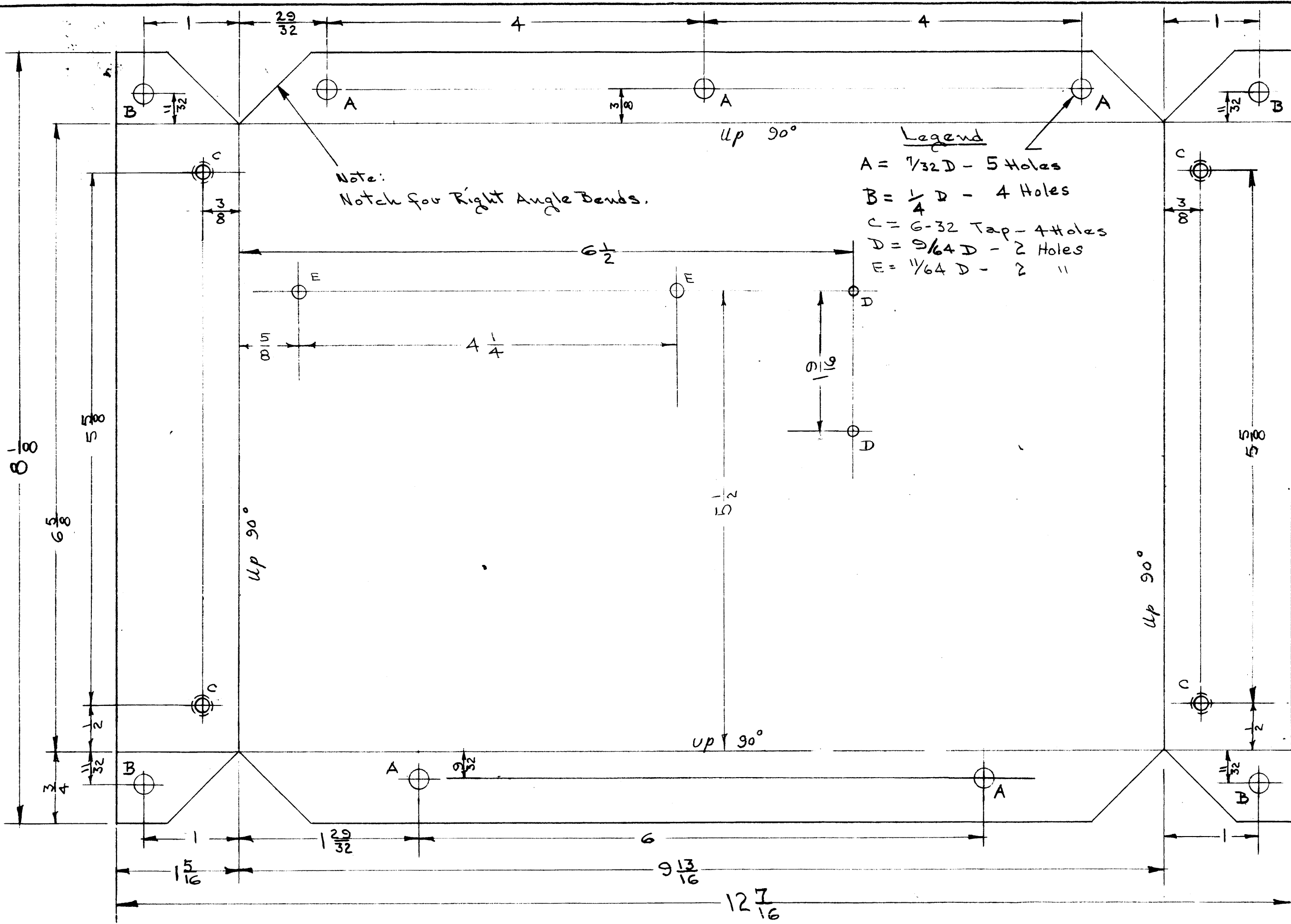
LEFT OVEN BRACKET	
Model VOX-1	
THE TECHNICAL MATERIEL CORPORATION	
MAMARONECK, NEW YORK	
DATE 3-14-52	CHKD. WJC
DRAWN J.A.D.	APPD. J.P.P.
SHEET OF	NO. MS-327 B

Material: 52S-H32 Aluminum .081 Ga.
Finish: Alkali Etch & Lacquer.
Required: One Per Unit

SYM	DESCRIPTION	DATE	APP
B	Two "A" Holes Deleted	12/30/51	WJC
A	DIM. CHANGED	2-9-52	PMB

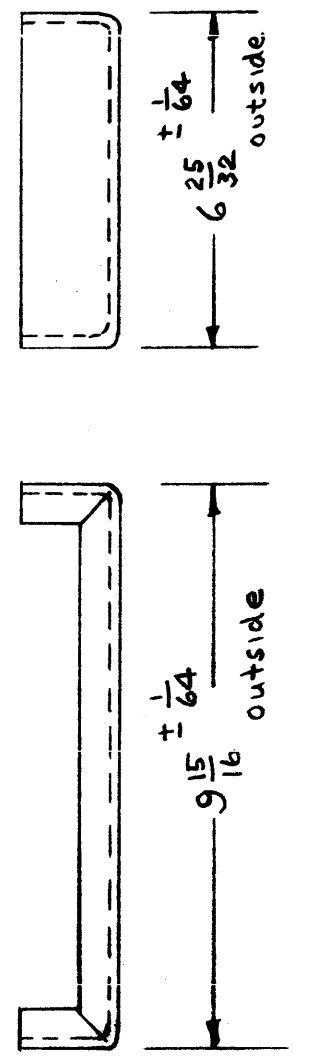
Legend
 A = $\frac{1}{64}$ - 4 holes
 B = $\frac{1}{32}$ - 7 Holes
 C = 6-32 Tap - 4 holes
 D = $\frac{1}{64} \times \frac{1}{32}$ SLOT - 4 holes
 E = $\frac{1}{4}$ - 2 Holes
 F = $\frac{3}{16}$ - 2 Holes

USED ON A-635



Legend
 A = $\frac{1}{32} D$ - 5 Holes
 B = $\frac{1}{4} D$ - 4 Holes
 C = 6-32 Tap - 4 Holes
 D = $\frac{9}{64} D$ - 2 Holes
 E = $\frac{1}{64} D$ - 2 "

Note:
 Notch for Right Angle Bends.



NOTE:
 Bend up holding Main body for each bend.
 $\frac{1}{16}$ " inside Radius on each bend.

Material: 525-H32 Aluminum .081 Ga.
 Finish : Alkali Etch & Lacquer
 Required: One Per Unit

SYM	DESCRIPTION	DATE	APP
B	E HOLES ADDED	12-29-53	WJC
A	DIM. CHANGED	9-9-52	PP

SUPERCEDES
 BMS 011-A

RIGHT OVEN BRACKET
 Model VOX-1

THE TECHNICAL MATERIEL
 CORPORATION
 MAMARONECK, NEW YORK

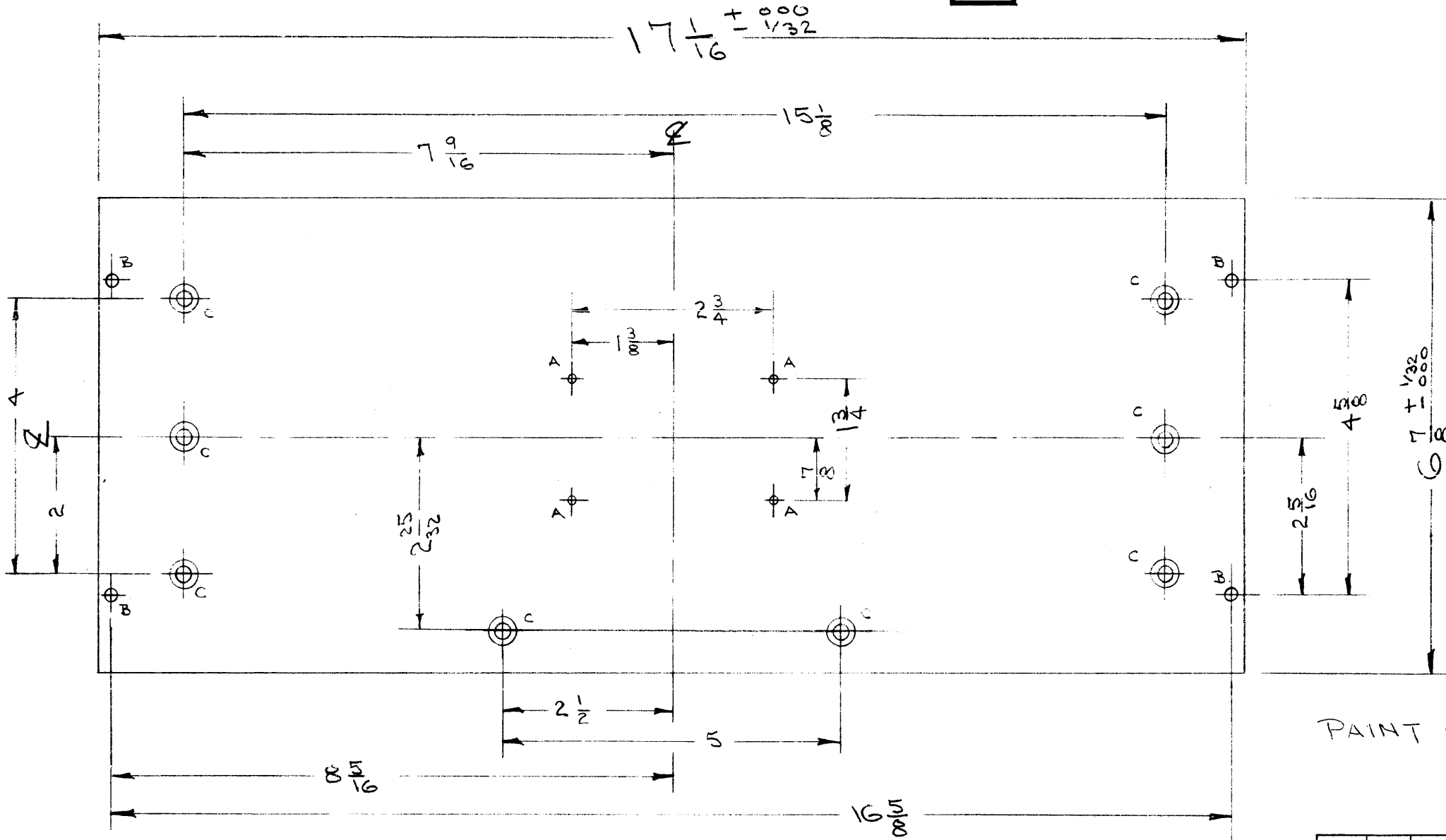
DATE 3-13-52 CHKD. WJC
 DRAWN APPD. PP
 SHEET OF NO M6-331 B

USED ON A-632 331

IF IT IS FOUND DESIRABLE TO CHANGE ANY TOLERANCE OR OTHER DETAIL SPECIFIED ON THIS DRAWING NOTIFY THE PURCHASER PROMPTLY.

MAXIMUM ALLOWABLE TOLERANCES HAVE BEEN DETERMINED AND DEVIATIONS WILL BE CAUSE FOR REJECTION. REMOVE ALL BURRS AND SHARP EDGES

MS-338 C



PROPERTY RECEIVING THIS DRAWING
 THE TECHNICAL MATERIEL CORPORATION claims proprietary right in the material disclosed hereon. This drawing is issued in confidence for engineering information only and may not be reproduced or used to manufacture anything shown hereon without permission from THE TECHNICAL MATERIEL CORPORATION to the user. This drawing is loaned for mutual assistance and is subject to recall at any time.

Property of:
 THE TECHNICAL MATERIEL CORPORATION
 MAMARONECK, NEW YORK

- A - #47 DRILL (.078) 4 REQ.
- B - 13/64 (.203) D 4 REQ.
- C - DRILL & C/SK FOR 8-32 FLAT HD. 8 REQ.

PAINT ONLY FRONT & EDGES OF PANEL
 FRONT VIEW SHOWN

S-404 YELLOW IRIDITE
 S-114 ZINC CHROMATE PRIMER
 S-115 SMOOTH GRAY ENAMEL

ISSUE	ITEM	CHANGED FROM	DATE	CN. NO.	DRAFTS	CHECKER	ENG. APP.
C	1	S-404 WAS S-101	12/11/59	1001	AB		EMN
*	*	REDRAWN - NO CHANGE	6/30/54	*	JAL		

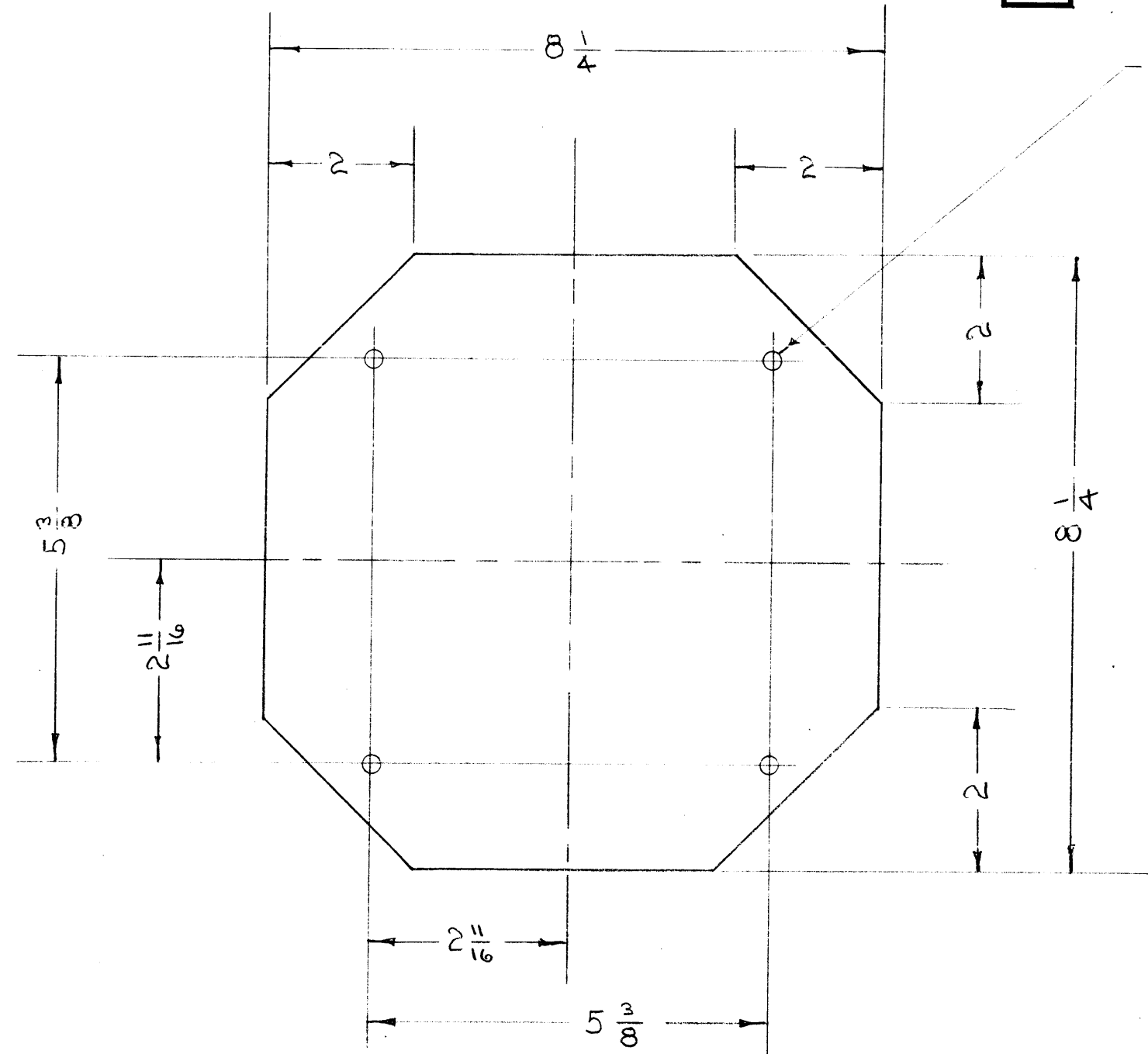
ALL OTHERS	DEC. DIM. ± FRAC. DIM. ± ANGULAR DIM. ±	SCALE: DRILL, PUNCH, COMMERCIAL STOCK SIZES AND MANUFACTURERS TOLERANCES ARE NOT INCLUDED.	DDR-2 MODEL	PROJECT NO.	ASS'Y. NO.	DATE	3-4-51
------------	---	---	----------------	-------------	------------	------	--------

REQ.	ITEM	PART NO.	DESCRIPTION		SYMBOL
	STANDARD PANEL 7"X19"		THE TECHNICAL MATERIEL CORP. MAMARONECK, NEW YORK		
	ALUMINUM REF: MS-353		FRONT PANEL - CABINET DRAWER		
	MATERIAL	WEIGHT PER PC.	DDR-2 RACK		
	TYPE & TEMPER	FAW 6-3054	DRAWN	ELEC. DES. APP.	MECH. DES. APP.
	HEAT TREAT. SPEC.		CHECKED	FINAL APPROVAL	
	SEE NOTE				
	FINISH & SPEC. NO.				MS-338 C

IF IT IS FOUND DESIRABLE TO CHANGE ANY TOLERANCE OR OTHER DETAIL SPECIFIED ON THIS DRAWING NOTIFY THE PURCHASER PROMPTLY.

MAXIMUM ALLOWABLE TOLERANCES HAVE BEEN DETERMINED AND DEVIATIONS WILL BE CAUSE FOR REJECTION. REMOVE ALL BURRS AND SHARP EDGES

MS-341



7/32 (.218) D. 4 HOLES REQ.

NOTICE TO PERSONS RECEIVING THIS DRAWING

THE TECHNICAL MATERIEL CORPORATION claims proprietary right in the material disclosed hereon. This drawing is issued in confidence for engineering information only and may not be reproduced or used to manufacture anything shown hereon without permission from THE TECHNICAL MATERIEL CORPORATION to the user. This drawing is loaned for mutual assistance and is subject to recall at any time.

Property of:

THE TECHNICAL MATERIEL CORPORATION
MAMARONECK, NEW YORK

NOTE:

MATERIAL - .051 THICK. 525-O PERFORATED ALUMINUM. .072 DIA. HOLES ON 1/8" CENTERS.

REQ.	ITEM	PART NO.	DESCRIPTION	SYMBOL
		.051	THE TECHNICAL MATERIEL CORP.	
		STOCK SIZE	MAMARONECK, NEW YORK	
	ALUMINUM	#	SCREEN, SPEAKER COVER	
	MATERIAL	WEIGHT PER PC.		
		PERFORATED		
		TYPE & TEMPER	C.D.D. 3-12-53	
			DRAWN	ELEC. DES. APP.
			5/6/53	MECH. DES. APP.
		HEAT TREAT. SPEC.	CHECKED	FINAL APPROVAL
		SEE NOTE		MS-341
		FINISH & SPEC. NO.		

ISSUE	ITEM	CHANGED FROM	DATE	CN. NO.	DRAFTS	CHECKER	ENG. APP.
TOLERANCES							
SCALE: #				LSP			
DRILL, PUNCH, COMMERCIAL STOCK SIZES AND MANUFACTURERS TOLERANCES ARE NOT INCLUDED.				PROJECT NO.			
ALL OTHERS				ASS'Y. NO.			
DEC. DIM. ±				DATE			
FRAC. DIM. ± 1/64							
ANGULAR DIM. ±							

MODEL	PROJECT NO.	ASS'Y. NO.	DATE
LSP			3-12-53

IF IT IS FOUND DESIRABLE TO CHANGE ANY TOLERANCE OR OTHER DETAIL SPECIFIED ON THIS DRAWING NOTIFY THE PURCHASER PROMPTLY.

MAXIMUM ALLOWABLE TOLERANCES HAVE BEEN DETERMINED AND DEVIATIONS WILL BE CAUSE FOR REJECTION. REMOVE ALL BURRS AND SHARP EDGES

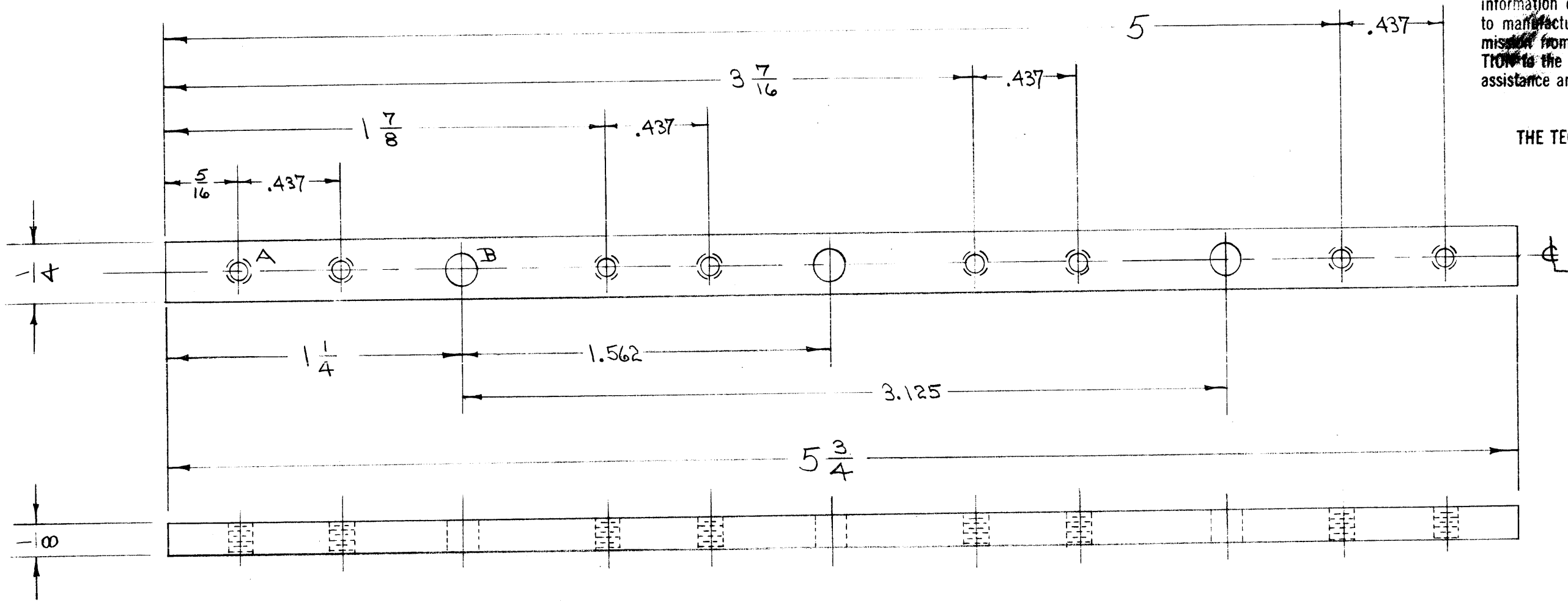
MS-342

A - DRILL AND TAP 3-48 8 HOLES REQ'D.
 B - 5/32 (.156) D. 3 HOLES REQ'D.

NOTICE TO PERSONS RECEIVING THIS DRAWING

THE TECHNICAL MATERIEL CORPORATION claims proprietary right in the material disclosed hereon. This drawing is issued in confidence for engineering information only and may not be reproduced or used to manufacture anything shown hereon without permission from THE TECHNICAL MATERIEL CORPORATION to the user. This drawing is loaned for mutual assistance and is subject to recall at any time.

Property of:
 THE TECHNICAL MATERIEL CORPORATION
 MAMARONECK, NEW YORK



ISSUE	ITEM	CHANGED FROM	DATE	CN. NO.	DRAFTS	CHECKER	ENG. APP.
TOLERANCES							
SCALE: $\frac{1}{4}$ " = 1"							
DEC. DIM. $\pm .005$ FRAC. DIM. $\pm \frac{1}{64}$ ANGULAR DIM. \pm							
DRILL, PUNCH, COMMERCIAL STOCK SIZES AND MANUFACTURERS TOLERANCES ARE NOT INCLUDED.							

FFRD-1-2-3	E-458-P		4-16-56
FFRD-8	104	A-229	3-17-53
FFRD-7	104	A-229	3-17-53
FFRD-6	104	A-229	3-17-53
FFRD-5	104	A-229	3-17-53
MODEL	PROJECT NO.	ASS'Y. NO.	DATE

REQ.	ITEM	PART NO.	DESCRIPTION	SYMBOL
		$\frac{1}{8} \times \frac{1}{4}$	THE TECHNICAL MATERIEL CORP.	
		STOCK SIZE	MAMARONECK, NEW YORK	
		BRASS	TRIMMER SUPPORT	
		MATERIAL		
		WEIGHT PER PC.		
		HALF HARD		
		TYPE & TEMPER	C.D.D. 3-17-53	
		HEAT TREAT. SPEC.	DRAWN	ELEC. DES. APP.
			MECH. DES. APP.	
			CHECKED	FINAL APPROVAL
		S-105 CADMIUM PL.		
		FINISH & SPEC. NO.		

MS-342

IF IT IS FOUND DESIRABLE TO CHANGE ANY TOLERANCE OR OTHER DETAIL SPECIFIED ON THIS DRAWING NOTIFY THE PURCHASER PROMPTLY.

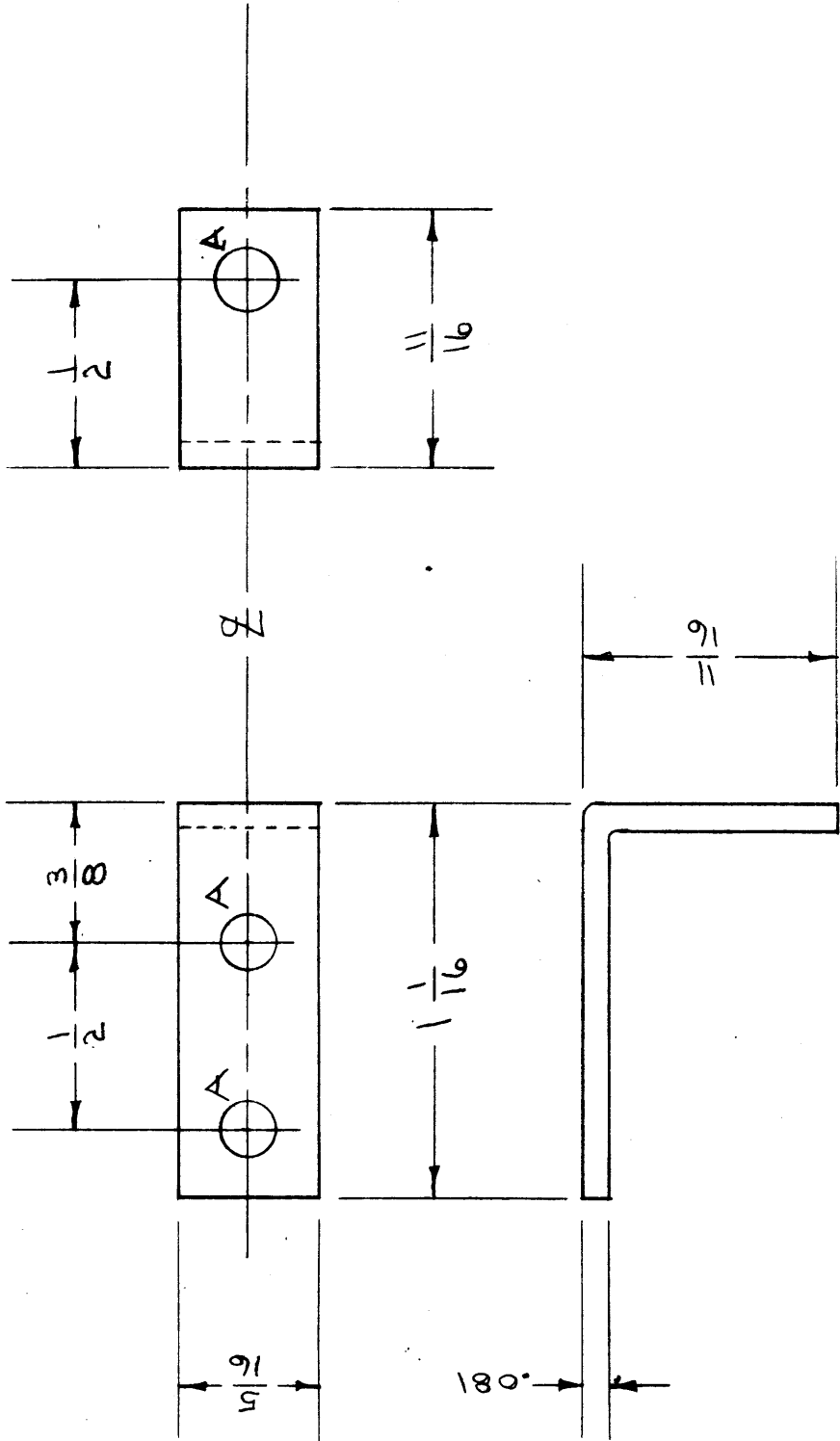
MAXIMUM ALLOWABLE TOLERANCES HAVE BEEN DETERMINED AND DEVIATIONS WILL BE CAUSE FOR REJECTION. REMOVE ALL BURRS AND SHARP EDGES

RELEASED

MAR 20 1953

MS-343
C

A- 5/32 (.156) D. 3 REED.



NOTICE TO PERSONS RECEIVING THIS DRAWING
 THE TECHNICAL MATERIEL CORPORATION claims proprietary right in the material disclosed hereon. This drawing is issued in confidence for engineering information only and may not be reproduced or used to manufacture anything shown hereon without permission from THE TECHNICAL MATERIEL CORPORATION to the user. This drawing is loaned for mutual assistance and is subject to recall at any time.

Property of:
 THE TECHNICAL MATERIEL CORPORATION
 MAMARONECK, NEW YORK

ISSUE	ITEM	CHAN ED FROM	DATE	CN. NO.	DRAFTS	CHECKER	ENG. APP.
C	1	S-404 WAS S-1D1	12/11/52	1001	AD		EMN
B	1	1/8" HOLE DELETED	8/20/52	2	APR	USC	
A	7	BLANK SIZE ADDED	5/16/50	1	A.S.	APR	

ALL OTHERS
 DEC. DIM. ± 1/16
 FRAC. DIM. ± 1/32
 AN ULAR DIM. ±

TOLERANCES
 SCALE: #

DRILL PUNCH, COMMERCIAL STOCK
 SIZES AND MANUFACTURERS
 TOLERANCES ARE NOT INCLUDED.

REQ. ITEM	PART NO.	DESCRIPTION	SYMBOL
	. 081	THE TECHNICAL MATERIEL CORP. MAMARONECK. NEW YORK	
ALUMINUM	WEIGHT PER PC. #	BRACKET, TERM. 3D.	
MATERIAL			
52S H32			
TYPE & TEMPER			
#			
HEAT TREAT. SPEC.			
S-404 YELLOW IRIDITE			
FINISH & SPEC. NO.			

USED ON

MODEL
FFR

PROJECT NO.
174

DATE
3-20-53

ASBY. NO.

IF IT IS FOUND DESIRABLE TO CHANGE ANY TOLERANCE OR OTHER DETAIL SPECIFIED ON THIS DRAWING NOTIFY THE PURCHASER PROMPTLY.

MAXIMUM ALLOWABLE TOLERANCES HAVE BEEN DETERMINED AND DEVIATIONS WILL BE CAUSE FOR REJECTION. REMOVE ALL BURRS AND SHARP EDGES

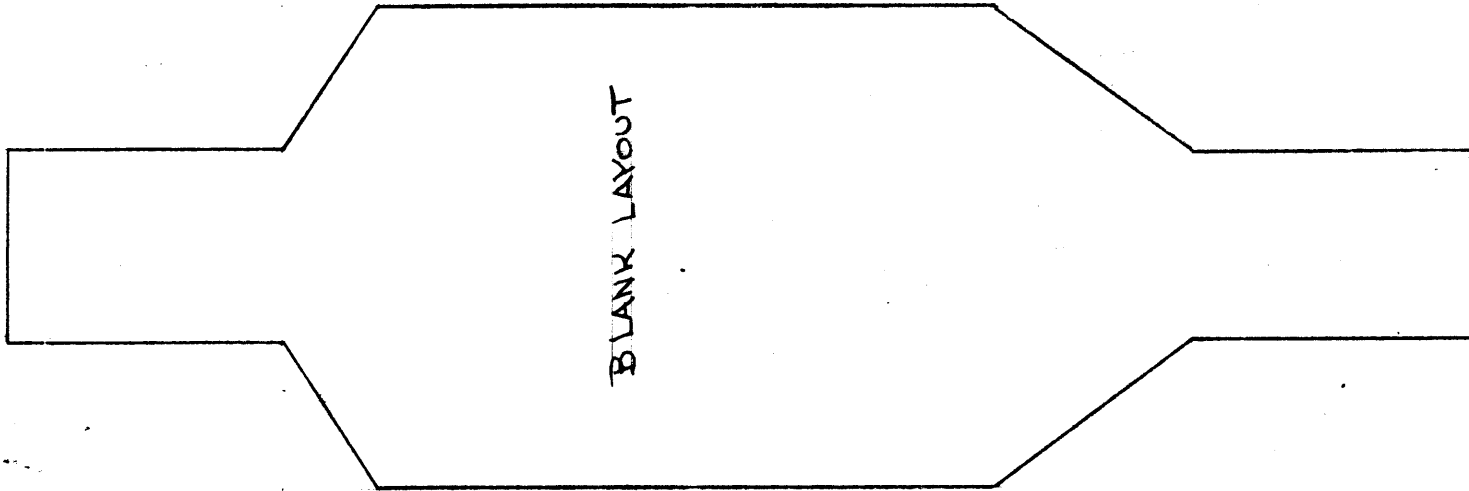
RELEASED

HOLES

REQ

- A - 5/32 (.156) D. 2
- B - 5/16 (.312) D. 2
- C - 1/8 (.125) D. 3
- D - .161-.164 D. 1

MS-348



NOTICE TO PERSONS RECEIVING THIS DRAWING

THE TECHNICAL MATERIEL CORPORATION claims proprietary right in the material disclosed hereon. This drawing is issued in confidence for engineering information only and may not be reproduced or used to manufacture anything shown hereon without permission from THE TECHNICAL MATERIEL CORPORATION to the user. This drawing is loaned for mutual assistance and is subject to recall at any time.

Property of:

THE TECHNICAL MATERIEL CORPORATION
MAMARONECK, NEW YORK

ISSUE	ITEM	CHANGED FROM	DATE	CN. NO.	DRAFTS	CHECKER	ENG. APP.
1	MS-348	MS-348	2-1-65	1382	PL	GRS	NRK

SCALE: $\frac{1}{2}$

DRILL PUNCH, COMMERCIAL STOCK
SIZES AND MANUFACTURERS
TOLERANCES ARE NOT INCLUDED.

SEC. DIM. \pm
FRAG. DIM. $\pm \frac{1}{4}$
ANGULAR DIM. \pm

DAC-1	180	A-455	6-11-53
MODEL	PROJECT NO.	APPY. NO.	DATE

1	1	NT129-440-4	NUTS PLAINS SPLINE
REQ. ITEM	PART NO.	DESCRIPTION	
.064		THE TECHNICAL MATERIEL CORP. MAMARONECK, NEW YORK	
ALUMINUM		MOUNTING PLATE	
5052-H32			
TYPE & TEMPER			
HEAT TREAT. SPEC.			
S-404 YELLOW IRIDITE			
FINISH & SPEC. MS			

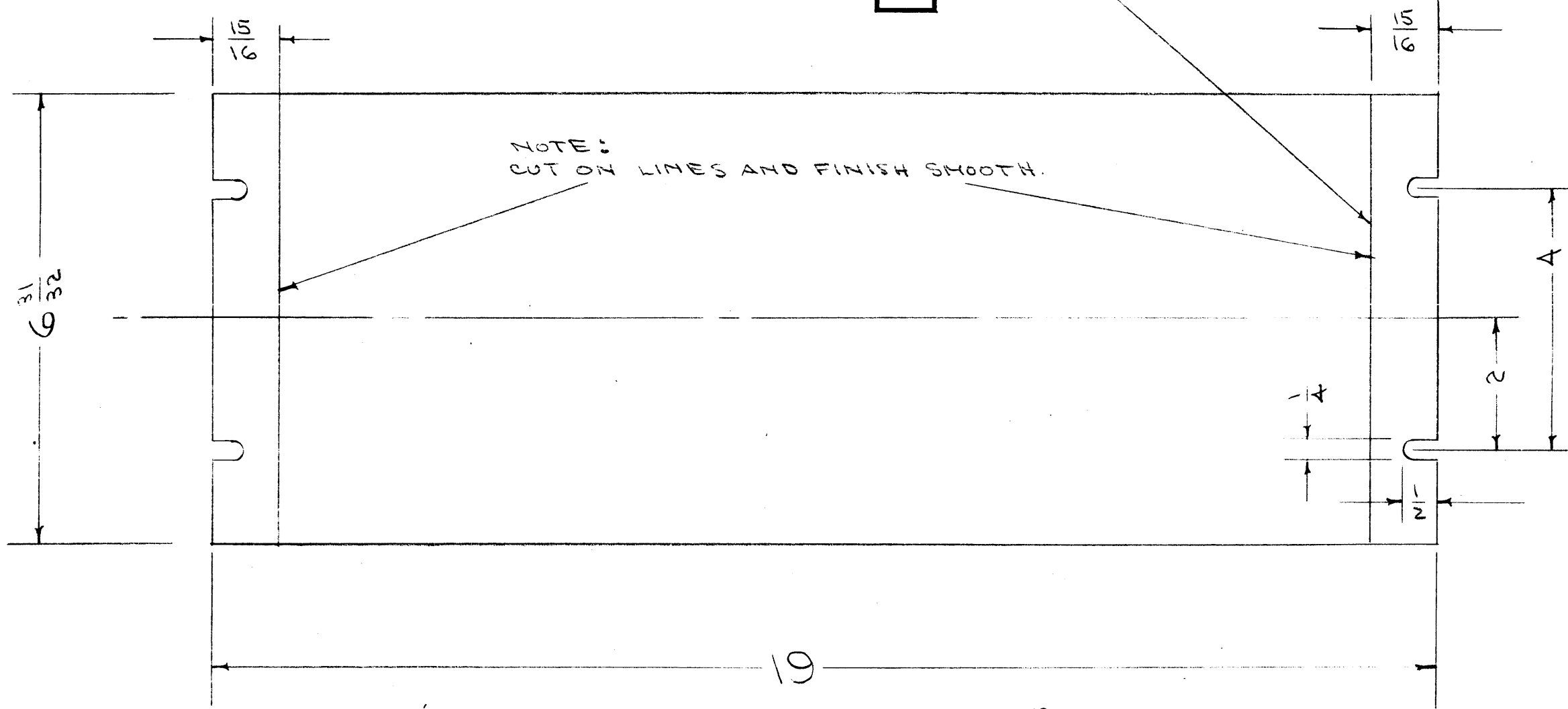
D.D.D. 6-11-53	ELC. DES. APP.	FINAL APPR.
DRAWN	CHECKED	
JAG		MS-348

IF IT IS FOUND DESIRABLE TO CHANGE ANY TOLERANCE OR OTHER DETAIL SPECIFIED ON THIS DRAWING NOTIFY THE PURCHASER PROMPTLY.

MAXIMUM ALLOWABLE TOLERANCES HAVE BEEN DETERMINED AND DEVIATIONS WILL BE CAUSE FOR REJECTION. REMOVE ALL BURRS AND SHARP EDGES

MS-353

SCRIBE LINES 15/16 FROM EACH END



NOTICE TO PERSONS RECEIVING THIS DRAWING
 THE TECHNICAL MATERIEL CORPORATION claims proprietary right in the material disclosed hereon. This drawing is issued in confidence for engineering information only and may not be reproduced or used to manufacture anything shown hereon without permission from THE TECHNICAL MATERIEL CORPORATION to the user. This drawing is loaned for ~~material~~ assistance and is subject to recall at any time.

Property of:
 THE TECHNICAL MATERIEL CORPORATION
 MAMARONECK, NEW YORK

REF: DWG. NO. MS-338

REDRAWN - NO CHANGE	9/1/54	C.D.D.	<i>[Signature]</i>
ISSUE	ITEM	CHANGED FROM	DATE CN. NO. DRAFTS CHECKER ENG. APP.
TOLERANCES		SCALE:	
ALL OTHERS	DEC. DIM. ± FRAC. DIM. ± ANGULAR DIM. ±	DRILL, PUNCH, COMMERCIAL STOCK SIZES AND MANUFACTURERS TOLERANCES ARE NOT INCLUDED.	

1	DDR-2			9-1-54
REQ. PER UNIT	MODEL	PROJECT NO.	ASS'Y. NO.	DATE
USED ON				

REQ. ITEM	PART NO.	DESCRIPTION	SYMBOL
	3/16 THK.	THE TECHNICAL MATERIEL CORP. MAMARONECK, NEW YORK	
	STOCK SIZE		
ALUMINUM	—	PANEL & NOTCHED SIDES	
MATERIAL	WEIGHT PER PC.	CABINET DRAWER DDR-2 RACK	
24S-T3			
TYPE & TEMPER		C.D.D. 9-1-54	
		DRAWN	ELEC. DES. APP. MECH. DES. APP.
		<i>[Signature]</i>	<i>ARB</i>
HEAT TREAT. SPEC.		CHECKED	FINAL APPROVAL
		WAS BMS 053	MS-353
FINISH & SPEC. NO.			

IF IT IS FOUND DESIRABLE TO CHANGE ANY TOLERANCE OR OTHER DETAIL SPECIFIED ON THIS DRAWING NOTIFY THE PURCHASER PROMPTLY.

MAXIMUM ALLOWABLE TOLERANCES HAVE BEEN DETERMINED AND DEVIATIONS WILL BE CAUSE FOR REJECTION. REMOVE ALL BURRS AND SHARP EDGES

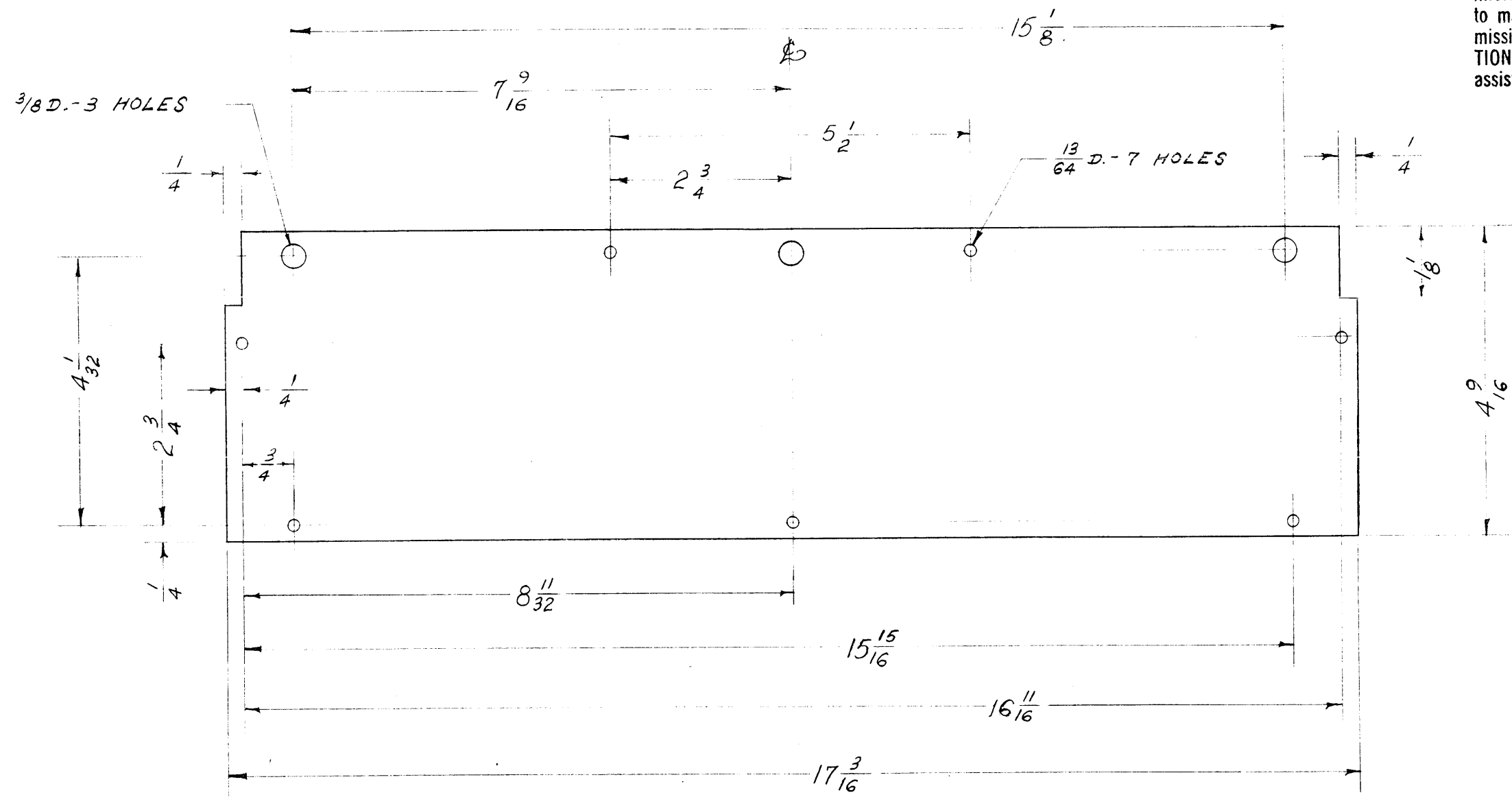
MS-366 B

NOTICE TO PERSONS RECEIVING THIS DRAWING

THE TECHNICAL MATERIEL CORPORATION claims proprietary right in the material disclosed hereon. This drawing is issued in confidence for engineering information only and may not be reproduced or used to manufacture anything shown hereon without permission from THE TECHNICAL MATERIEL CORPORATION to the user. This drawing is loaned for mutual assistance and is subject to recall at any time.

Property of:

THE TECHNICAL MATERIEL CORPORATION
MAMARONECK, NEW YORK



REQ.	ITEM	PART NO.	DESCRIPTION	SYMBOL
		.051	THE TECHNICAL MATERIEL CORP.	
		STOCK SIZE	MAMARONECK, NEW YORK	
	ALUMINUM	—H—	DUST COVER	
	MATERIAL	WEIGHT PER PC.	LPP-1,2,3	
	52S - H32			
	TYPE & TEMPER			
	—H—			
	HEAT TREAT. SPEC.			
	S-404 YELLOW IRIDITE			
	FINISH & SPEC. NO.			

ISSUE	ITEM	CHANGED FROM	DATE	CN. NO.	DRAFTS	CHECKER	ENG. APP.
B	1	S-404 WAS S-101	12/11/54	1001	PB	EMN	
A	1	REDRAWN - REVISED	5-5-55	1	PB	EMN	

TOLERANCES	SCALE:
ALL OTHERS DEC. DIM. ± FRAC. DIM. ± 1/64 ANGULAR DIM. ±	DRILL, PUNCH, COMMERCIAL STOCK SIZES AND MANUFACTURERS TOLERANCES ARE NOT INCLUDED.

REQ. PER UNIT	MODEL	PROJECT NO.	ASS'Y. NO.	DATE
2	LPP-1,2,3			5-5-55

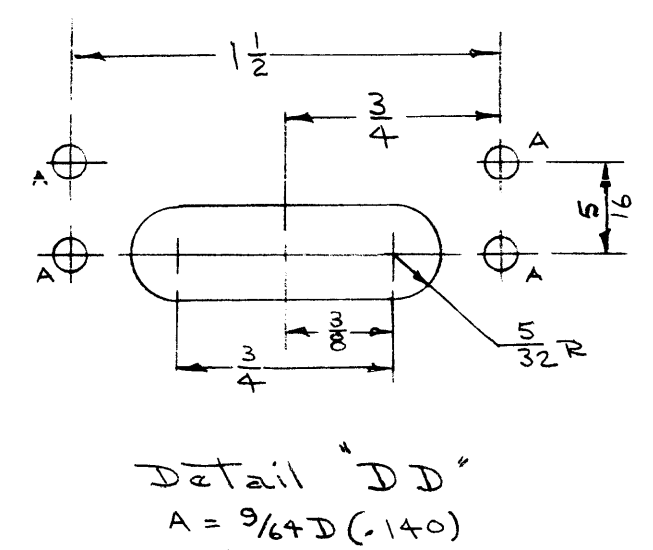
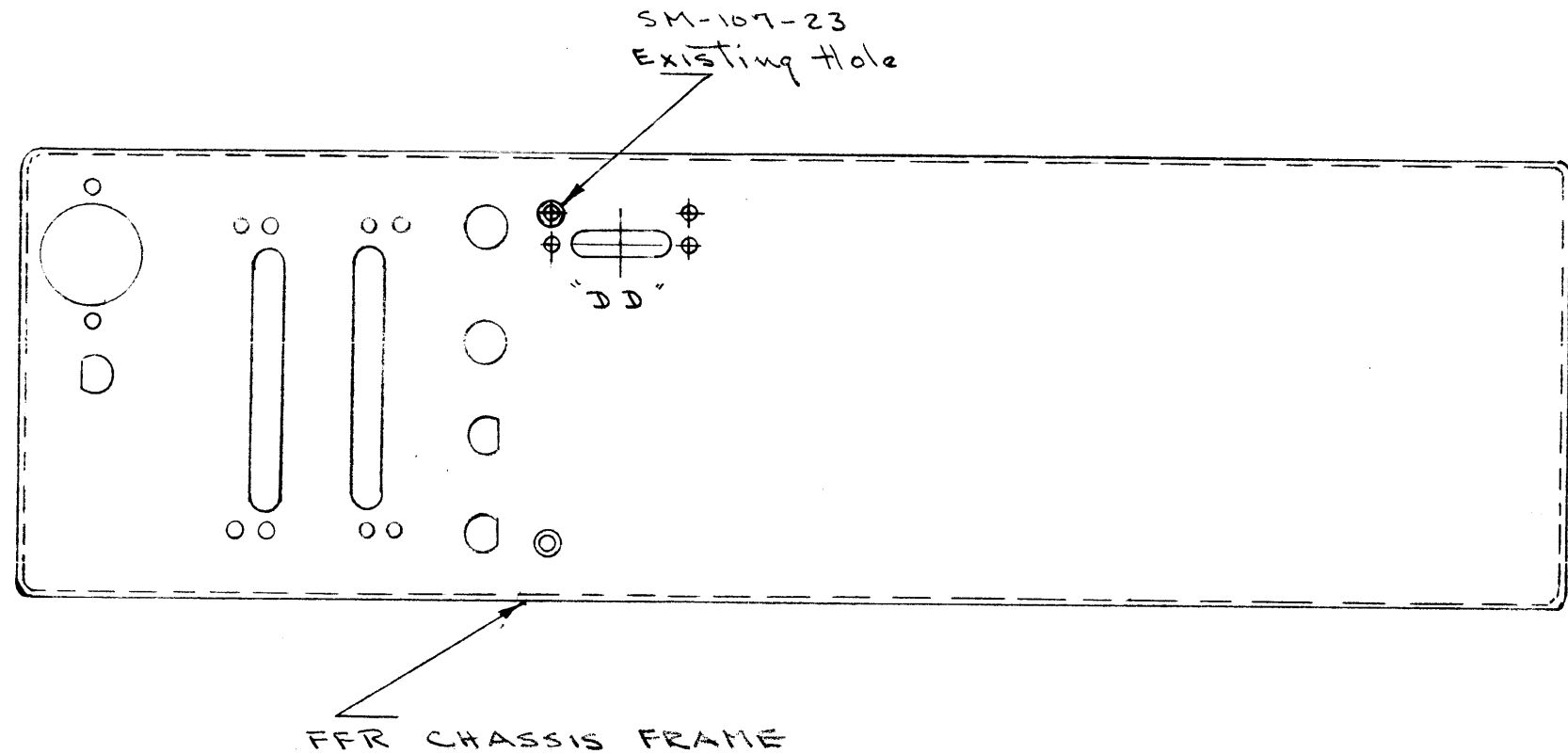
USED ON

MS-366 B

IF IT IS FOUND DESIRABLE TO CHANGE ANY TOLERANCE OR OTHER DETAIL SPECIFIED ON THIS DRAWING NOTIFY THE PURCHASER PROMPTLY.

MAXIMUM ALLOWABLE TOLERANCES HAVE BEEN DETERMINED AND DEVIATIONS WILL BE CAUSE FOR REJECTION. REMOVE ALL BURRS AND SHARP EDGES

MS-368 A



NOTICE TO PERSONS RECEIVING THIS DRAWING

THE TECHNICAL MATERIEL CORPORATION claims proprietary right in the material disclosed hereon. This drawing is issued in confidence for engineering information only and may not be reproduced or used to manufacture anything shown hereon without permission from THE TECHNICAL MATERIEL CORPORATION to the user. This drawing is loaned for mutual assistance and is subject to recall at any time.

Property of:
THE TECHNICAL MATERIEL CORPORATION
 MAMARONECK, NEW YORK

REQ.	ITEM	PART NO.	DESCRIPTION	SYMBOL
			THE TECHNICAL MATERIEL CORP. MAMARONECK, NEW YORK	
			MODIFICATION OF FFR FOR REMOTE CONTROL OF RF GAIN & AVC ON-OFF	
			DRAWN: <i>JAR</i>	ELEC. DES. APP. G.T.O.
			CHECKED:	MECH. DES. APP. <i>PJB</i>
			HEAT TREAT. SPEC.	FINAL APPROVAL: <i>PJB</i>
			FINISH & SPEC. NO.	MS-368 A

A	1	TITLE CHANGED.	7/8/53	1	CDD		<i>PJB</i>
ISSUE	ITEM	CHANGED FROM	DATE	CN. NO.	DRAFTS	CHECKER	ENG. APP.
TOLERANCES			SCALE:				
ALL OTHERS	DEC. DIM. ±	FRAC. DIM. ±	ANGULAR DIM. ±	DRILL, PUNCH, COMMERCIAL STOCK SIZES AND MANUFACTURERS TOLERANCES ARE NOT INCLUDED.			

FFR			5-20-53
MODEL	PROJECT NO.	ASS'Y. NO.	DATE
USED ON			

IF IT IS FOUND DESIRABLE TO CHANGE ANY TOLERANCE OR OTHER DETAIL SPECIFIED ON THIS DRAWING NOTIFY THE PURCHASER PROMPTLY.

MAXIMUM ALLOWABLE TOLERANCES HAVE BEEN DETERMINED AND DEVIATIONS WILL BE CAUSE FOR REJECTION. REMOVE ALL BURRS AND SHARP EDGES

RELEASED

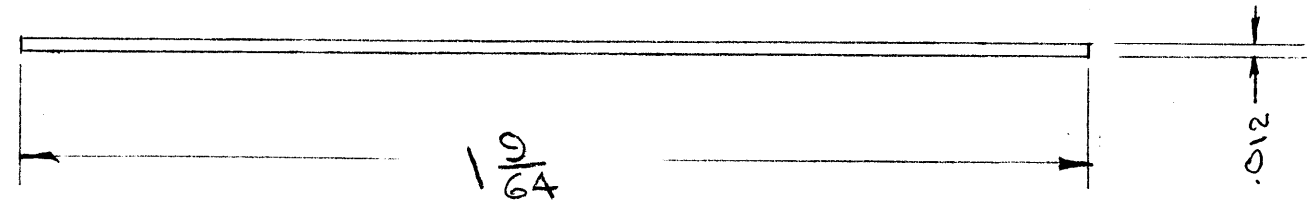
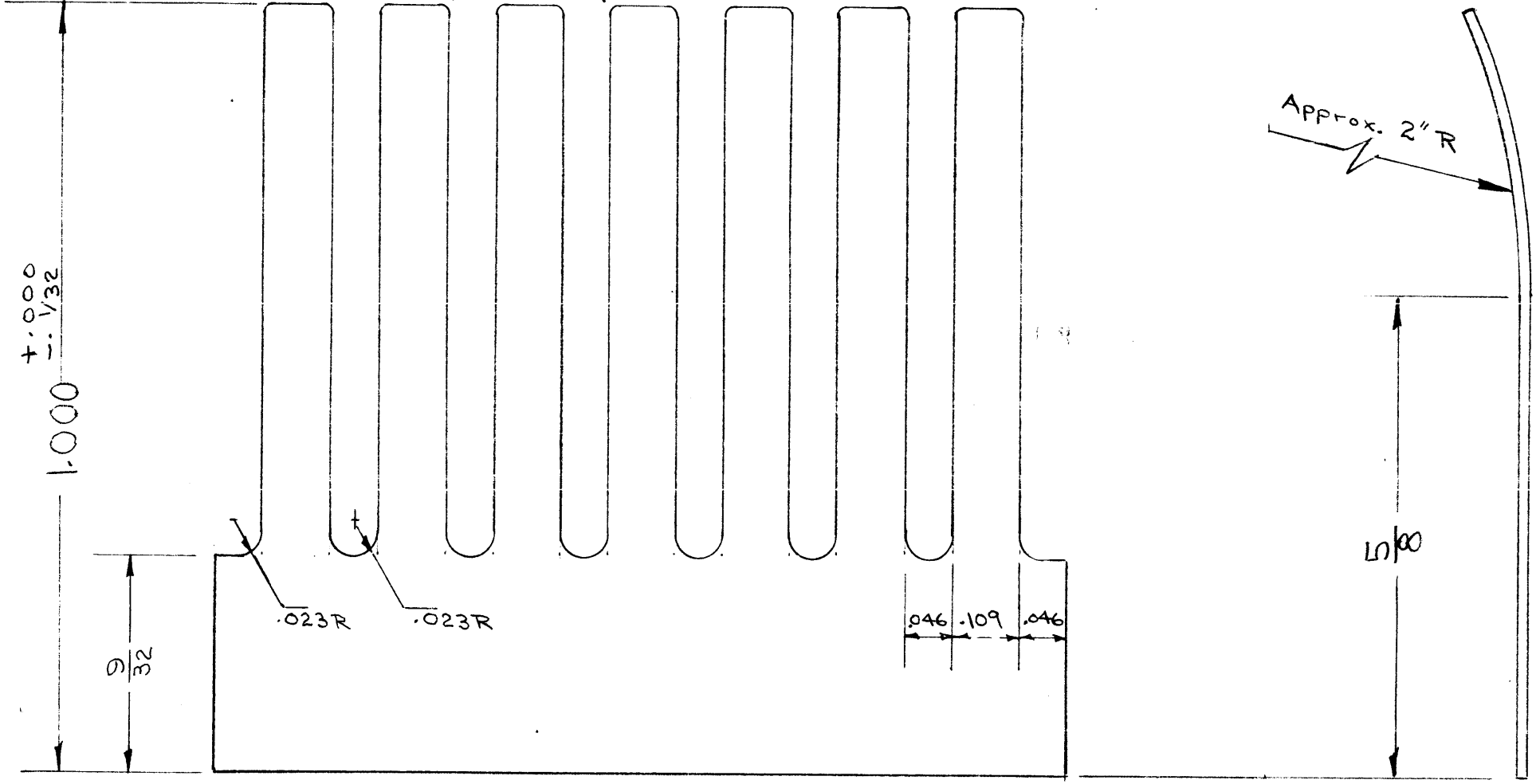
MS-372

NOTICE TO PERSONS RECEIVING THIS DRAWING

THE TECHNICAL MATERIEL CORPORATION claims proprietary right in the material disclosed hereon. This drawing is issued in confidence for engineering information only and may not be reproduced or used to manufacture anything shown hereon without permission from THE TECHNICAL MATERIEL CORPORATION to the user. This drawing is loaned for mutual assistance and is subject to recall at any time.

Property of:
THE TECHNICAL MATERIEL CORPORATION
MAMARONECK, NEW YORK

Remove Sharp Edges from fingers



REQ. ITEM	PART NO.	DESCRIPTION	SYMBOL
.012		THE TECHNICAL MATERIEL CORP. MAMARONECK, NEW YORK	
PHOSPHOR BRONZE		FINGER PLATE	
GRADE "A" SPRING			
TYPE & TEMPER		Handwritten: 6-11-53	
HEAT TREAT. SPEC.		Handwritten: 6-12-53	
FINISH & SPEC. NO.		Handwritten: MS-372	

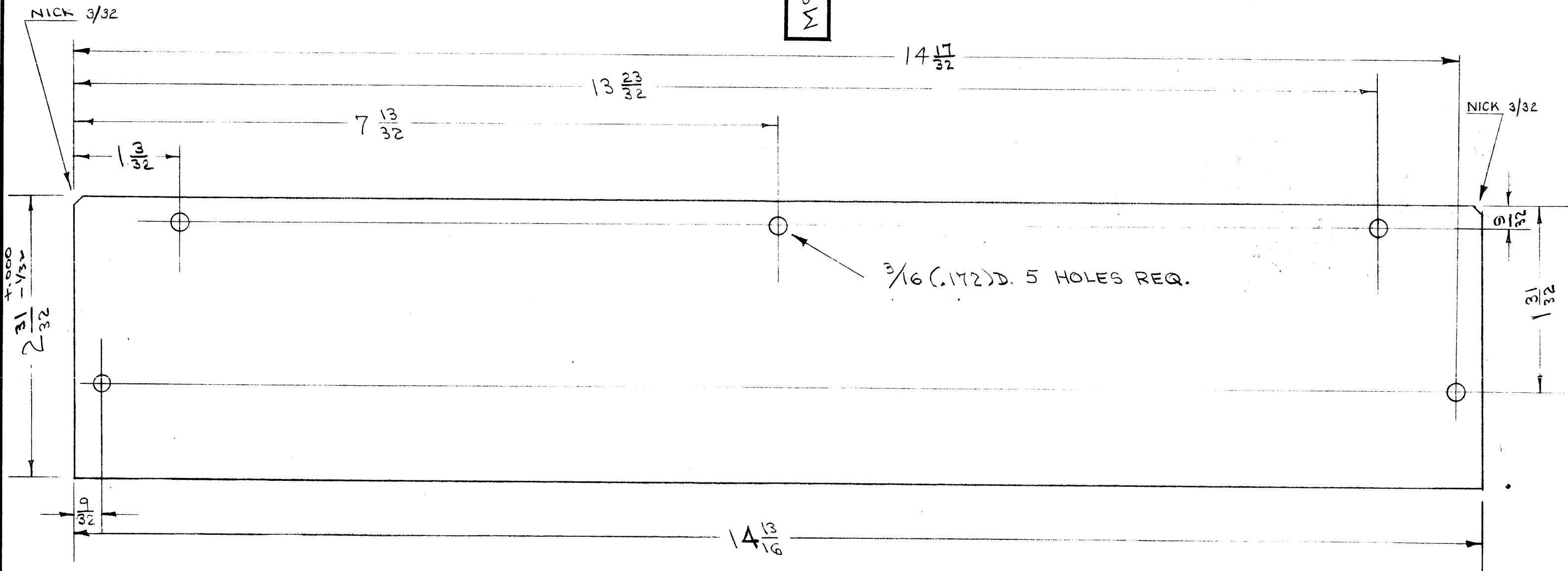
ISSUE	ITEM	CHANGED FROM	DATE	CN. NO.	DRAFTS	CHECKER	ENG. APP.
TOLERANCES							
ALL OTHERS		DEC. DIM. ± .005	SCALE:				
		FRAC. DIM. ± 1/64	DRILL, PUNCH, COMMERCIAL STOCK SIZES AND MANUFACTURERS TOLERANCES ARE NOT INCLUDED.				
		ANGULAR DIM. ±					

JJ-117	A-479	6-11-53
MODEL	PROJECT NO.	ASS'Y. NO.
		DATE

IF IT IS FOUND DESIRABLE TO CHANGE ANY TOLERANCE OR OTHER DETAIL SPECIFIED ON THIS DRAWING NOTIFY THE PURCHASER PROMPTLY.

MAXIMUM ALLOWABLE TOLERANCES HAVE BEEN DETERMINED AND DEVIATIONS WILL BE CAUSE FOR REJECTION. REMOVE ALL BURRS AND SHARP EDGES

MS-383 A



NOTICE TO PERSONS RECEIVING THIS DRAWING

THE TECHNICAL MATERIEL CORPORATION claims proprietary right in the material disclosed hereon. This drawing is issued in confidence for engineering information only and may not be reproduced or used to manufacture anything shown hereon without permission from THE TECHNICAL MATERIEL CORPORATION to the user. This drawing is loaned for mutual assistance and is subject to recall at any time.

Property of:

THE TECHNICAL MATERIEL CORPORATION
MAMARONECK, NEW YORK

REQ.	ITEM	PART NO.	DESCRIPTION	SYMBOL
	.064		THE TECHNICAL MATERIEL CORP.	
	STOCK SIZE		MAMARONECK. NEW YORK	
	ALUMINUM	#	TOP COVER ASSEMBLY	
	MATERIAL	WEIGHT PER PC.	RSF-2	
	525-H32		C.D.D. 8-19-53	KZ
	TYPE & TEMPER		DRAWN	ELEC. DES. APP. MECH. DES. APP.
	#		WJC	
	HEAT TREAT. SPEC.		A. J. J.	
	S-404 YELLOW IRIDITE		CHECKED	FINAL APPROVAL
	FINISH & SPEC. NO.			

A	I	S-404 WAS S-101	7/11/59	1001	AB		EMN
ISSUE	ITEM	CHANGED FROM	DATE	CN. NO.	DRAFTS	CHECKER	ENG. APP.
TOLERANCES		SCALE: 1/16" = 1"					
ALL OTHERS	DEC. DIM. ± 1/64	DRILL, PUNCH, COMMERCIAL STOCK SIZES AND MANUFACTURERS TOLERANCES ARE NOT INCLUDED.					
	FRAC. DIM. ±						
	ANGULAR DIM. ±						

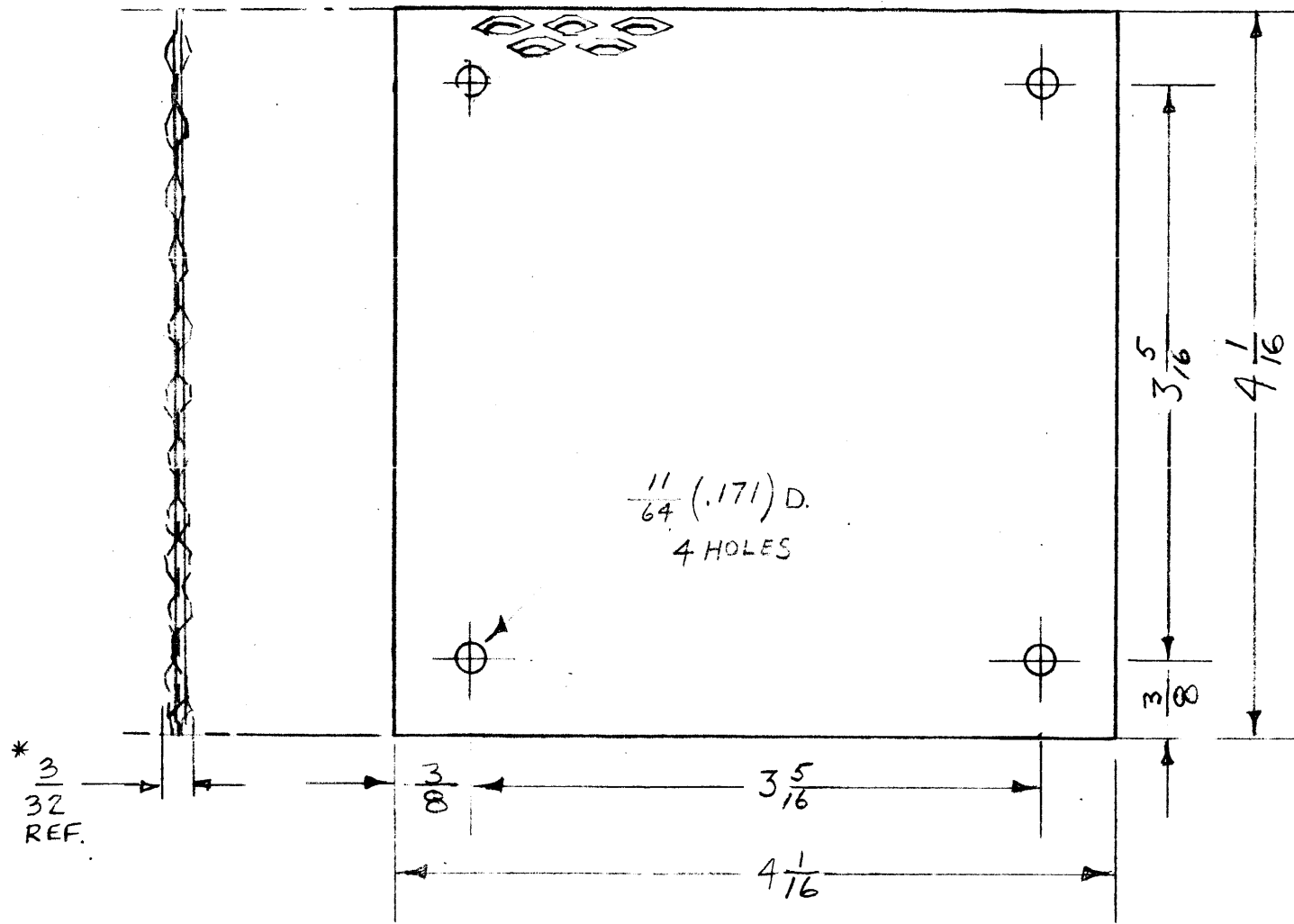
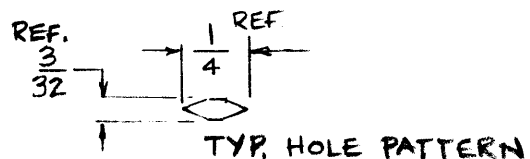
RSF-2	170	A-748	9/30/54
MODEL	PROJECT NO.	ASS'Y. NO.	DATE
USED ON			

MS-383 A

IF IT IS FOUND DESIRABLE TO CHANGE ANY TOLERANCE OR OTHER DETAIL SPECIFIED ON THIS DRAWING NOTIFY THE PURCHASER PROMPTLY.

MAXIMUM ALLOWABLE TOLERANCES HAVE BEEN DETERMINED AND DEVIATIONS WILL BE CAUSE FOR REJECTION. REMOVE ALL BURRS AND SHARP EDGES

MS-395 A



NOTICE TO PERSONS RECEIVING THIS DRAWING

THE TECHNICAL MATERIEL CORPORATION claims proprietary right in the material disclosed hereon. This drawing is issued in confidence for engineering information only and may not be reproduced or used to manufacture anything shown hereon without permission from THE TECHNICAL MATERIEL CORPORATION to the user. This drawing is loaned for mutual assistance and is subject to recall at any time.

Property of:
THE TECHNICAL MATERIEL CORPORATION
MAMARONECK, NEW YORK

NOTE.
MATERIAL: BLACK ANODIZED
EXPANDED ALUMINUM
PATTERN NO. EM-2 *

* 5401-528 (36 X 48 SHEET) 88 PC PER SHEET APPROX.

REQ.	ITEM	PART NO.	DESCRIPTION	SYMBOL
	*		THE TECHNICAL MATERIEL CORP. MAMARONECK, NEW YORK	
	SEE NOTE		SPEAKER GRILL	
	SEE NOTE		RSC-2	
	SEE NOTE		TYPE & TEMPER	
	SEE NOTE		HEAT TREAT. SPEC.	
	SEE NOTE		FINISH & SPEC. NO.	

ISSUE	ITEM	CHANGED FROM	DATE	CN. NO.	DRAFTS	CHECKER	ENG. APP.
B		MATL WAS PERF.	6-21-78	21662	WES		E.H.
A	1	S-404 WAS S-101	12/11/59	1001	AB		EMN

TOLERANCES	SCALE: FULL	MODEL: RSC-2 (AB, C, D, E)	PROJECT NO.: 170	ASS'Y. NO.:	DATE: 11-15-54
ALL OTHERS	DEC. DIM. ± FRAC. DIM. ± 1/64 ANGULAR DIM. ±	DRILL, PUNCH, COMMERCIAL STOCK SIZES AND MANUFACTURERS TOLERANCES ARE NOT INCLUDED.	USED ON		