

IF IT IS FOUND DESIRABLE TO CHANGE ANY TOLERANCE OR OTHER DETAIL SPECIFIED ON THIS DRAWING NOTIFY THE PURCHASER PROMPTLY.

UNLESS OTHERWISE SPECIFIED DIMENSIONS ARE IN INCHES AND INCLUDE CHEMICALLY APPLIED OR PLATED FINISHES

MS-302 B

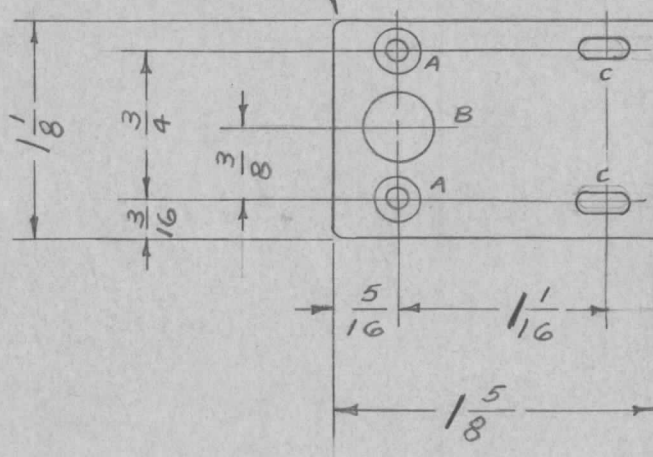
MAXIMUM ALLOWABLE TOLERANCES HAVE BEEN DETERMINED AND DEVIATIONS WILL BE CAUSE FOR REJECTION. REMOVE ALL BURRS AND SHARP EDGES

DECIMALS	TOLERANCES	FRACTIONS
.X ± .05		± 1/64
.XX ± .01		ANGLES
.XXX ± .005		± 0° 30'

CUT HERE
GUARANTEED
2-56

REQ. PER UNIT	USED ON			
	MODEL	PROJECT NO.	ASS'Y. NO.	DATE
1	VOX	101		1-24-55
1	VOX-1-2	291		1-24-55

ROUND OFF 2 CORNERS
1/8 RADIUS



A = DRILL & C'S SINK #3 FLAT HEAD SCREW 2 REQ.
B = 3/8 (.375) D. 1 REQ.
C = 9/64 X 9/32 SLOTS 2 REQ.

REQ.	ITEM	PART NO.	DESCRIPTION	SYMBOL
		.051 THK.	THE TECHNICAL MATERIEL CORP.	
		STOCK SIZE	MAMARONECK, NEW YORK	
		ALUMINUM	FRONT DOOR	
		MATERIAL	LOCK BRACKET	
		WEIGHT PER PC.		
		525-H32		
		TYPE & TEMPER		
		HEAT TREAT. SPEC.		
		S404 IRIDITE		
		FINISH & SPEC. NO.		

B	1	S404-IRIDITE WAS S101-CAUSTIC DIP	12-7 59	12-7 59	P	EMN
+	+	REDRAWN NO CHANGE	1-24-55	+	P.B. JAR	WDC
ISSUE	ITEM	CHANGED FROM	DATE	CN. NO.	DRAFTS	CHECKER

TOLERANCES		SCALE
ALL OTHERS	DEC. DIM. ± FRAC. DIM. ± 1/64 ANGULAR DIM. ±	DRILL, PUNCH, COMMERCIAL STOCK SIZES AND MANUFACTURERS TOLERANCES ARE NOT INCLUDED.

DRAWN	ELEC. DES. APP.	MECH. DES. APP.
JAR 1-24-55		WDC
CHECKED	FINAL APPROVAL	
	MS-302	B

IF IT IS FOUND DESIRABLE TO CHANGE ANY TOLERANCE OR OTHER DETAIL SPECIFIED ON THIS DRAWING NOTIFY THE PURCHASER PROMPTLY.

UNLESS OTHERWISE SPECIFIED DIMENSIONS ARE IN INCHES AND INCLUDE CHEMICALLY APPLIED OR PLATED FINISHES

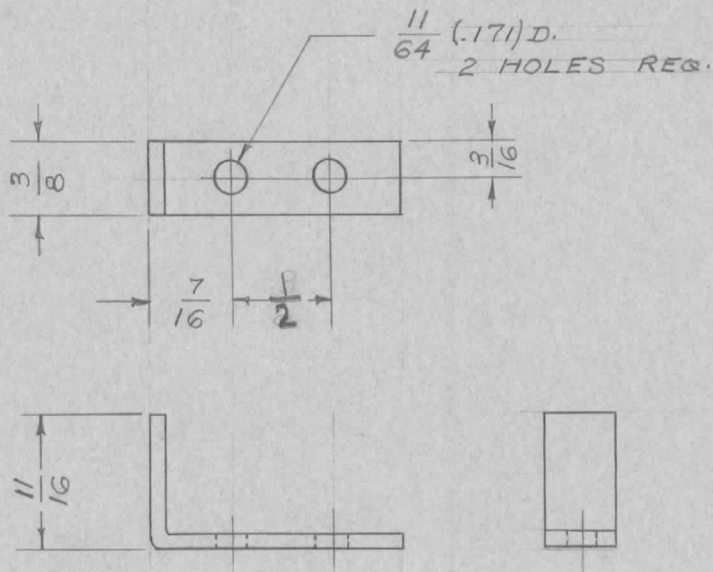
MS-305 A

MAXIMUM ALLOWABLE TOLERANCES HAVE BEEN DETERMINED AND DEVIATIONS WILL BE CAUSE FOR REJECTION. REMOVE ALL BURRS AND SHARP EDGES

DECIMALS	TOLERANCES	FRACTIONS
X ± .05		± 1/64
.XX ± .01		ANGLES ± 0° 30'
.XXX ± .005		

CUT HERE
OUTWARRANTED
2/66

REQ. PER UNIT	USED ON			
	MODEL	PROJECT NO.	ASS'Y. NO.	DATE
1	VOX		A-424	8-15-55



BLANK SIZE
3/8 x 1 13/16

REQ.	ITEM	PART NO.	DESCRIPTION	SYMBOL
		.081	THE TECHNICAL MATERIEL CORP.	
		STOCK SIZE	MAMARONECK. NEW YORK	
	ALUMINUM	#	PILOT LIGHT BRACKET	
	MATERIAL	WEIGHT PER PC.	VOX	
		52 S H 32		
	TYPE & TEMPER		AP-8-15-55	
		#	DRAWN	ELEC. DES. APP. MECH. DES. APP.
	HEAT TREAT. SPEC.		JADe	WOC
	FINISH & SPEC. NO.	S404 IRIDITE DIP	CHECKED	FINAL APPROVAL
				MS-305 A

A	1	S404 - IRIDITE WAS S101 - CAUSTIC DIP	12-7 52	1001	P	EMN
-	+	REDRAWN NO CHANGE	8/15/55	+	16	JADe WOC

ISSUE	ITEM	CHANGED FROM	DATE	CN. NO.	DRAFTS	CHECKER	ENG. APP.
		TOLERANCES	SCALE				
ALL OTHERS	DEC. DIM. ± FRAC. DIM. ± ANGULAR DIM. ±	DRILL, PUNCH, COMMERCIAL STOCK SIZES AND MANUFACTURERS TOLERANCES ARE NOT INCLUDED.					

IF IT IS FOUND DESIRABLE TO CHANGE ANY TOLERANCE OR OTHER DETAIL SPECIFIED ON THIS DRAWING NOTIFY THE PURCHASER PROMPTLY.

MAXIMUM ALLOWABLE TOLERANCES HAVE BEEN DETERMINED AND DEVIATIONS WILL BE CAUSE FOR REJECTION. REMOVE ALL BURRS AND SHARP EDGES

UNLESS OTHERWISE SPECIFIED DIMENSIONS ARE IN INCHES AND INCLUDE CHEMICALLY APPLIED OR PLATED FINISHES

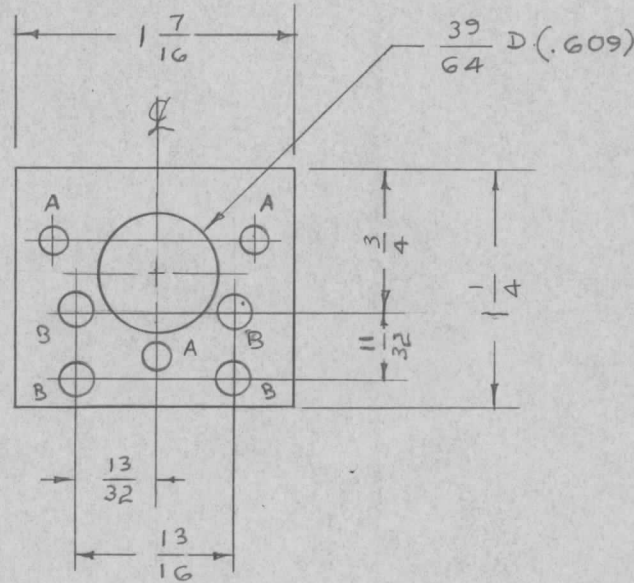
DECIMALS	TOLERANCES	FRACTIONS
.X ± .05		± 1/64
.XX ± .01		ANGLES ± 0° 30'
.XXX ± .005		

CUT HERE
GUARANTEED
PER. UNIT

MS-308 C

USED ON

MODEL	PROJECT NO.	ASS'Y. NO.	DATE
A-1000		A-422	12-17-54



A = #27 DRILL 3 HOLES
B = 3/16 D. 4 HOLES

NOTE:

FOUR PILOT HOLES ARE TO BE JIG DRILLED WITH THE SAME JIG USED FOR DWG. # MS-307 (THREE A HOLES & LARGE HOLE ONLY) REAM 39/64 D. HOLE (AFTER ETCHING) FOR A CLASS G TIGHT FIT OF NEW DEPARTURE CO. BEARING NO. #R4 OR MARLIN ROCKWELL CO. XA134

REQ.	ITEM	PART NO.	DESCRIPTION	SYMBOL
		3/16 THICK	THE TECHNICAL MATERIEL CORP. MAMARONECK, NEW YORK	
		STOCK SIZE		
		ALUMINUM	BEARING MOUNT	
		WEIGHT PER PC.		
		245-73		
		TYPE & TEMPER	P.B. 12-17-54	WDE
		HEAT TREAT. SPEC.	DRAWN	ELEC. DES. APP.
		FINISH & SPEC. NO.	12-17-54	MECH. DES. APP.
			CHECKED	FINAL APPROVAL
		S404-IRIDITE	SUPERCEDES	MS-308 C
			AMS-271-A	

ISSUE	ITEM	CHANGED FROM	DATE	CN. NO.	DRAFTS	CHECKER	ENG. APP.
C	1	S404-IRIDITE WAS S101-CAUSTIC	12-7-59	1001	P	JAR	EMN
B	1	REDRAWN NO CHANGE	12-17-54	#	P.B.	JAR	WDE

TOLERANCES	SCALE
ALL OTHERS DEC. DIM. ± FRAC. DIM. ± ANGULAR DIM. ±	DRILL, PUNCH, COMMERCIAL STOCK SIZES AND MANUFACTURERS TOLERANCES ARE NOT INCLUDED.

IF IT IS FOUND DESIRABLE TO CHANGE ANY TOLERANCE OR OTHER DETAIL SPECIFIED ON THIS DRAWING NOTIFY THE PURCHASER PROMPTLY.

UNLESS OTHERWISE SPECIFIED DIMENSIONS ARE IN INCHES AND INCLUDE CHEMICALLY APPLIED OR PLATED FINISHES

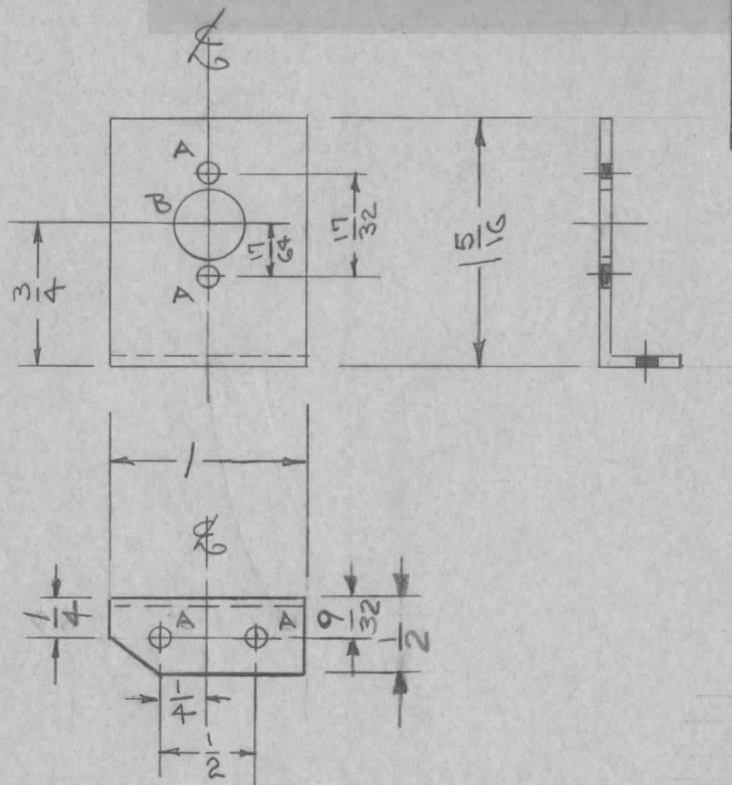
MS-309 E

MAXIMUM ALLOWABLE TOLERANCES HAVE BEEN DETERMINED AND DEVIATIONS WILL BE CAUSE FOR REJECTION. REMOVE ALL BURRS AND SHARP EDGES

DECIMALS	TOLERANCES	FRACTIONS
.X ± .05		± 1/64
.XX ± .01		ANGLES ± 0° 30'
.XXX ± .005		

CUT HERE GUARANTEED 2-16

REQ. PER UNIT	USED ON			
	MODEL	PROJECT NO.	ASS'Y. NO.	DATE
1	VOX		A-585	1-2-52
1	PMO 1/2			2-2-55
1	VOX 1/2			2-2-55
1	RTF			2-1-56
1	RTF-2	M/D		11-16-58



A = 9/64 D (.140) 4 REQ.
 B = 5/16 D (.312) 1 REQ.

BLANK SIZE
 1 1/2 x 1

ISSUE	ITEM	CHANGED FROM	DATE	CN. NO.	DRAFTS	CHECKER	ENG. APP.
E	1	9/32 DIM. RELOC. NOTCH, ADD	11/10/58	15168	AL	JCB	8
D	1	S404- IRIDITE WAS S101 - CAUSTIC DIP	12-7-59	1001	P		EMN
C	2	5/16 D. WAS 3/8 D.	11-20-59		DM	Wde	
B	1	COMPLETE REVISION	2/2/55	1	JAK	Wde	

REQ.	ITEM	PART NO.	DESCRIPTION	SYMBOL
			.081 THK.	
			STOCK SIZE	
			ALUMINUM	
			MATERIAL	WEIGHT PER PC.
			5052-H32	
			TYPE & TEMPER	
			HEAT TREAT. SPEC.	
			FINISH & SPEC. NO.	
			THE TECHNICAL MATERIEL CORP. MAMARONECK. NEW YORK	
			BRACKET, OVEN CONDENSER (COSC. ASSY.)	
			DRAWN	ELEC. DES. APP.
			CHECKED	FINAL APPROVAL
			MS-309	E

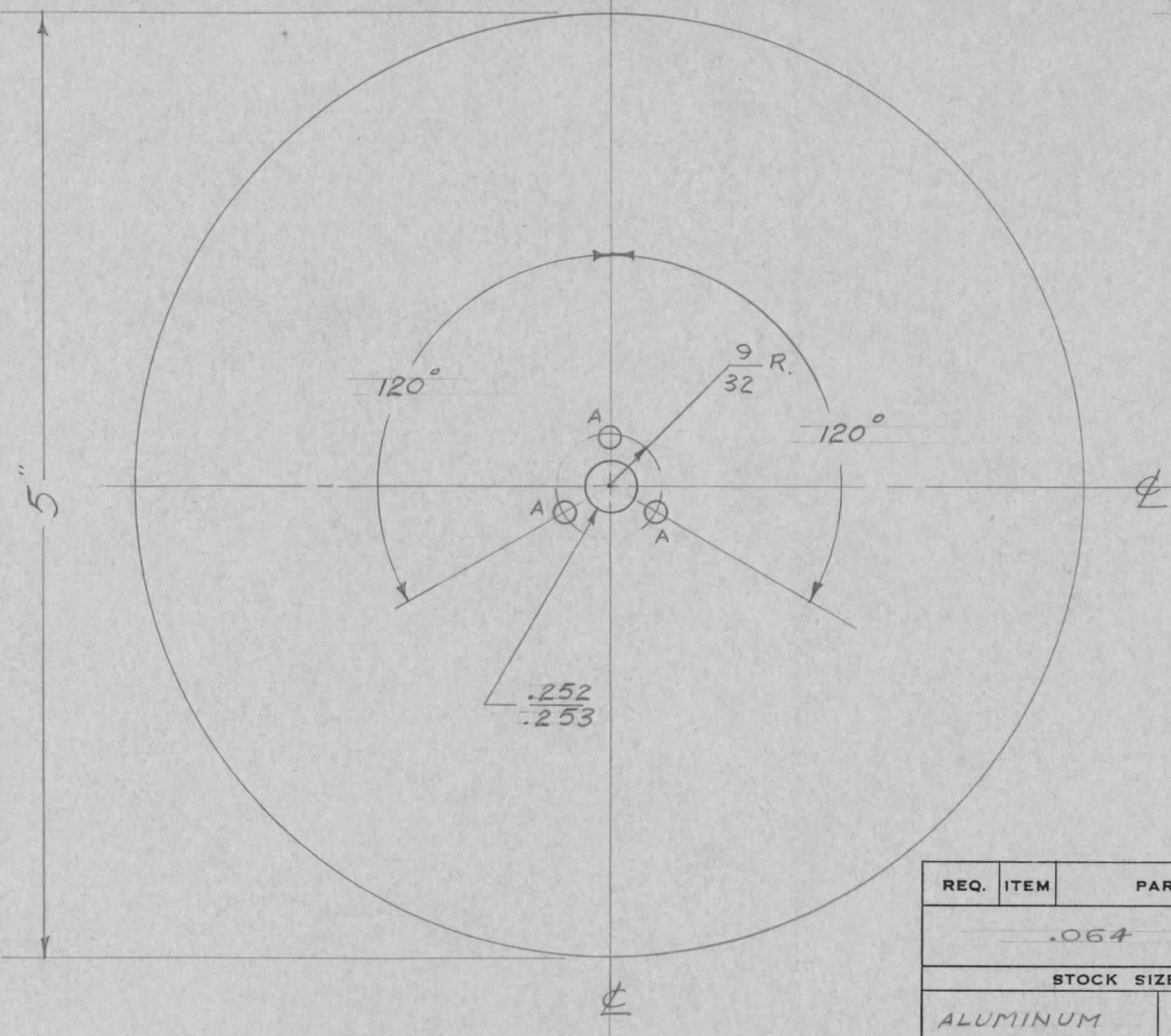
TOLERANCES	SCALE
ALL OTHERS DEC. DIM. ± FRAC. DIM. ± ANGULAR DIM. ±	DRILL, PUNCH, COMMERCIAL STOCK SIZES AND MANUFACTURERS TOLERANCES ARE NOT INCLUDED.

IF IT IS FOUND DESIRABLE TO CHANGE ANY TOLERANCE OR OTHER DETAIL SPECIFIED ON THIS DRAWING NOTIFY THE PURCHASER PROMPTLY.

MS-316

MAXIMUM ALLOWABLE TOLERANCES HAVE BEEN DETERMINED AND DEVIATIONS WILL BE CAUSE FOR REJECTION. REMOVE ALL BURRS AND SHARP EDGES

REQ. PER UNIT	USED ON			
	MODEL	PROJECT NO.	ASS'Y. NO.	DATE
1	VOX		A-415	8-12-55



$A = \frac{9}{64} (.140) D$ 3 HOLES REQ.

NOTE:
BLANKS TO BE SUPPLIED BY MFGR.

REQ.	ITEM	PART NO.	DESCRIPTION	SYMBOL
		.064	THE TECHNICAL MATERIEL CORP. MAMARONECK, NEW YORK	
		STOCK SIZE		
	ALUMINUM	—H—	DIAL BLANK	
		MATERIAL	WEIGHT PER PC.	
		525 H32		
		TYPE & TEMPER	P.B. 8-12-55	
		—H—	DRAWN	ELEC. DES. APP. MECH. DES. APP.
		HEAT TREAT. SPEC.	Checked	Final Approval
		—H—		
		FINISH & SPEC. NO.		

#	+	REDRAWN NO CHANGE	#	DATE	CN. NO.	DRAFTS	CHECKER	ENG. APP.
ISSUE ITEM CHANGED FROM			TOLERANCES					
ALL OTHERS			SCALE					
DEC. DIM. ±			DRILL, PUNCH, COMMERCIAL STOCK SIZES AND MANUFACTURERS TOLERANCES ARE NOT INCLUDED.					
FRAC. DIM. ± 1/64								
ANGULAR DIM. ± 1°								

MS-316

IF IT IS FOUND DESIRABLE TO CHANGE ANY TOLERANCE OR OTHER DETAIL SPECIFIED ON THIS DRAWING NOTIFY THE PURCHASER PROMPTLY.

UNLESS OTHERWISE SPECIFIED DIMENSIONS ARE IN INCHES AND INCLUDE CHEMICALLY APPLIED OR PLATED FINISHES

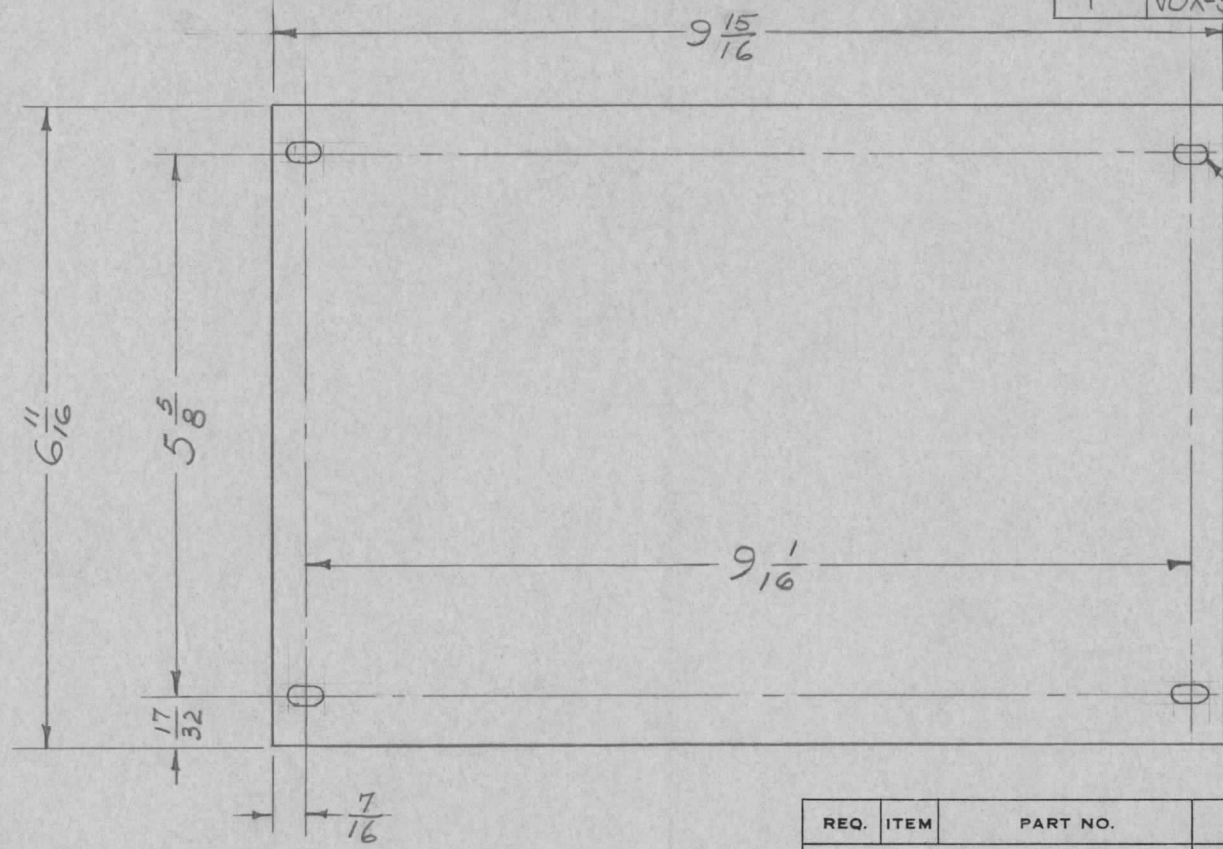
MS-319 C

MAXIMUM ALLOWABLE TOLERANCES HAVE BEEN DETERMINED AND DEVIATIONS WILL BE CAUSE FOR REJECTION. REMOVE ALL BURRS AND SHARP EDGES

DECIMALS	TOLERANCES	FRACTIONS
.X ± .05		± 1/64
.XX ± .01		ANGLES
.XXX ± .005		± 0° 30'

CUT HERE
GUARANTEED
2166

REQ. PER UNIT	USED ON			
	MODEL	PROJECT NO.	ASS'Y. NO.	DATE
1	VOX	101		1-19-55
1	VOX-1 VOX-2	291		1-19-55
1	VOX-3,4,5,6			2-26-62



5/32 x 5/16 SLOTS, 4 REQ.

REQ.	ITEM	PART NO.	DESCRIPTION	SYMBOL
			.051 THK.	
			STOCK SIZE	
		ALUMINUM	—H—	
		MATERIAL	WEIGHT PER PC.	
		52S-H32		
		TYPE & TEMPER		
		—H—		
		HEAT TREAT. SPEC.		
		S-404 IRIDITE IP		
		FINISH & SPEC. NO.		

THE TECHNICAL MATERIEL CORP.
MAMARONECK. NEW YORK
OVEN SUPPORT COVER
BOTTOM

ISSUE	ITEM	CHANGED FROM	DATE	CN. NO.	DRAFTS	CHECKER	ENG. APP.
C	1	S404- IRIDITE WAS SID1 - CAUSTIC DIP	12-7-59	1001	JP		EMN
B	1	Req Per UNIT was 2	2/1/55	2	JAD	WDE	WDE
A	1	7/16 was 3/8 19 15/16 was 9 15/16 SLOTS were 11/64 X 11/32	4/26/55	1	JAD	WDE	WDE

TOLERANCES	SCALE	DRILL, PUNCH, COMMERCIAL STOCK SIZES AND MANUFACTURERS TOLERANCES ARE NOT INCLUDED.
ALL OTHERS DEC. DIM. ± FRAC. DIM. ± 1/64 ANGULAR DIM. ±	HALF SIZE	

DRAWN	ELEC. DES. APP.	MECH. DES. APP.
JAD		WDE
CHECKED	FINAL APPROVAL	
	MS-319	C

IF IT IS FOUND DESIRABLE TO CHANGE ANY TOLERANCE OR OTHER DETAIL SPECIFIED ON THIS DRAWING NOTIFY THE PURCHASER PROMPTLY.

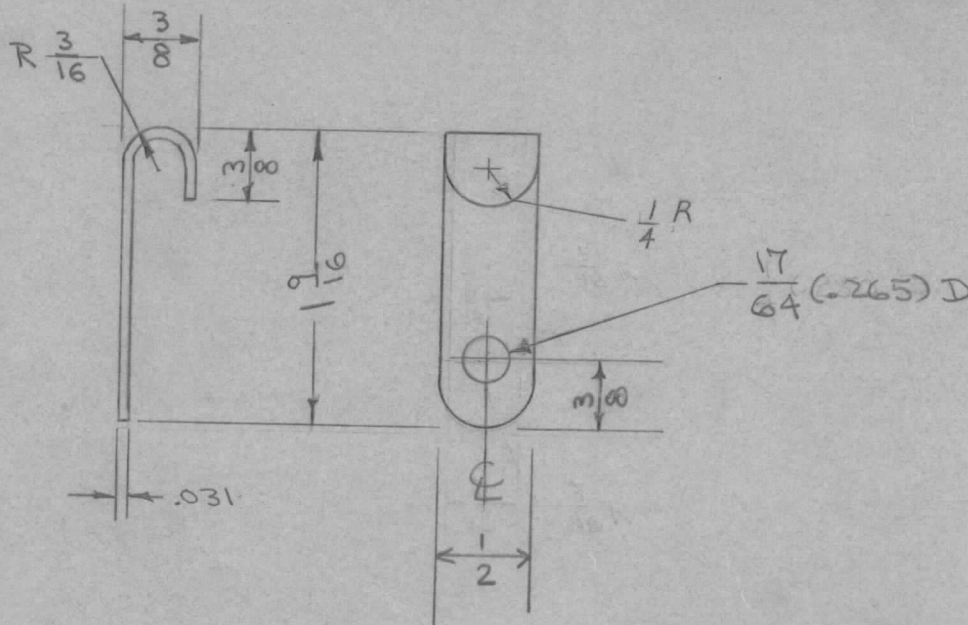
MS-347 B

MAXIMUM ALLOWABLE TOLERANCES HAVE BEEN DETERMINED AND DEVIATIONS WILL BE CAUSE FOR REJECTION. REMOVE ALL BURRS AND SHARP EDGES

RELEASED

USED ON

MODEL	PROJECT NO.	ASS'Y. NO.	DATE
DAC-1	180	A-455	5-1-53
A-1125			5-1-58



UNLESS OTHERWISE SPECIFIED
DIMENSIONS ARE IN INCHES AND INCLUDE
CHEMICALLY APPLIED OR PLATED FINISHES

DECIMALS	FRACTIONS
.X ± .05	± 1/64
.XX ± .01	ANGLES
.XXX ± .005	± 0° 30'

TOLERANCES

CUT HERE
GUARANTEED
2-66

REQ.	ITEM	PART NO.	DESCRIPTION	SYMBOL
		.031	THE TECHNICAL MATERIEL CORP.	
		STOCK SIZE	MAMARONECK, NEW YORK	
		BRASS	SERVICING, HOOK	
		MATERIAL		
		WEIGHT PER PC.		
		TYPE & TEMPER		
		HEAT TREAT. SPEC.		
		5-105 CADMIUM PLATE		
		FINISH & SPEC. NO.		
			DRAWN	ELEC. DES. APP.
			CHECKED	MECH. DES. APP.
			FINAL APPROVAL	
			MS-347 B	

ISSUE	ITEM	CHANGED FROM	DATE	CN. NO.	DRAFTS	CHECKER	ENG. APP.
B	1	17/64 WAS 1/4"	2-28-53	2			
A	1	1/2 HOLE WAS 1/8	7-20-53	1	F.M.		

TOLERANCES		SCALE
ALL OTHERS	DEC. DIM. ± FRAC. DIM. ± ANGULAR DIM. ±	#
DRILL, PUNCH, COMMERCIAL STOCK SIZES AND MANUFACTURERS TOLERANCES ARE NOT INCLUDED.		

CUT HERE
GUARANTEED
2-66

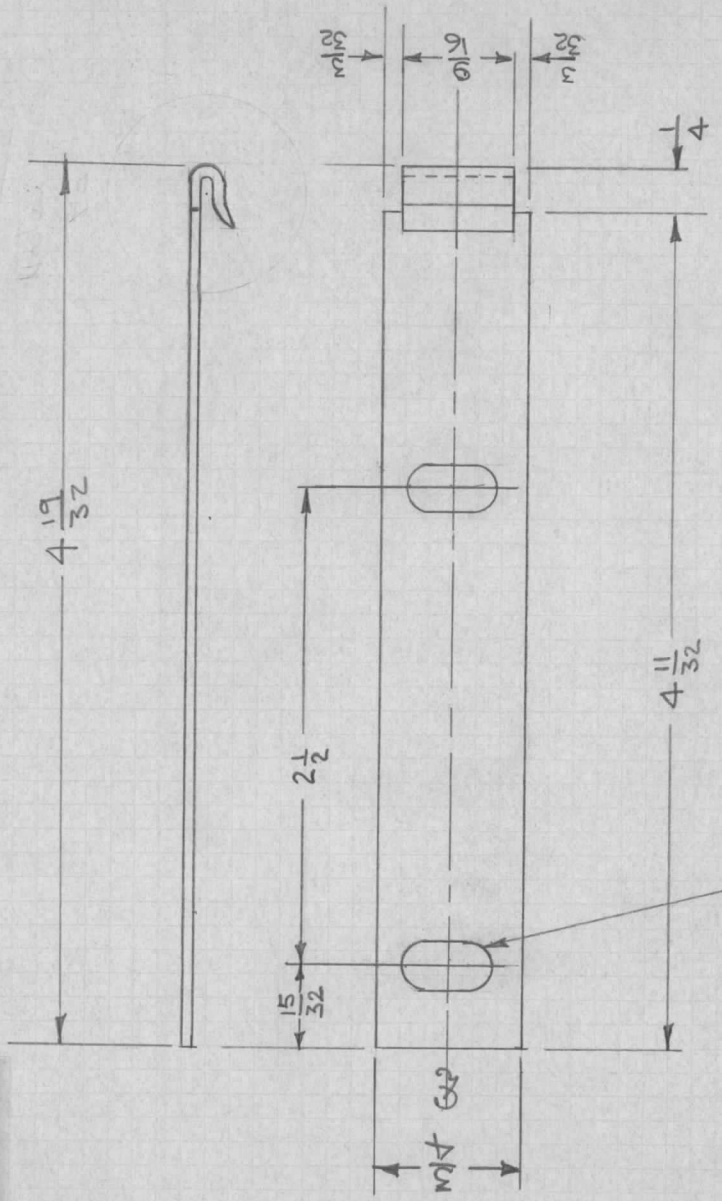
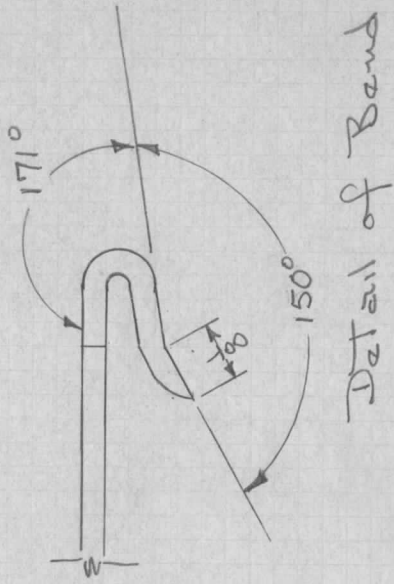
UNLESS OTHERWISE SPECIFIED
DIMENSIONS ARE IN INCHES AND INCLUDE
CHEMICALLY APPLIED OR PLATED FINISHES

DECIMALS
FRACTIONS
ANGLES

TOLERANCES

.X ± .05
.XX ± .01
.XXX ± .005

Note:
Bend As Per Sample



1/4 x 1/16 slotted holes
2 Required

Blank Size 3/4 x 4 29/32

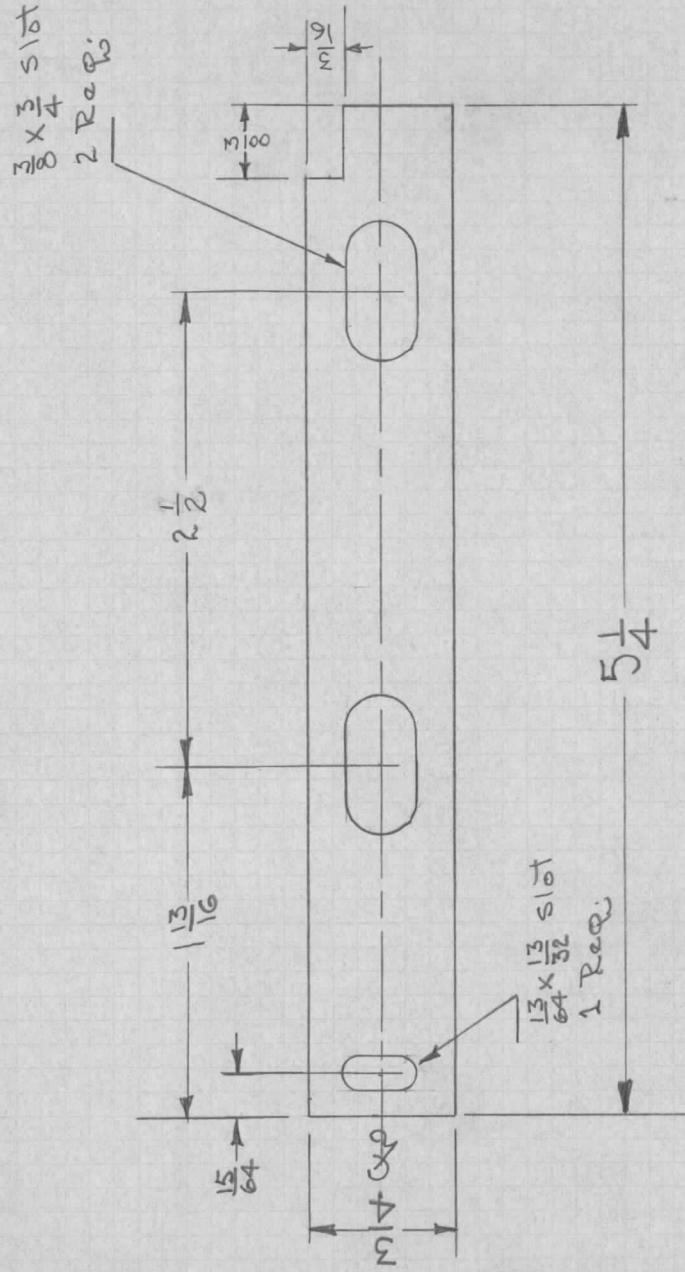
SUPERSEDES AMS194

Material: .18 Ga. Cold Rolled Steel		Finish: Cadmium Plate		Rep. 2 Per Unit	
DATE	9-4-51	BOTTOM CATCH TRIM STRIP		THE TECHNICAL MATERIEL CORPORATION	
DRN.	<i>[Signature]</i>	DDR-2 BACK		MAMARONECK, NEW YORK	
CHKD.	<i>[Signature]</i>			SHEET OF	
APPD.	<i>[Signature]</i>			NO. MS-349	

MS-349

CUT HERE
GUARANTEED
2-66

UNLESS OTHERWISE SPECIFIED	
DIMENSIONS ARE IN INCHES AND INCLUDE	
CHEMICALLY APPLIED OR PLATED FINISHES	
DECIMALS	FRACTIONS
.X ± .05	± 1/64
.XX ± .01	ANGLES
.XXX ± .005	± 0° 30'



Note:

Round off All
Sharp Edges.

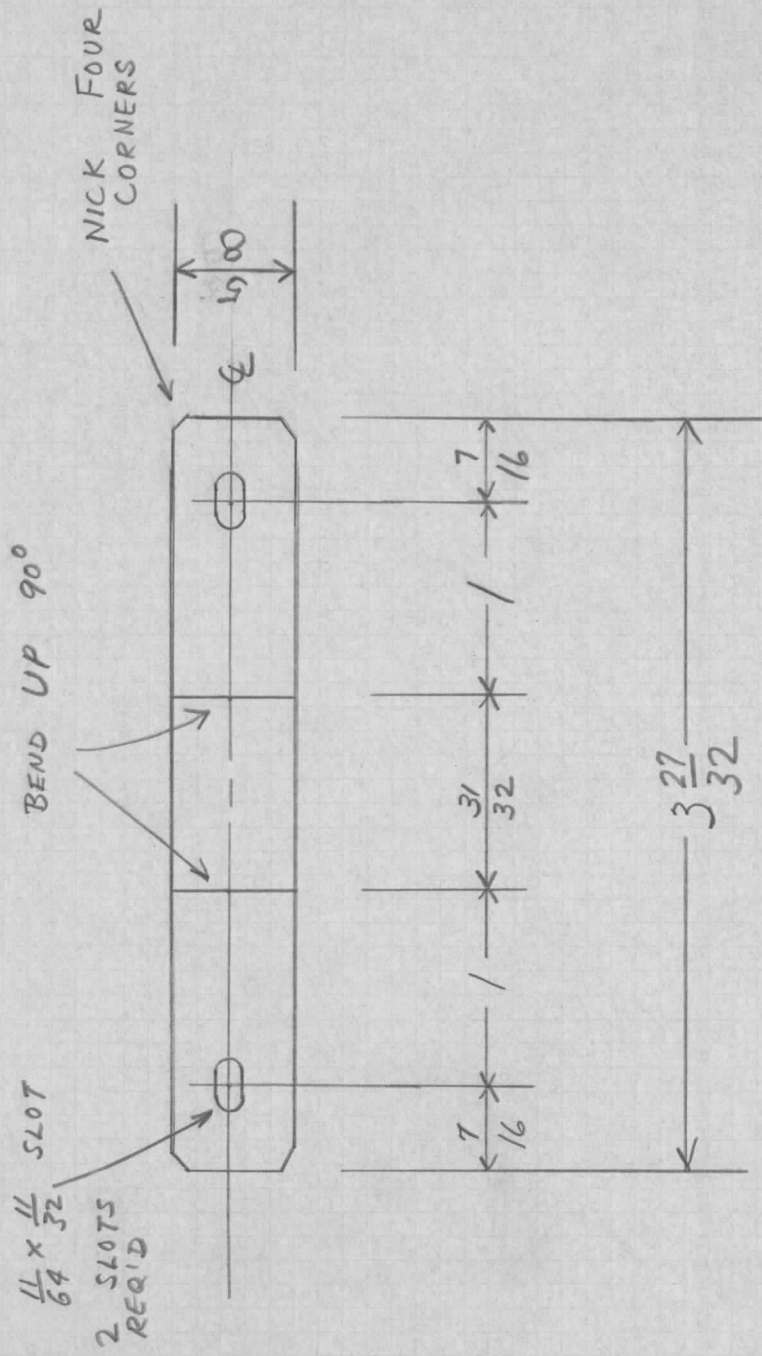
Blank Size $\frac{3}{4} \times 5\frac{1}{4}$

SUPERSEDES AMS195

Material: .081 Aluminum 525 1/4H	Finish: Alkali Etch & Lacquer	Req. 2 Per Unit
DATE 9-4-51	TOP CATCH	THE TECHNICAL MATERIEL
DRN. <i>HRD</i>	TRIM STRIP	CORPORATION
CHKD. <i>ojs</i>	DDR-2-RACK	MAMARONECK, NEW YORK
APPD. <i>HRD</i>		SHEET OF NO. MS-350

MS-350

MS-351



MAT SIZE: $\frac{5}{8} \times 3\frac{27}{32}$ "

USE: 18 GA COLD ROLL STEEL

FINISH: GRAY PAINT

MAKE: 5 PER UNIT

UNLESS OTHERWISE SPECIFIED DIMENSIONS ARE IN INCHES AND INCLUDE CHEMICALLY APPLIED OR PLATED FINISHES	
DECIMALS	FRACTIONS
X ± .05	± 1/64
.XX ± .01	ANGLES
.XXX ± .005	± 0° 30'

CUT HERE
2-66
GUARANTEED

SUPERSEDES AMS187

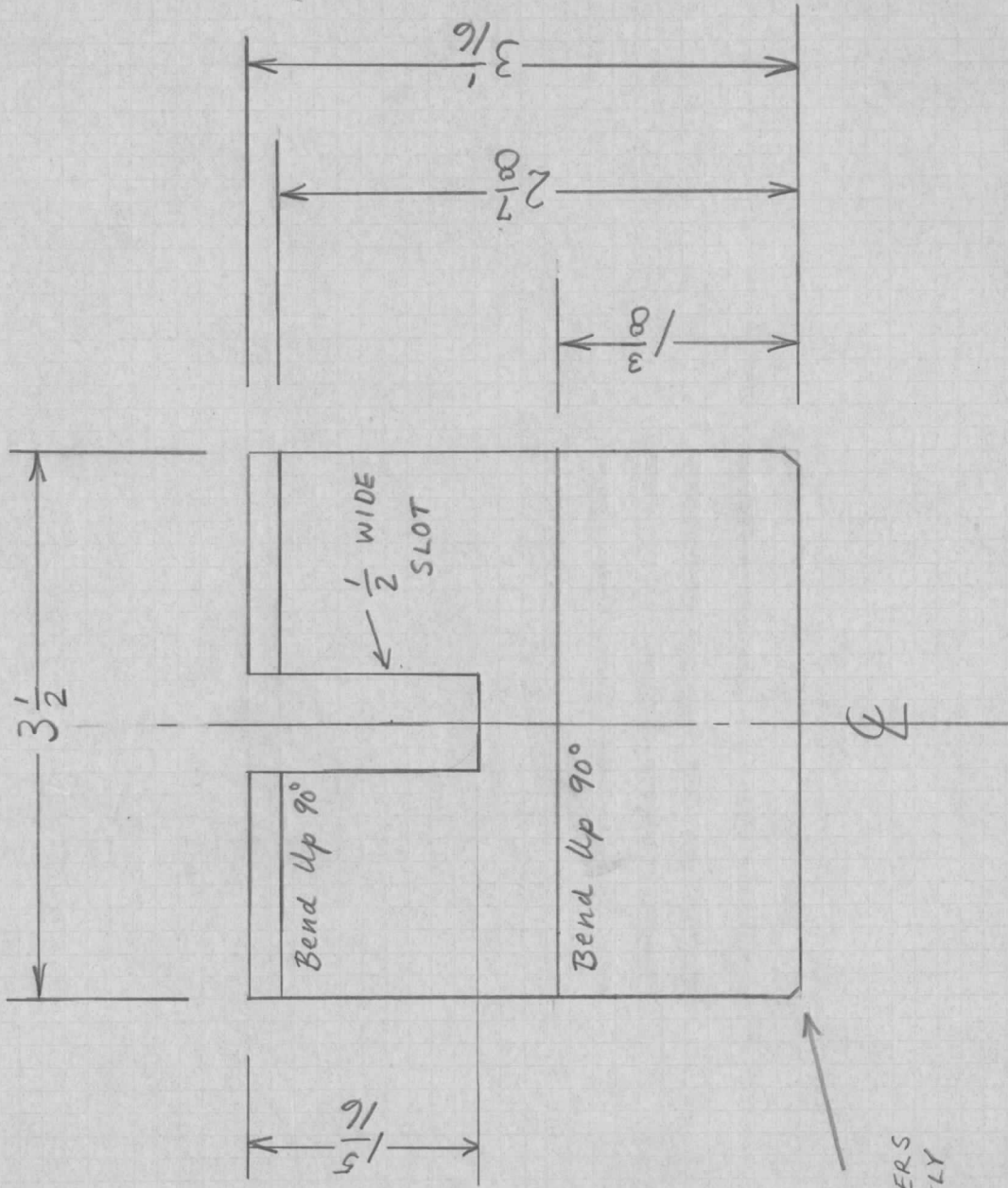
DATE 8/14/51
 DRN. P.B.
 CHKD.
 APPD. *[Signature]*

A.I.C. POWER STRIP CLAMP
 DDR-2 RACK

THE TECHNICAL MATERIEL
 CORPORATION
 MAMARONECK, NEW YORK

SHEET OF NO. MS-351

MS-352



NICK
CORNERS
SLIGHTLY

041

USE .051 52 S $\frac{1}{4}$ HARD ALUM
ONE PER UNIT

FINISH: ALKALI ETCH ; ENAMEL LACQUER AFTER
SILK SCREENING

UNLESS OTHERWISE SPECIFIED DIMENSIONS ARE IN INCHES AND INCLUDE CHEMICALLY APPLIED OR PLATED FINISHES	
DECIMALS	FRACTIONS
.X \pm .05	\pm 1/64
.XX \pm .01	ANGLES
.XXX \pm .005	\pm 0° 30'
TOLERANCES	

CUT HERE
2-66
GUARANTEED

DATE 9/28/51

DRN. P.B.

CHKD. OMB

APPD. POMB

MEDALLION BASE PLATE

DDR-2 RACK

THE TECHNICAL MATERIEL
CORPORATION

MAMARONECK, NEW YORK

SHEET

OF

NO. MS-352

IF IT IS FOUND DESIRABLE TO CHANGE ANY TOLERANCE OR OTHER DETAIL SPECIFIED ON THIS DRAWING NOTIFY THE PURCHASER PROMPTLY.

MAXIMUM ALLOWABLE TOLERANCES HAVE BEEN DETERMINED AND DEVIATIONS WILL BE CAUSE FOR REJECTION. REMOVE ALL BURRS AND SHARP EDGES

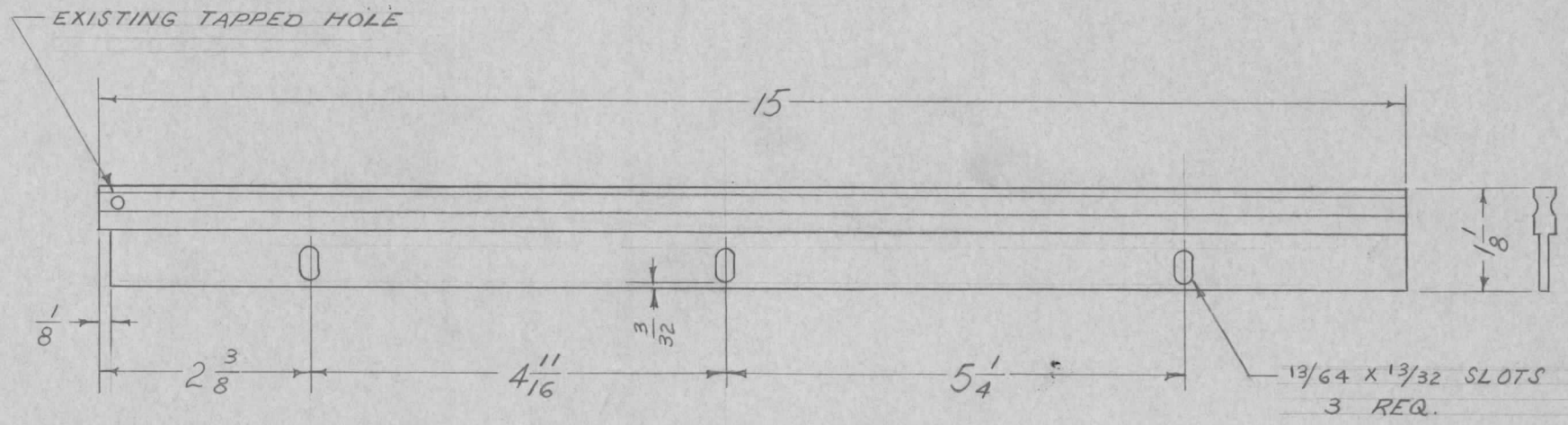
UNLESS OTHERWISE SPECIFIED DIMENSIONS ARE IN INCHES AND INCLUDE CHEMICALLY APPLIED OR PLATED FINISHES

DECIMALS	FRACTIONS
X ± .05	± 1/64
.XX ± .01	ANGLES
.XXX ± .005	± 0° 30'

CUT HERE
QUANTIFIED
2-68

MS-355 A

REQ. PER UNIT	USED ON			
	MODEL	PROJECT NO.	ASS'Y. NO.	DATE
2	DDR-2			4-13-55



REF. GRANT ALUMINUM TRACK C-15-11

REQ.	ITEM	PART NO.	DESCRIPTION	SYMBOL
	1 1/8 X 15 TRACK		THE TECHNICAL MATERIEL CORP.	
	STOCK SIZE		MAMARONECK. NEW YORK	
	ALUMINUM	#	TRACK CABINET DRAWER	
	MATERIAL	WEIGHT PER PC.	DDR-2 RACK	
	TYPE & TEMPER		P.B. 4-13-55	
			DRAWN	ELEC. DES. APP. MECH. DES. APP.
	HEAT TREAT. SPEC.		JADe	SFM
			CHECKED	FINAL APPROVAL
	FINISH & SPEC. NO.			MS-355 A

A	1	REDRAWN - REVISED	4-13-55	1	PB	JADe	
ISSUE	ITEM	CHANGED FROM	DATE	CN. NO.	DRAFTS	CHECKER	ENG. APP.

TOLERANCES		SCALE
ALL OTHERS	DEC. DIM. ± FRAC. DIM. ± ANGULAR DIM. ±	DRILL, PUNCH, COMMERCIAL STOCK SIZES AND MANUFACTURERS TOLERANCES ARE NOT INCLUDED.

M S - 356

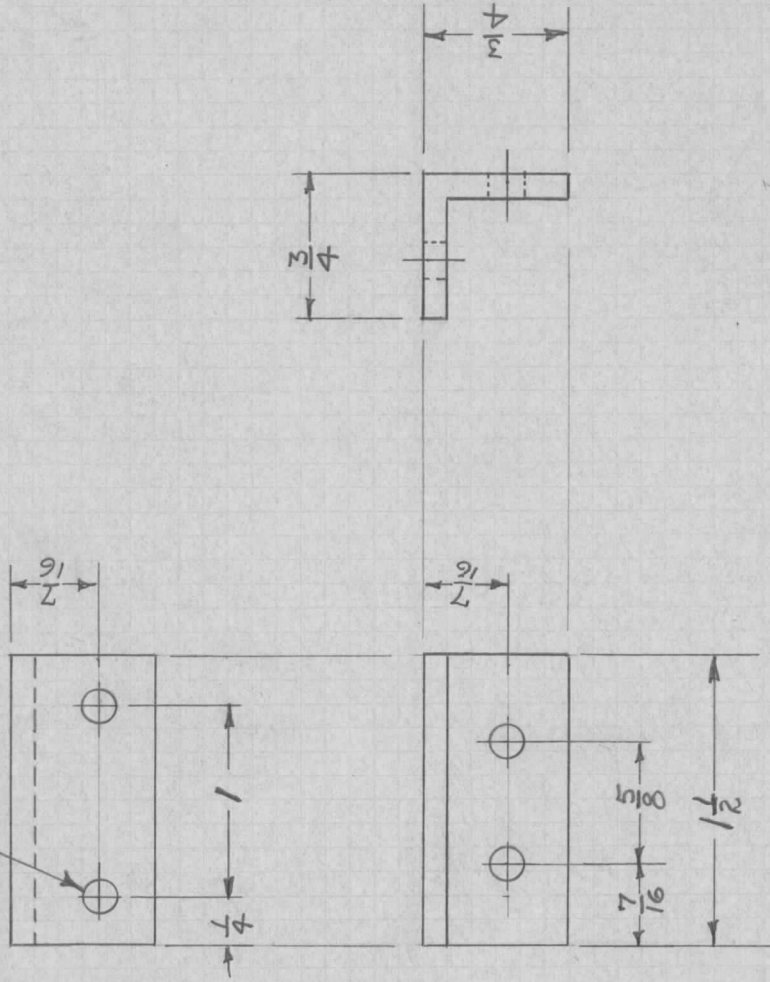
UNLESS OTHERWISE SPECIFIED
 DIMENSIONS ARE IN INCHES AND INCLUDE
 CHEMICALLY APPLIED OR PLATED FINISHES

FRACTIONS
 X ± .05
 .XX ± .01
 .XXX ± .005

TOLERANCES

± 1/64
 ANGLES
 ± 0° 30'

13/64 D
4 Holes



Blank Length 1 1/2

WAS AMS 206

Material: 1/8 x 3/4 x 3/4 Aluminum Angle Finish: R.C.A. RACK GRAY - Reg. 2 Per Unit	
DATE 9-10-51	THE TECHNICAL MATERIEL CORPORATION
DRN. <i>APD</i>	MAMARONECK, NEW YORK
CHKD. <i>APD</i>	SHEET OF NO. MS-356
APPD. <i>APD</i>	TRACK SUPPORT BRKT.
	DDR-2 RACK

IF IT IS FOUND DESIRABLE TO CHANGE ANY TOLERANCE OR OTHER DETAIL SPECIFIED ON THIS DRAWING NOTIFY THE PURCHASER PROMPTLY.

MAXIMUM ALLOWABLE TOLERANCES HAVE BEEN DETERMINED AND DEVIATIONS WILL BE CAUSE FOR REJECTION. REMOVE ALL BURRS AND SHARP EDGES

UNLESS OTHERWISE SPECIFIED DIMENSIONS ARE IN INCHES AND INCLUDE CHEMICALLY APPLIED OR PLATED FINISHES

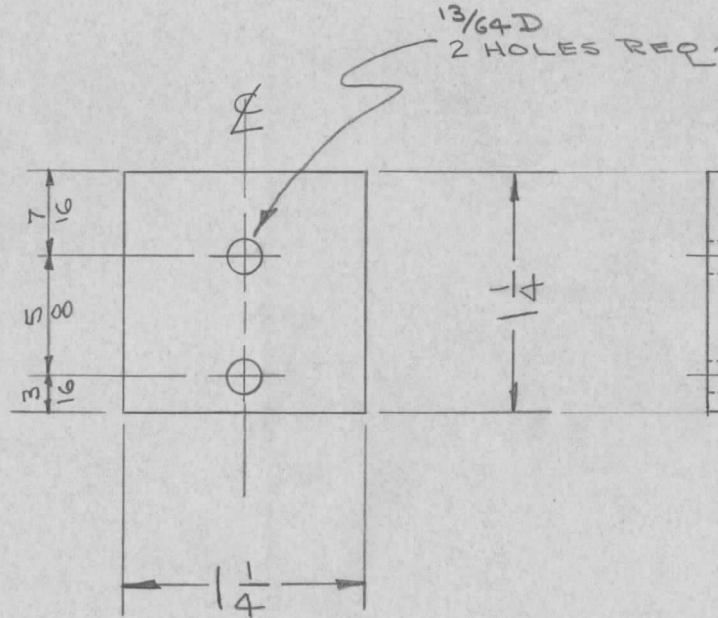
DECIMALS .X ± .05 .XX ± .01 .XXX ± .005	TOLERANCES	FRACTIONS ± 1/64 ANGLES ± 0° 30'
--	------------	---

CUT HERE
GUARANTEED
BY 12-66
GARY
GARY

MS-357.1

USED ON

MODEL	PROJECT NO.	ASS'Y. NO.	DATE
2	DDR-2		9-10-51

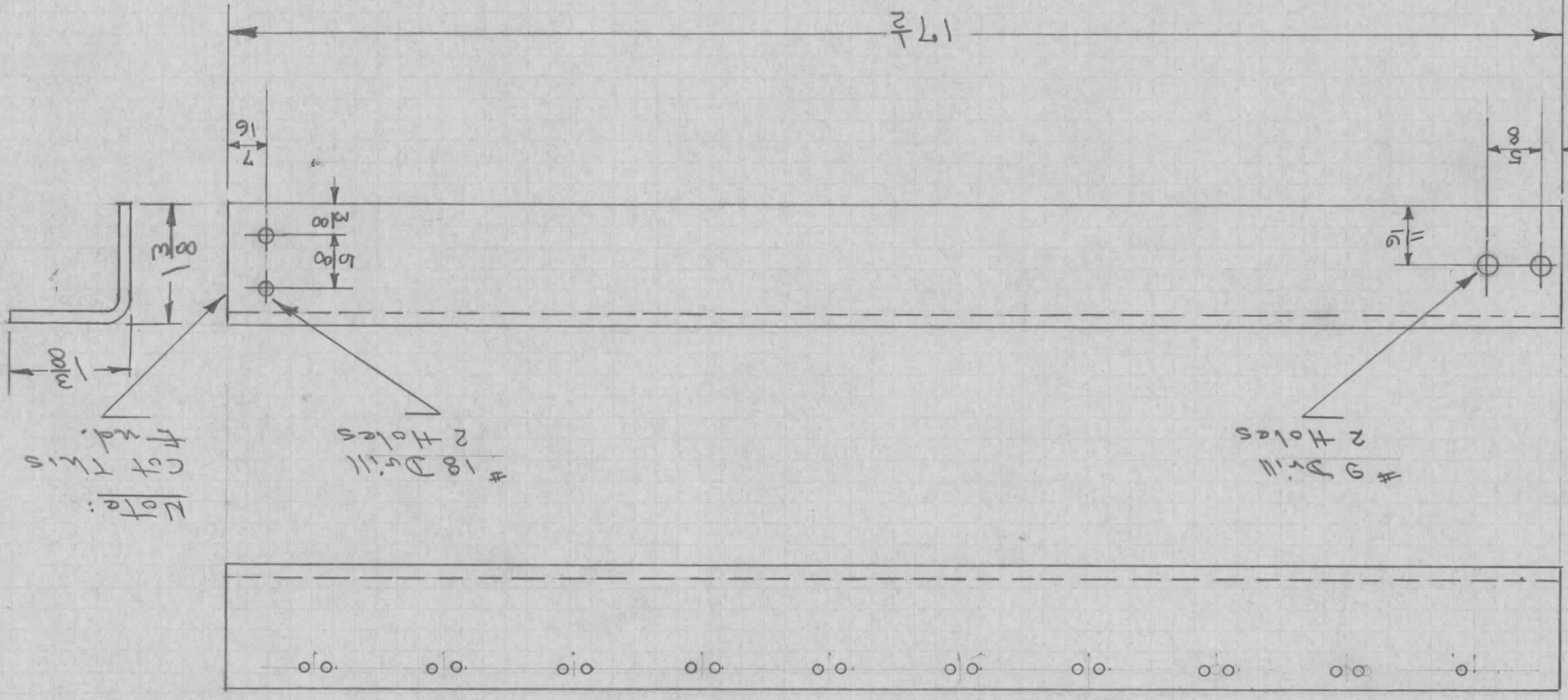


REQ.	ITEM	PART NO.	DESCRIPTION	SYMBOL
		.081	THE TECHNICAL MATERIEL CORP. MAMARONECK, NEW YORK	
		STOCK SIZE		
		ALUMINUM	SHIM, TRACK SUPPORT CABINET DRAWER, DDR-2	
		MATERIAL WEIGHT PER PC.		
		24ST		
		TYPE & TEMPER		
			DRAWN	ELEC. DES. APP. MECH. DES. APP.
		HEAT TREAT. SPEC.	CHECKED	FINAL APPROVAL
		RCA-RACK GRAY		MS-357.1
		FINISH & SPEC. NO.		

ISSUE	ITEM	CHANGED FROM	DATE	CN. NO.	DRAFTS	CHECKER	ENG. APP.
TOLERANCES			SCALE				
ALL OTHERS	DEC. DIM. ± FRAC. DIM. ± ANGULAR DIM. ±	DRILL, PUNCH, COMMERCIAL STOCK SIZES AND MANUFACTURERS TOLERANCES ARE NOT INCLUDED.					

MS-357-2

UNLESS OTHERWISE SPECIFIED	
DIMENSIONS ARE IN INCHES AND INCLUDE	
CHEMICALLY APPLIED OR PLATED FINISHES	
DECIMALS	FRACTIONS
X ± .05	± 1/64
.XX ± .01	ANGLES
.XXX ± .005	± 0° 30'



SYM	DESCRIPTION	DATE	CK	APP
A	1 3/8 Dimension Added	3/15/54	APP	APP

Note:
Existing Angle To Be Cut And Four Holes
Drilled As Shown.

WAS AMS210

Material: 11 Ga. Steel Angle Supplied With 1/4" RACK Required: 1 Per Unit

DATE	9-10-51
DRN.	ADD
CHKD.	
APPD.	APP

RIGHT TRACK SUPPORT
CABINET DRAWER

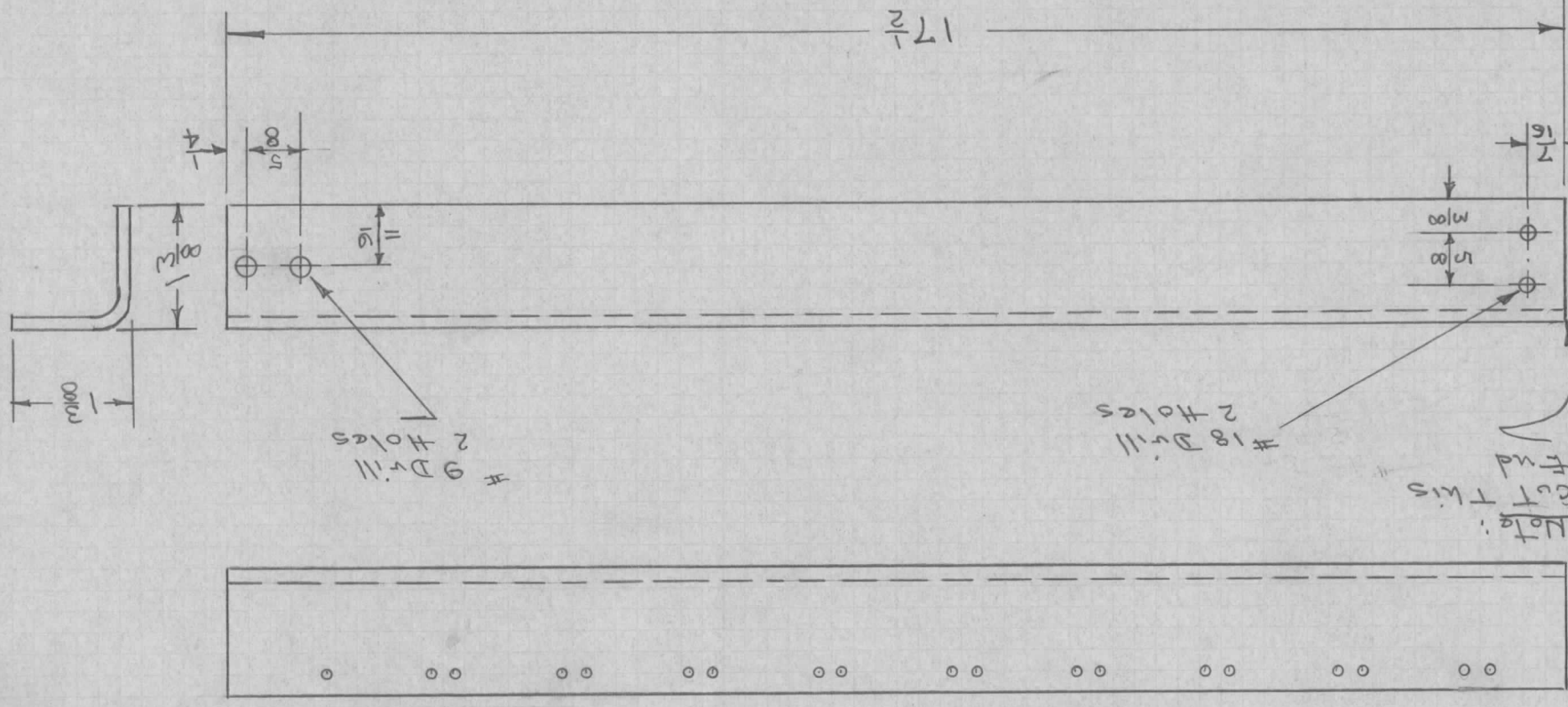
DDR-2 RACK

THE TECHNICAL MATERIEL
CORPORATION
MAMARONECK, NEW YORK

SHEET	OF	NO. MS-357.2
		A

CUT HERE
GUARANTEED
2-66

UNLESS OTHERWISE SPECIFIED	
DIMENSIONS ARE IN INCHES AND INCLUDE	
CHEMICALLY APPLIED OR PLATED FINISHES	
DECIMALS	.X ± .05
FRACTIONS	± 1/64
ANGLES	± .01
	.XXX ± .005



Material: 11G2. Steel Angle Supplied With Rack Required: 1 Per Unit

DATE 9-10-51
 DRN. JADe
 CHKD.
 APPD. PMS

LEFT TRACK SUPPORT
 CABINET DRAWER

DDR-2 TRACK

THE TECHNICAL MATERIEL
 CORPORATION
 MAMARONECK, NEW YORK

SHEET OF NO. MS-358A

SYM DESCRIPTION	A 1/8 Dim. Added
DATE	3/15/54
CK	EDB
APP	

WAS AMS211

Note:
 Existing Angle To Be Cut And Four Holes
 Drilled As Shown.

ms-358

IF IT IS FOUND DESIRABLE TO CHANGE ANY TOLERANCE OR OTHER DETAIL SPECIFIED ON THIS DRAWING NOTIFY THE PURCHASER PROMPTLY.

UNLESS OTHERWISE SPECIFIED DIMENSIONS ARE IN INCHES AND INCLUDE CHEMICALLY APPLIED OR PLATED FINISHES

MS-360 C

MAXIMUM ALLOWABLE TOLERANCES HAVE BEEN DETERMINED AND DEVIATIONS WILL BE CAUSE FOR REJECTION. REMOVE ALL BURRS AND SHARP EDGES

DECIMALS	FRACTIONS	TOLERANCES
.X ± .05	± 1/64	
.XX ± .01	ANGLES	
.XXX ± .005	± 0° 30'	

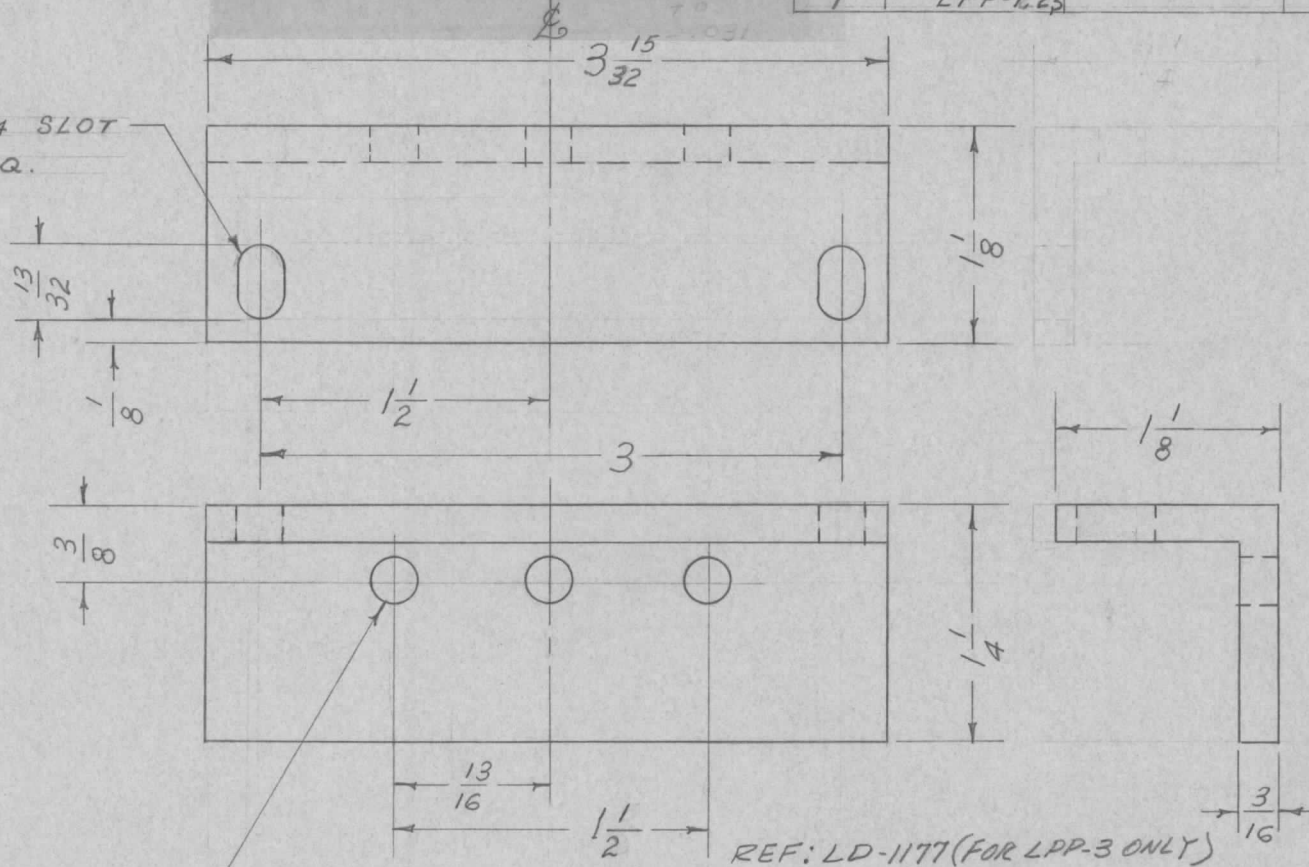
CUT HERE
UNWARRANTED
2-66

REQ. PER UNIT

USED ON

MODEL	PROJECT NO.	ASS'Y. NO.	DATE
LPP-1,2,3			5-4-55

13/32 x 1/4 SLOT
2 REQ.



REQ. ITEM	PART NO.	DESCRIPTION	SYMBOL
	3/16 x 1/4 x 1/4	THE TECHNICAL MATERIEL CORP.	
	STOCK SIZE	MAMARONECK, NEW YORK	
	ALUMINUM #	LEFT SUPPORT	
	MATERIAL WEIGHT PER PC.	LPP-1,2,3	
	63 S - T5	P.B. 5-5-55	
	TYPE & TEMPER	DRAWN	ELEC. DES. APP.
	#	MECH. DES. APP.	
	HEAT TREAT. SPEC.	CHECKED	FINAL APPROVAL
	S-115 SMOOTH GRAY ENAMEL		
	FINISH & SPEC. NO.		

ISSUE	ITEM	CHANGED FROM	DATE	CN. NO.	DRAFTS	CHECKER	ENG. APP.
C	1	REF NOTE ADDED	12/8/63	10594			
B	2	1/8 WAS 1/4	5-5-55	2	P.B.	FA	
	1	REDRAWN					

TOLERANCES	SCALE	DRILL, PUNCH, COMMERCIAL STOCK SIZES AND MANUFACTURERS TOLERANCES ARE NOT INCLUDED.
ALL OTHERS	DEC. DIM. ± FRAC. DIM. ± 1/64 ANGULAR DIM. ±	

MS-360 C

IF IT IS FOUND DESIRABLE TO CHANGE ANY TOLERANCE OR OTHER DETAIL SPECIFIED ON THIS DRAWING NOTIFY THE PURCHASER PROMPTLY.

UNLESS OTHERWISE SPECIFIED DIMENSIONS ARE IN INCHES AND INCLUDE CHEMICALLY APPLIED OR PLATED FINISHES

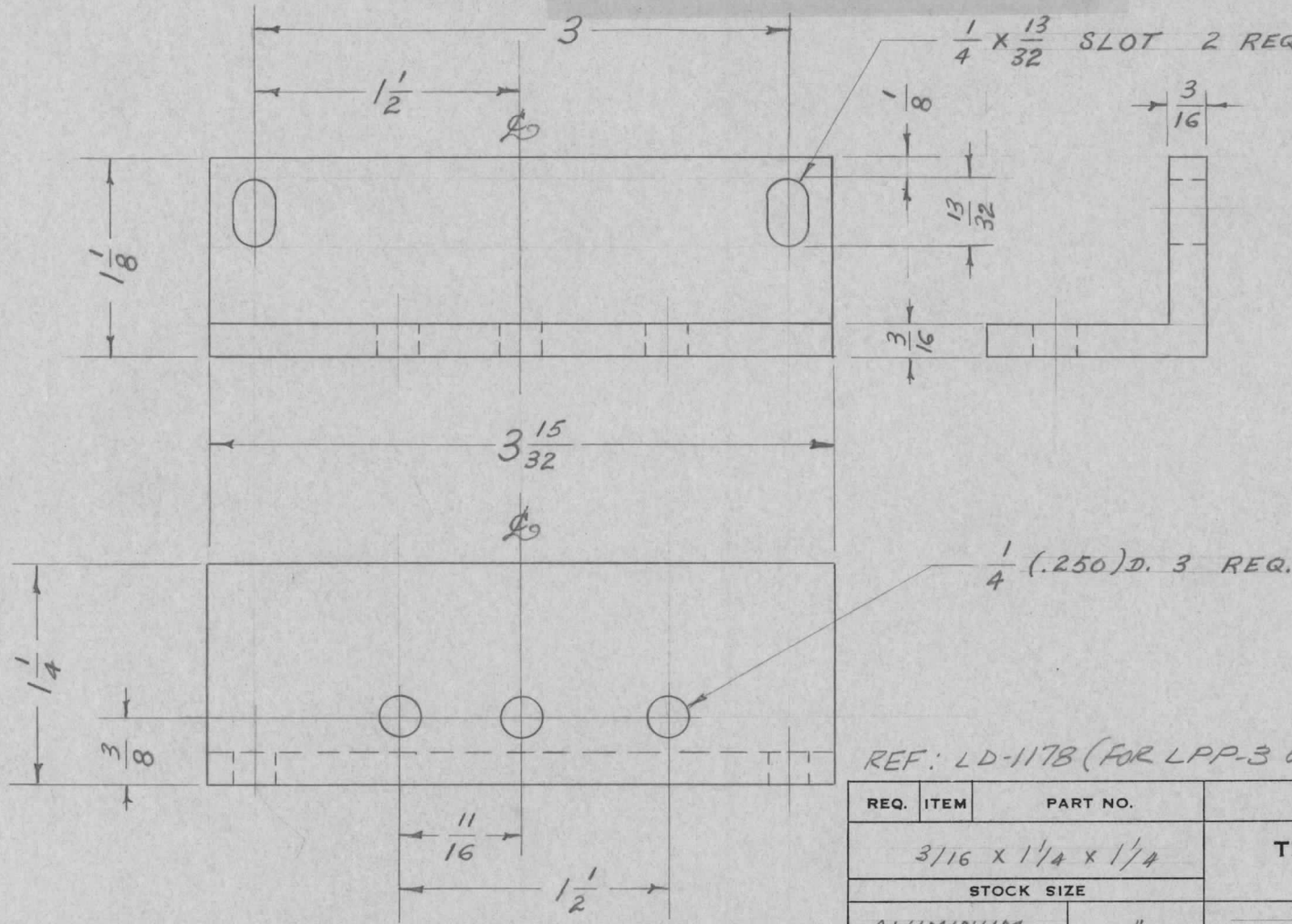
MS-361 C

MAXIMUM ALLOWABLE TOLERANCES HAVE BEEN DETERMINED AND DEVIATIONS WILL BE CAUSE FOR REJECTION. REMOVE ALL BURRS AND SHARP EDGES

DECIMALS	FRACTIONS	TOLERANCES
.X ± .05	± 1/64	
.XX ± .01	ANGLES	
.XXX ± .005	± 0° 30'	

CUT HERE
GUARANTEED
2-86

REQ. PER UNIT	USED ON			
	MODEL	PROJECT NO.	ASS'Y. NO.	DATE
1	LPP-1,2,3			5-12-55



REF: LD-117B (FOR LPP-3 ONLY)

REQ.	ITEM	PART NO.	DESCRIPTION	SYMBOL
		3/16 x 1/4 x 1/4	THE TECHNICAL MATERIEL CORP.	
		STOCK SIZE	MAMARONECK. NEW YORK	
	ALUMINUM	11	RIGHT SUPPORT	
	MATERIAL	WEIGHT PER PC.	LPP-1, 2, 3	
		63 S- T5		
		TYPE & TEMPER	PB 5-12-55	
		HEAT TREAT. SPEC.	DRAWN	ELEC. DES. APP. MECH. DES. APP.
		FINISH & SPEC. NO.	CHECKED	FINAL APPROVAL
		S-115 SMOOTH GRAY ENAMEL		MS-361 C

ISSUE	ITEM	CHANGED FROM	DATE	CN. NO.	DRAFTS	CHECKER	ENG. APP.
C	1	REF NOTE ADDED	12/16/53	10594			
B	2	REDRAWN					
B	1	1/8 WAS 1" 1/4 WAS 1"	5/12/53	2			

TOLERANCES	SCALE
ALL OTHERS DEC. DIM. ± FRAC. DIM. ± Y64 ANGULAR DIM. ±	DRILL, PUNCH, COMMERCIAL STOCK SIZES AND MANUFACTURERS TOLERANCES ARE NOT INCLUDED.

IF IT IS FOUND DESIRABLE TO CHANGE ANY TOLERANCE OR OTHER DETAIL SPECIFIED ON THIS DRAWING NOTIFY THE PURCHASER PROMPTLY.

UNLESS OTHERWISE SPECIFIED DIMENSIONS ARE IN INCHES AND INCLUDE CHEMICALLY APPLIED OR PLATED FINISHES

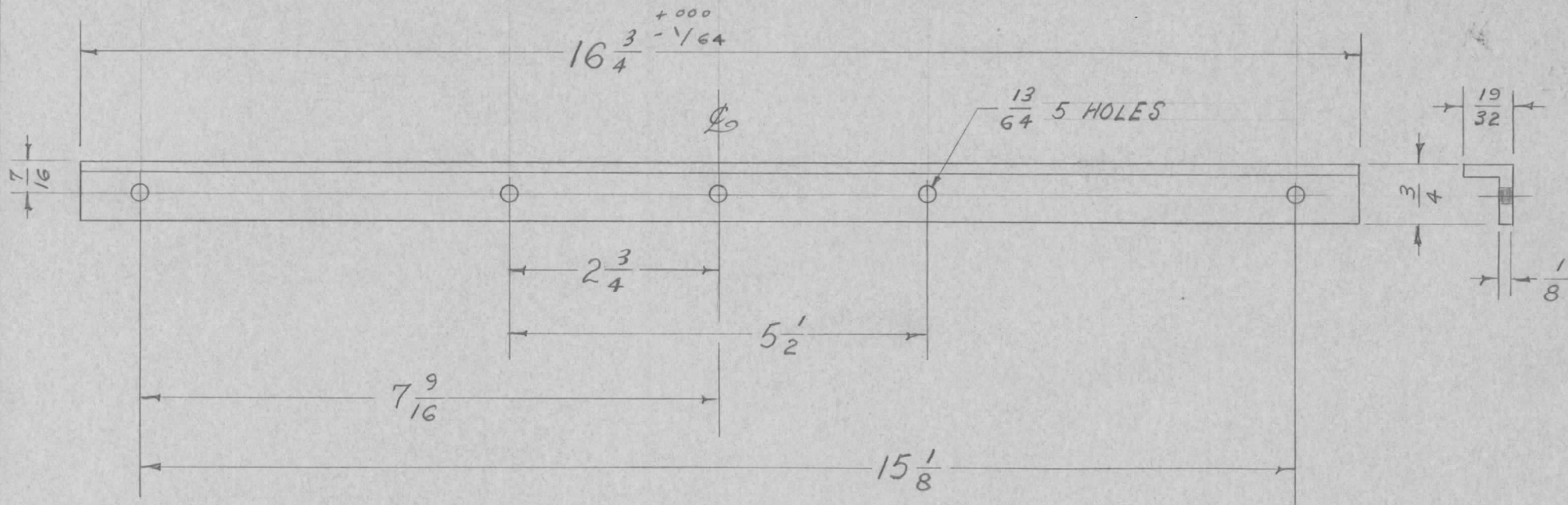
MS-362

MAXIMUM ALLOWABLE TOLERANCES HAVE BEEN DETERMINED AND DEVIATIONS WILL BE CAUSE FOR REJECTION. REMOVE ALL BURRS AND SHARP EDGES

DECIMALS	TOLERANCES	FRACTIONS
.X ± .05		± 1/64
.XX ± .01		ANGLES ± 0° 30'
.XXX ± .005		

CUT HERE GUARANTEED 2.46

REQ. PER UNIT	USED ON			
	MODEL	PROJECT NO.	ASS'Y. NO.	DATE
1	LPP-1-2,3			5-5-55



REQ.	ITEM	PART NO.	DESCRIPTION	SYMBOL
		1/8 X 5/8 X 3/4	THE TECHNICAL MATERIEL CORP.	
		STOCK SIZE	MAMARONECK, NEW YORK	
		ALUMINUM	TOP SUPPORT	
		MATERIAL	LPP-1-2-3	
		WEIGHT PER PC.		
		635-T5		
		TYPE & TEMPER	PB 5-5-55	WDC
			DRAWN	ELEC. DES. APP.
			MECH. DES. APP.	
			HEAT TREAT. SPEC.	
		5-115 SMOOTH GRAY ENAMEL	CHECKED	FINAL APPROVAL
		FINISH & SPEC. NO.		MS-362

#	ISSUE	ITEM	CHANGED FROM	DATE	CN. NO.	DRAFTS	CHECKER	ENG. APP.
			REDRAWN	5-5-55		PB	JADE	WDC

TOLERANCES		SCALE
ALL OTHERS	DEC. DIM. ± FRAC. DIM. ± 1/64 ANGULAR DIM. ±	DRILL, PUNCH, COMMERCIAL STOCK SIZES AND MANUFACTURERS TOLERANCES ARE NOT INCLUDED.

IF IT IS FOUND DESIRABLE TO CHANGE ANY TOLERANCE OR OTHER DETAIL SPECIFIED ON THIS DRAWING NOTIFY THE PURCHASER PROMPTLY.

UNLESS OTHERWISE SPECIFIED DIMENSIONS ARE IN INCHES AND INCLUDE CHEMICALLY APPLIED OR PLATED FINISHES

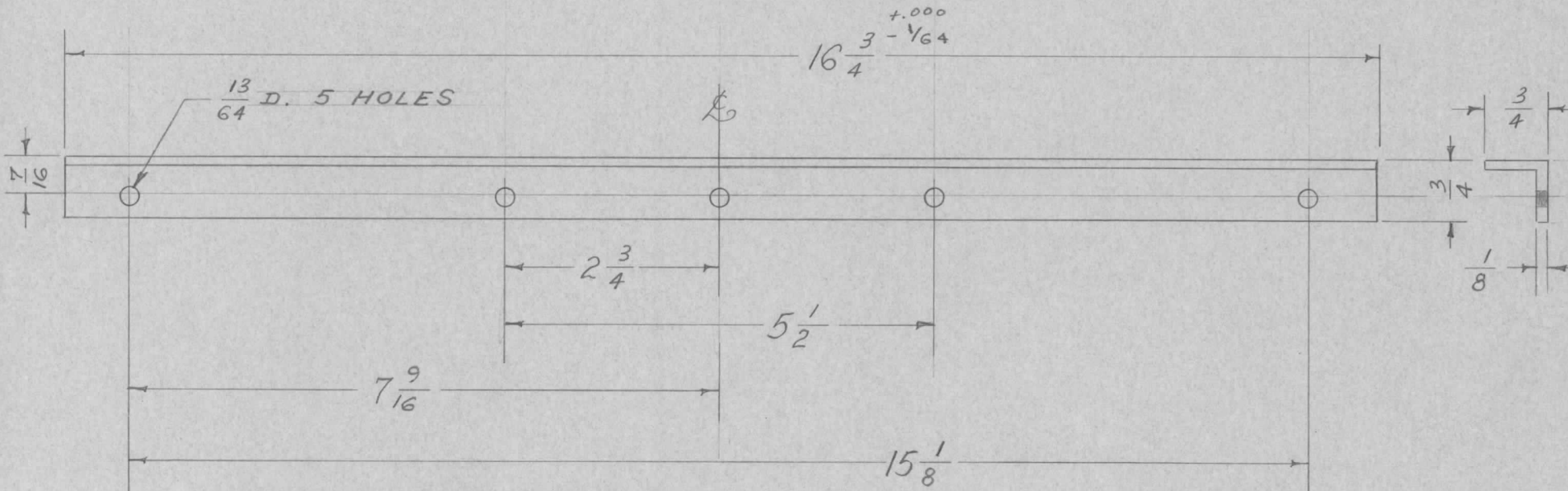
MS-363

MAXIMUM ALLOWABLE TOLERANCES HAVE BEEN DETERMINED AND DEVIATIONS WILL BE CAUSE FOR REJECTION. REMOVE ALL BURRS AND SHARP EDGES

DECIMALS	TOLERANCES	FRACTIONS
.X ± .05		± 1/64
.XX ± .01		ANGLES ± 0° 30'
.XXX ± .005		

CUT HERE GUARANTEED 2-66

REQ. PER UNIT	USED ON			
	MODEL	PROJECT NO.	ASS'Y. NO.	DATE
1	LPP-1-23			5-5-55



REQ.	ITEM	PART NO.	DESCRIPTION	SYMBOL
		1/8 x 3/4 / 3/4	THE TECHNICAL MATERIEL CORP.	
		STOCK SIZE	MAMARONECK, NEW YORK	
		ALUMINUM	BOTTOM SUPPORT	
		MATERIAL	LPP-1-2-3	
		WEIGHT PER PC.		
		63S-T5		
		TYPE & TEMPER	PB 5-5-55	
			DRAWN	ELEC. DES. APP. MECH. DES. APP.
			HEAT TREAT. SPEC.	
		S-115 SMOOTH GRAY ENAMEL	CHECKED	FINAL APPROVAL
		FINISH & SPEC. NO.		MS-363

REDRAWN	NO CHANGE	5-5-55		PB	JAB	WDC	
ISSUE	ITEM	CHANGED FROM	DATE	CN. NO.	DRAFTS	CHECKER	ENG. APP.

TOLERANCES	SCALE
ALL OTHERS DEC. DIM. ± FRAC. DIM. ± 1/64 ANGULAR DIM. ±	DRILL, PUNCH, COMMERCIAL STOCK SIZES AND MANUFACTURERS TOLERANCES ARE NOT INCLUDED.

IF IT IS FOUND DESIRABLE TO CHANGE ANY TOLERANCE OR OTHER DETAIL SPECIFIED ON THIS DRAWING NOTIFY THE PURCHASER PROMPTLY.

UNLESS OTHERWISE SPECIFIED DIMENSIONS ARE IN INCHES AND INCLUDE CHEMICALLY APPLIED OR PLATED FINISHES

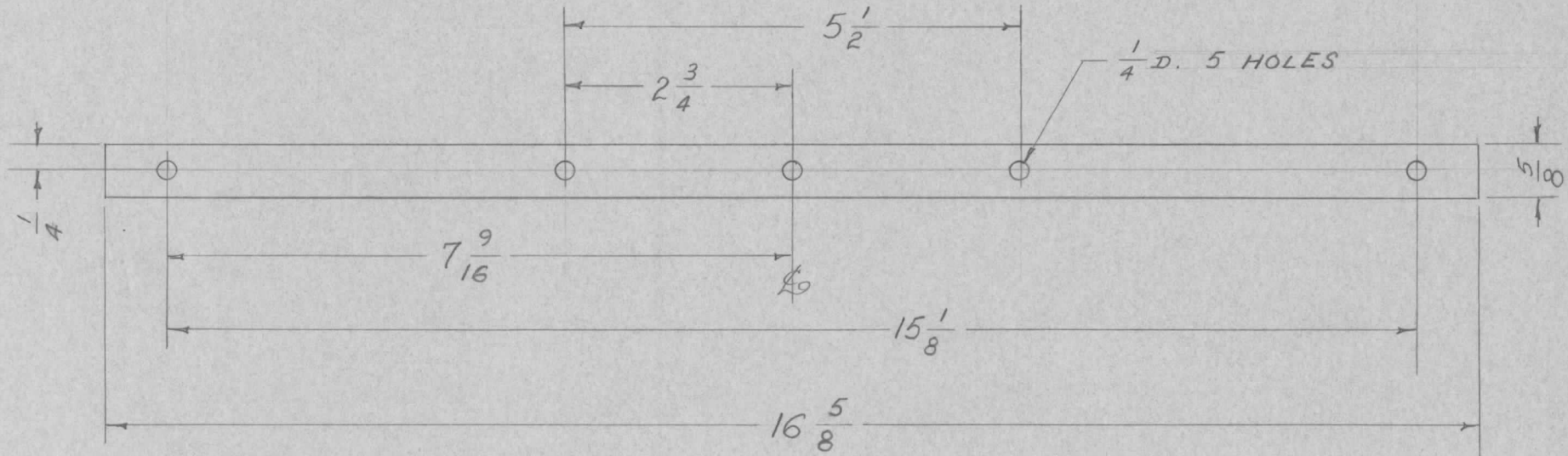
MS-364 B

MAXIMUM ALLOWABLE TOLERANCES HAVE BEEN DETERMINED AND DEVIATIONS WILL BE CAUSE FOR REJECTION. REMOVE ALL BURRS AND SHARP EDGES

DECIMALS .X ± .05 .XX ± .01 .XXX ± .005	TOLERANCES	FRACTIONS ± 1/64 ANGLES ± 0° 30'
--	------------	---

CUT HERE
GUARANTEED
2.46

REQ. PER UNIT	USED ON			
	MODEL	PROJECT NO.	ASS'Y. NO.	DATE
2	LPP-1,2,3			5-8-55



REQ.	ITEM	PART NO.	DESCRIPTION	SYMBOL
		.064	THE TECHNICAL MATERIEL CORP.	
		STOCK SIZE	MAMARONECK. NEW YORK	
		ALUMINUM	SHIM STRIP	
		MATERIAL	LPP-1-2-3	
		WEIGHT PER PC.		
		52 S. H32		
		TYPE & TEMPER		
		HEAT TREAT. SPEC.		
		S404 IRIDITE		
		FINISH & SPEC. NO.		

B	1	S404-IRIDITE S101-CAUSTIC DIP	12-7 59	1001	⌀	EMN	
A	1	REDRAWN - REVISED	5-3-55	1	PB	JAB WDC	
ISSUE	ITEM	CHANGED FROM	DATE	CN. NO.	DRAFTS	CHECKER	ENG. APP.

TOLERANCES		SCALE
ALL OTHERS	DEC. DIM. ± FRAC. DIM. ± 1/64 ANGULAR DIM. ±	DRILL, PUNCH, COMMERCIAL STOCK SIZES AND MANUFACTURERS TOLERANCES ARE NOT INCLUDED.

DRAWN	ELEC. DES. APP.	MECH. DES. APP.
JAB		WDC
CHECKED	FINAL APPROVAL	
	MS-364	B

IF IT IS FOUND DESIRABLE TO CHANGE ANY TOLERANCE OR OTHER DETAIL SPECIFIED ON THIS DRAWING NOTIFY THE PURCHASER PROMPTLY.

UNLESS OTHERWISE SPECIFIED
DIMENSIONS ARE IN INCHES AND INCLUDE
CHEMICALLY APPLIED OR PLATED FINISHES

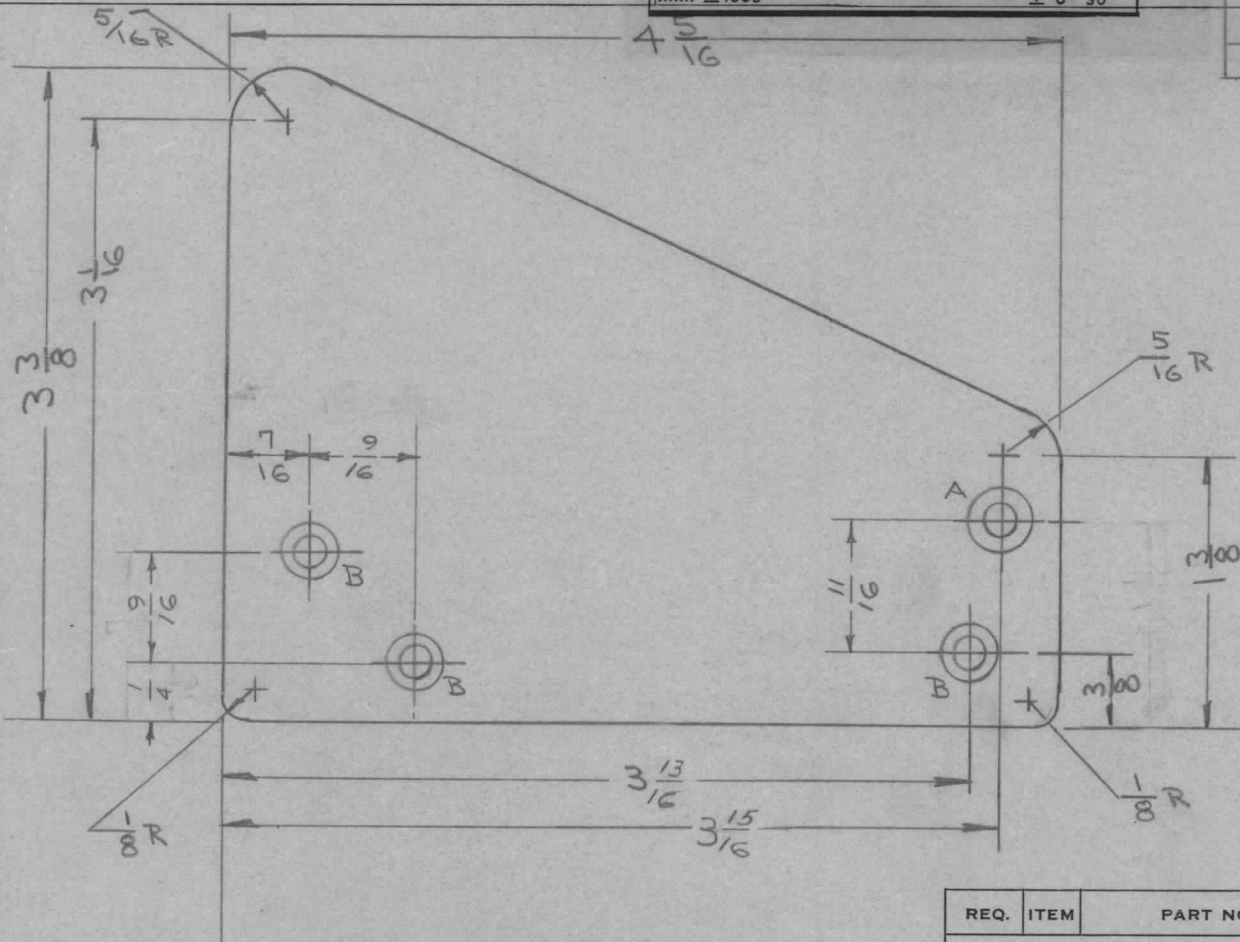
MS-367A

MAXIMUM ALLOWABLE TOLERANCES HAVE BEEN DETERMINED AND DEVIATIONS WILL BE CAUSE FOR REJECTION.
REMOVE ALL BURRS AND SHARP EDGES

DECIMALS	FRACTIONS
.X ± .05	± 1/64
.XX ± .01	ANGLES ± 0° 30'
.XXX ± .005	

CUT HERE
GUARANTEED
2-68

REQ PER UNIT	USED ON			
	MODEL	PROJECT NO.	ASS'Y. NO.	DATE
1	VOX	101	A-619	5/19/53
1	VOX-1-2	291	/	1-24-55



A = Drill & c'sk For #8 F.Hd Sc. 1 Req.
B = Drill & c'sk For #6 F.Hd. Sc. 3 Req.

NOTE:
ALL Sharp Edges To
Be Sanded Smooth.

REQ.	ITEM	PART NO.	DESCRIPTION	SYMBOL
		1/8 (.125)	THE TECHNICAL MATERIEL CORP. MAMARONECK, NEW YORK	
		STOCK SIZE		
		ALUMINUM	RECEPTACLE, GUARD	
		MATERIAL	WEIGHT PER PC.	
		24S-T3		
		TYPE & TEMPER		
			DRAWN	ELEC. DES. APP.
			C.B.D. 5/19/53	AJT
			CHECKED	FINAL APPROVAL
		HEAT TREAT. SPEC.		
		5-101 - ALUMINUM 5107		
		FINISH & SPEC. NO.		MS-367A

ISSUE	ITEM	CHANGED FROM	DATE	CN. NO.	DRAFTS	CHECKER	ENG. APP.
A	1	COMPLETE REVISION	1-24-55	1	A.B.	JAWA	WY

TOLERANCES	SCALE
DEC. DIM. ± FRAC. DIM. ± 1/64 ANGULAR DIM. ±	DRILL, PUNCH, COMMERCIAL STOCK SIZES AND MANUFACTURERS TOLERANCES ARE NOT INCLUDED.

IF IT IS FOUND DESIRABLE TO CHANGE ANY TOLERANCE OR OTHER DETAIL SPECIFIED ON THIS DRAWING NOTIFY THE PURCHASER PROMPTLY.

UNLESS OTHERWISE SPECIFIED DIMENSIONS ARE IN INCHES AND INCLUDE CHEMICALLY APPLIED OR PLATED FINISHES

CUT HERE GUARANTEED 2-66

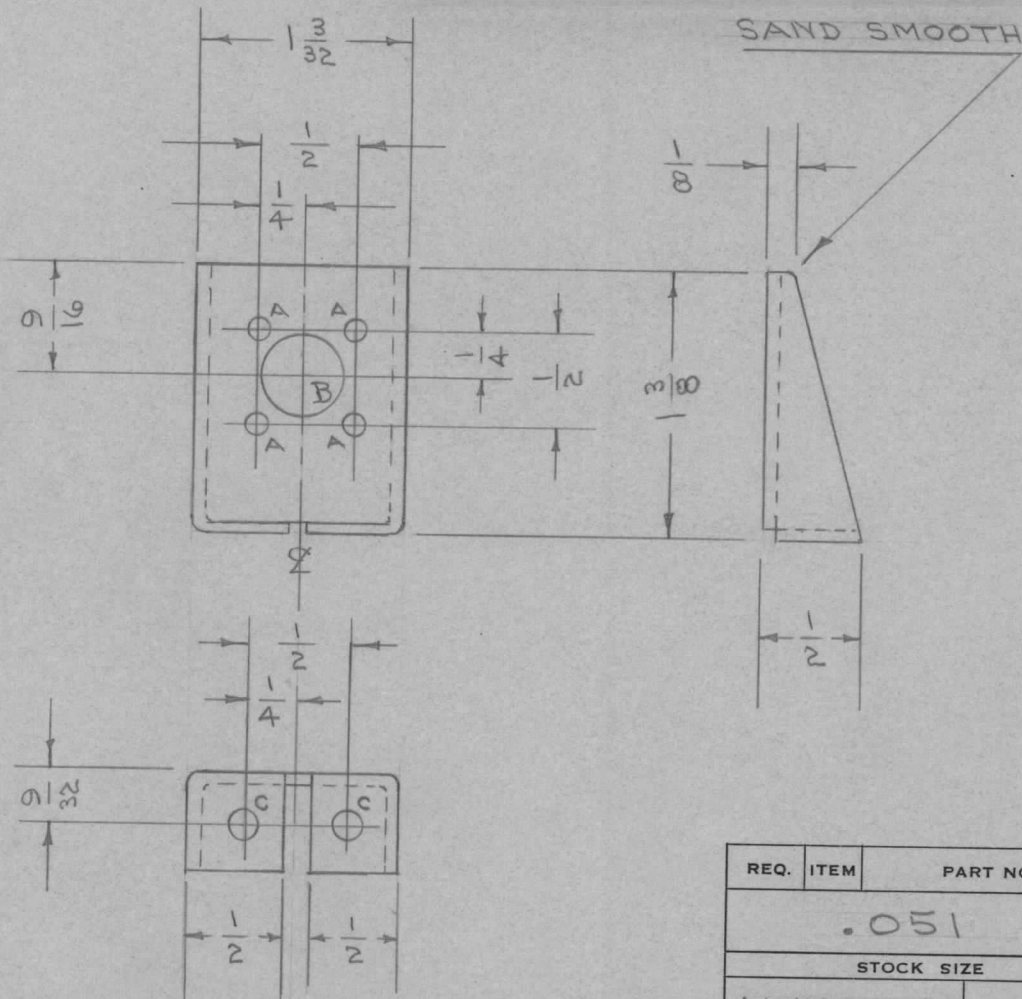
MS-369 A

MAXIMUM ALLOWABLE TOLERANCES HAVE BEEN DETERMINED AND DEVIATIONS WILL BE CAUSE FOR REJECTION. REMOVE ALL BURRS AND SHARP EDGES

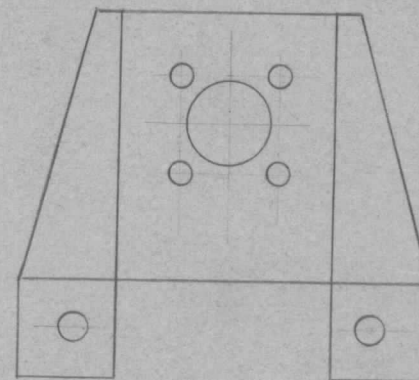
DECIMALS	TOLERANCES	FRACTIONS
.X ± .05		± 1/64
.XX ± .01		ANGLES ± 0° 30'
.XXX ± .005		

USED ON

MODEL	PROJECT NO.	ASS'Y. NO.	DATE
DMK-4	140	A-252	5-26-53



A - 1/8 (.125) D. 4 HOLES REQ.
 B - 7/16 (.437) D. 1 HOLE REQ.
 C - 5/32 (.156) D. 2 HOLES REQ.



BLANK LAYOUT

REQ.	ITEM	PART NO.	DESCRIPTION	SYMBOL
		.051	THE TECHNICAL MATERIEL CORP.	
		STOCK SIZE	MAMARONECK, NEW YORK	
	ALUMINUM	#	BRACKET	
	MATERIAL	WEIGHT PER PC.	REAR PANEL	
		52S-H32		
		TYPE & TEMPER	C.D.D. 5-26-53	
		#	DRAWN	ELEC. DES. APP.
		HEAT TREAT. SPEC.	7480	MECH. DES. APP.
		S404-IRIDITE	CHECKED	FINAL APPROVAL
		FINISH & SPEC. NO.		MS-369 A

A	1	S404-IRIDITE WAS S101-CAUSTIC DIP	12-7 59	1001	P	EMN	
ISSUE	ITEM	CHANGED FROM	DATE	CN. NO.	DRAFTS	CHECKER	ENG. APP.

TOLERANCES		SCALE	DRILL, PUNCH, COMMERCIAL STOCK SIZES AND MANUFACTURERS TOLERANCES ARE NOT INCLUDED.
ALL OTHERS	DEC. DIM. ± FRAC. DIM. ± ANGULAR DIM. ±	#	

IF IT IS FOUND DESIRABLE TO CHANGE ANY TOLERANCE OR OTHER DETAIL SPECIFIED ON THIS DRAWING NOTIFY THE PURCHASER PROMPTLY.

MAXIMUM ALLOWABLE TOLERANCES HAVE BEEN DETERMINED AND DEVIATIONS WILL BE CAUSE FOR REJECTION. REMOVE ALL BURRS AND SHARP EDGES

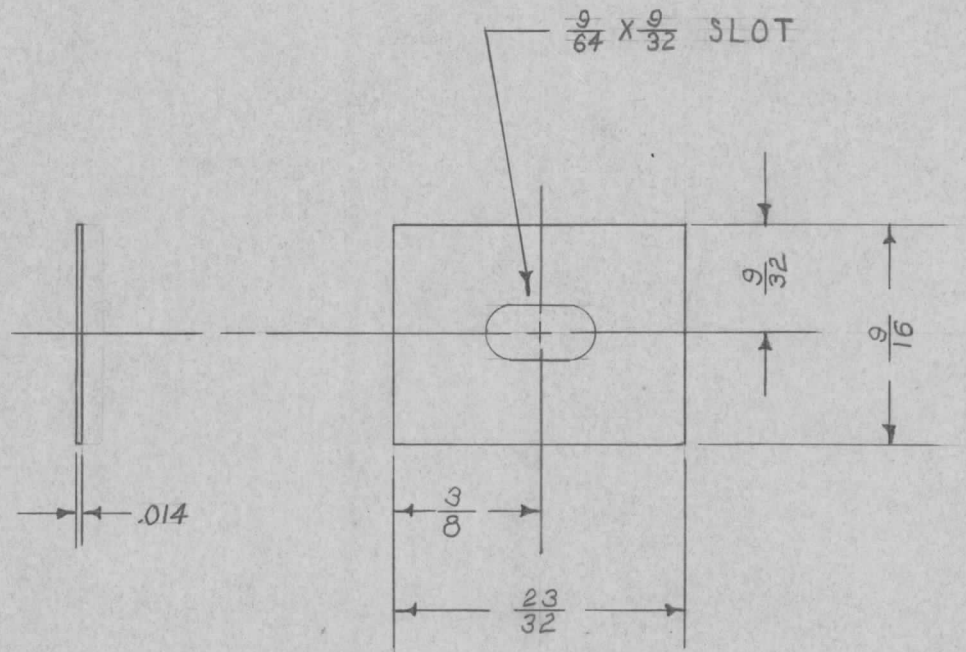
UNLESS OTHERWISE SPECIFIED DIMENSIONS ARE IN INCHES AND INCLUDE CHEMICALLY APPLIED OR PLATED FINISHES

DECIMALS	TOLERANCES	FRACTIONS
.X ± .05		± 1/64
.XX ± .01		ANGLES
.XXX ± .005		± 0° 30'

CUT HERE
GUARANTEED
100%
1-66
CITY
CENT
INT

MS-370 A

USED ON			
MODEL	PROJECT NO.	ASS'Y. NO.	DATE
3	VOX	101	A-631



REQ.	ITEM	PART NO.	DESCRIPTION	SYMBOL
		.014	THE TECHNICAL MATERIEL CORP.	
		STOCK SIZE	MAMARONECK, NEW YORK	
		PHOS. BRONZE	CLAMP,	
		MATERIAL	CENTER LENS	
		WEIGHT PER PC.	F.M. 7-8-53	ASJ
		TYPE & TEMPER	ASJ	1102
		HEAT TREAT. SPEC.	CDP 7/9/53	ASJ
		FINISH & SPEC. NO.	S-105 CADMIUM PLATE	ASJ
			CHECKED	FINAL APPROVAL
				MS-370 A

A	I	WAS	I	PER UNIT	1-17-55	I	P.B.	J.A. DeWolfe
ISSUE	ITEM	CHANGED FROM	DATE	CN. NO.	DRAFTS	CHECKER	ENG. APP.	

TOLERANCES		SCALE
ALL OTHERS	DEC. DIM. ± FRAC. DIM. ± 1/64 ANGULAR DIM. ±	DRILL, PUNCH, COMMERCIAL STOCK SIZES AND MANUFACTURERS TOLERANCES ARE NOT INCLUDED.

IF IT IS FOUND DESIRABLE TO CHANGE ANY TOLERANCE OR OTHER DETAIL SPECIFIED ON THIS DRAWING NOTIFY THE PURCHASER PROMPTLY.

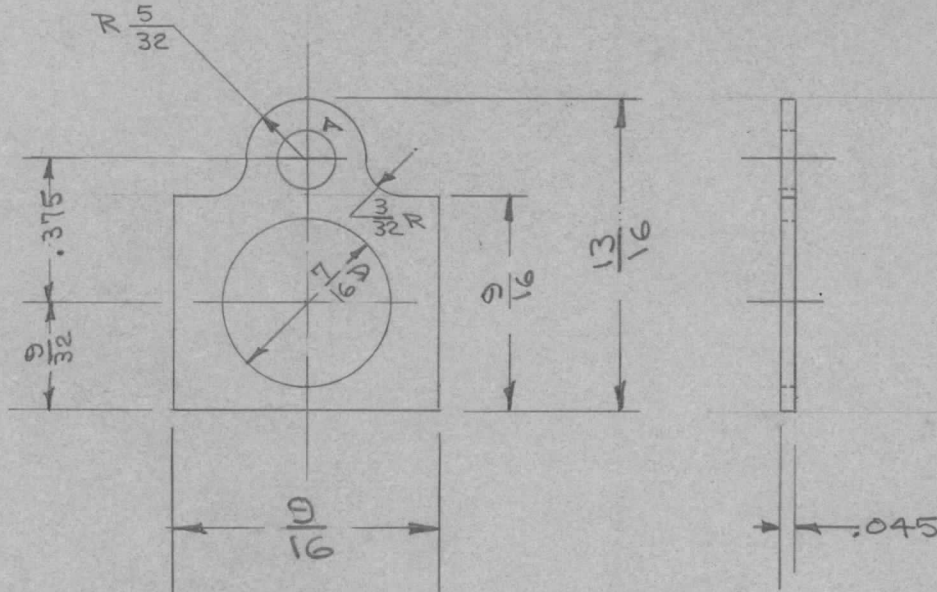
MS-373

MAXIMUM ALLOWABLE TOLERANCES HAVE BEEN DETERMINED AND DEVIATIONS WILL BE CAUSE FOR REJECTION. REMOVE ALL BURRS AND SHARP EDGES

RELEASED

USED ON

MODEL	PROJECT NO.	ASS'Y. NO.	DATE
JJ-117		A-479	



A = 5/32 D - 1 Hole

REQ.	ITEM	PART NO.	DESCRIPTION	SYMBOL
		.045	THE TECHNICAL MATERIEL CORP.	
		STOCK SIZE	MAMARONECK, NEW YORK	
		BRASS	MOUNTING PLATE	
		MATERIAL	WEIGHT PER PC.	
		HALF HARD		
		TYPE & TEMPER		
		HEAT TREAT. SPEC.		
		FINISH & SPEC. NO.		

ISSUE	ITEM	CHANGED FROM	DATE	CN. NO.	DRAFTS	CHECKER	ENG. APP.
TOLERANCES			SCALE				
ALL OTHERS	DEC. DIM. ± .005	DRILL, PUNCH, COMMERCIAL STOCK SIZES AND MANUFACTURERS TOLERANCES ARE NOT INCLUDED.					
	FRAC. DIM. ± 1/64						
	ANGULAR DIM. ±						

DRAWN: *J. De* 6-11-53
 WDC 6-12-53
 MECH. DES. APP. *WDC*
 CHECKED
 FINAL APPROVAL
 MS-373

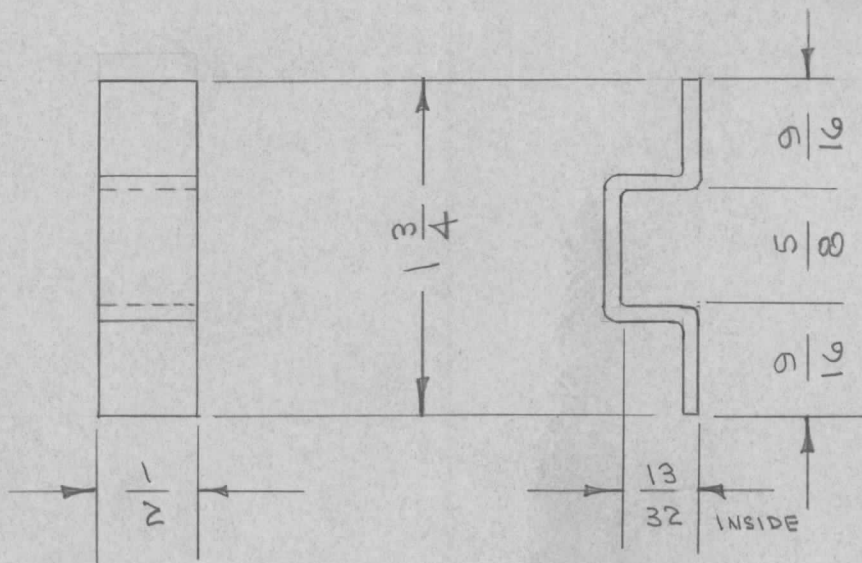
IF IT IS FOUND DESIRABLE TO CHANGE ANY TOLERANCE OR OTHER DETAIL SPECIFIED ON THIS DRAWING NOTIFY THE PURCHASER PROMPTLY.

MS-376 A

MAXIMUM ALLOWABLE TOLERANCES HAVE BEEN DETERMINED AND DEVIATIONS WILL BE CAUSE FOR REJECTION. REMOVE ALL BURRS AND SHARP EDGES

USED ON

MODEL	PROJECT NO.	ASSY. NO.	DATE
DDR-2			7-8-53



NOTE: FINISH
 S-A04 IRIDITE DIP
 S-114 ZINC CHROMATE PRIMER
 PAINT TO MATCH SAMPLE SUPPLIED

REQ.	ITEM	PART NO.	DESCRIPTION	SYMBOL
		.051	THE TECHNICAL MATERIEL CORP. MAMARONECK, NEW YORK	
		STOCK SIZE		
		ALUMINUM	BRACKET, TRIM STRIP	
		MATERIAL		
		52S H32	CDD. 7/8/53	
		WEIGHT PER PC.		
		TYPE & TEMPER	DRAWN	ELEC. DES. APP.
		HEAT TREAT. SPEC.	MECH. DES. APP.	
		FINISH & SPEC. NO.	CHECKED	FINAL APPROVAL
		SEE NOTE		MS-376 A

ISSUE	ITEM	CHANGED FROM	DATE	CN. NO.	DRAFTS	CHECKER	ENG. APP.
A	1	S404- IRIDITE WAS S101- CAUSTIC DIP	12-7 53	1001	UP		EMN
TOLERANCES			SCALE //				
ALL OTHERS	DEC. DIM. ±	FRAC. DIM. ± 1/64	DRILL, PUNCH, COMMERCIAL STOCK SIZES AND MANUFACTURERS TOLERANCES ARE NOT INCLUDED.				
	ANGULAR DIM. ±						

IF IT IS FOUND DESIRABLE TO CHANGE ANY TOLERANCE OR OTHER DETAIL SPECIFIED ON THIS DRAWING NOTIFY THE PURCHASER PROMPTLY.

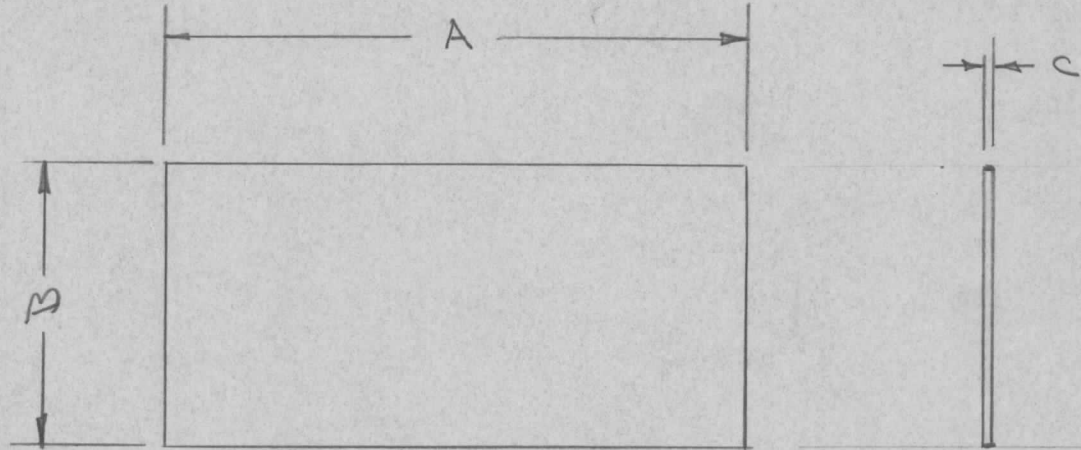
MS-378

MAXIMUM ALLOWABLE TOLERANCES HAVE BEEN DETERMINED AND DEVIATIONS WILL BE CAUSE FOR REJECTION. REMOVE ALL BURRS AND SHARP EDGES

USED ON

MODEL	PROJECT NO.	ASS'Y. NO.	DATE
KS-85-X	J-227		8-20-53

TMC NO	DIMENSIONS			REQ. PER UNIT
	A	B	C	
MS-378-1	8	3 1/2	3/64	7
MS-378-2	6 1/4	3 1/2	3/64	7



UNLESS OTHERWISE SPECIFIED
DIMENSIONS ARE IN INCHES AND INCLUDE
CHEMICALLY APPLIED OR PLATED FINISHES

DECIMALS	FRACTIONS
.X ± .05	± 1/64
.XX ± .01	ANGLES
.XXX ± .005	± 0° 30'

TOLERANCES

CUT HERE
GUARANTEED
2-66

REQ.	ITEM	PART NO.	DESCRIPTION	SYMBOL
			THE TECHNICAL MATERIEL CORP. MAMARONECK, NEW YORK	
		LEAD	LEAD, SHEATH	
		MATERIAL	WEIGHT PER PC.	
		TYPE & TEMPER		
		HEAT TREAT. SPEC.		
		FINISH & SPEC. NO.		

ISSUE	ITEM	CHANGED FROM	DATE	CN. NO.	DRAFTS	CHECKER	ENG. APP.

TOLERANCES	SCALE
ALL OTHERS DEC. DIM. ± FRAC. DIM. ± ANGULAR DIM. ±	DRILL, PUNCH, COMMERCIAL STOCK SIZES AND MANUFACTURERS TOLERANCES ARE NOT INCLUDED.

DRAWN: *[Signature]*
 ELEC. DES. APP.: *[Signature]*
 MECH. DES. APP.: *[Signature]*
 CHECKED: *[Signature]*
 FINAL APPROVAL: *[Signature]*

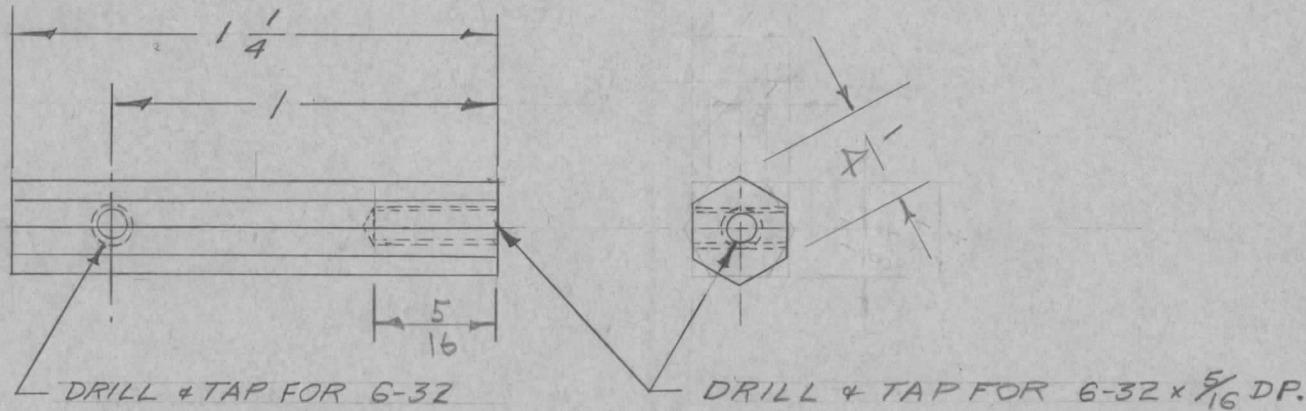
MS-378

IF IT IS FOUND DESIRABLE TO CHANGE ANY TOLERANCE OR OTHER DETAIL SPECIFIED ON THIS DRAWING NOTIFY THE PURCHASER PROMPTLY.

MS-398 *D*

MAXIMUM ALLOWABLE TOLERANCES HAVE BEEN DETERMINED AND DEVIATIONS WILL BE CAUSE FOR REJECTION. REMOVE ALL BURRS AND SHARP EDGES

REQ PER UNIT	USED ON			
	MODEL	PROJECT NO.	ASS'Y. NO.	DATE
3	RSD-2	170	A-544	9-17-53
3	RSD-2	170	A-545	9-26-53
3	RSD-2	170	A-548	9-28-53
2	RSC-2	170		11/9/54



UNLESS OTHERWISE SPECIFIED
DIMENSIONS ARE IN INCHES AND INCLUDE
CHEMICALLY APPLIED OR PLATED FINISHES

DECIMALS .X ± .05 .XX ± .01 .XXX ± .005	TOLERANCES	FRACTIONS ± 1/64 ANGLES ± 0° 30'
--	------------	---

CUT HERE
GUARANTEED
2-66

REQ.	ITEM	PART NO.	DESCRIPTION	SYMBOL
		1/4 HEX. ROD	THE TECHNICAL MATERIEL CORP. MAMARONECK, NEW YORK	
		STOCK SIZE		
		ALUMINUM	TERMINAL BOARD MOUNTING BUSHING	
		MATERIAL WEIGHT PER PC.		
		175 - T4	46 9-16-53	A. J. J.
		TYPE & TEMPER	DRAWN	ELEC. DES. APP.
		HEAT TREAT. SPEC.	C. D. D. 9/24/53	MECH. DES. APP.
		FINISH & SPEC. NO.	CHECKED	FINAL APPROVAL
		S404 IRIDITE		MS-398 <i>D</i>

D	1	S404-IRIDITE WAS S101-CAUSTIC DIP	12-7 59	1001	P		EMN
C	1	WAS 1/4 SQUARE	12/11/53	3	B	JAN	CDC
	Z	TYPE & TEMPER WAS 635-T5					
B	1	TYPE & TEMPER ADDED	12/13/54	2	P.B.	COS	WDE
A	1	QUAN. ADDED	11/9/53	1	JAN	COS	WDE

ISSUE	ITEM	CHANGED FROM	DATE	CN. NO.	DRAFTS	CHECKER	ENG. APP.
TOLERANCES		SCALE					
ALL OTHERS	DEC. DIM. ± FRAC. DIM. ± ANGULAR DIM. ±	DRILL, PUNCH, COMMERCIAL STOCK SIZES AND MANUFACTURERS TOLERANCES ARE NOT INCLUDED.					

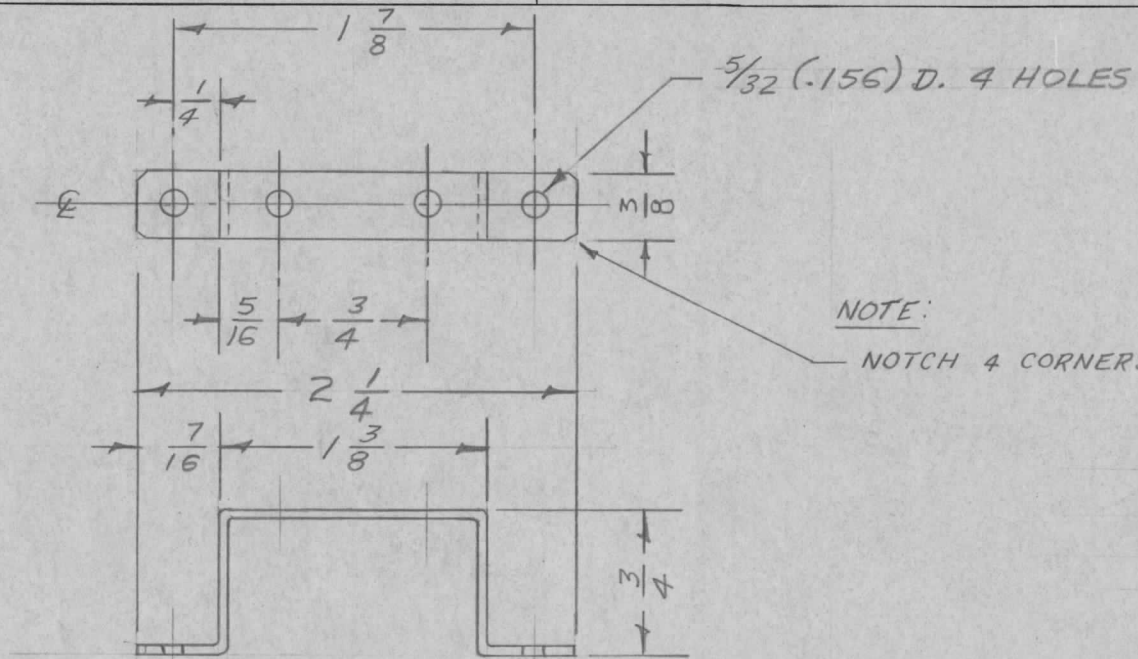
IF IT IS FOUND DESIRABLE TO CHANGE ANY TOLERANCE OR OTHER DETAIL SPECIFIED ON THIS DRAWING NOTIFY THE PURCHASER PROMPTLY.

MAXIMUM ALLOWABLE TOLERANCES HAVE BEEN DETERMINED AND DEVIATIONS WILL BE CAUSE FOR REJECTION. REMOVE ALL BURRS AND SHARP EDGES

MS-399 B

USED ON

MODEL	PROJECT NO.	ASS'Y. NO.	DATE
RL-110	170	A-543	9-25-53



BLANK SIZE

$3 \frac{1}{2} \times \frac{3}{8}$

UNLESS OTHERWISE SPECIFIED DIMENSIONS ARE IN INCHES AND INCLUDE CHEMICALLY APPLIED OR PLATED FINISHES

DECIMALS	TOLERANCES	FRACTIONS
.X ± .05		± 1/64
.XX ± .01		ANGLES ± 0° 30'
.XXX ± .005		

CUT HERE GUARANTEED 2-56

REQ.	ITEM	PART NO.	DESCRIPTION	SYMBOL
		.064	THE TECHNICAL MATERIEL CORP.	
		STOCK SIZE	MAMARONECK, NEW YORK	
		ALUMINUM	RELAY BRACKET	
		MATERIAL		
		WEIGHT PER PC.		
		525-H32	16 9-25-53	
		TYPE & TEMPER	Ao To To	WDE
		HEAT TREAT. SPEC.	DRAWN	ELEC. DES. APP.
		S404-IRIDITE	CHECKED	MECH. DES. APP.
		FINISH & SPEC. NO.		FINAL APPROVAL
				MS-399 B

B	1	S404-IRIDITE WAS S101-CAUSTIC DIP	12-7 59	1001	JP	EMN
A	1	NOTE ADDED	2-25-55	1	P.B.	JADE WDE
ISSUE	ITEM	CHANGED FROM	DATE	CN. NO.	DRAFTS CHECKER	ENG. APP.

TOLERANCES		SCALE	DRILL, PUNCH, COMMERCIAL STOCK SIZES AND MANUFACTURERS TOLERANCES ARE NOT INCLUDED.
ALL OTHERS	DEC. DIM. ± FRAC. DIM. ± ANGULAR DIM. ±	1/16	