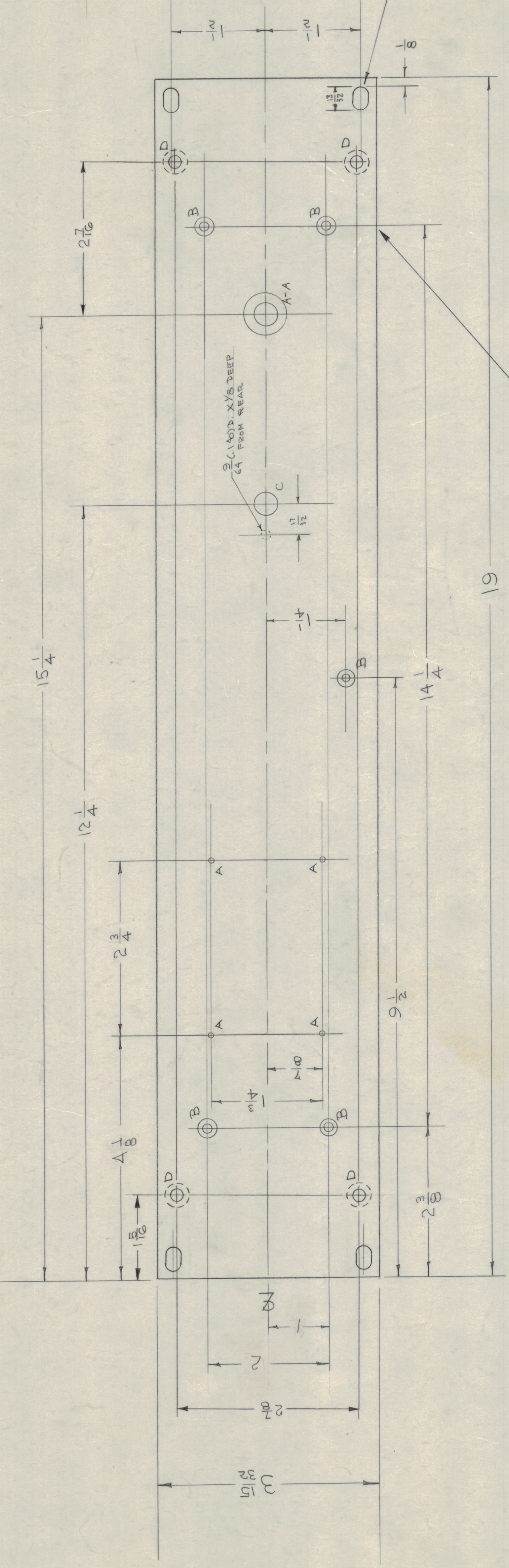
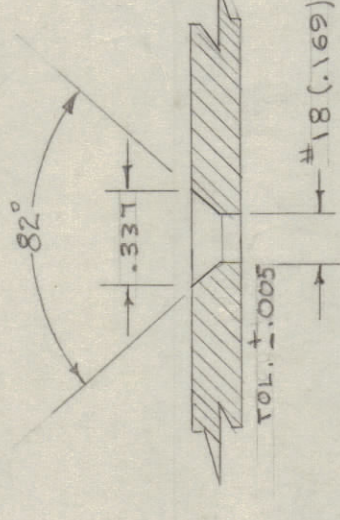


IF IT IS FOUND DESIRABLE TO CHANGE ANY TOLERANCE OR DIMENSION ON THIS DRAWING NOTIFY THE PURCHASER PROMPTLY.
 MAXIMUM ALLOWABLE TOLERANCES HAVE BEEN DETERMINED AND DEVIATIONS WILL BE CAUSE FOR REJECTION.
 REMOVE ALL BUMPS AND SHARP EDGES

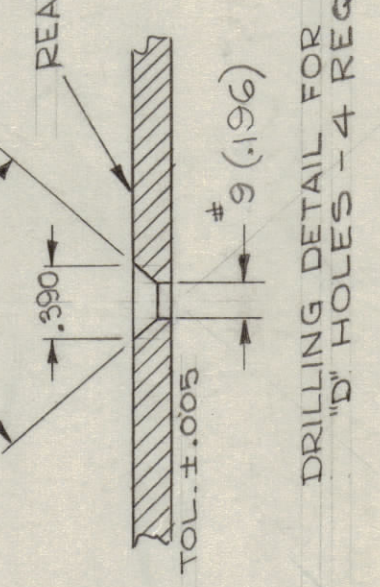
- A- NO. 47 (.018) DRILL 4 HOLES REQ.
- B- DRILL 8 CSINK FOR 8-32 FLAT HEAD SEE DETAIL
- C- 3/64 (.390) D. 1 HOLES REQ.
- D- SEE DETAIL 4 HOLES REQ



MS-382 J



DRILLING DETAIL FOR 'B' HOLES
 DIA. SHOWN ARE AFTER PAINTING



DRILLING DETAIL FOR 'B' HOLES - 4 REQ

METAL STAMP TMC PART NO. (MS-382-J)
 7/8 HIGH GOTHIC ON REAR
 OF PANEL

- * NOTE: FINISH S-404 IRIDITE
- * S-114 ZINC CHROMATE PRIMER
- * S-115 SMOOTH GRAY ENAMEL

PAINT FRONT & EDGES OF PANEL
 FRONT VIEW SHOWN
 * OR PRIME AND PAINT TO CUSTOMERS SPECIFICATIONS

ISSUE	ITEM	CHANGED FROM	DATE	ON NO DRAFTS	CHECKER	ENG. APP.
J	1	SEE A BEE ADDED	6/20/51		EMN	
H	2	ENG. INFO. ADDED	5/16/48		W.D. LUC	
G	1	S-404 IRIDITE WAS	12/15/49		W.D. LUC	
F	1	DETAIL FOR B HOLES ADDED	6/20/51		W.D. LUC	
E	1	ENG. INFO. ADDED	5/16/48		W.D. LUC	
D	1	C HOLES WAS 3/8	1/14/48		W.D. LUC	
C	1	1A/4 WAS 2 1/16	1/14/48		W.D. LUC	
B	1	HIGH IMPEDANCE HOLE	10/14/48		W.D. LUC	
A	1	PAINT SPEC. CHGD.	7/14/48		W.D. LUC	
A	1	PAINT NOTE ADDED	11/23/51		W.D. LUC	

PROPERTY OF THE TECHNICAL MATERIAL CORPORATION
 ALL PERSONS RECEIVING THIS DRAWING
 SHALL SIGN IN THE REVISION RECORD
 THIS DRAWING IS THE PROPERTY OF THE TECHNICAL MATERIAL CORPORATION
 IT IS TO BE KEPT IN THE ORIGINAL FILED RECORD
 IT IS TO BE KEPT IN THE ORIGINAL FILED RECORD
 IT IS TO BE KEPT IN THE ORIGINAL FILED RECORD

PROPERTY OF THE TECHNICAL MATERIAL CORPORATION
 MAMARONECK, NEW YORK

REF. LETTERING (LD-940)	ITEM	PART NO.	DESCRIPTION	SYMBOL
	3/16		THE TECHNICAL MATERIAL CORP. MAMARONECK, NEW YORK	
	ALUMINUM		FRONT PANEL	
	24S-T3		RSF	
			TYPE & TEMPER	
			CDDB-18-53KZ	
			DRAWN	
			CHECKED	
			APPROVED	
			MECH. DES. APP.	
			MECH. DES. APP.	
			FINAL APPROVAL	
			SUPERCEDES	
			RSF-1	
			MS-382	

MODEL	PROJECT NO.	ASBY. NO.	DATE
RSF-3	170	A-74B	6-10-53
RSF-2			9-30-54