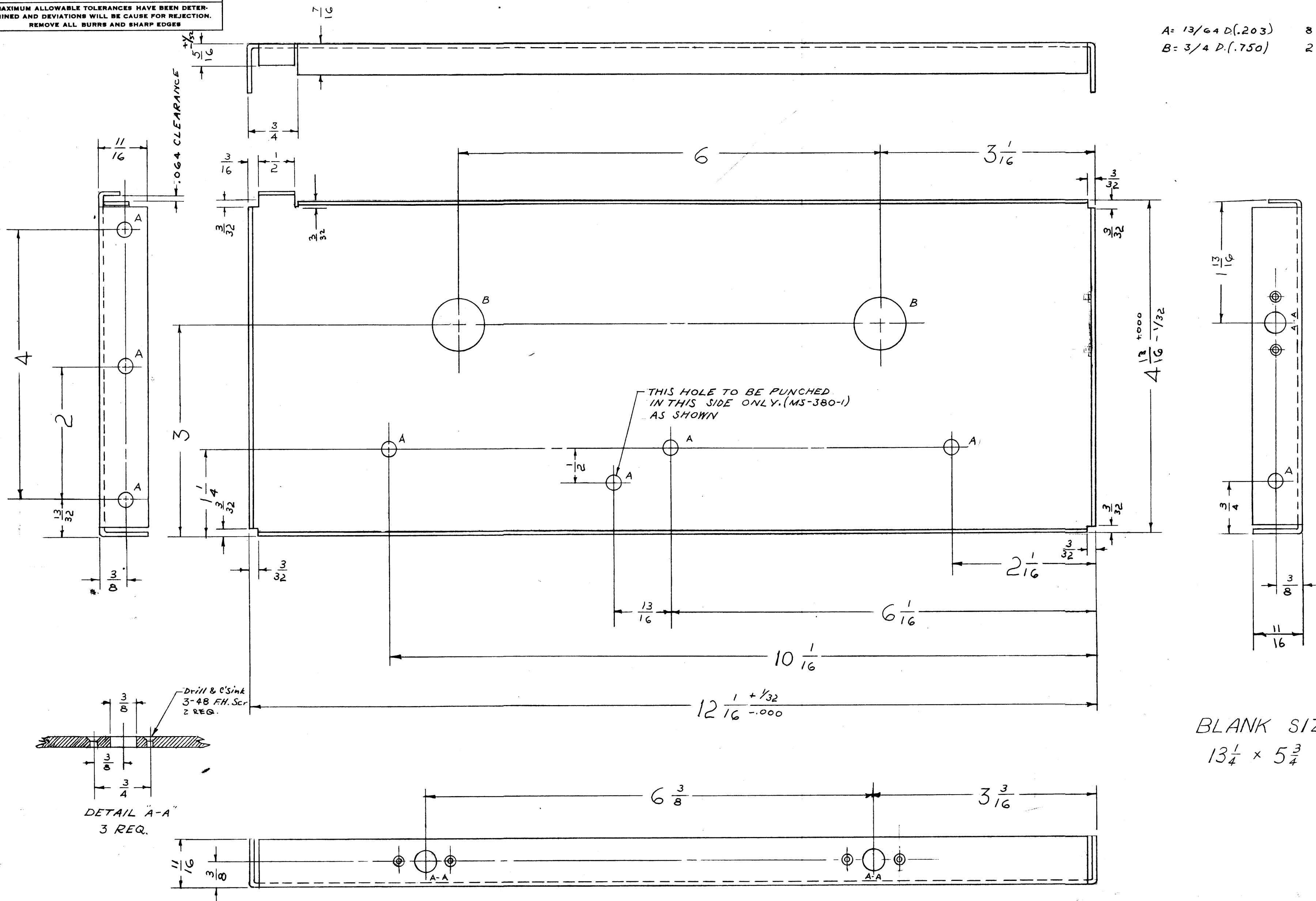


IF IT IS FOUND DESIRABLE TO CHANGE ANY TOLERANCE OR OTHER DETAIL SPECIFIED ON THIS DRAWING NOTIFY THE PURCHASER PROMPTLY.

MAXIMUM ALLOWABLE TOLERANCES HAVE BEEN DETERMINED AND DEVIATIONS WILL BE CAUSE FOR REJECTION. REMOVE ALL BURRS AND SHARP EDGES

A: 13/64 D.(.203) 8 HOLES REQ'D.
 B: 3/4 D.(.750) 2 HOLES REQ'D.



MS-380 C

BLANK SIZE
 13 1/4 x 5 3/4

NOTE: MAKE ONE WITH BENDS AS SHOWN (MS-380-1 LEFT SIDE PLATE)
 MAKE ONE WITH BENDS IN OPPOSITE DIRECTION (MS-380-2 RIGHT SIDE PL)

C	2	DELETED DIMS FOR LING HDWR Dwg. No. WAS A-315	5-15-63	9008			
B	1	S104-1 IRIDITE WAS S101 CAUSTIC DIP	12-8 59	1001			EMM
A	2	COMPLETE REVISION	9-28-54	1	P.B.		
	1	REDRAWN					

ALL OTHERS	DEC. DIM. ± .005 FRAC. DIM. ± 1/64 ANGULAR DIM. ±	SCALE: DRILL, PUNCH, COMMERCIAL STOCK SIZES AND MANUFACTURERS TOLERANCES ARE NOT INCLUDED.
------------	---	---

REQ. ITEM	PART NO.	DESCRIPTION	SYMBOL
.064		THE TECHNICAL MATERIEL CORP. MAMARONECK, NEW YORK	
ALUMINUM		SIDE PLATE ASSY.	
525-H 32		MODEL RSA-2	
TYPE & TEMPER		A.B. 9-28-54	KZ
HEAT TREAT. SPEC.		DRAWN	ELEC. DES. APP. MECH. DES. APP.
FINISH & SPEC. NO.		CHECKED	FINAL APPROVAL
RSA-2	170	9-28-54	
MODEL	PROJECT NO.	ASSY. NO.	DATE