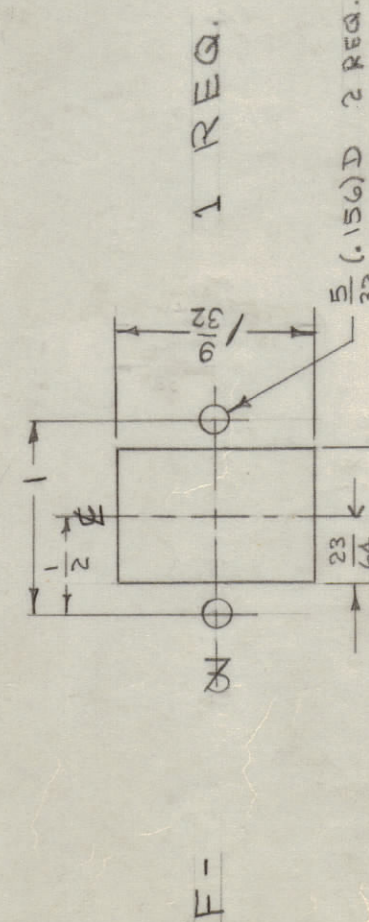
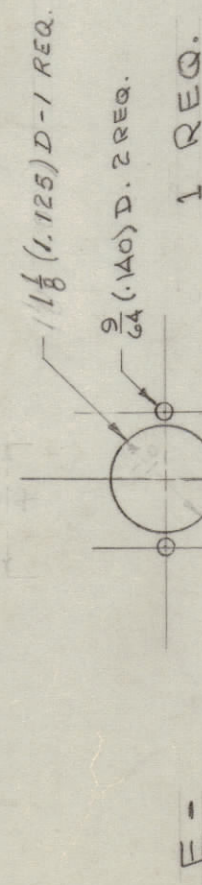


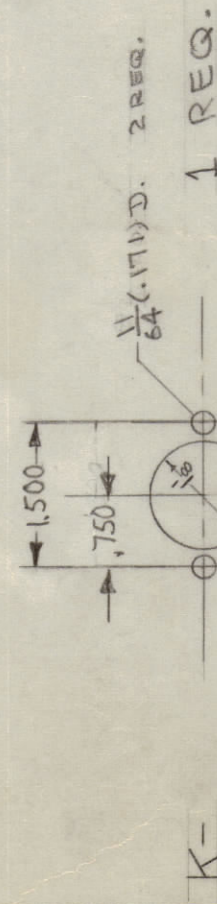
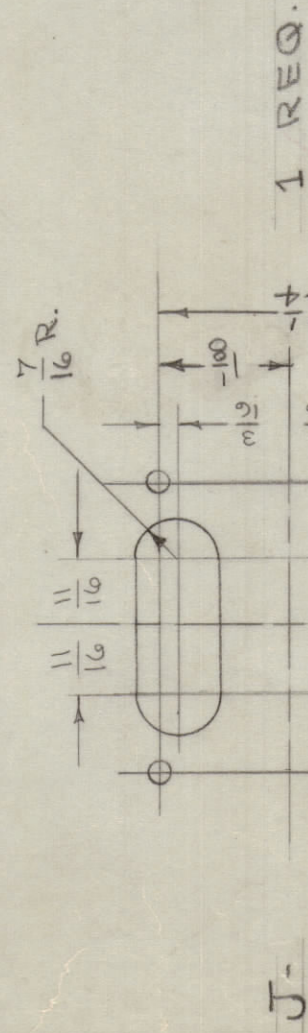
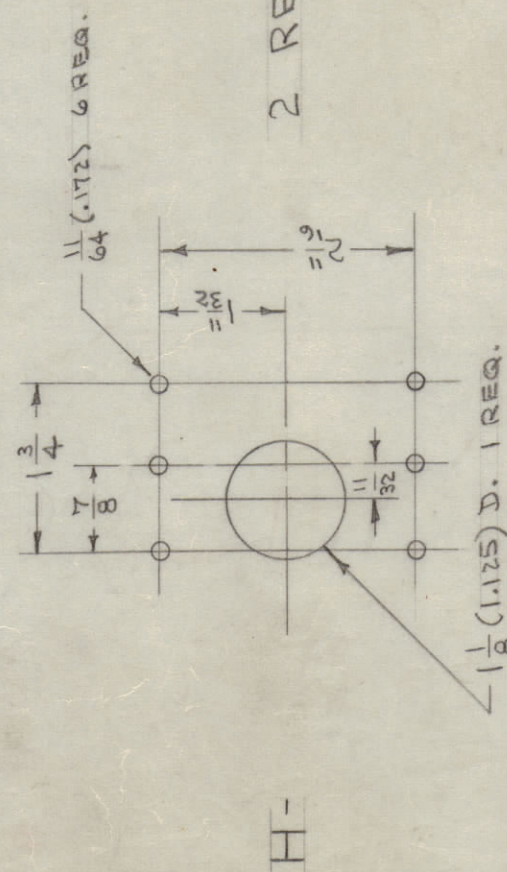
IF IT IS FOUND DESIRABLE TO CHANGE ANY TOLERANCE OR OTHER DETAIL SPECIFIED ON THIS DRAWING NOTIFY THE PURCHASER PROMPTLY. DIMENSIONS HAVE BEEN OBTAINED FROM THE DRAWING. DIMENSIONS WILL BE CAUSE FOR REJECTION. REMOVE ALL BURRS AND SHARP EDGES.

- A-1/8 (.125) D. 1 HOLES REQ.
- B-1/16 (.0625) D. 1 HOLE REQ.
- C-7/32 (.21875) D. 6 HOLES REQ.

D-.194-.191 DIA. 5 REQ.



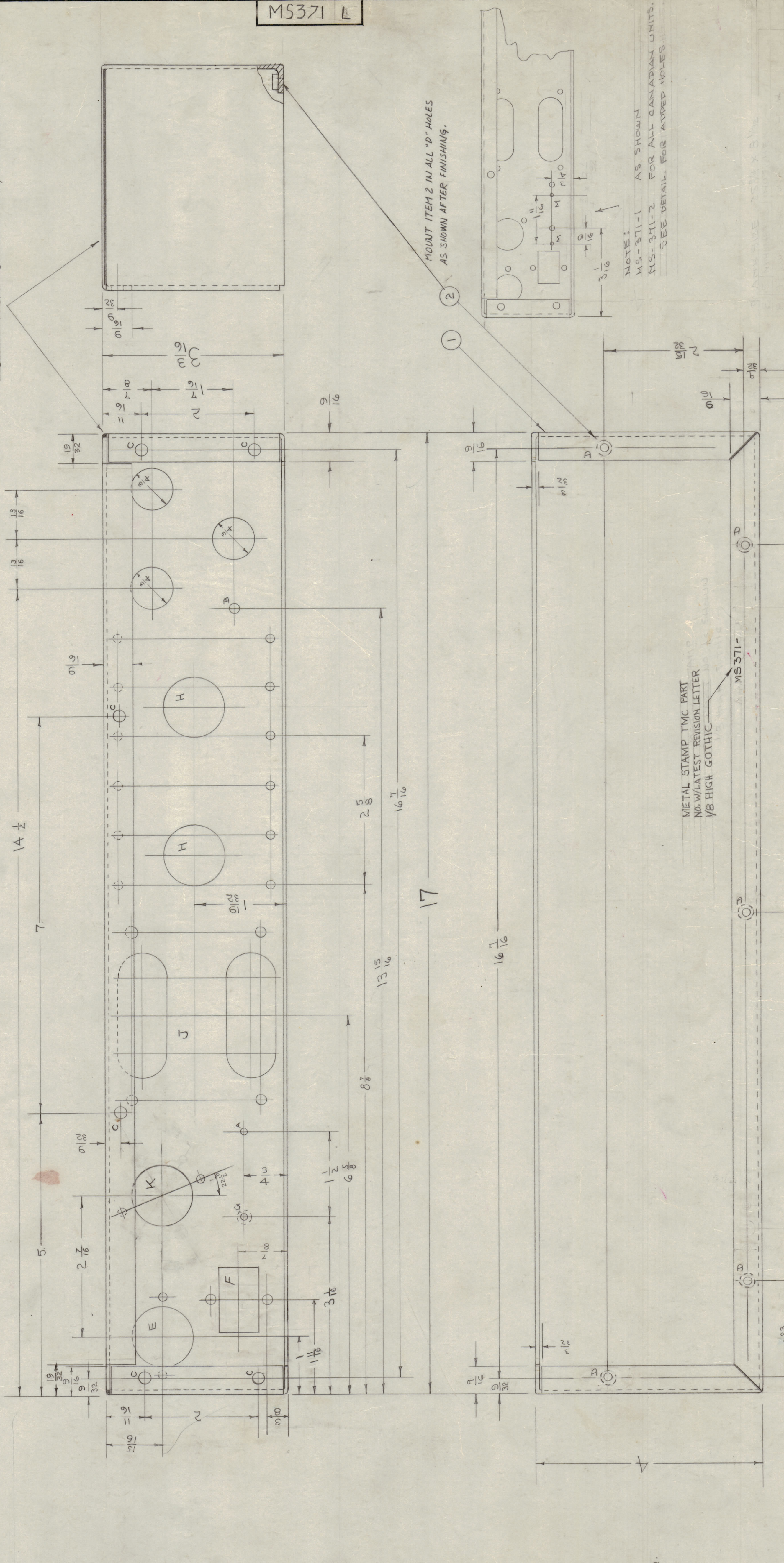
G- DRILL & C&K FOR #4 FLAT HEAD SCREW 1 REQ.



REV.	DATE	BY	CHKD.	DESCRIPTION
1	9-16-54	H.J.	H.J.	ISSUE
2	9-16-54	H.J.	H.J.	REVISION
3	9-16-54	H.J.	H.J.	REVISION
4	9-16-54	H.J.	H.J.	REVISION
5	9-16-54	H.J.	H.J.	REVISION
6	9-16-54	H.J.	H.J.	REVISION
7	9-16-54	H.J.	H.J.	REVISION
8	9-16-54	H.J.	H.J.	REVISION
9	9-16-54	H.J.	H.J.	REVISION
10	9-16-54	H.J.	H.J.	REVISION

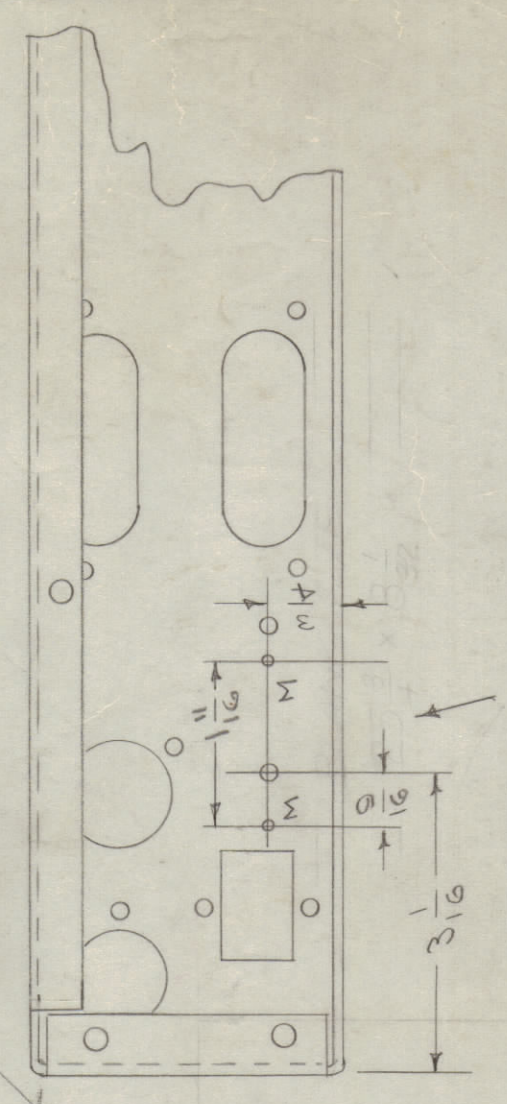
M-#A8(016) D. 2 HOLES REQ.

SEAM WELD BOTH ENDS, GRIND SMOOTH EXCESS WELD



MS371 L

MOUNT ITEM 2 IN ALL "D" HOLES AS SHOWN AFTER FINISHING.



NOTE: MS-371-1 AS SHOWN MS-371-2 FOR ALL CANADIAN UNITS. SEE DETAIL FOR ADDED HOLES.

METAL STAMP TMC PART NO. W/LATEST REVISION LETTER 1/8 HIGH GOTHIC

REG. NO.	ITEM	DESCRIPTION	SYMBOL
5	2	MS-371-2	
1	1	DELETED	

REG. NO.	ITEM	DESCRIPTION	SYMBOL
5	2	MS-371-2	
1	1	DELETED	

REG. NO.	ITEM	DESCRIPTION	SYMBOL
5	2	MS-371-2	
1	1	DELETED	

REG. NO.	ITEM	DESCRIPTION	SYMBOL
5	2	MS-371-2	
1	1	DELETED	

REV.	DATE	BY	CHKD.	DESCRIPTION
1	9-16-54	H.J.	H.J.	ISSUE
2	9-16-54	H.J.	H.J.	REVISION
3	9-16-54	H.J.	H.J.	REVISION
4	9-16-54	H.J.	H.J.	REVISION
5	9-16-54	H.J.	H.J.	REVISION
6	9-16-54	H.J.	H.J.	REVISION
7	9-16-54	H.J.	H.J.	REVISION
8	9-16-54	H.J.	H.J.	REVISION
9	9-16-54	H.J.	H.J.	REVISION
10	9-16-54	H.J.	H.J.	REVISION

REV.	DATE	BY	CHKD.	DESCRIPTION
1	9-16-54	H.J.	H.J.	ISSUE
2	9-16-54	H.J.	H.J.	REVISION
3	9-16-54	H.J.	H.J.	REVISION
4	9-16-54	H.J.	H.J.	REVISION
5	9-16-54	H.J.	H.J.	REVISION
6	9-16-54	H.J.	H.J.	REVISION
7	9-16-54	H.J.	H.J.	REVISION
8	9-16-54	H.J.	H.J.	REVISION
9	9-16-54	H.J.	H.J.	REVISION
10	9-16-54	H.J.	H.J.	REVISION

NOTICE TO PERSONS RECEIVING THIS DRAWING  
 THE TECHNICAL MATERIEL CORPORATION claims proprietary right in the material disclosed herein. This drawing is issued in confidence for engineering information only and may not be reproduced or used to manufacture anything shown hereon without permission from THE TECHNICAL MATERIEL CORPORATION to the user. This drawing is loaned for mutual assistance and is subject to recall at any time.  
 Property of:  
 THE TECHNICAL MATERIEL CORPORATION  
 MAMARONECK, NEW YORK