

IF IT IS FOUND DESIRABLE TO CHANGE ANY TOLERANCE OR OTHER DETAIL SPECIFIED ON THIS DRAWING NOTIFY THE PURCHASER PROMPTLY.

UNLESS OTHERWISE SPECIFIED DIMENSIONS ARE IN INCHES AND INCLUDE CHEMICALLY APPLIED OR PLATED FINISHES

CUT HERE GUARANTEED 2-66

MS-369 A

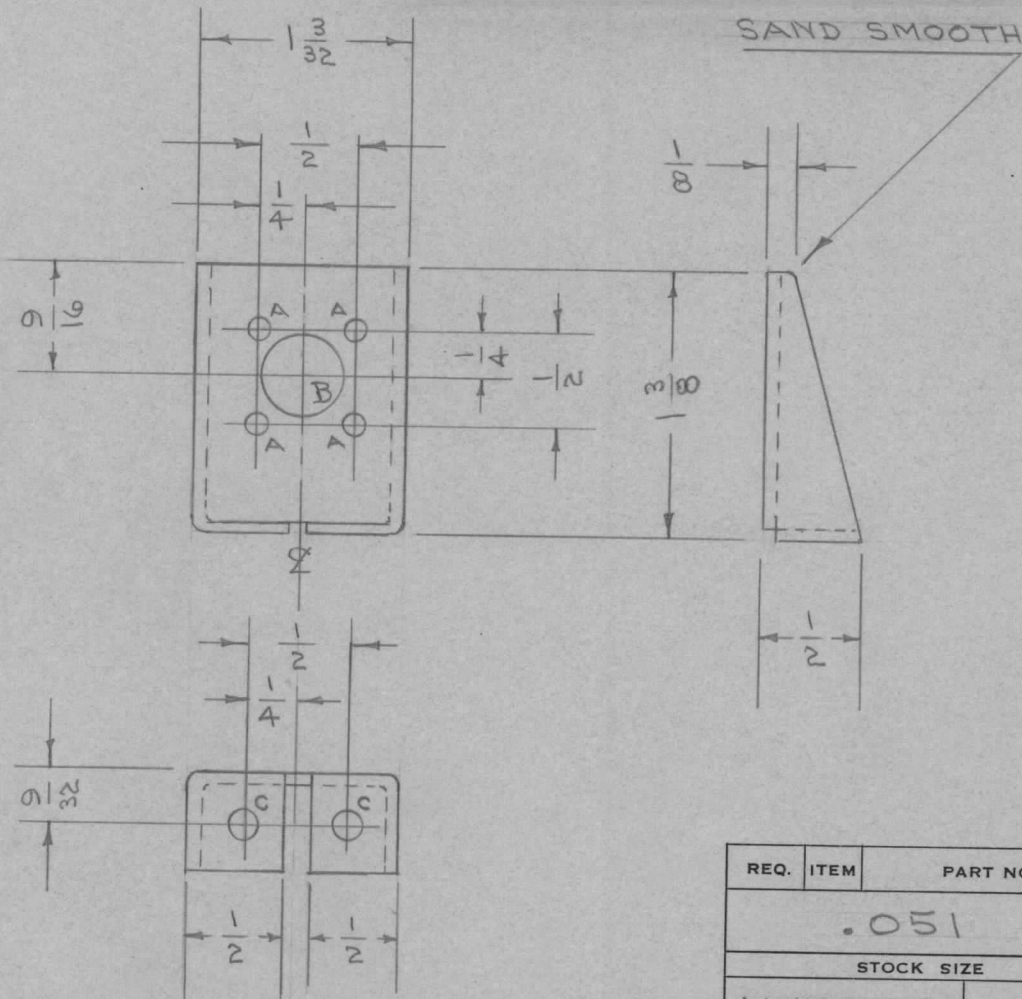
MAXIMUM ALLOWABLE TOLERANCES HAVE BEEN DETERMINED AND DEVIATIONS WILL BE CAUSE FOR REJECTION. REMOVE ALL BURRS AND SHARP EDGES

DECIMALS	FRACTIONS
.X ± .05	± 1/64
.XX ± .01	ANGLES ± 0° 30'
.XXX ± .005	

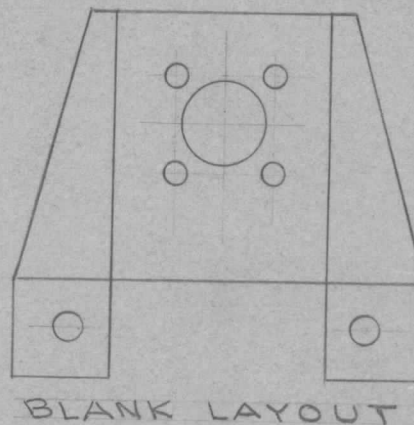
TOLERANCES

USED ON

MODEL	PROJECT NO.	ASS'Y. NO.	DATE
DMK-4	140	A-252	5-26-53



A - 1/8 (.125) D. 4 HOLES REQ.
 B - 7/16 (.437) D. 1 HOLE REQ.
 C - 5/32 (.156) D. 2 HOLES REQ.



REQ.	ITEM	PART NO.	DESCRIPTION	SYMBOL
		.051	THE TECHNICAL MATERIEL CORP. MAMARONECK, NEW YORK	
		STOCK SIZE		
		ALUMINUM	BRACKET	
		MATERIAL	REAR PANEL	
		WEIGHT PER PC.		
		52S-H32		
		TYPE & TEMPER	C.D.D. 5-26-53	
			DRAWN	ELEC. DES. APP. MECH. DES. APP.
			748	
		HEAT TREAT. SPEC.	CHECKED	FINAL APPROVAL
		S404-IRIDITE		
		FINISH & SPEC. NO.		

A	1	S404-IRIDITE WAS S101-CAUSTIC DIP	12-7 59	1001	P		EMN
ISSUE	ITEM	CHANGED FROM	DATE	CN. NO.	DRAFTS	CHECKER	ENG. APP.

TOLERANCES		SCALE	DRILL, PUNCH, COMMERCIAL STOCK SIZES AND MANUFACTURERS TOLERANCES ARE NOT INCLUDED.
ALL OTHERS	DEC. DIM. ± FRAC. DIM. ± ANGULAR DIM. ±	#	

MS-369 A