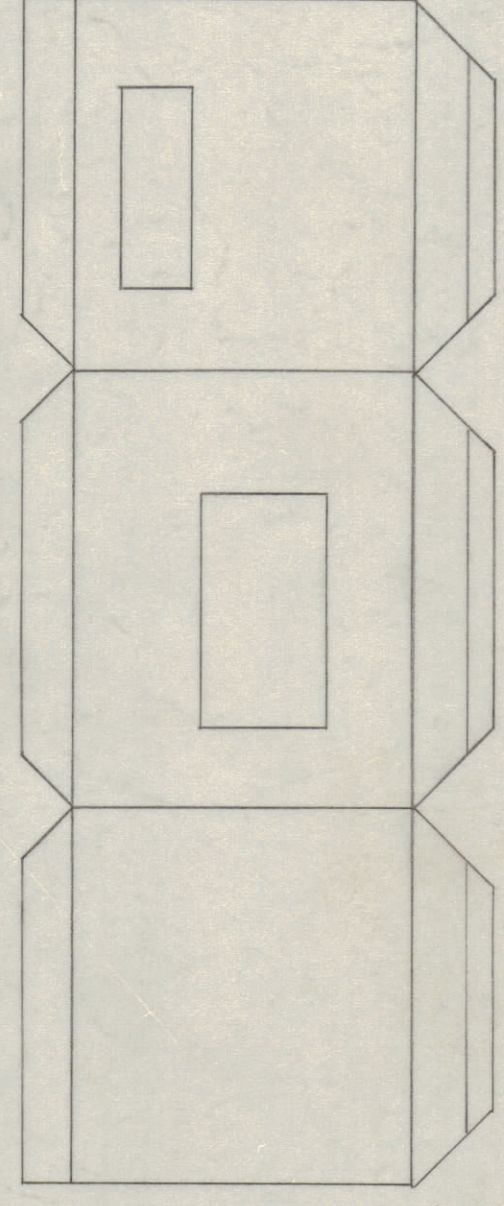
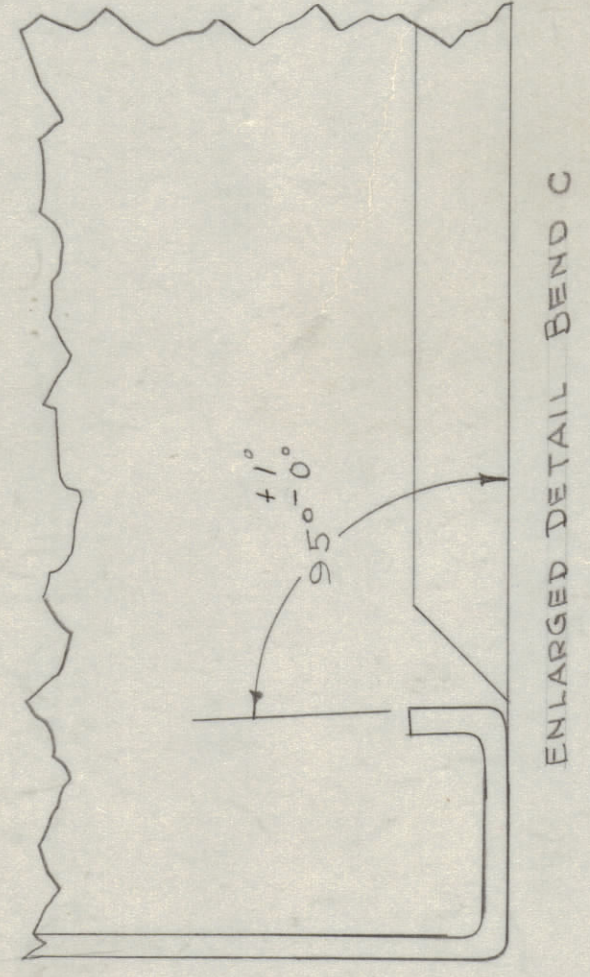


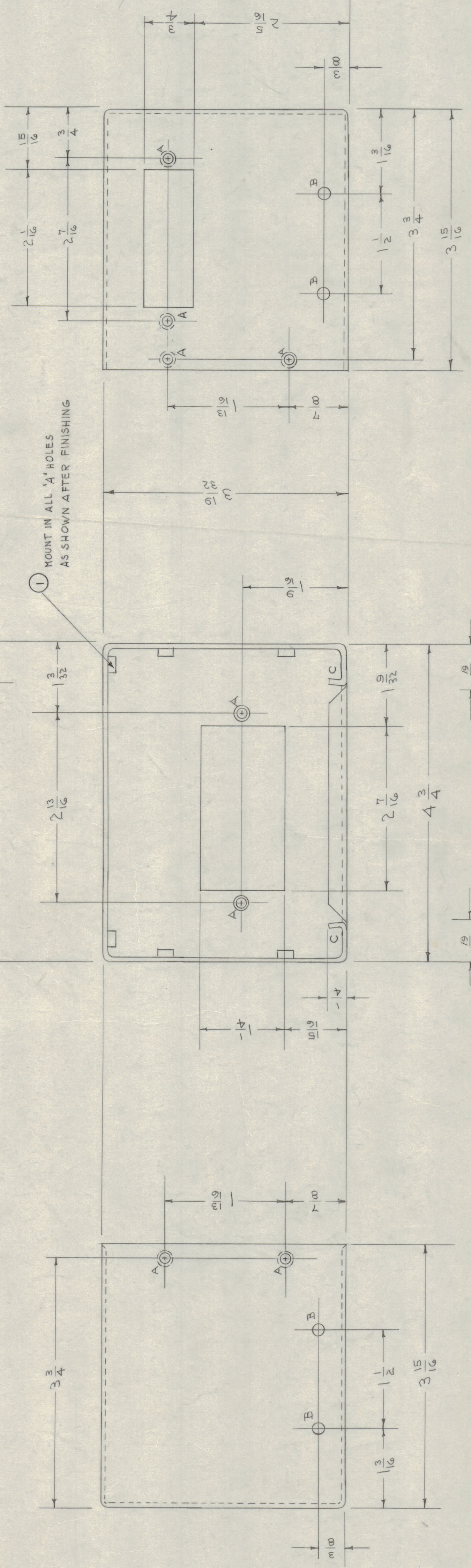
IF IT IS FOUND DESIRABLE TO CHANGE ANY TOLERANCE OR OTHER DETAIL SPECIFIED ON THIS DRAWING NOTIFY THE PURCHASER PROMPTLY. DIMENSIONS HAVE BEEN SET TO THE CLOSEST FEASIBLE PRACTICES HAVE BEEN SET. MINOR AND DEVIATIONS WILL BE CAUSE FOR REJECTION. REMOVE ALL BURRS AND SHARP EDGES.



BLANK LAYOUT



ENLARGED DETAIL BEND C



A - .164-.161 DIA. 12 HOLES REQ.
 B - 1/64 (.172) DIA. 4 HOLES REQ.
 ALL BENDS 90° EXCEPT AS SHOWN.
 ALL INSIDE RADI 1/16

REF: M3-339

REQ. ITEM	12	DESCRIPTION	NUT, ROUND SWAGE TYPE	SYMBOL	A
PART NO.	064	THE TECHNICAL MATERIEL CORP. MAMARONECK, NEW YORK			
STOCK SIZE	ALUMINUM	SHELLS XTAL OVEN			
MATERIAL	5052-H32	X F K			
TYPE & TEMPER		C.D.D. (MAY 53)			
HEAT TREAT SPEC.		DRAWN: H.B. CHECKED: H.B. ELEC. DES. APP. MECH. DES. APP.			
FINISH & SPEC. NO.	S-404 IRIDITE	FINAL APPROVAL: M3-340 F			

REV. NO.	1	MODEL	X F K	PROJECT NO.	A-600	DATE	11-10-53
UNIT				USED ON			

NOTICE TO PERSONS RECEIVING THIS DRAWING
 THE TECHNICAL MATERIEL CORPORATION claims proprietary right in the material described herein. This drawing and any copy thereof for engineering information and use only. It is reproduced or used by any manufacturer, merchant, or other person without permission from THE TECHNICAL MATERIEL CORPORATION to the user. This drawing is loaned for mutual assistance and is subject to recall at any time.
 Property of:
 THE TECHNICAL MATERIEL CORPORATION
 MAMARONECK, NEW YORK

ITEM	CHANGED FROM	DATE	BY	REASON
F	12 HOLES	5/27/53	R.W.	12 HOLES
E	8 HOLES	5/27/53	R.W.	8 HOLES
D	4 HOLES	5/27/53	R.W.	4 HOLES
C	12 HOLES	5/27/53	R.W.	12 HOLES