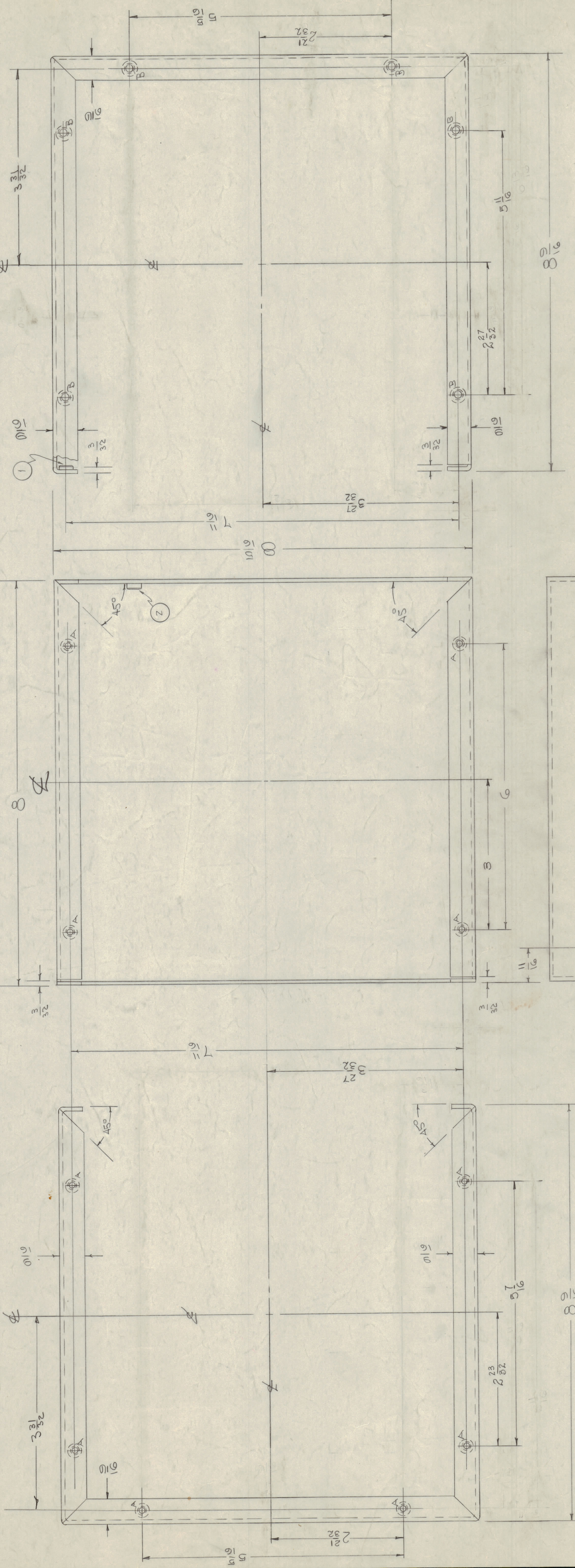


IF IT IS FOUND DESIRABLE TO CHANGE ANY TOLERANCE OR OTHER DETAILS SHOWN ON THIS DRAWING NOTIFY THE TECHNICAL MATERIEL CORPORATION IMMEDIATELY. MAXIMUM ALLOWABLE TOLERANCES HAVE BEEN DETERMINED AND DEVIATIONS WILL BE CAUSE FOR REJECTION. REMOVE ALL BURRS AND SHARP EDGES.

- A - .191 MIN., .194 MAX. DIA.'S FOR NT129-632-4
- B - .221 MIN., .224 MAX. DIA.'S FOR NT129-832-4
- C - 3/8 (375) DIA

- 10 REQ.
- 6 REQ.
- 2 REQ.



MS-333 F

PROPERTY RECEIVING THIS DRAWING THE TECHNICAL MATERIEL CORPORATION claims copyright in the material disclosed herein. This drawing is issued in confidence for engineering information only and may not be reproduced or used to manufacture anything shown herein without permission from THE TECHNICAL MATERIEL CORPORATION to the user. This drawing is loaned for mutual assistance and is subject to recall at any time.

Property of:
THE TECHNICAL MATERIEL CORPORATION
MAMARONECK, NEW YORK

6	2	NT129-832-4	NUT, ROUND, SWAGE TYPE	B
10	1	NT129-632-4	NUT, ROUND, SWAGE TYPE	A
REQ. ITEM		PART NO.	DESCRIPTION	SYMBOL
STOCK SIZE		.064	THE TECHNICAL MATERIEL CORP. MAMARONECK, NEW YORK	
MATERIAL		ALUMINUM	INNER OVEN SHELL	
WEIGHT PER FC		5052 H32	ONEH ASSY.	
TYPE & TEMPER		055 9M116	DRAWN	
HEAT TREAT SPEC.		T-19-S4	ELEC. DES. APP.	
FINISH & SPEC. NO.		5-404 IRDITE	MECH. DES. APP.	
PROJECT NO.		104	CHECKED	
ABSTY. NO.		A-631	FINAL APPROVAL	
MODEL		104	MS-333	
USED ON			F	

1	RTF-2	11-11-58		
1	RTF	2-1-58		
1	VOX-2	1-8-58	291	
1	VOX-1	1-19-58	291	
1	PHO-2	7-19-54		
1	PHO-1	7-19-54		
1	VOX	3-18-54		
REQ. PER UNIT	MODEL	PROJECT NO.	ABSTY. NO.	DATE
		104	A-631	3-18-54

F	Z	15 Holes were 11/64 DIA. 97	2897 JCB
F	1	A Holes were No 36 Drill	
F	1	5-4X IRDITE WAS	4/15/1001 AB
F	1	S-21 CALUSTIC GIP	
F	D	REDIMENSIONED, CHANGE	
F	+	RESPONSIBILITY NO. CHG.	
ISSUE ITEM	CHANGED FROM	DATE	CH. NO. (DRAFTS CHECKER) ENG. APP.
TOLERANCES			
SCALE:			
DRILL PUNCH COMMERCIAL STOCK SIZES AND MANUFACTURERS TOLERANCES ARE NOT INCLUDED.			
ALL DEC. DIM. ± .004			
OTHERS ANGULAR DIM. ± .1			