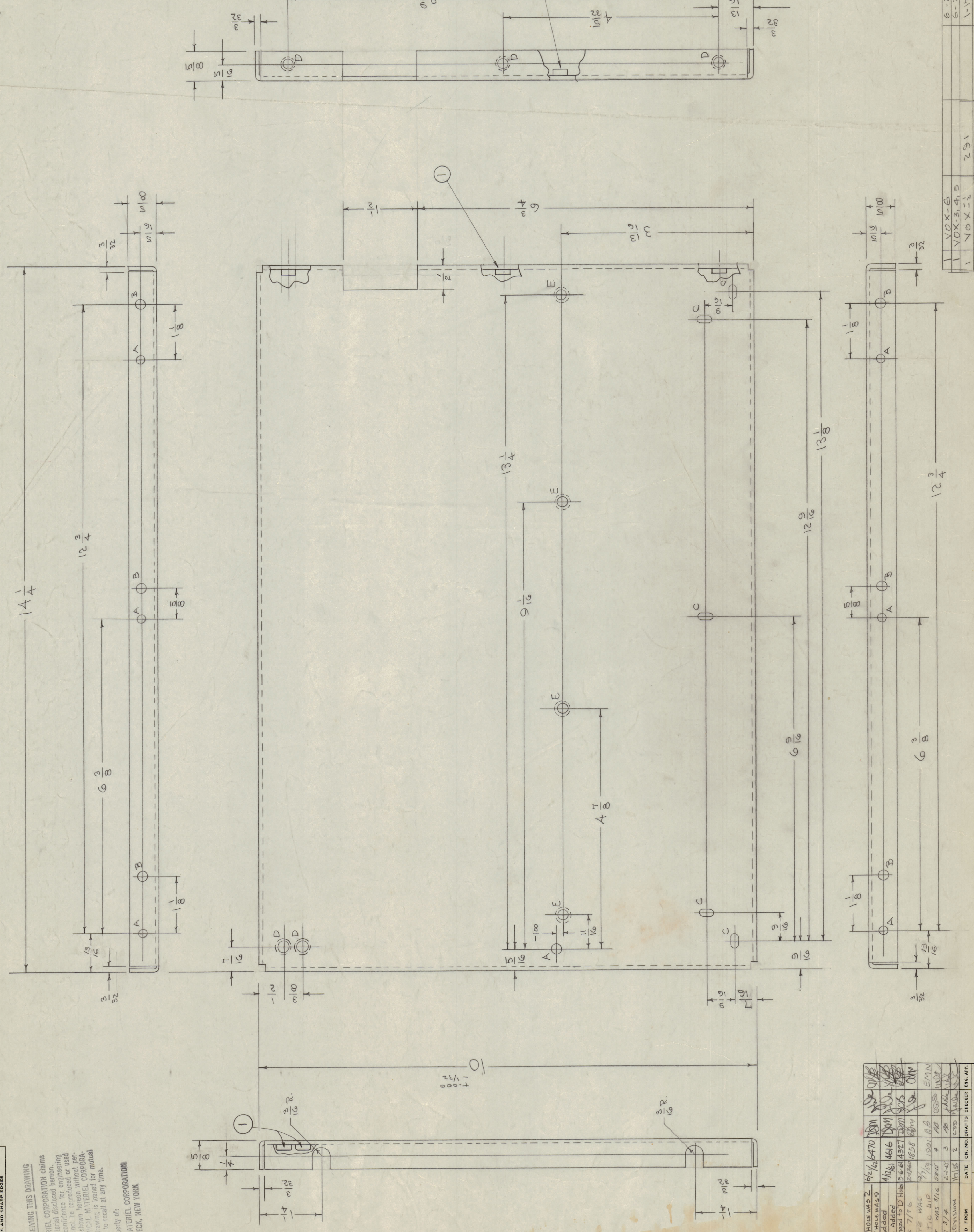


- 7 HOLES REQ.
- A - 3/64 (.203) D.
- B - 1/32 (.218) D.
- C - 5/32 x 5/16 SLOTS
- D - .221 ±.004 DIA
- E - .191 DIA.



NOTES  
MOUNT INSERTS AFTER FINISHING  
USE MATERIAL THICKNESS FOR  
MAX. RADIUS ON ALL BENDS

REQ. ITEM	PART NO.	DESCRIPTION	SYMBOL
4	NT129-632-4	NUT, ROUND, SWAGE TYPE	
5	NT129-832-4	NUT, ROUND, SWAGE TYPE	

STOCK SIZE	WEIGHT PER FT.
.081	

MATERIAL	TYPE & TEMPER
ALUMINUM	325 H 32

HEAT TREAT SPEC.	FINISH & SPEC. NO.
	MS-330

REV.	DATE	DESCRIPTION
1	6-21-62	VOK-26
1	6-21-62	VOK-34.5
1	1-11-55	VOK-2
1	1-11-55	VOK

ISSUE ITEM	CHANGED FROM	DATE	ENGR. APP.
J	2	6/21/64	WAS 2
H	2	4/12/64	WAS 2
G	1	5-6-64	WAS 2
F	1	2-26-64	WAS 2
E	1	9/15/63	WAS 2
D	1	5-10-61	WAS 2
C	1	1/2 CUT OUT	WAS 2
B	1	3/25 WAS 3	WAS 2
A	1	COMPLETE REVISION	WAS 2

DEC. DIM.	ANGULAR DIM.
±.004	±.004

DRILL PUNCH, COMMERCIAL STOCK	TOLERANCES ARE NOT INCLUDED.

IT IS THE BUYER'S RESPONSIBILITY TO CHANGE ANY TOLERANCE OR OTHER DETAIL SPECIFIED ON THIS DRAWING NOTIFY THE PURCHASER PROMPTLY.  
MAXIMUM ALLOWABLE TOLERANCES HAVE BEEN DETERMINED AND SHOWN ON THIS DRAWING.  
REMOVE ALL BURRS AND SHARP EDGES

PROPERTY OF:  
THE TECHNICAL MATERIEL CORPORATION  
MAMARONECK, NEW YORK