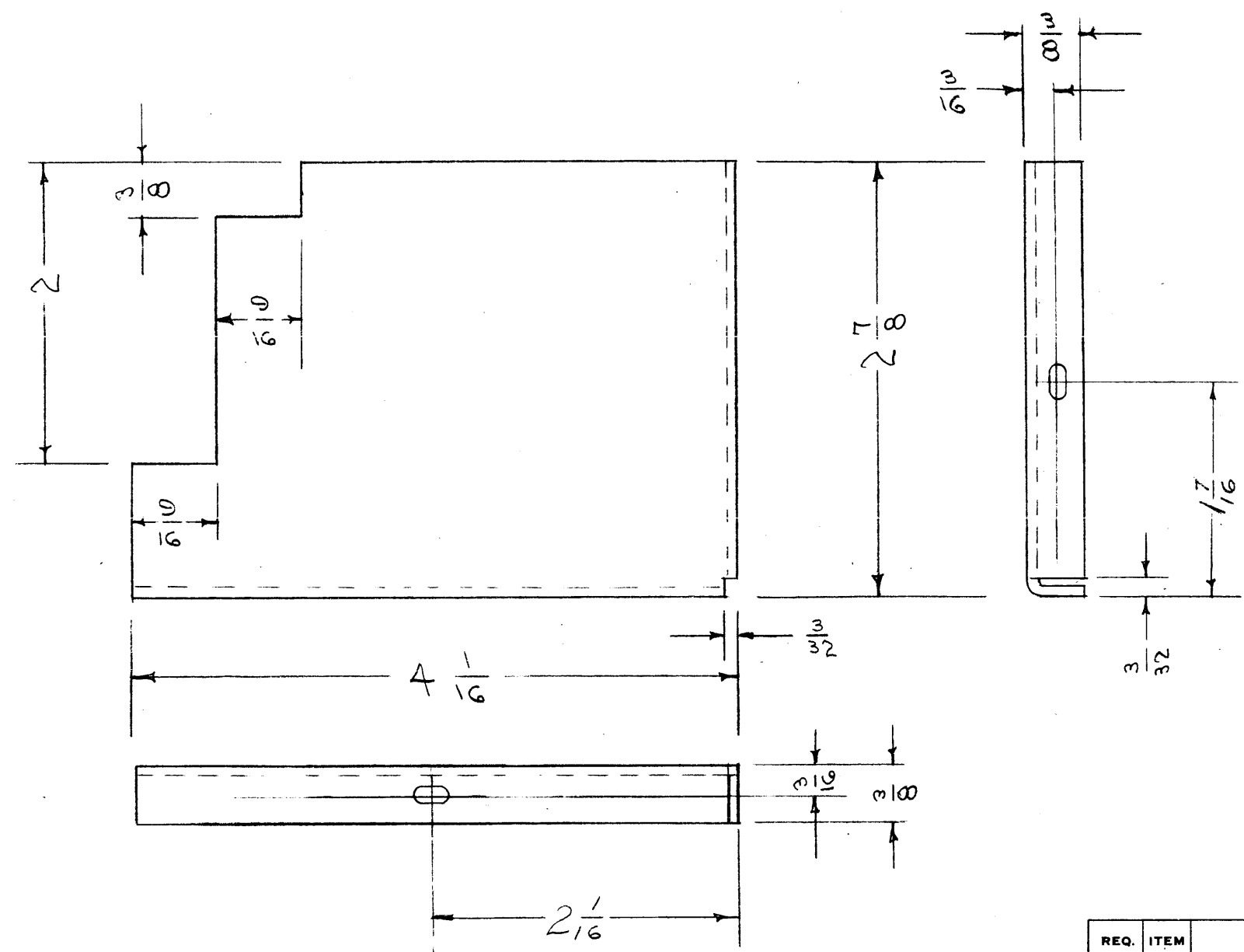


IF IT IS FOUND DESIRABLE TO CHANGE ANY TOLERANCE OR OTHER DETAIL SPECIFIED ON THIS DRAWING NOTIFY THE PURCHASER PROMPTLY.

MAXIMUM ALLOWABLE TOLERANCES HAVE BEEN DETERMINED AND DEVIATIONS WILL BE CAUSE FOR REJECTION. REMOVE ALL BURRS AND SHARP EDGES

MS-300 E

1/8 X 1/4 SLOTS 2 REQ.



NOTICE TO PERSONS RECEIVING THIS DRAWING

THE TECHNICAL MATERIEL CORPORATION claims proprietary right in the material disclosed hereon. This drawing is issued in confidence for engineering information only and may not be reproduced or used to manufacture anything shown hereon without permission from THE TECHNICAL MATERIEL CORPORATION to the user. This drawing is loaned for mutual assistance and is subject to recall at any time.

Property of:  
THE TECHNICAL MATERIEL CORPORATION  
MAMARONECK, NEW YORK

ISSUE	ITEM	CHANGED FROM	DATE	CN. NO.	DRAFTS	CHECKER	ENG. APP.
E	1	S-404 WAS S-101	7/4/59	1001	MB		EMN
D	1	HOLES WERE 5/32 D. 5 PER UNIT 4-4-55		2	PB.	JAD	WDC
C	1	COMPLETE REVISION	1/18/55	1	EGD	JAD	WDC

TOLERANCES		SCALE:
ALL OTHERS	DEC. DIM. ± FRAC. DIM. ± 1/64 ANGULAR DIM. ±	DRILL, PUNCH, COMMERCIAL STOCK SIZES AND MANUFACTURERS TOLERANCES ARE NOT INCLUDED.

REQ. PER UNIT	MODEL	PROJECT NO.	ASS'Y. NO.	DATE
1	VOX-2	291		1-18-55
1	VOX		A-629	1-18-55

REQ.	ITEM	PART NO.	DESCRIPTION	SYMBOL
		.051	THE TECHNICAL MATERIEL CORP. MAMARONECK, NEW YORK	
		STOCK SIZE		
	ALUMINUM		SHIELD COVER, P. S.	
	MATERIAL	WEIGHT PER PC.		
	528 H32			
	TYPE & TEMPER			
			DRW. 1-18-55	
	HEAT TREAT. SPEC.		DRAWN	ELEC. DES. APP.
			JAD	WDC
	FINISH & SPEC. NO.		CHECKED	FINAL APPROVAL
				MS-300 E