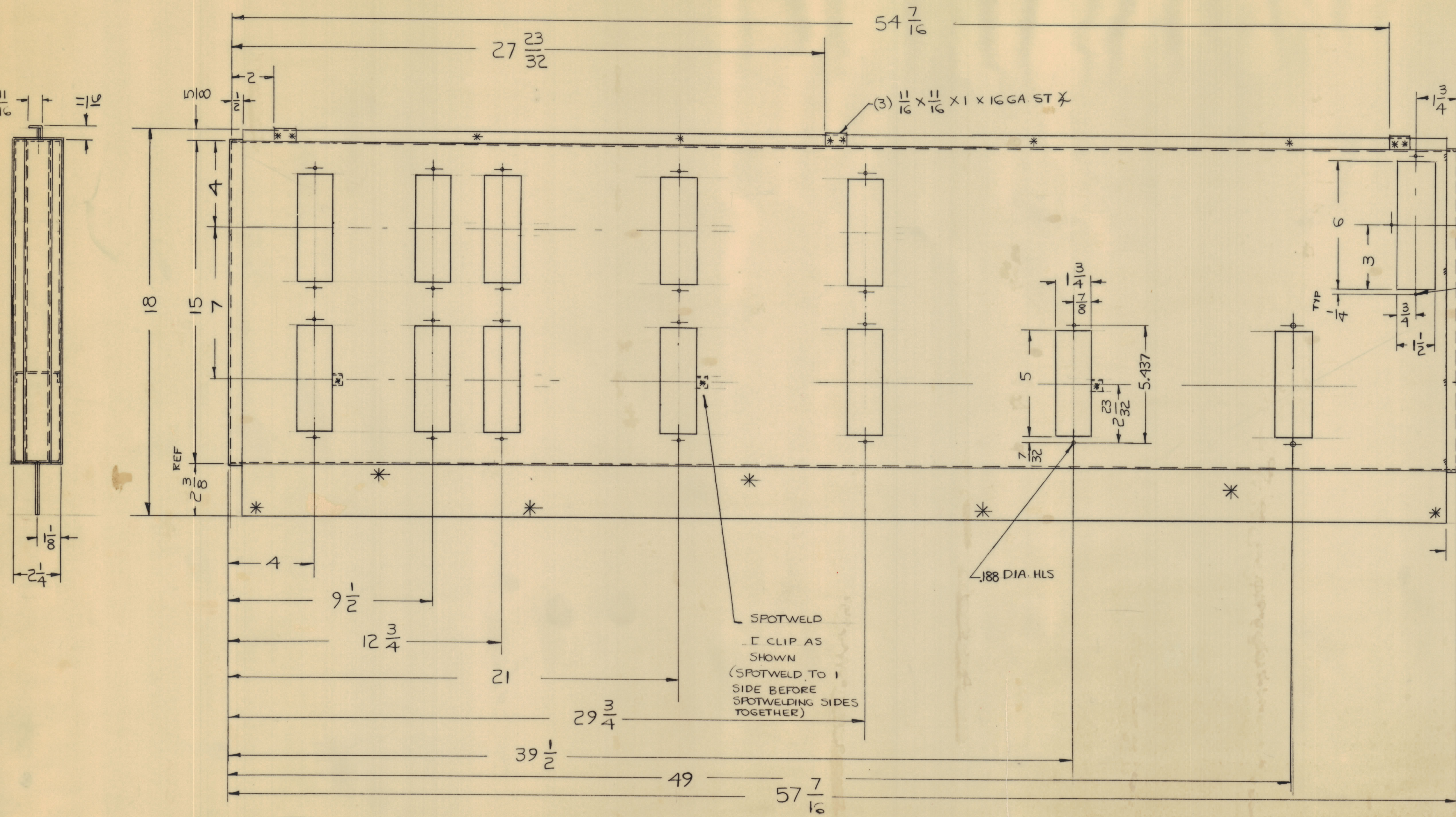


REVISIONS						
ZONE	SYM	DESCRIPTION	DATE	E.M.N. NO.	DRAFT	CHKD
X		EXPER. RELEASE	3-2-64	1		
O		ORIGINAL RELEASE FOR PRODUCTION	5-28-64	0	A.M.	



(3) #10 (.193) DIA. HL.
INSTALL WELD NUTS (PEM # WN 632)

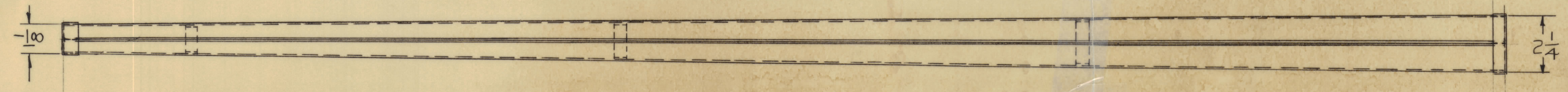
4 SMALL TACKS
EACH SIDE TOP & BOTTOM

SPOTWELD
I CLIP AS
SHOWN
(SPOTWELD TO 1
SIDE BEFORE
SPOTWELDING SIDES
TOGETHER)

NOTES

- 1) PART TO BE FREE OF BURRS & SHARP EDGES.
- 2) PART MUST BE STRAIGHT AFTER SPOTWELDING 2 SECTIONS TOGETHER

MS 3093 0



REF: MS 3081 (8)

REQ'D.	ITEM	PART NUMBER	DESCRIPTION	SYMBOL
KRUJ LIST OF MATERIAL				
MATERIAL			THE TECHNICAL MATERIEL CORP. MAMARONECK, NEW YORK	
FINISH			TITLE DUCT, AIR, CENTER	
UNLESS OTHERWISE SPECIFIED DIMENSIONS ARE IN INCHES AND INCLUDE CHEMICALLY APPLIED OR PLATED FINISHES		DRAWN <i>R. P. Jones</i>	DATE 3-2-64	FINAL APPROVAL <i>R. P. Jones</i>
TOLERANCES		MECH. DES. <i>TRK</i>	DATE 4-27-64	DATE
THE CONTENTS OF THIS DRAWING ARE THE EXCLUSIVE PROPERTY OF THE TECHNICAL MATERIEL CORP. ITS UNAUTHORIZED USE OR REPRODUCTION IN WHOLE OR IN PART IS STRICTLY FORBIDDEN.		SHEET MS 3093 0		REV. LTR. 0

NOTES