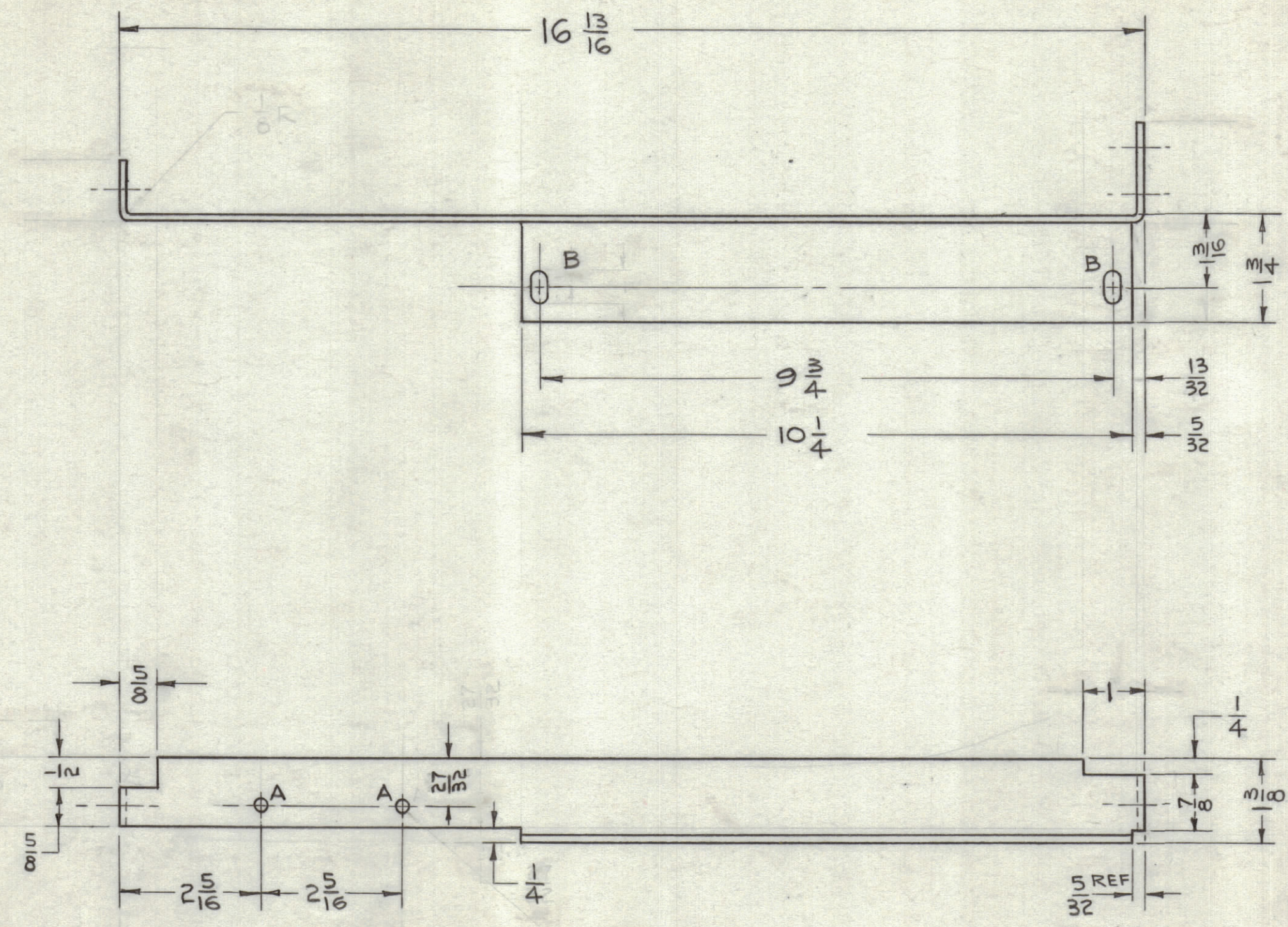


REVISIONS					
ZONE	SYM	DESCRIPTION	DATE	E.M.N. NO.	APPD

NOTICE TO PERSONS RECEIVING THIS DRAWING

THE TECHNICAL MATERIEL CORPORATION claims proprietary right in the material disclosed herein. This drawing is issued in confidence for engineering information only and may not be reproduced or used to manufacture anything shown hereon without permission from THE TECHNICAL MATERIEL CORPORATION to the user. This drawing is loaned for mutual assistance and is subject to recall at any time.

Property of:
THE TECHNICAL MATERIEL CORPORATION
MAMARONECK, NEW YORK



HOLE	DESCRIPTION	REQ'D
A	5/32 DIA	5
B	5/32 x 1/2 SLOT	2

USE MATERIAL THICKNESS FOR MAX. RADIUS ON ALL BENDS UNLESS OTHERWISE SPECIFIED

5 DIA 5 HOLES

MS-3076

REQ'D.	ITEM	PART NUMBER	DESCRIPTION	SYMBOL
KRUY LIST OF MATERIAL				
MATERIAL		THE TECHNICAL MATERIEL CORP. MAMARONECK, NEW YORK		
FINISH		TITLE		
1/8 THK ALUM. 3052 - H32		BRACKET, SUPPORT		
YEL. IRIDITE 3-404		DRAWN <i>JAK</i> DATE 1-5-63		
UNLESS OTHERWISE SPECIFIED DIMENSIONS ARE IN INCHES AND INCLUDE CHEMICALLY APPLIED OR PLATED FINISHES		CHECKED <i>JAK</i> DATE 1-7-63		
DECIMALS .X ± .05 .XX ± .01 .XXX ± .005		ELECT. DES. DATE		
FRACTIONS ± 1/64 ANGLES ± 0° 30'		MECH. DES. DATE 1-7-63		
TOLERANCES		SHEET MS-3076		
		REV. LTR.		

Q'TY./UNIT	MODEL USED ON	ASS'Y. NO.
1	HFR-1	
SCALE	CODE	
NO SCALE		

NOTES

THE CONTENTS OF THIS DRAWING ARE THE EXCLUSIVE PROPERTY OF THE TECHNICAL MATERIEL CORP. ITS UNAUTHORIZED USE OR REPRODUCTION IN WHOLE OR IN PART IS STRICTLY FORBIDDEN.