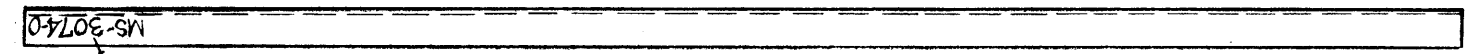
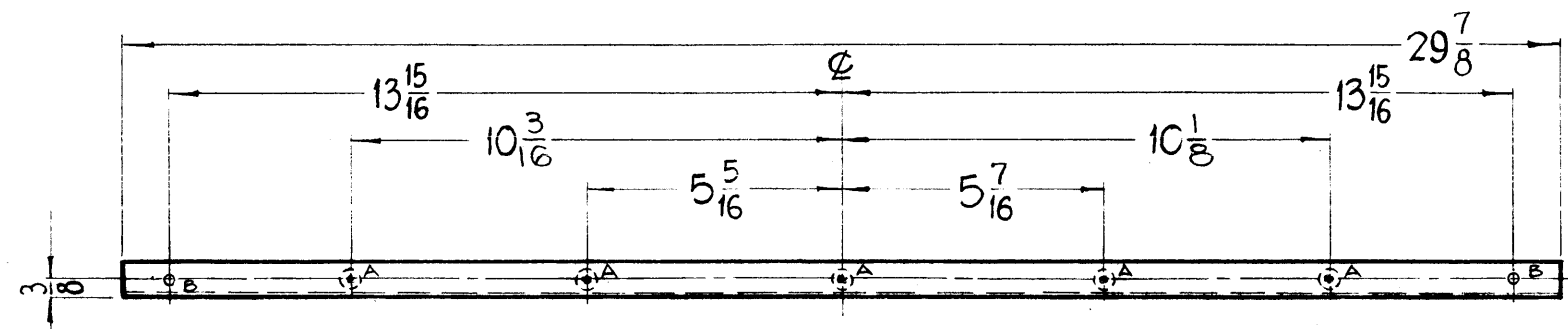


MS-3074-0

REVISIONS

SYM	DESCRIPTION	DATE	E.M.N. NO.	DRAFT	CHKD	APPD
0	ORIGINAL RELEASE FOR PRODUCTION	3-26-64		A.M.		



METAL STAMP TMC NO. MS-3074-0  
1/8 GOTHIC.



**HOLES —**

A - .253 MAX., .250 MIN. DIA'S. FOR \_\_\_\_\_ 5 REQ.  
MTG. NT-129-1032-6

B - 15/64 (.234) DIA. \_\_\_\_\_ 2 REQ

REQ'D.	ITEM	PART NUMBER	DESCRIPTION	SYMBOL
5	1	NT-129-1032-6	NUT, ROUND, SWAGE TYPE	A

F. BUDETTI LIST OF MATERIAL

MATERIAL	3/4 X 3/4 X 1/8 THICK ALUMINUM, 6061-T-6	THE TECHNICAL MATERIEL CORP. MAMARONECK, NEW YORK
FINISH	S-404-IDIDITE	TITLE
		STIFFENER, BOTTOM

MOUNT INSERTS AFTER FINISHING.

1	GPT-200K	AX-398
Q'TY./UNIT	MODEL USED ON	ASS'Y. NO.
SCALE	CODE	
#	A	

UNLESS OTHERWISE SPECIFIED DIMENSIONS ARE IN INCHES AND INCLUDE CHEMICALLY APPLIED OR PLATED FINISHES		DRAWN	DATE	FINAL APPROVAL	DATE
		John C. Biele	1-2-63	<i>RW</i>	
		CHECKED	DATE		
		<i>ACB</i>	2/10/64		
		ELECT	DATE		
		<i>CBH</i>	2/10/64		
		MECH. DES	DATE		
		<i>WJC</i>	2/13/64		
DECIMALS	FRACTI NS	MS-3074		0	
.X ± .05	± 1/64				
.XX ± .01	ANGLES				
.XXX ± .005	± 0° 30'				
		SHEET			REV. LTR.

NOTES

THE CONTENTS OF THIS DRAWING ARE THE EXCLUSIVE PROPERTY OF THE TECHNICAL MATERIEL CORP. ITS UNAUTHORIZED USE OR REPRODUCTION IN WHOLE OR IN PART IS STRICTLY FORBIDDEN.