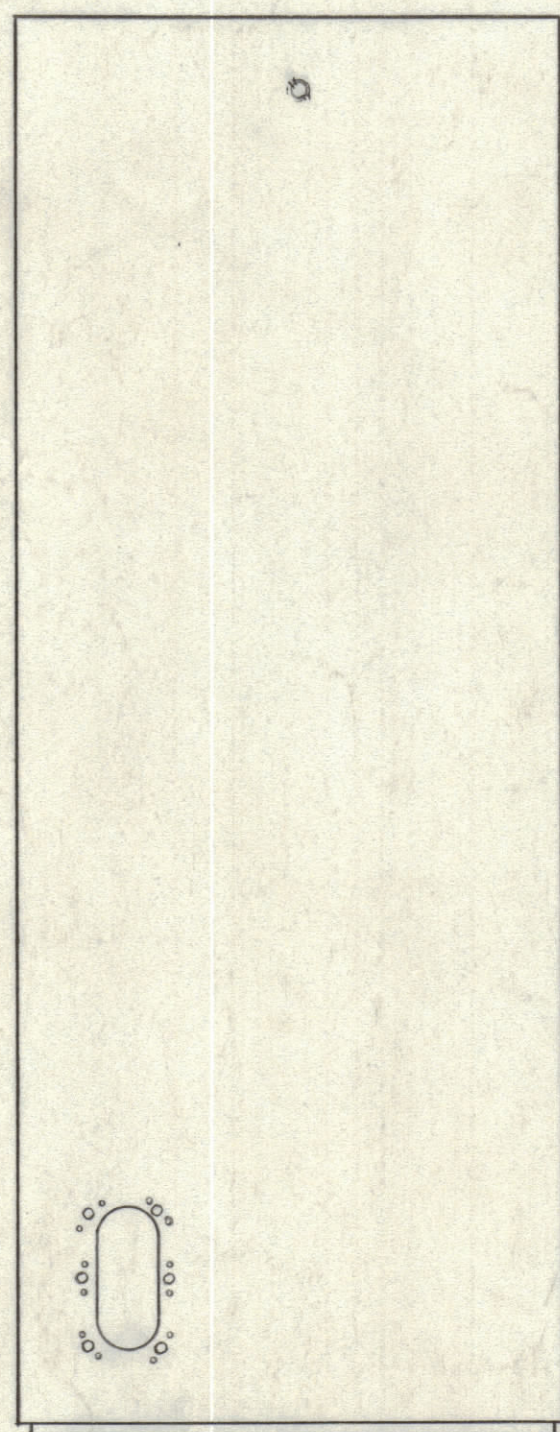


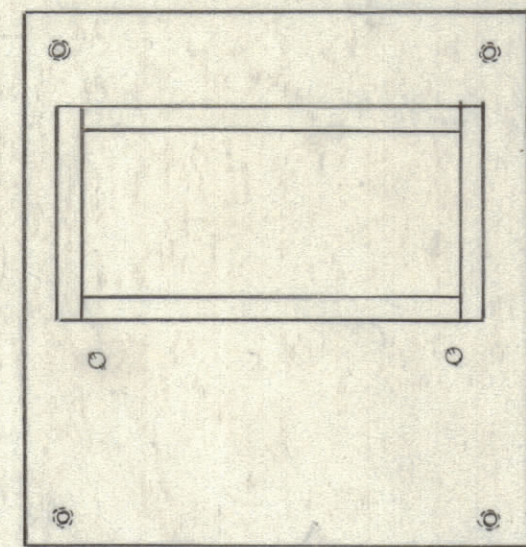
REVISIONS						
ZONE	SYM	DESCRIPTION	DATE	E.M.N. NO.	DRAFT	CHKD
E4	A	2-3/4" B" LOCATION DIMENSION WAS 2-1/2"	11/8/66	17285	WPC	9/21/66

NOTICE TO PERSONS RECEIVING THIS DRAWING
 THE TECHNICAL MATERIEL CORPORATION claims proprietary right in the material disclosed hereon. This drawing is issued in confidence for engineering information only and may not be reproduced or used to manufacture anything shown hereon without permission from THE TECHNICAL MATERIEL CORPORATION to the user. This drawing is loaned for mutual assistance and is subject to recall at any time.
 Property of:
 THE TECHNICAL MATERIEL CORPORATION
 MAMARONECK, NEW YORK

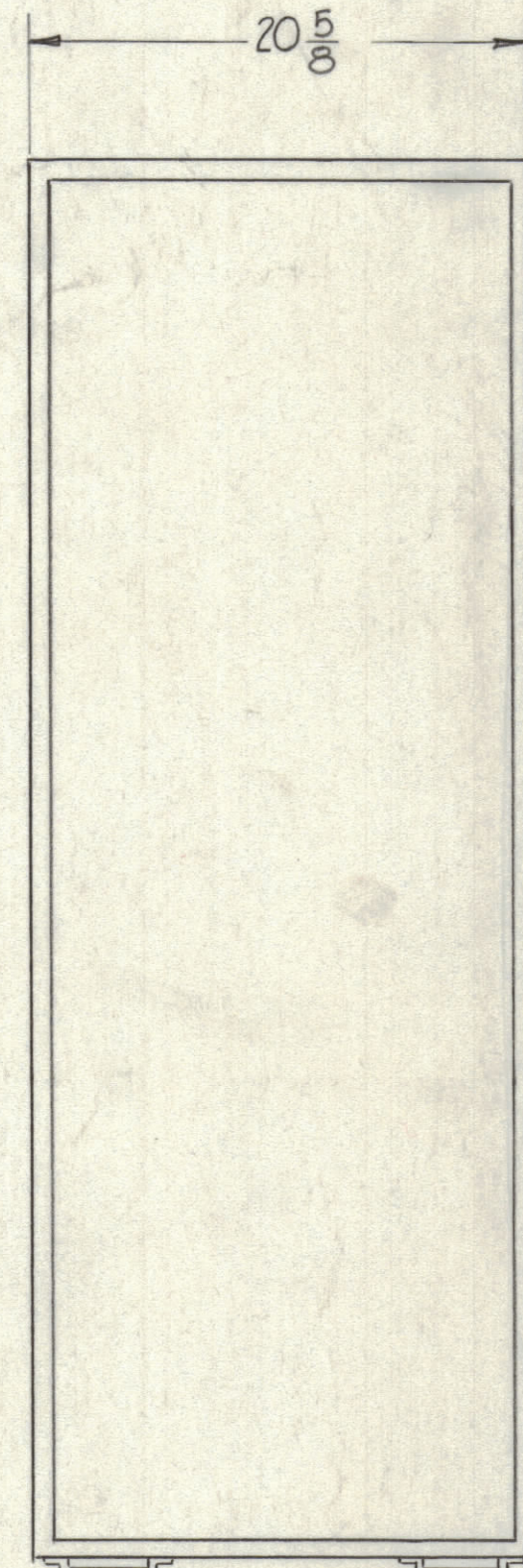
HOLES ~ REQ'D
 A ~ 13/64 DIA. (.203) 4
 B ~ 1/4 DIA. (.25) 4



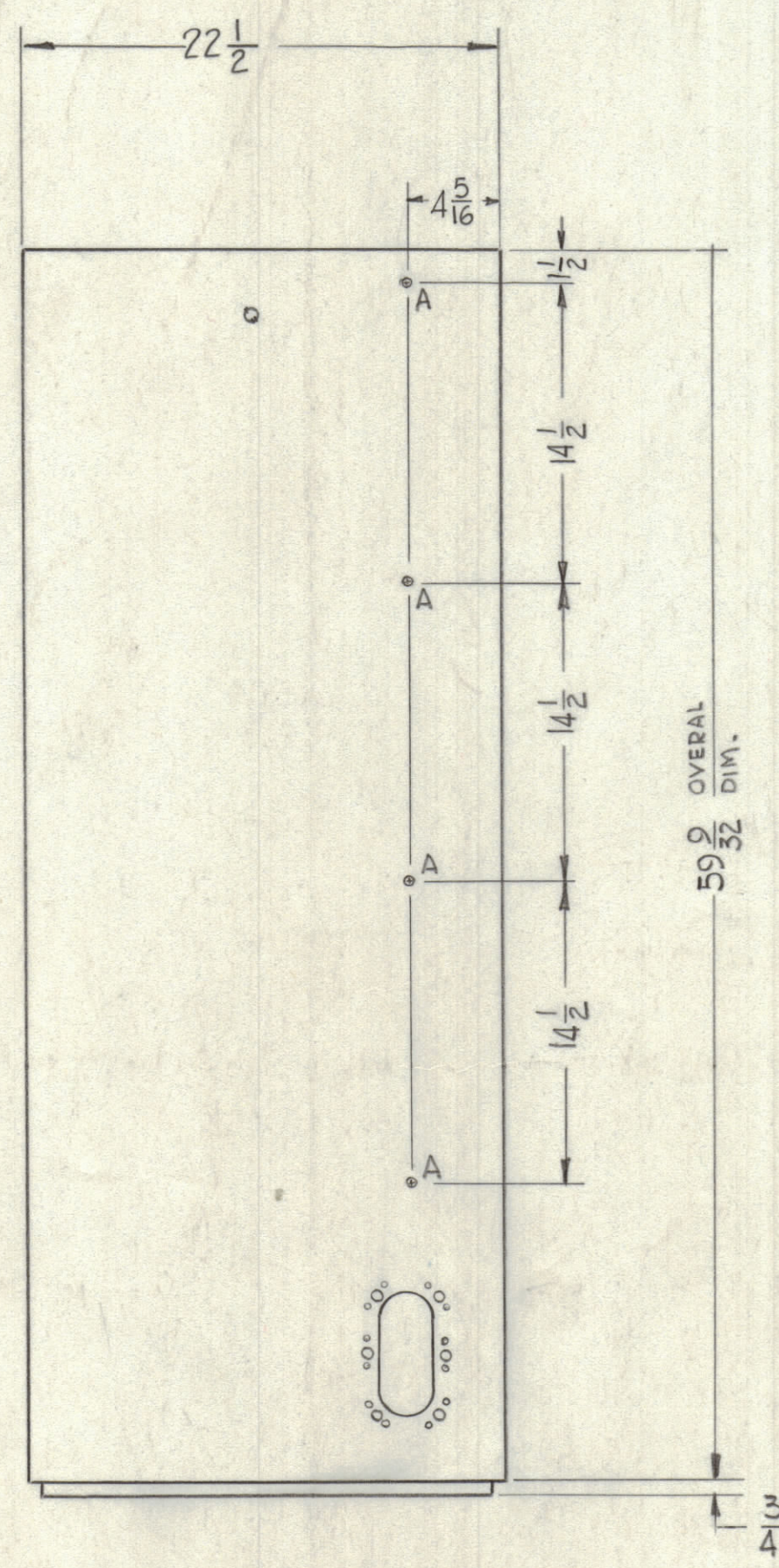
LEFT SIDE



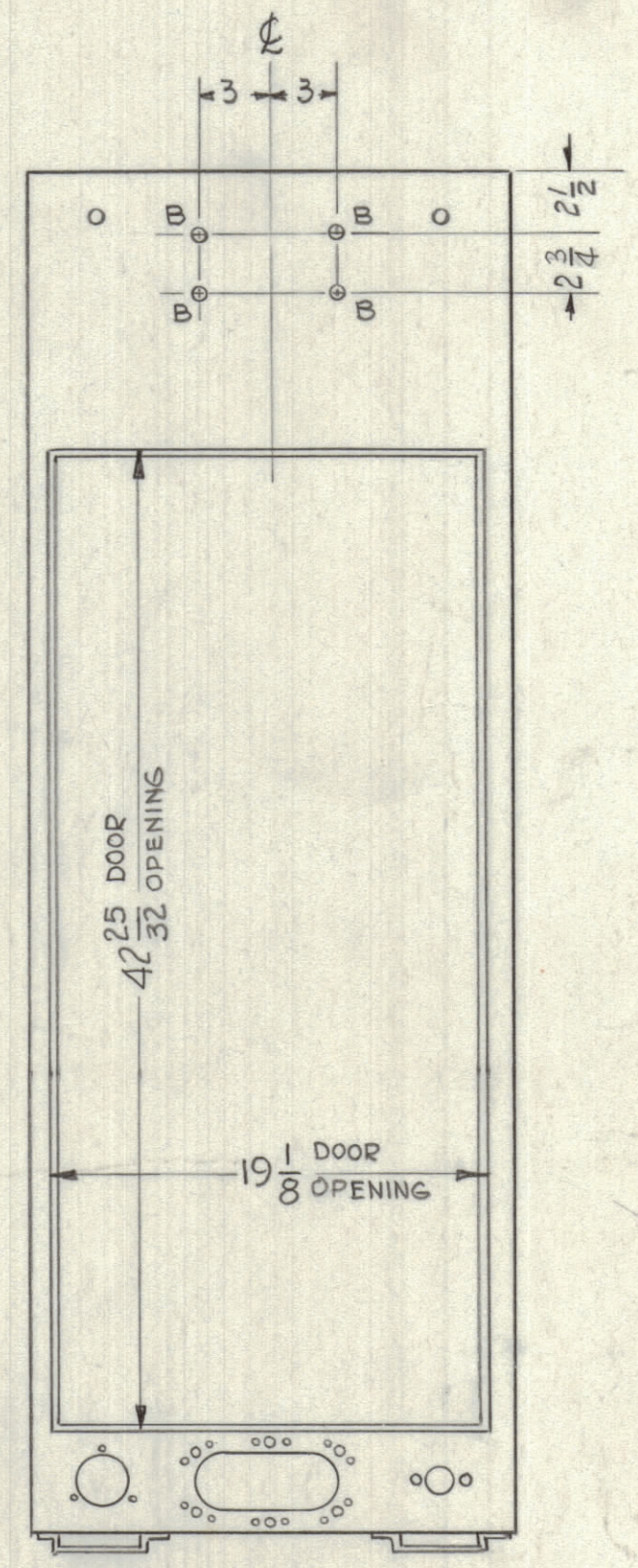
TOP



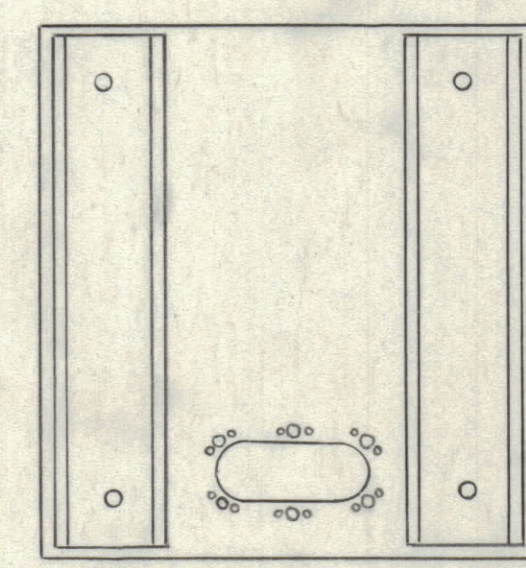
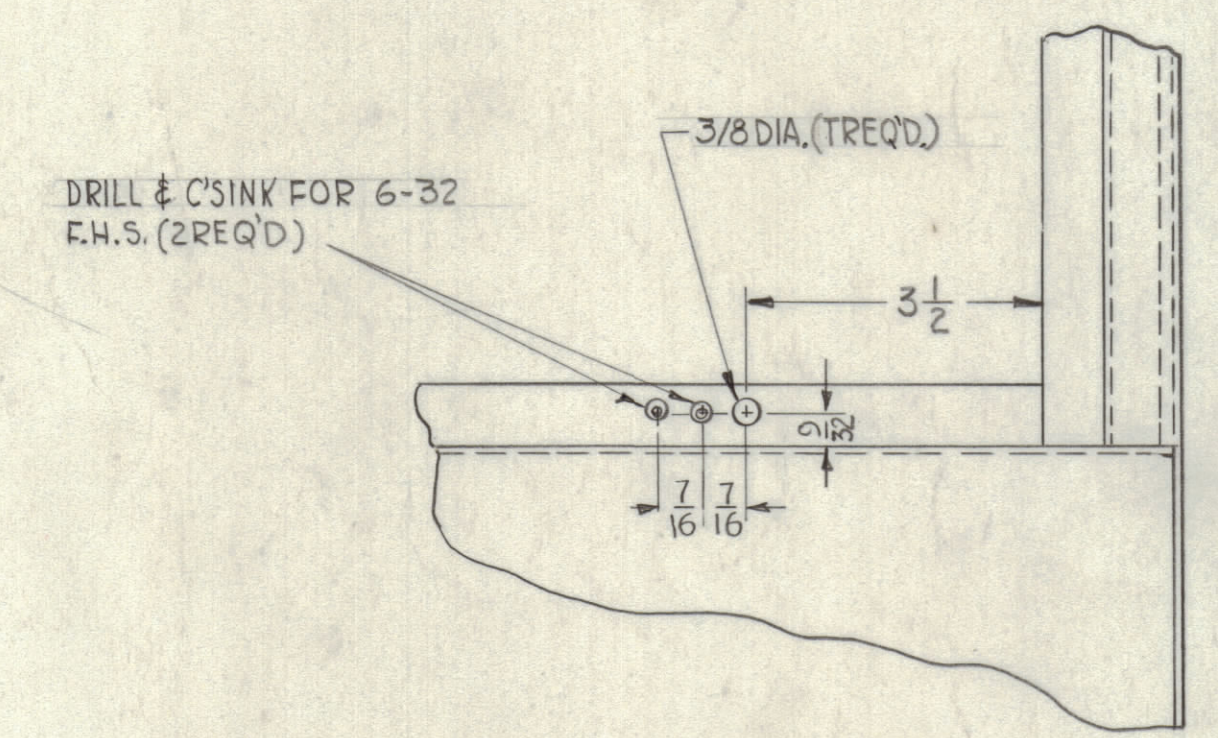
FRONT



RIGHT SIDE



REAR



BOTTOM

NOTES

QTY./UNIT	MODEL USED ON	ASSY. NO.
SCALE	CODE	

REF.~BASIC RACK MS-2509-1		REF.~ REAR DOOR - MS-2516(BL-106-2)	
STRUMER LIST OF MATERIAL			
MATERIAL		THE TECHNICAL MATERIEL CORP. MAMARONECK, NEW YORK	
FINISH		TITLE CABINET, ELECTRICAL EQUIP.	
UNLESS OTHERWISE SPECIFIED DIMENSIONS ARE IN INCHES AND INCLUDE CHEMICALLY APPLIED OR PLATED FINISHES	DRAWN GDL	DATE 1-3-68	FINAL APPROVAL
DECIMALS .X ± .05 .XX ± .01 .XXX ± .005	CHECKED HPC	DATE 1-4-68	18P
FRACTIONS 1/64 ANGLES ± 0° 30'	ELECT. DES. JPR	DATE 1-5-68	MS-3072 A
	MECH. DES. JPR	DATE	SHEET

MS-3072 A