

THE CONTENTS OF THIS DRAWING ARE THE EXCLUSIVE PROPERTY OF THE TECHNICAL MATERIEL CORP. ITS UNAUTHORIZED USE OR REPRODUCTION IN WHOLE OR IN PART IS STRICTLY FORBIDDEN.

REQ. PER UNIT

2

USED ON

MODEL

GPT-200K

ASS'Y. NO.

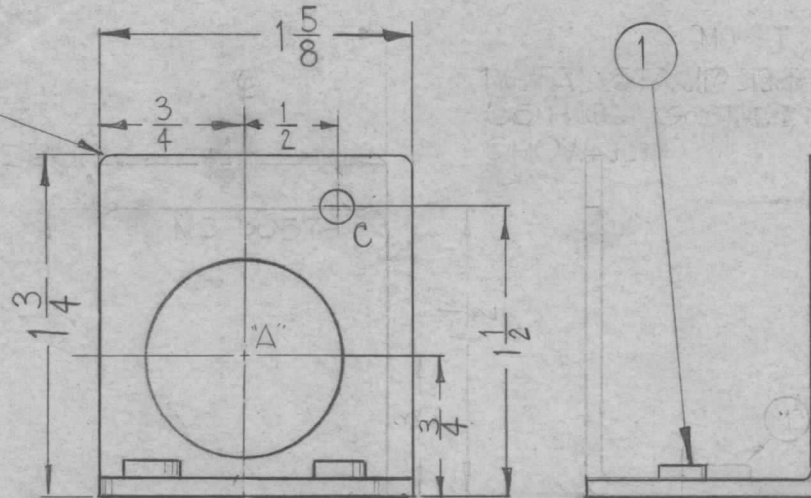
AP-110

DATE

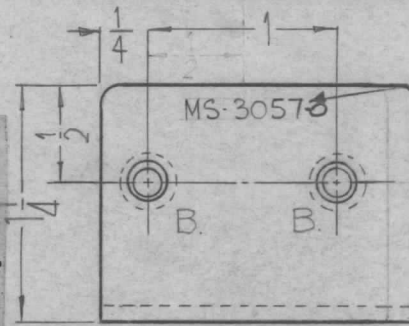
MS-3057



ROUND ALL CORNERS



METAL STAMP TMC PART NO. 1/8 HIGH GOTHIC.



HOLES

A - 1-1/16 DIA. (1) REQ.

B - 19/104 DIA. (2) REQ.

C - 11/64 DIA. (1) REQ.

REF: LD-1219, 1220 (1)

UNLESS OTHERWISE SPECIFIED:

1. USE MATERIAL THICKNESS FOR MAXIMUM RADIUS ON ALL BENDS.
2. ALL ANGULAR BENDS 90°.
3. REMOVE ALL BURRS AND SHARP EDGES.
4. MOUNT INSERTS AFTER FINISHING.

2	1	NT-129-6-32-4	NUT, ROUND SWAGE TYPE	B
REQ.	ITEM	PART NO.	F. BUDETTI DESCRIPTION	SYMBOL
.093			THE TECHNICAL MATERIEL CORP.	
STOCK SIZE			MAMARONECK, NEW YORK	
ALUMINUM			BRACKET, MTG., INCAN. LAMP	
MATERIAL				
5052-H32	H-3	J.F.V.	QCS	RDC
TYPE & TEMPER	HEAT TREAT. SPEC.	DRAWN	CHECKED	FINAL APPROVAL
S404 IRIDITE		Q.B.P.	2/1/64	MS-3057
FINISH & SPEC. NO.		ELEC. DES. APP.	MECH. DES. APP.	

ORIGINAL RELEASE FOR PRODUCTION

3-2-64

A.M.

SYM	DESCRIPTION	DATE	CH. NO.	DRAFTS	CHECKER	ENG. APP.
UNLESS OTHERWISE SPECIFIED:		SCALE: 1:1				
DIMENSIONS ARE IN INCHES		MAXIMUM ALLOWABLE TOLERANCES HAVE BEEN DETERMINED AND ANY DEVIATIONS WILL BE CAUSE FOR REJECTION.				
TOLERANCES ON		REMOVE ALL BURRS AND SHARP EDGES				
FRAC. ± 1/64 DEC. ± .005 ANGLES ± 1/2°						