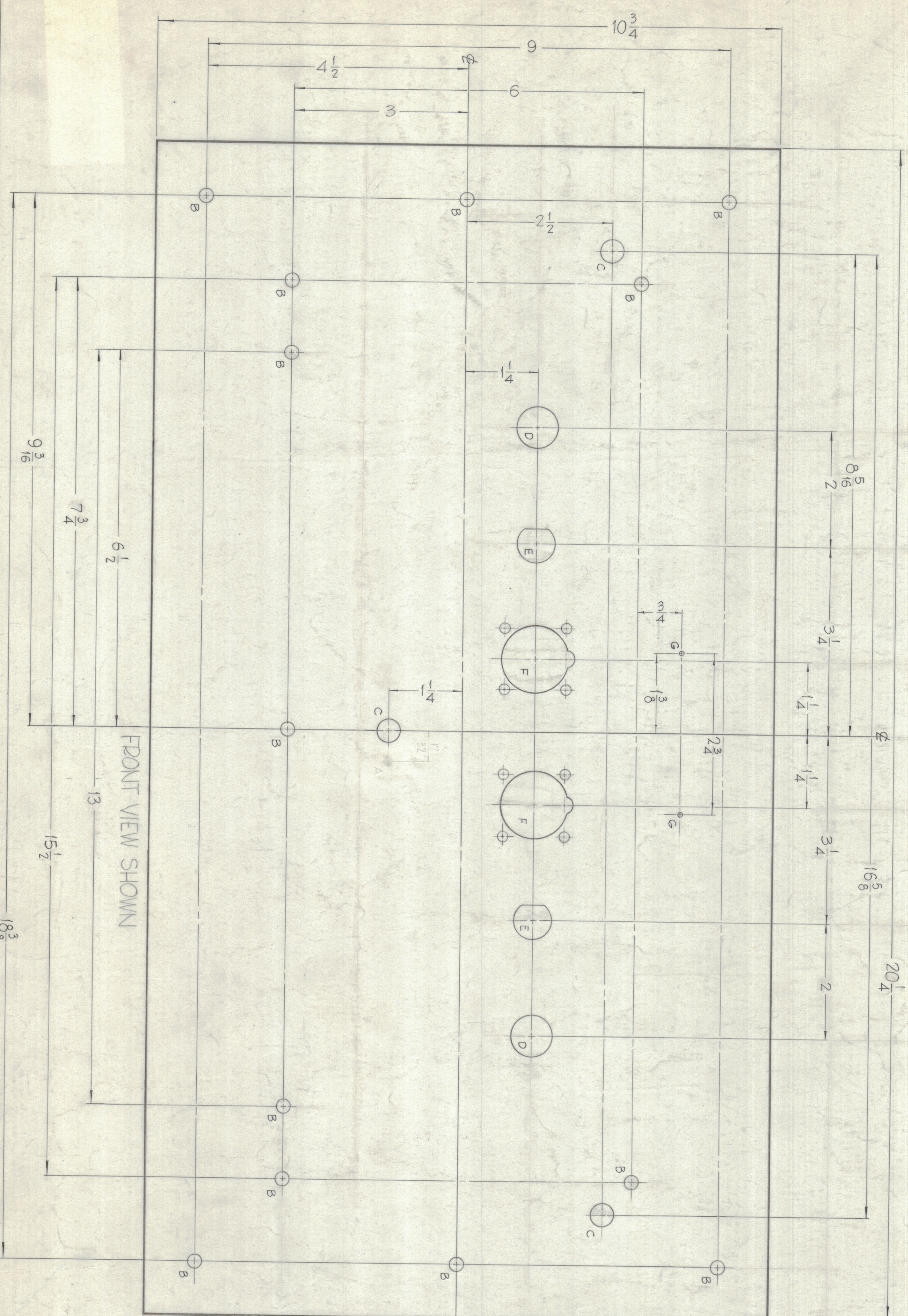


REVISIONS				
ZONE	REV	DESCRIPTION	DATE	BY
0	0	ORIGINAL RELEASE FOR PRODUCTION	3-24	AM

11 10 9 8 7 6 5 4 3 2 1



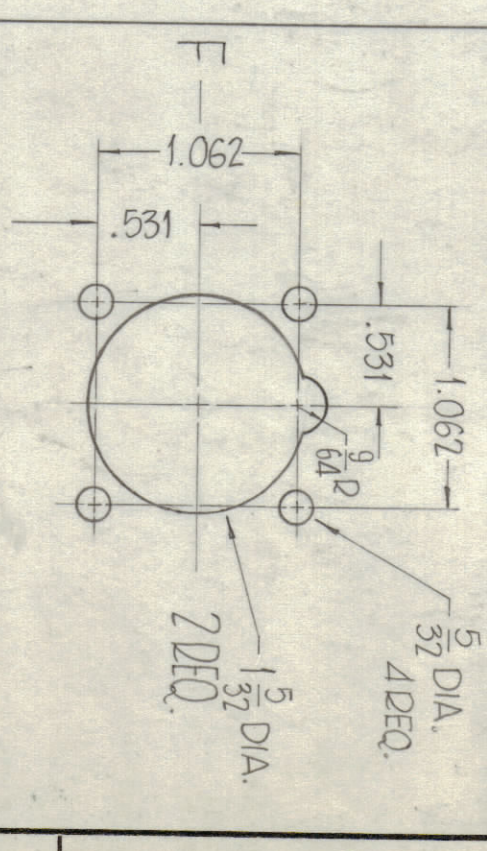
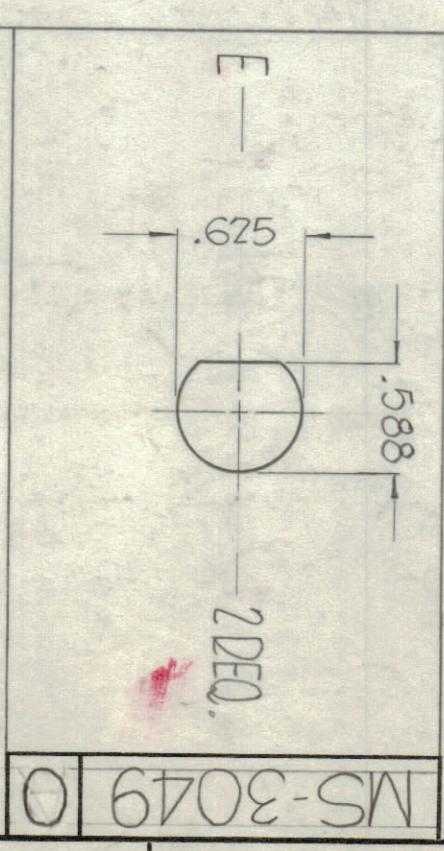
DEF - 3/16

DEF (A HOLE)

METAL STAMP TMC NO. MS-30490, 1/8 HIGH GOTHIC, ON BEAD.

**HOLES**

A-7/8 MAX X 1/8 DEEP	13 REQ.
B-7/32 DIA.	13 REQ.
C-3/8 DIA.	3 REQ.
D-11/16 DIA.	2 REQ.
E-NO. 60 DRILL	2 REQ.



DEF-TMC DWG. LD-1166, PX-

**LIST OF MATERIAL**

REQD.	ITEM	PART NUMBER	SYMBOL
F	BUDGET		
	MATERIAL	ALUMINUM, 2024-T3	
	FINISH	SEE NOTES	

**THE TECHNICAL MATERIAL CORP.**  
MAMARONECK, NEW YORK

**PANEL, FRONT**

DATE	BY	DATE	BY
12/16/62	ROL	12/16/62	ROL
12/16/62	ROL	12/16/62	ROL
12/16/62	ROL	12/16/62	ROL

MS-3049 0

**FINISH** — S404 - IODITE  
S114 - ZINC CHROMATE PRIMER  
S115 - TMC SMOOTH GRAY ENAMEL, OR PRIME AND PAINT  
TO CUSTOMERS SPECIFICATIONS.

**MACHINING** — 1-LATERAL BOW OF PANEL MUST BE KEPT TO .031 TOLERANCE.  
2-MILL ALL EDGES.  
3-HOLES MUST BE DRILLED.  
4-PANEL MUST BE FREE OF ALL MACHINING MARKS, GOUGES AND SCRATCHES. IF NECESSARY SAND FRONT OF PANEL WITH NO. 120 GRIT SANDPAPER.

**NOTES**

11 10 9 8 7 6 5 4 3 2 1