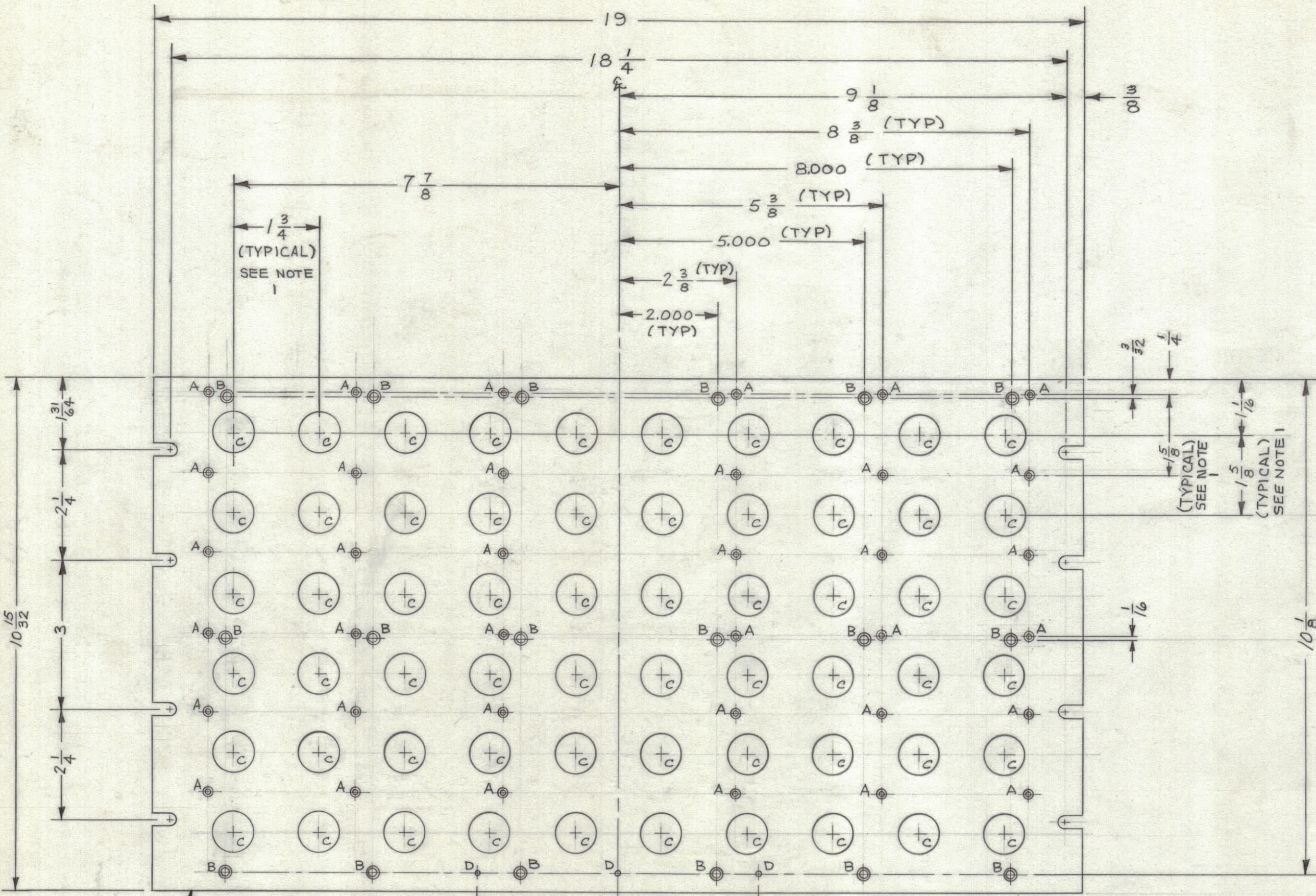
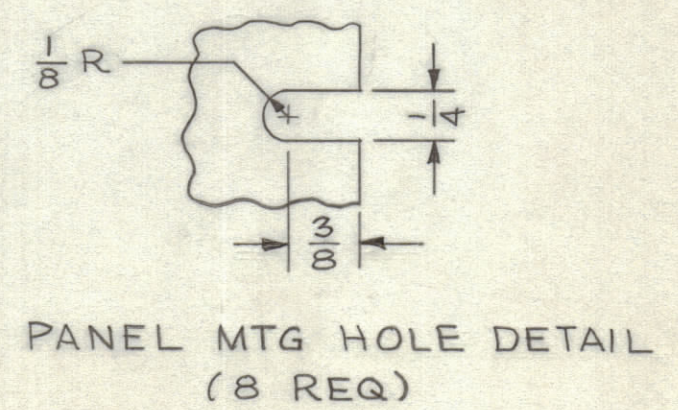
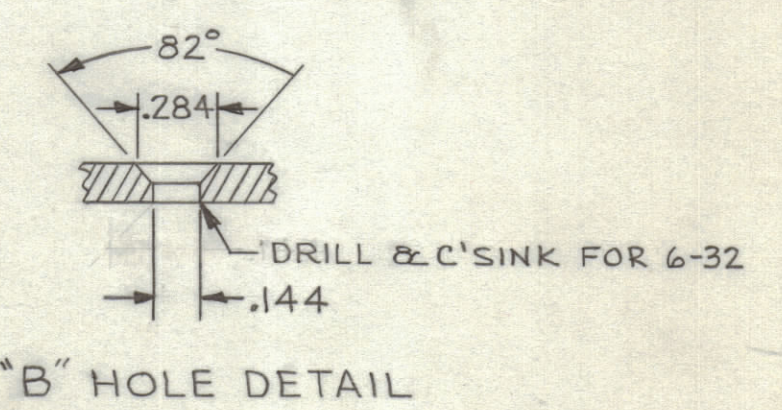
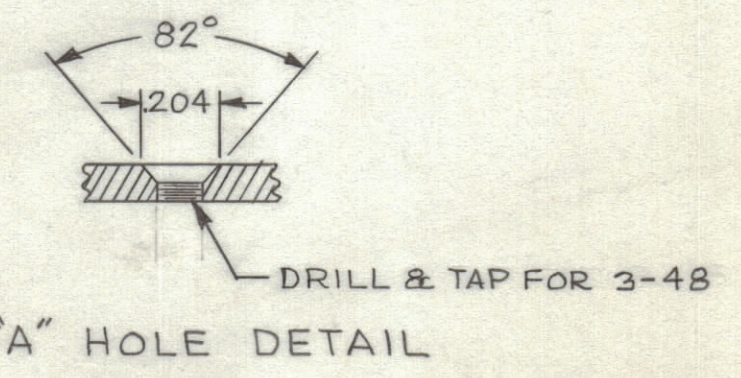


REVISIONS							
ZONE	SYM	DESCRIPTION	DATE	E.M.N. NO.	DRAFT	CHKD	APPD



HOLE	DESCRIPTION	REQ
A	SEE DETAIL C'SINK	36
B	SEE DETAIL C'SINK	18
C	13/16 DIA.	60
D	.0785 DIA.	3



METAL STAMP TMC PART NO. 3045 1/2 HIGH BLACK GOTHIC ON REAR OF PANEL.

- MACHINING NOTES:**
- LATERAL BOW OF PANEL MUST BE KEPT .031 TOLERANCE
 - MILL ALL EDGES.
 - HOLES MUST BE FREE OF ALL MACHINING MARKS, GOUGES AND SCRATCHES IF NECESSARY, SAND FRONT OF PANEL WITH NO. 120 GRIT SANDPAPER.

- FINISHING NOTES:**
- S 404 IRIDITE
 - S 114 ZINC CHROMATE PRIMER
 - S 115 TMC SMOOTH GRAY ENAMEL OR PRIME AND PAINT TO CUSTOMER SPEC.
- FRONT AND EDGES ONLY

NOTE:
1. TOLERANCE ARE NOT ACCUMULATIVE.

NOTICE TO PERSONS RECEIVING THIS DRAWING
THE TECHNICAL MATERIEL CORPORATION claims proprietary right in the material disclosed herein. This drawing is issued in confidence or engineering information only and may not be reproduced or used to manufacture anything shown hereon without permission from THE TECHNICAL MATERIEL CORPORATION to the user. This drawing is loaned for mutual assistance and is subject to recall at any time.

Property of:
THE TECHNICAL MATERIEL CORPORATION
MAMARONECK, NEW YORK

NOTES
THE CONTENTS OF THIS DRAWING ARE THE EXCLUSIVE PROPERTY OF THE TECHNICAL MATERIEL CORP. ITS UNAUTHORIZED USE OR REPRODUCTION IN WHOLE OR IN PART IS STRICTLY FORBIDDEN.

REQ'D.	ITEM	PART NUMBER	DESCRIPTION	SYMBOL
MARTINENGO LIST OF MATERIAL				
MATERIAL		3/16 ALUMINUM 2024-T3	THE TECHNICAL MATERIEL CORP. MAMARONECK, NEW YORK	
FINISH		SEE FINISHING NOTES	TITLE PANEL, FRONT MACHINING	
QTY./UNIT	MODEL USED ON	ASS'Y. NO.	DRAWN	DATE
DO NOT SCALE	CODE	S401-184	M TANTILLO	11-16-62
UNLESS OTHERWISE SPECIFIED DIMENSIONS ARE IN INCHES AND INCLUDE CHEMICALLY APPLIED OR PLATED FINISHES			CHECKED	DATE
DECIMALS .X ± .05 .XX ± .01 .XXX ± .005			ELECT. DES. DATE	
FRACTIONS ± 1/64 ANGLES ± 0° 30'			MECH. DES. DATE	
TOLERANCES			DATE	
			12/10/62	
			SHEET	
			MS-3045	
			REV. LTR.	

MS-3045