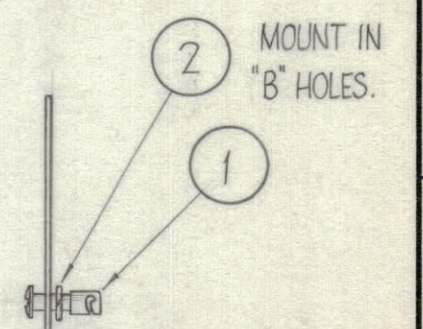
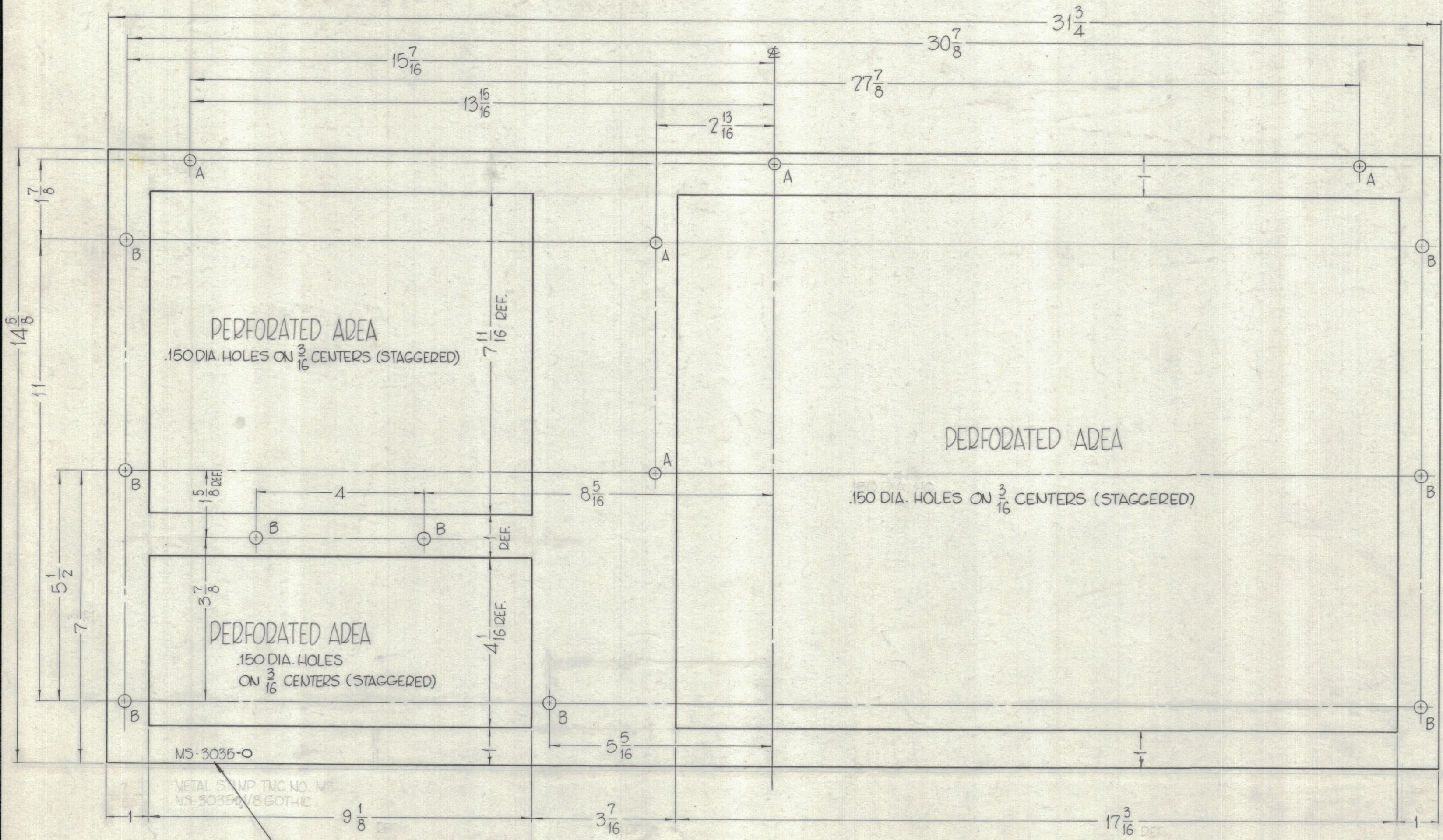


HOLES —

- A - 7/32 DIA. — 5 REQ.
- B - 1/4 DIA. — 9 REQ.

REVISIONS						
ZONE	SYM	DESCRIPTION	DATE	E.M.N. NO.	DRAFT	CHKD
0		ORIGINAL RELEASE FOR PRODUCTION	3-3-64		A.M.	



MS-3035-0  
METAL STAMP TMC NO. MS-3035 1/8 GOTHIC

METAL STAMP TMC PART NO. 1/8 HIGH GOTHIC.

MOUNT ITEMS 1 AND 2 AFTED FINISHING.  
USE MATERIAL THICKNESS FOR MAXIMUM RADIUS ON BEND.  
PERFORATION, .150 DIA. HOLES ON 3/16 CENTERS. (STAGGEDED.)

NOTES

DEF. BLANK SIZE, TMC DWG. MS-3035

Q'TY./UNIT	MODEL USED ON	ASS'Y. NO.
1	GPT-200K	AX-398
SCALE	CODE	
	A	

THE CONTENTS OF THIS DRAWING ARE THE EXCLUSIVE PROPERTY OF THE TECHNICAL MATERIEL CORP. ITS UNAUTHORIZED USE OR REPRODUCTION IN WHOLE OR IN PART IS STRICTLY FORBIDDEN.

9	2	FS-109-3	RING, STUD DETAINING	B
9	1	FS-110-7	STUD, SLOTTED	B
REQ'D.	ITEM	PART NUMBER	DESCRIPTION	SYMBOL
F. BUDETTI LIST OF MATERIAL				
MATERIAL			THE TECHNICAL MATERIEL CORP.	
.064 THICK, ALUMINUM, 5052 - H-32			MAMARONECK, NEW YORK	
FINISH			TITLE	
S404 - IDIDITE			COVERED, TOP (CROWBAR)	
UNLESS OTHERWISE SPECIFIED DIMENSIONS ARE IN INCHES AND INCLUDE CHEMICALLY APPLIED OR PLATED FINISHES			DRAWN	
			John C. Biele	
			DATE	
			7/3/62	
			CHECKED	
			DATE	
			2/10/64	
			ELECT. DES.	
			DATE	
			2/19/64	
			MECH. DES.	
			DATE	
			2/10/64	
DECIMALS			FRACTIONS	
.X ± .05			± 1/64	
.XX ± .01			ANGLES	
.XXX ± .005			± 0° 30'	
TOLERANCES			MS-3035	
			O	
			SHEET	
			REV. LTR.	

MS-3035 0