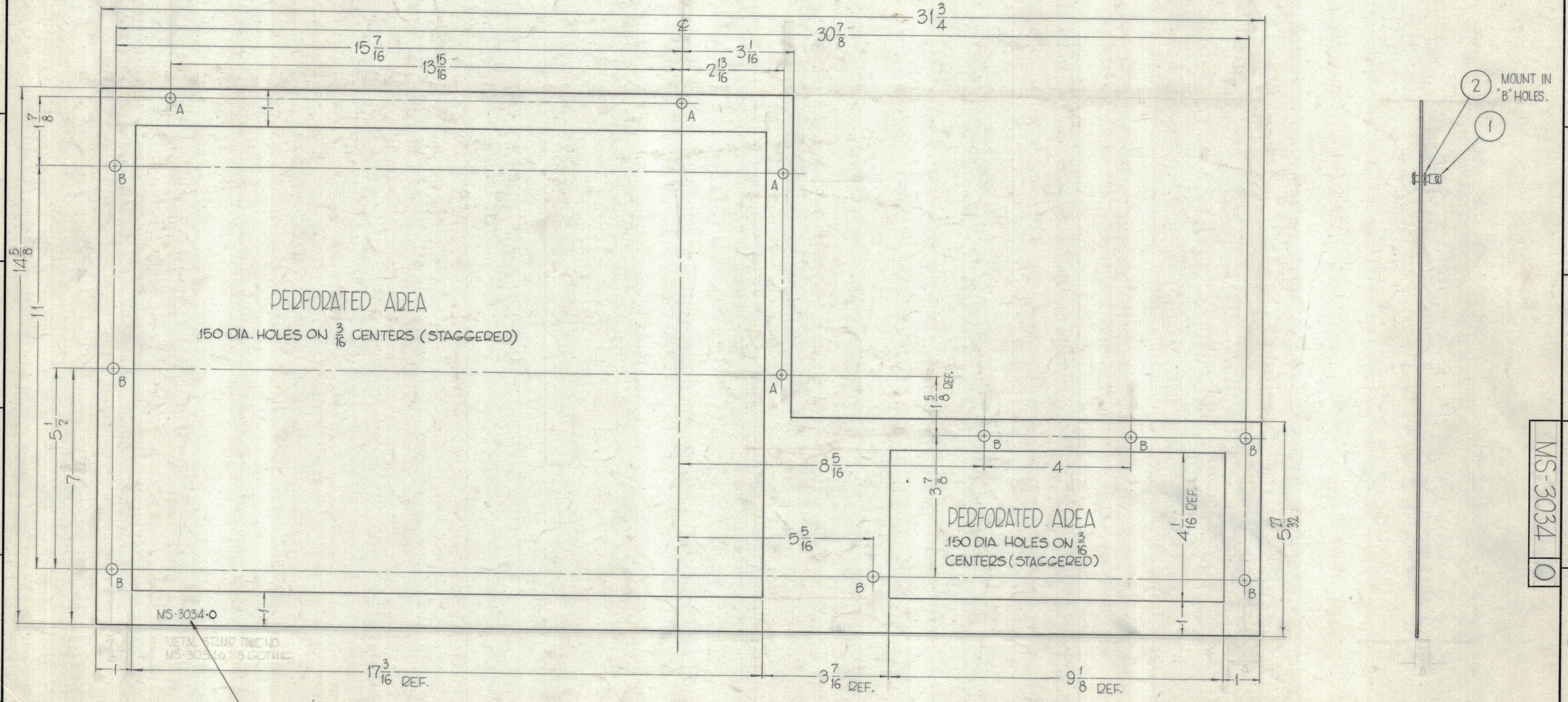


HOLES

A - 7/32 DIA. 4 REQ.

B - 1/4 DIA. 8 REQ.

REVISIONS							
ZONE	SYM	DESCRIPTION	DATE	E.M.N. NO.	DRAFT	CHKD	APPD
0		ORIGINAL RELEASE FOR PRODUCTION	3-3-64		A.M.		



PERFORATED AREA
150 DIA. HOLES ON 3/16 CENTERS (STAGGERED)

PERFORATED AREA
150 DIA. HOLES ON 3/16 CENTERS (STAGGERED)

MS-3034-O
METAL STAMP TMC NO.
MS-3034, 1/8 GOOTHIC.

METAL STAMP TMC PART NO. 1/8 HIGH GOOTHIC.

MOUNT ITEMS 1 AND 2 AFTER FINISHING.
USE MATERIAL THICKNESS FOR MAXIMUM RADIUS ON BEND.
PERFORATION, .150 DIA. HOLES ON 3/16 CENTERS. (STAGGEDED.)

REQ'D.	ITEM	PART NUMBER	DESCRIPTION	SYMBOL
8	7	FS-109-3	RING, STUD RETAINING	B
8	1	FS-110-7	STUD, SLOTTED	B

F. BUDETTI LIST OF MATERIAL

MATERIAL	.064 THICK, ALUMINIUM, 5052 -H-32		
FINISH	S404 - IRIDITE		
THE TECHNICAL MATERIEL CORP.		MAMARONECK, NEW YORK	
COVERED, BOTTOM (CROWBAR)			
DRAWN	John C. Biele	DATE	2/10/64
CHECKED	JOB	DATE	2/10/64
ELECT. DES.	DB AB	DATE	2/10/64
MECH. DES.	me	DATE	2/10/64
UNLESS OTHERWISE SPECIFIED DIMENSIONS ARE IN INCHES AND INCLUDE CHEMICALLY APPLIED OR PLATED FINISHES		FINAL APPROVAL	
TOLERANCES		MS-3034	
DECIMALS	.X ± .05	FRACTIONS	± 1/64
	.XX ± .01	ANGLES	± 0° 30'
	.XXX ± .005		

DEF. BLANK SIZE, TNG DWG MS-3034

1	GPT-200K	AX-398
Q'TY./UNIT	MODEL USED ON	ASS'Y. NO.
SCALE	CODE	
	A	

THE CONTENTS OF THIS DRAWING ARE THE EXCLUSIVE PROPERTY OF THE TECHNICAL MATERIEL CORP. ITS UNAUTHORIZED USE OR REPRODUCTION IN WHOLE OR IN PART IS STRICTLY FORBIDDEN.

NOTES