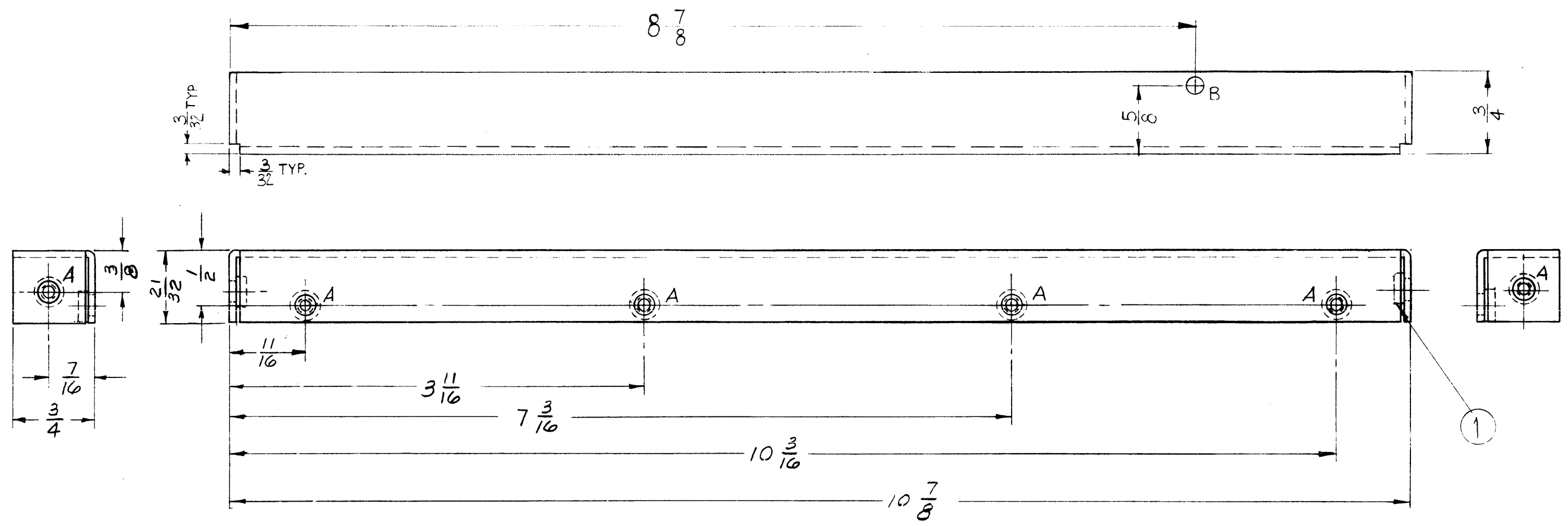


MS-3027

REVISIONS						
SYM	DESCRIPTION	DATE	E.M.N. NO.	DRAFT	CHKD	APPD



HOLE	DESCRIPTION	REQ'D
A	.191-.194 DIA	6
B	5/32 DIA.	1

NOTICE TO PERSONS RECEIVING THIS DRAWING

THE TECHNICAL MATERIEL CORPORATION claims proprietary right in the material disclosed herein. This drawing is issued in confidence and is intended for information only and may not be used for reproduction or manufacture without the express written permission from THE TECHNICAL MATERIEL CORPORATION. All rights reserved. The use of this drawing without the consent of THE TECHNICAL MATERIEL CORPORATION is strictly prohibited.

THE TECHNICAL MATERIEL CORPORATION
MAMARONECK, NEW YORK

REQ'D.	ITEM	PART NUMBER	DESCRIPTION	SYMBOL
6	1	NT-129-632-4	NUT, ROUND, SWAGE TYPE	A

STRUMMER		LIST OF MATERIAL	
MATERIAL	.064 ALUMINUM 5052 H32	THE TECHNICAL MATERIEL CORP. MAMARONECK, NEW YORK	
FINISH	5404 YEL IRIDITE	TITLE BRACKET, MOUNTING, PRINTED CKT	

UNLESS OTHERWISE SPECIFIED DIMENSIONS ARE IN INCHES AND INCLUDE CHEMICALLY APPLIED OR PLATED FINISHES			
DECIMALS .X ± .05 .XX ± .01 .XXX ± .005	TOLERANCES	FRACTIONS ± 1/64 ANGLES ± 0° 30'	
DRAWN T. RAMIREZ	DATE 9/27/62	FINAL APPROVAL DMA	DATE 11-27-62
CHECKED JMA	DATE 10/16/62	DATE 11-27-62	DATE 11-27-62
ELECT. DES. JMA	DATE 11-27-62	MS-3027	
MECH. DES. JMA	DATE 11-27-62	SHEET	REV. LTR.

MOUNT INSERTS AFTER FINISHING
USE MATERIAL THICKNESS FOR MAX. RADIUS ON ALL BENDS UNLESS OTHERWISE SPECIFIED

NOTES

Q'TY./UNIT	MODEL USED ON	ASS'Y. NO.
1	SPU-2	
SCALE FULL	CODE	

THE CONTENTS OF THIS DRAWING ARE THE EXCLUSIVE PROPERTY OF THE TECHNICAL MATERIEL CORP. ITS UNAUTHORIZED USE OR REPRODUCTION IN WHOLE OR IN PART IS STRICTLY FORBIDDEN.