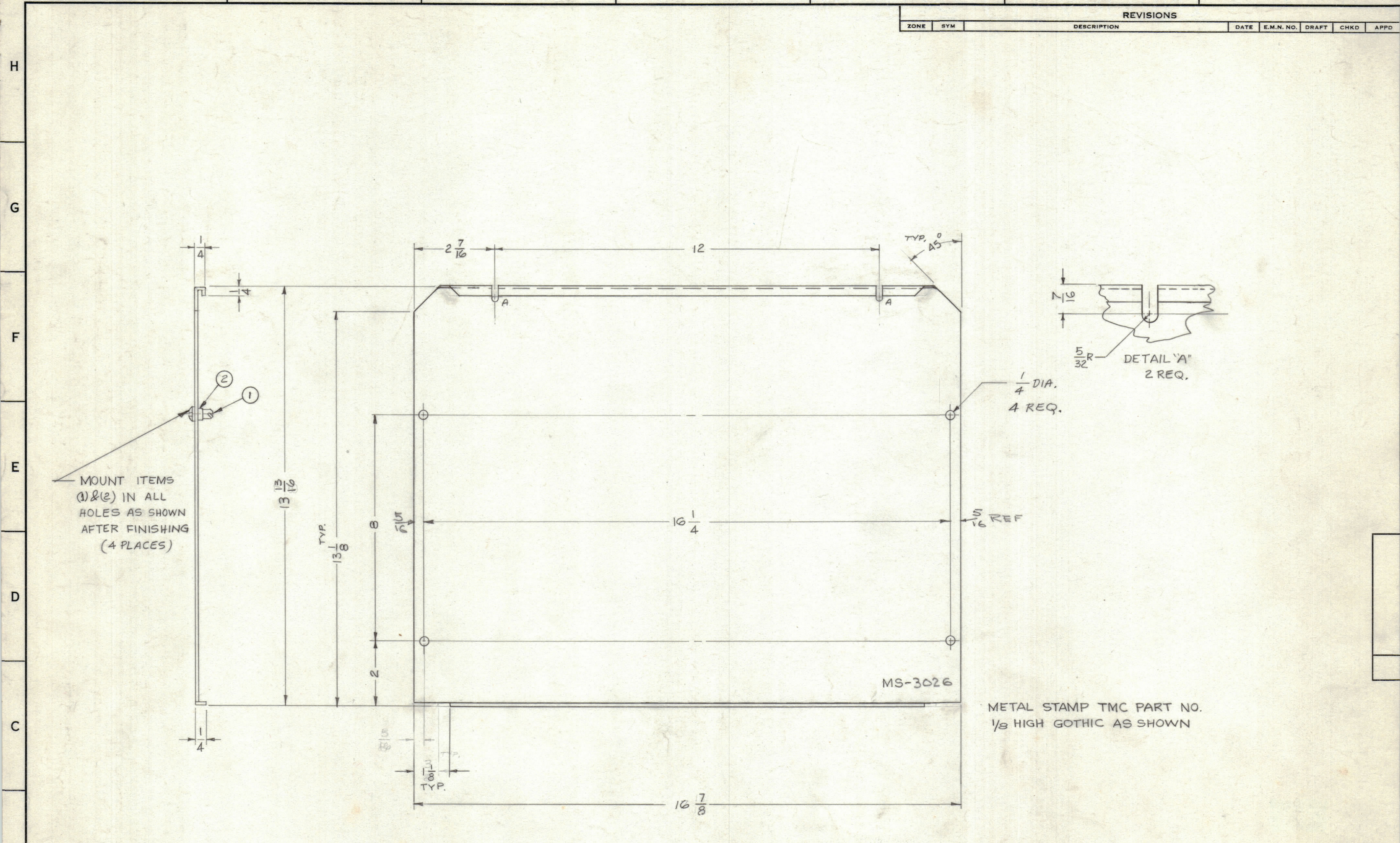
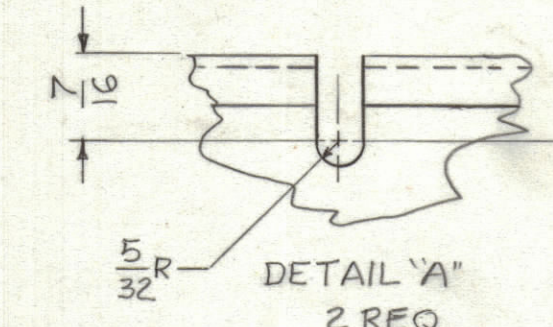


REVISIONS						
ZONE	SYM	DESCRIPTION	DATE	E.M.N. NO.	DRAFT	CHKD



MOUNT ITEMS (1) & (2) IN ALL HOLES AS SHOWN AFTER FINISHING (4 PLACES)

1/4 DIA. 4 REQ.



MS-3026

METAL STAMP TMC PART NO. 1/8 HIGH GOTHIC AS SHOWN

NOTICE TO PERSONS RECEIVING THIS DRAWING

THE TECHNICAL MATERIEL CORPORATION claims proprietary right in the material disclosed hereon. This drawing is issued in confidence for engineering information only and may not be reproduced or used to manufacture anything shown hereon without permission from THE TECHNICAL MATERIEL CORPORATION to the user. This drawing is loaned for mutual assistance and is subject to recall at any time.

Property of:
THE TECHNICAL MATERIEL CORPORATION
MAMARONECK, NEW YORK

USE MATERIAL THICKNESS FOR MAX. RADIUS ON ALL BENDS UNLESS OTHERWISE SPECIFIED

NOTES

2	SPU-2	
QTY/UNIT	MODEL USED ON	ASSY. NO.
SCALE	CODE	

4	2	FS-109-3	RING STUD RETAINING	
4	1	FS-110-1	STUD, SLOTTED HEAD	
REQ'D.	ITEM	PART NUMBER	DESCRIPTION	SYMBOL
STRUMMER LIST OF MATERIAL				
MATERIAL			THE TECHNICAL MATERIEL CORP.	
.051 ALUMINUM 5052-H32			MAMARONECK, NEW YORK	
FINISH			TITLE	
S404 YEL. IRIDITE			COVER, TOP & BOTTOM	
UNLESS OTHERWISE SPECIFIED DIMENSIONS ARE IN INCHES AND INCLUDE CHEMICALLY APPLIED OR PLATED FINISHES			DRAWN W.S.	DATE 8-25-64
DECIMALS .X ± .05 .XX ± .01 .XXX ± .005			CHECKED	DATE 10-16-62
FRACTIONS ± 1/64 ANGLES ± 0° 30'			ELECT. DES.	DATE 11-27-62
TOLERANCES			MECH. DES.	DATE 11-27-62
			SHEET	MS-3026
			REV. LTR.	