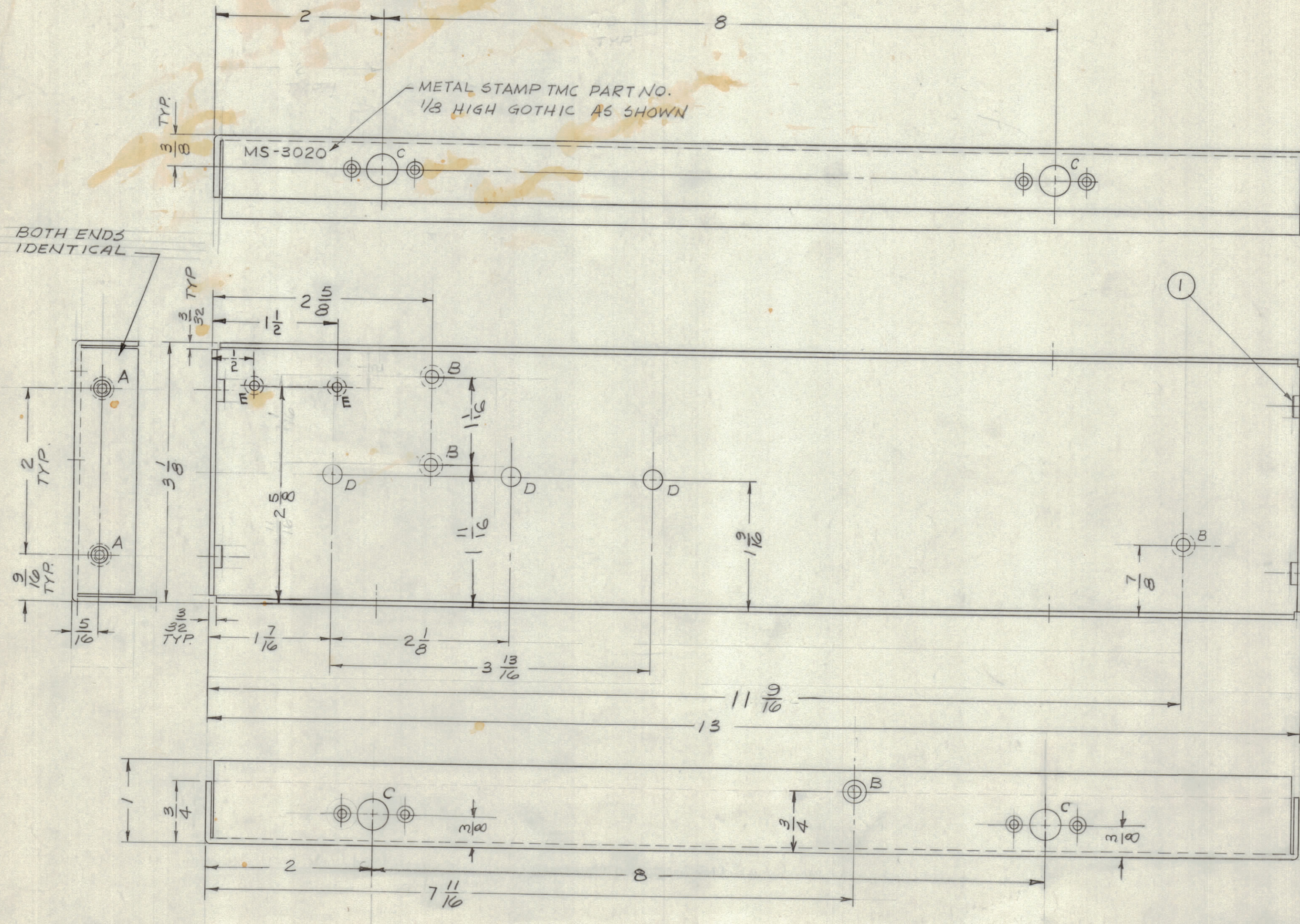
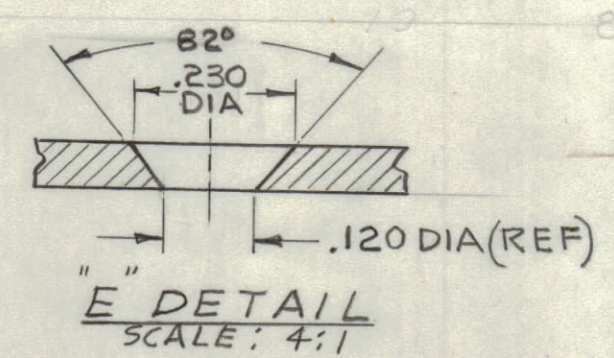
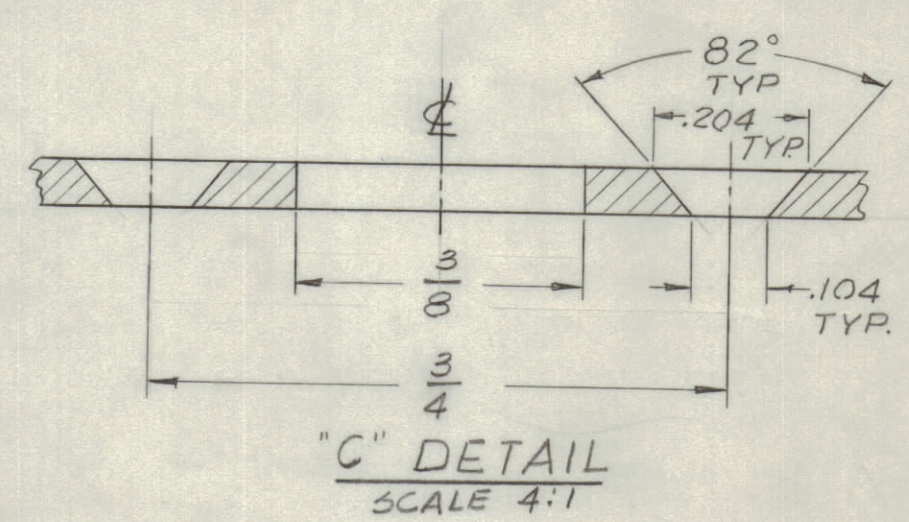
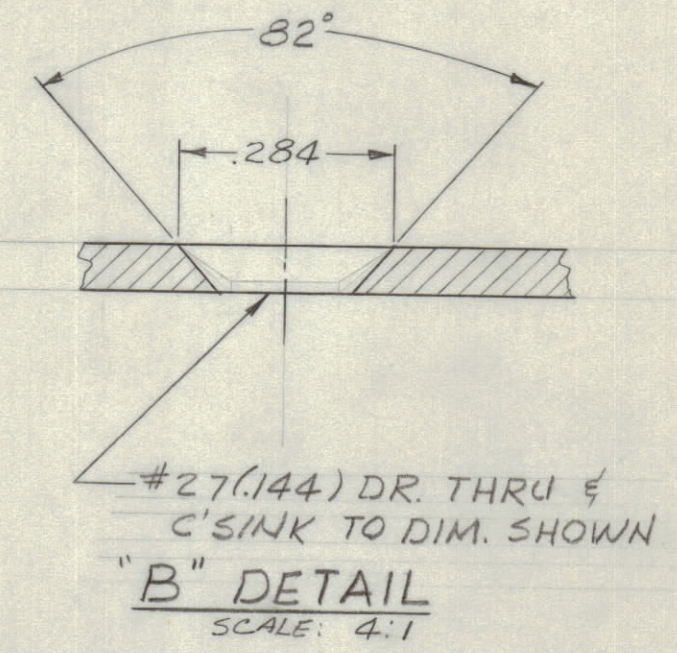


REVISIONS							
ZONE	SYM	DESCRIPTION	DATE	E.M.N. NO.	DRAFT	CHKD	APPD



HOLE	DESCRIPTION	REQ'D
A	.191-.194 DIA.	4
B	SEE DETAIL	4
C	SEE DETAIL	4
D	A(.234) DR.	3
E	SEE DETAIL	2



**NOTICE TO PERSONS RECEIVING THIS DRAWING**

THE TECHNICAL MATERIEL CORPORATION claims proprietary right in the material disclosed hereon. This drawing is issued in confidence for engineering information only and may not be reproduced or used to manufacture anything shown hereon without permission from THE TECHNICAL MATERIEL CORPORATION to the user. This drawing is loaned for mutual assistance and is subject to recall at any time.

Property of:  
THE TECHNICAL MATERIEL CORPORATION  
MAMARONECK, NEW YORK

USE MATERIAL THICKNESS FOR MAX. RADIUS ON ALL BENDS UNLESS OTHERWISE SPECIFIED

MOUNT INSERTS AFTER FINISHING

**NOTES**

QTY./UNIT	MODEL USED ON	ASS'Y. NO.
1	SPU-2	
SCALE	CODE	
FULL		

THE CONTENTS OF THIS DRAWING ARE THE EXCLUSIVE PROPERTY OF THE TECHNICAL MATERIEL CORP. ITS UNAUTHORIZED USE OR REPRODUCTION IN WHOLE OR IN PART IS STRICTLY FORBIDDEN.

REQ'D.	ITEM	PART NUMBER	DESCRIPTION	SYMBOL
4	1	NT-129-632-4	NUT, ROUND, SWAGE TYPE	A

LIST OF MATERIAL		THE TECHNICAL MATERIEL CORP. MAMARONECK, NEW YORK	
MATERIAL	.064 ALUMINUM 5052-H32	TITLE	PLATE, LEFT SIDE
FINISH	S404 YEL IRIDITE	DRAWN	T. KAMIREZ
UNLESS OTHERWISE SPECIFIED DIMENSIONS ARE IN INCHES AND INCLUDE CHEMICALLY APPLIED OR PLATED FINISHES		CHECKED	
DECIMALS	.X ± .05 .XX ± .01 .XXX ± .005	DATE	9/26/62
FRACTIONS	± 1/64 ANGLES ± 0° 30'	DATE	10/16/62
TOLERANCES		DATE	11-20-62
		DATE	11-20-62

MS-3020

MS-3020