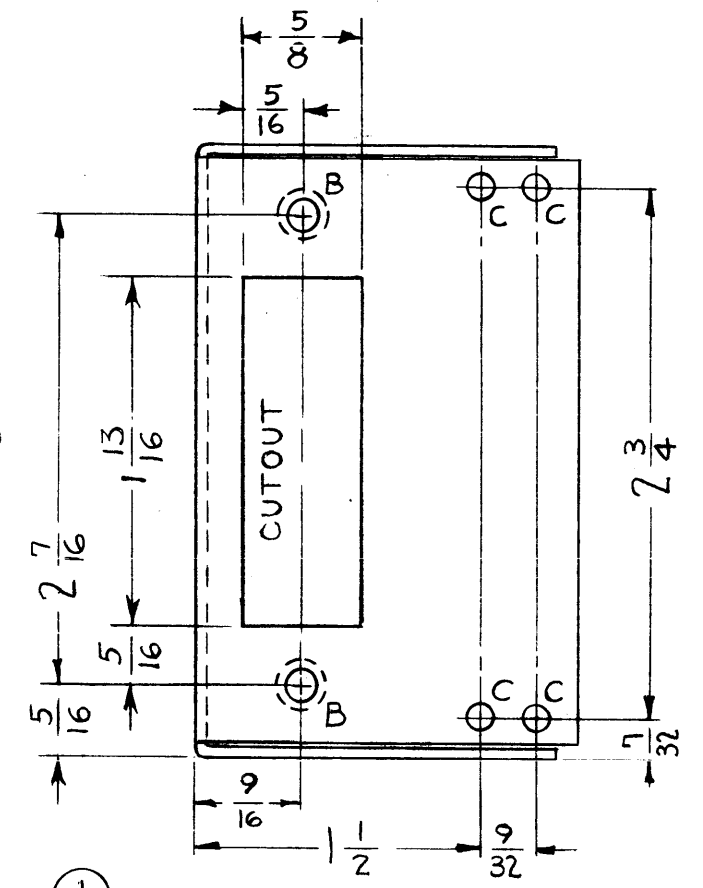
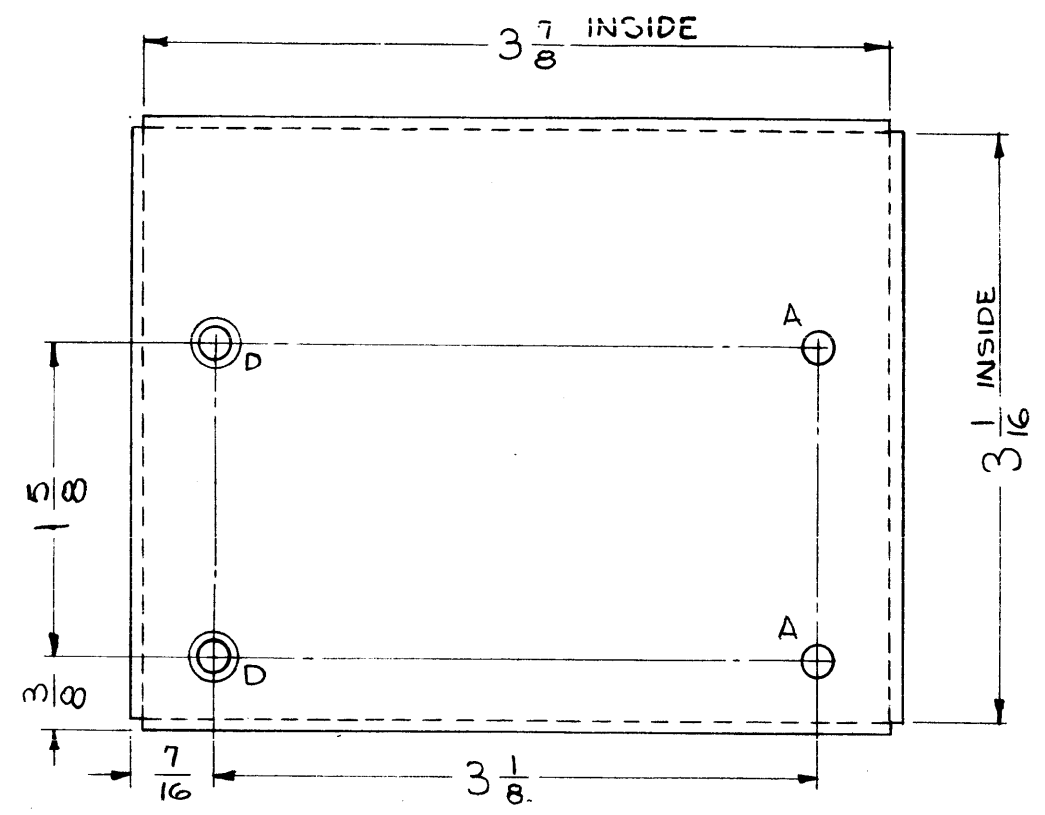
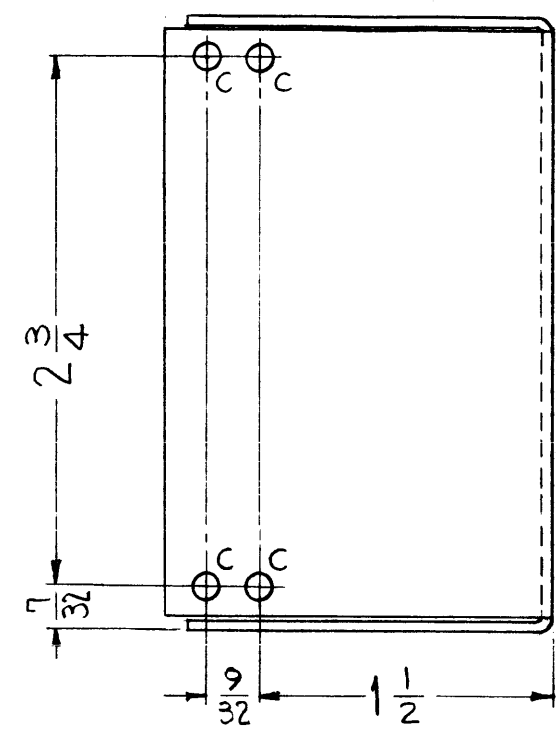
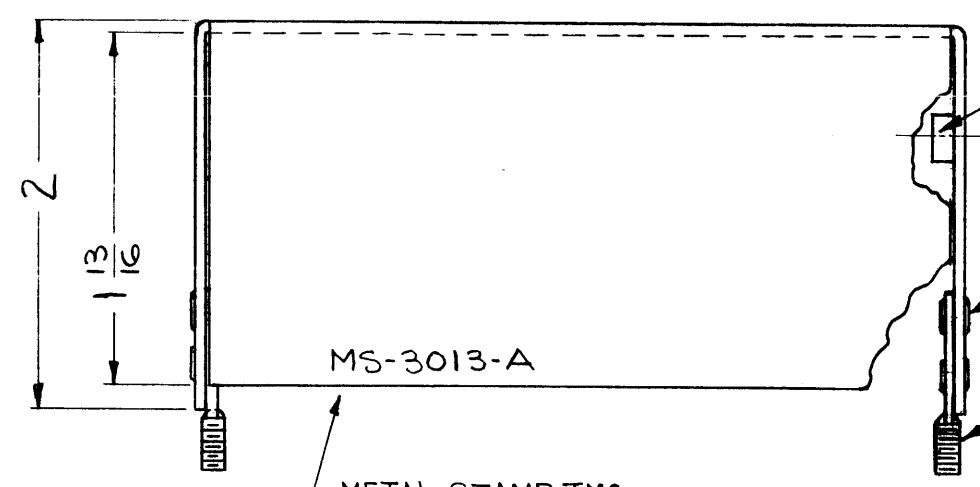


MS-3013 A

THE CONTENTS OF THIS DRAWING ARE THE EXCLUSIVE PROPERTY OF THE TECHNICAL MATERIEL CORP. ITS UNAUTHORIZED USE OR REPRODUCTION IN WHOLE OR IN PART IS STRICTLY FORBIDDEN.



LEGEND		
HOLE	DESCRIPTION	REQ.
A	5/32 DIA	4
B	.161-.164 DIA	2
C	9/64 DIA	8
D	.150 DIA HOLE, C'SINK 82° TO .280 DIA.	2



METAL STAMP TMC
PART NO. 1/8 HIGH,
GOTHIC

- ① MOUNT ITEM (1) IN ALL "B" HOLES AS SHOWN AFTER FINISHING.
- ② MOUNT ITEM (2) WITH ITEM (3) IN ALL "C" HOLES AS SHOWN AFTER FINISHING.
- ③ IN ALL "C" HOLES

8	3	EY-100-7	EYELET, FLAT FLANGE	C
4	2	SC-106-2	BOLT, SPADE, REGULAR TYPE	C
2	1	NT-129-440-4	NUT, ROUND, SWAGE TYPE	B
REQ. ITEM	PART NO.		J. STRUMER DESCRIPTION	SYMBOL
.064			THE TECHNICAL MATERIEL CORP.	
STOCK SIZE			MAMARONECK, NEW YORK	
ALUMINUM			COVER, HEATER-XTAL	
MATERIAL				
5052-H32				
TYPE & TEMPER		HEAT TREAT. SPEC.		
S404-YELLOW IRIDITE		DRAWN		
FINISH & SPEC. NO.		MECH. DES. APP.		
				MS-3013
				A

A	(2) "A" HOLES DELETED (2) "D" HOLES ADDED	7-17-63	9627			
SYM	DESCRIPTION	DATE	CH. NO.	DRAFTS	CHECKER	ENG. APP.
UNLESS OTHERWISE SPECIFIED:		SCALE: FULL				
DIMENSIONS ARE IN INCHES		MAXIMUM ALLOWABLE TOLERANCES HAVE BEEN DETERMINED AND ANY DEVIATIONS WILL BE CAUSE FOR REJECTION.				
TOLERANCES ON FRACTIONS ± 1/64 DECIMALS ± .005 ANGLES ± 1/2°		REMOVE ALL BURRS AND SHARP EDGES				
		1	TRX-1		AO-111	2-14-63
		REQ. PER UNIT	MODEL	SECTION	ASS'Y. NO.	DATE
		USED ON				