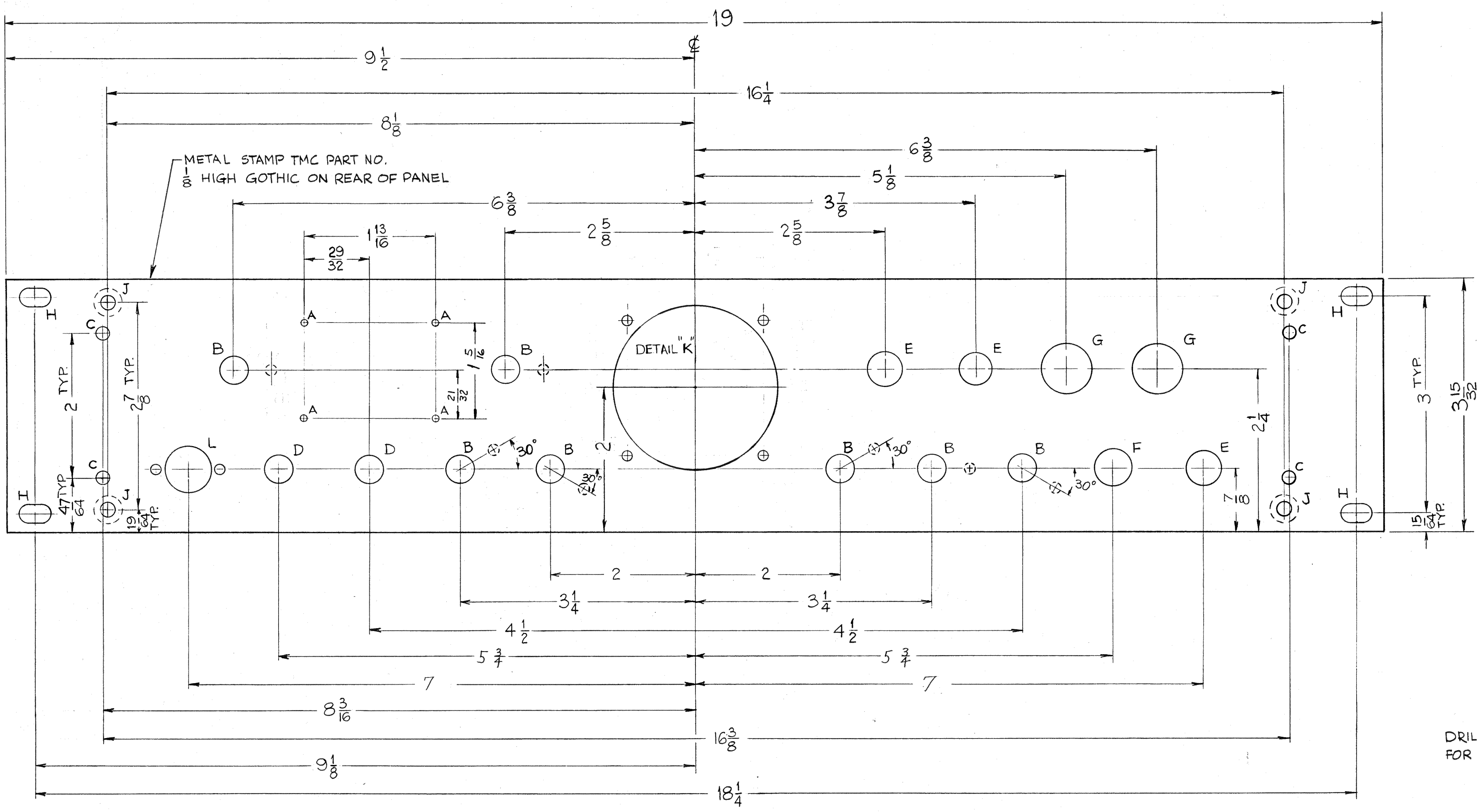


**NOTICE TO PERSONS RECEIVING THIS DRAWING**

THE TECHNICAL MATERIEL CORPORATION claims proprietary right in the material disclosed hereon. This drawing is issued in confidence for engineering information only and may not be reproduced or used to manufacture anything shown hereon without permission from THE TECHNICAL MATERIEL CORPORATION to the user. This drawing is loaned for mutual assistance and is subject to recall at any time.

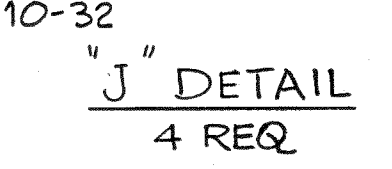
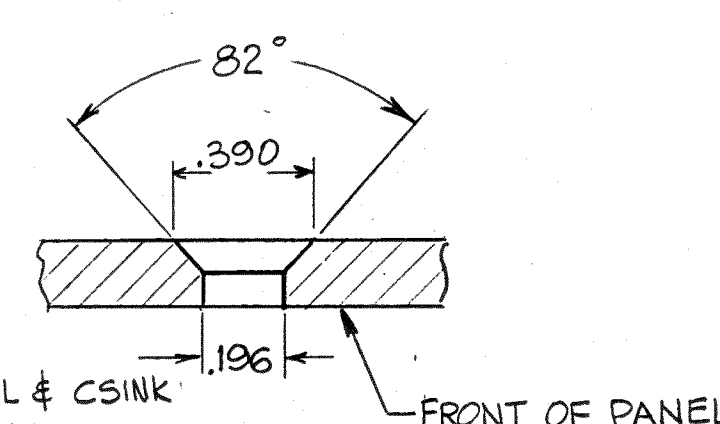
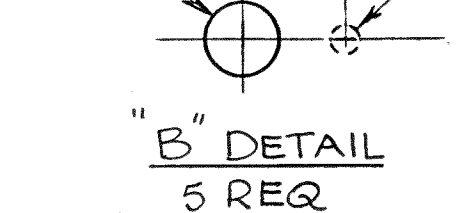
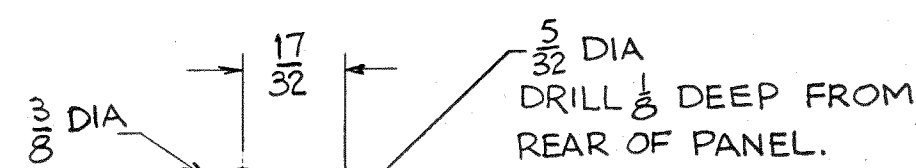
Property of:  
THE TECHNICAL MATERIEL CORPORATION  
MAMARONECK, NEW YORK

TOP



LEGEND

HOLE	DESCRIPTION	REQ.
A	.076 DIA	4
B	SEE DETAIL	7
C	1/164 DIA	4
D	3/8 DIA.	2
E	15/32 DIA	3
F	1/2 DIA.	1
G	1/16 DIA.	2
H	1/4 x 7/16 SLOT	4
J	SEE CSINK DETAIL	4
K	SEE DETAIL	1
L	SEE DETAIL	1



FRONT OF PANEL SHOWN

- MACHINING:-**
- LATERAL BOW OF PANEL MUST BE KEPT TO .031 TOL.
  - MILL ALL EDGES.
  - HOLES MUST BE DRILLED
  - ALL THREADED HOLES & HOLE DIA. MUST BE HELD AFTER ETCHING.
  - PANEL MUST BE FREE OF ALL MACHINING MARKS, GOUGES & SCRATCHES, IF NECESSARY SAND FRONT WITH NO. 120 GRIT SANDPAPER

- FINISH:-**
- S404 - YELLOW IRIDITE
  - S114 - ZINC CHROMATE PRIMER
  - S115 - TMC SMOOTH GREY ENAMEL
- FRONT & EDGES ONLY  
OR  
PRIME & PAINT PER CUSTOMER

MS-3003

REF: LD-1135

REQ'D.	ITEM	PART NUMBER	DESCRIPTION	SYMBOL
1	SPU-2			
<b>LIST OF MATERIAL</b>				
MATERIAL			THE TECHNICAL MATERIEL CORP. MAMARONECK, NEW YORK	
FINISH			TITLE	
3/16 ALUMINUM			PANEL, FRONT, MACHINING	
2024-T3			SPU-2	
UNLESS OTHERWISE SPECIFIED DIMENSIONS ARE IN INCHES AND INCLUDE CHEMICALLY APPLIED OR PLATED FINISHES			DATE	DATE
DECIMALS ±.005			11-27-62	11-27-62
FRACTIONS ± 1/64			DATE	DATE
ANGLES ± 0° 30'			11-27-62	11-27-62
TOLERANCES			MS-3003	
THE CONTENTS OF THIS DRAWING ARE THE EXCLUSIVE PROPERTY OF THE TECHNICAL MATERIEL CORP. ITS UNAUTHORIZED USE OR REPRODUCTION IN WHOLE OR IN PART IS STRICTLY FORBIDDEN.			REV. LTR.	

NOTES



REVISIONS							
ZONE	SYM	DESCRIPTION	DATE	E.M.N. NO.	DRAFT	CHKD	APPD

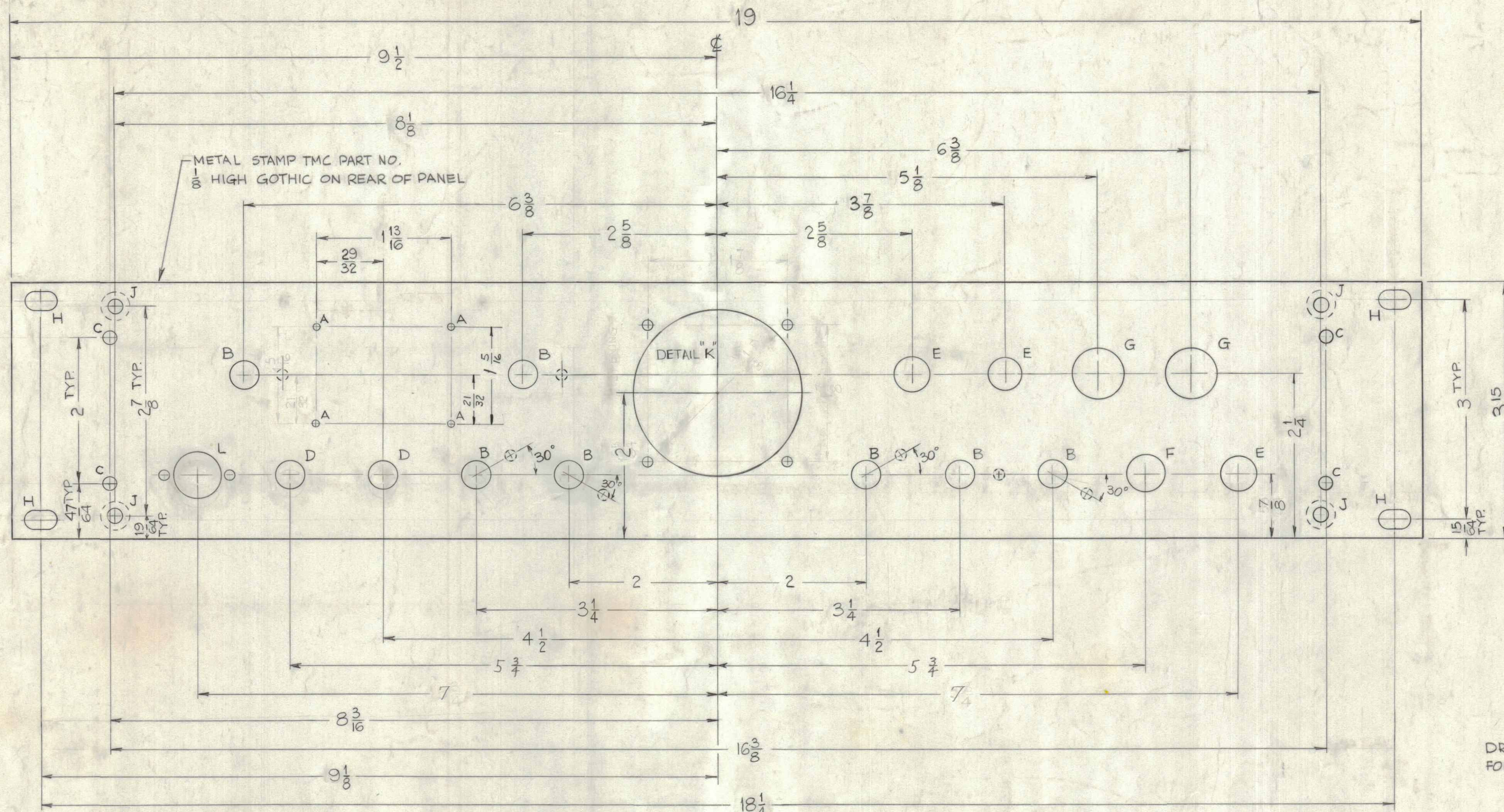
NOTICE TO PERSONS RECEIVING THIS DRAWING

THE TECHNICAL MATERIEL CORPORATION claims proprietary right in the material disclosed hereon. This drawing is issued in confidence for engineering information only and may not be reproduced or used to manufacture anything shown hereon without permission from THE TECHNICAL MATERIEL CORPORATION to the user. This drawing is loaned for mutual assistance and is subject to recall at any time.

Property of:

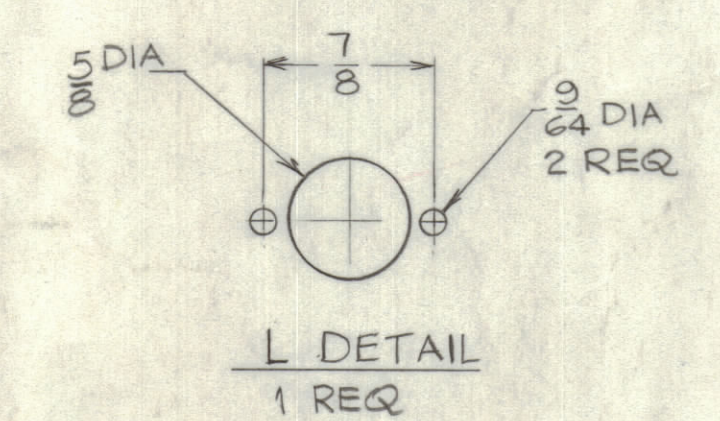
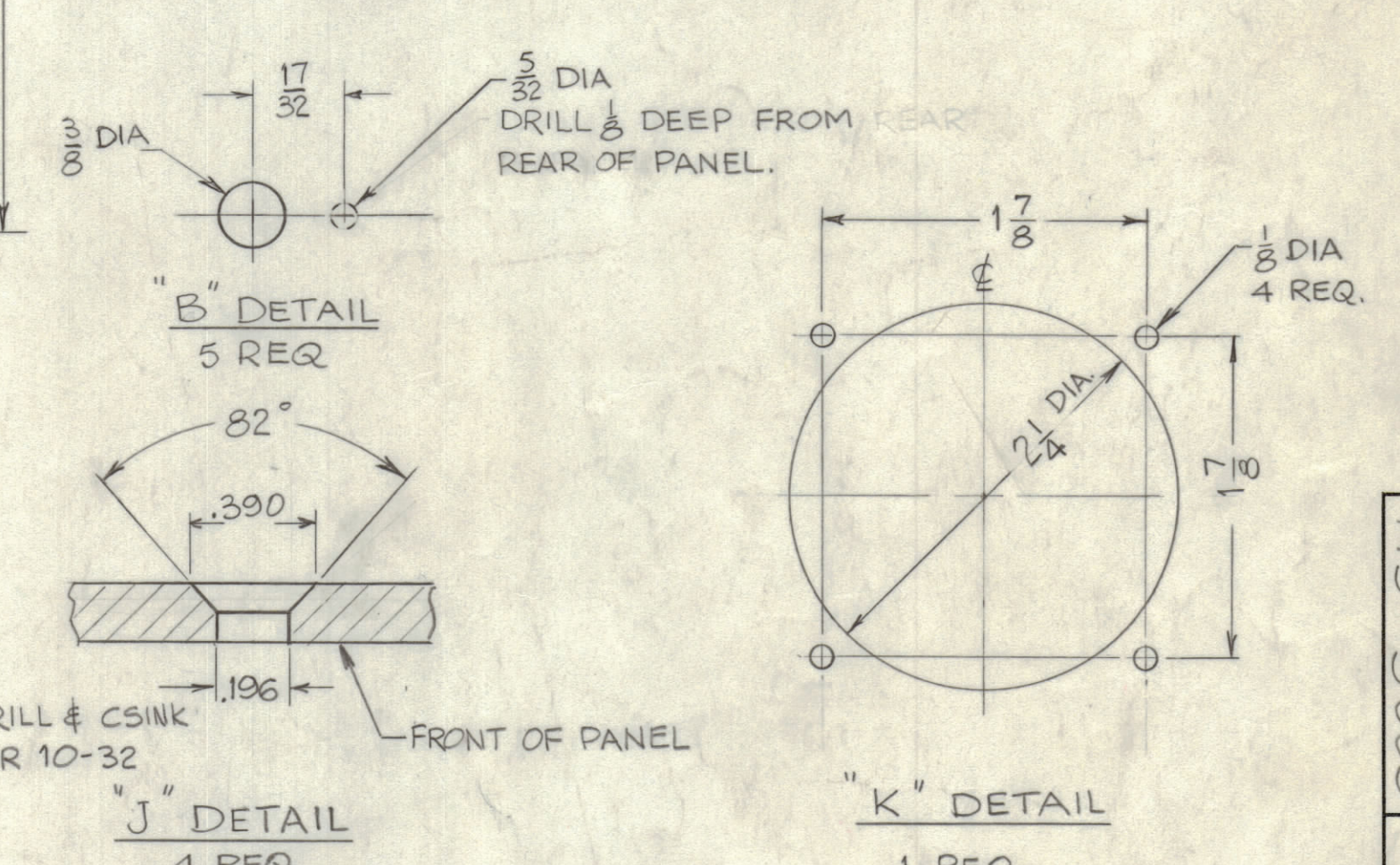
THE TECHNICAL MATERIEL CORPORATION  
MAMARONECK, NEW YORK

TOP



LEGEND

HOLE	DESCRIPTION	REQ.
A	.076 DIA	4
B	SEE DETAIL	7
C	1/64 DIA	4
D	3/8 DIA.	2
E	15/32 DIA	3
F	1/2 DIA.	1
G	1/16 DIA.	2
H	1/4 x 1/16 SLOT	4
J	SEE C'SINK DETAIL	4
K	SEE DETAIL	1
L	SEE DETAIL	1



FRONT OF PANEL SHOWN

- MACHINING:-
- 1-LATERAL BOW OF PANEL MUST BE KEPT TO .031 TOL.
  - 2-MILL ALL EDGES.
  - 3-HOLES MUST BE DRILLED
  - 4-ALL THREADED HOLES & HOLE DIA. MUST BE HELD AFTER ETCHING.
  - 5-PANEL MUST BE FREE OF ALL MACHINING MARKS, GOUGES & SCRATCHES, IF NECESSARY SAND FRONT WITH NO. 120 GRIT SANDPAPER.

- FINISH:-
- S404- YELLOW IRIDITE
  - S114 - ZINC CHROMATE PRIMER
  - S115- TMC SMOOTH GREY ENAMEL } FRONT & EDGES ONLY
  - OR
  - PRIME & PAINT PER CUSTOMER

MS-3003

REF: LD-1135

REQ'D.	ITEM	PART NUMBER	DESCRIPTION	SYMBOL
			STRUMMER	
LIST OF MATERIAL				
MATERIAL			THE TECHNICAL MATERIEL CORP. MAMARONECK, NEW YORK	
3/16 ALUMINUM			TITLE	
2024-T3			PANEL, FRONT, MACHINING SPU-2	
SCALE	MODEL USED ON	CODE	DATE	DATE
			3-2-62	11-27-62
UNLESS OTHERWISE SPECIFIED DIMENSIONS ARE IN INCHES AND INCLUDE CHEMICALLY APPLIED OR PLATED FINISHES			DATE	DATE
			11-16-62	11-27-62
THE CONTENTS OF THIS DRAWING ARE THE EXCLUSIVE PROPERTY OF THE TECHNICAL MATERIEL CORP. ITS UNAUTHORIZED USE OR REPRODUCTION IN WHOLE OR IN PART IS STRICTLY FORBIDDEN.			DATE	DATE
			11-27-62	11-27-62
DECIMALS	TOLERANCES	FRACTIONS	DATE	DATE
± .05	± 1/64	± 1/32	11-27-62	11-27-62
± .01	± 1/32	± 1/64		
± .005	± 0° 30'	± 0° 30'		

NOTES