

THE CONTENTS OF THIS DRAWING ARE THE EXCLUSIVE PROPERTY OF THE TECHNICAL MATERIEL CORP. ITS UNAUTHORIZED USE OR REPRODUCTION IN WHOLE OR IN PART IS STRICTLY FORBIDDEN.

REQ. PER UNIT

USED ON

MODEL

ASS'Y. NO.

DATE

1

HNF-1

7-26-62

MS-2915

HOLE

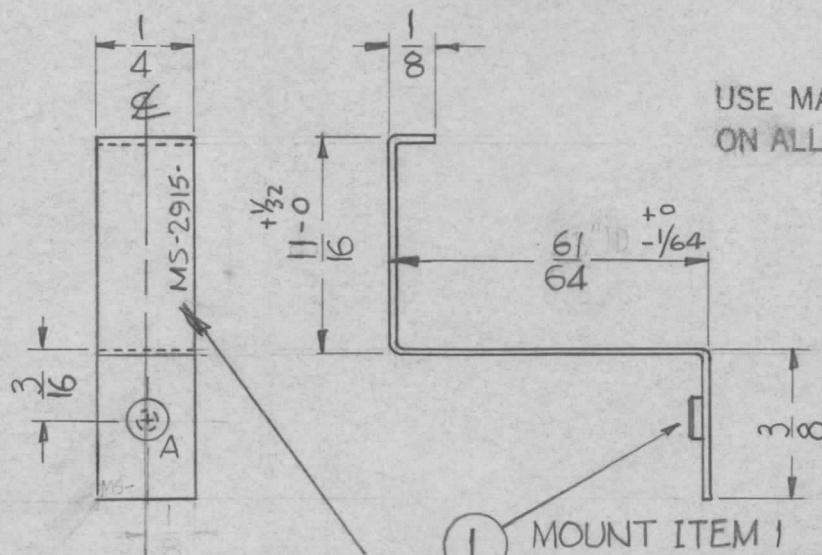
DESCRIPTION

REQ.

A

.161-.164 DIA

1



USE MATERIAL THICKNESS FOR MAX. RADIUS ON ALL BENDS UNLESS OTHERWISE SPECIFIED

MOUNT INSERTS AFTER FINISHING

METAL STAMP TMC PART NO 1/8 HIGH, GOTHIC AS SHOWN.

1 MOUNT ITEM 1 IN 'A' HOLE AS SHOWN AFTER FINISHING.

UNLESS OTHERWISE SPECIFIED DIMENSIONS ARE IN INCHES AND INCLUDE CHEMICALLY APPLIED OR PLATED FINISHES		
DECIMALS	TOLERANCES	FRACTIONS
.X ± .05		± 1/64
.XX ± .01		ANGLES
.XXX ± .005		± 0° 30'

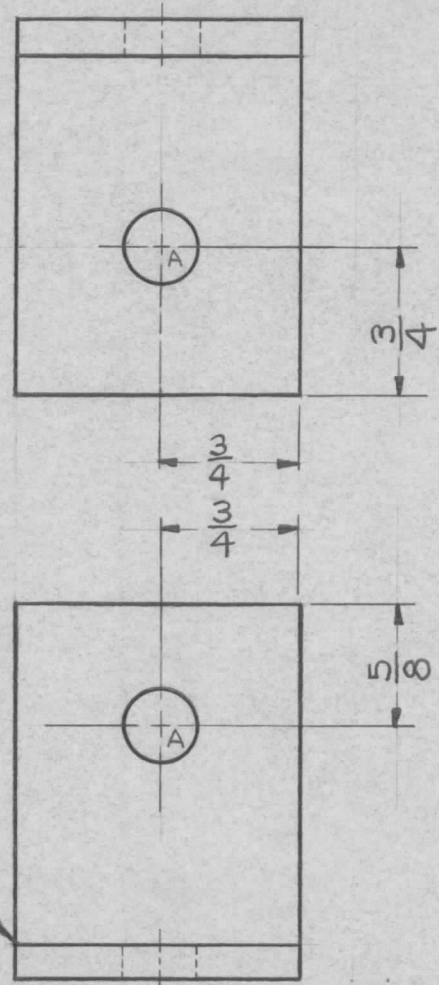
CUT HERE GUARANTEED 2-66

1	1	NT-129-440-4	NUT, ROUND, SWAGE TYPE		A					
REQ.	ITEM	PART NO.	GELLMAN DESCRIPTION		SYMBOL					
		.064	THE TECHNICAL MATERIEL CORP.							
		ALUMINUM	MAMARONECK, NEW YORK							
			RETAINER, CAPACITOR							
SYM	DESCRIPTION	DATE	CH. NO.	DRAFTS	CHECKER	ENG. APP.				
UNLESS OTHERWISE SPECIFIED: DIMENSIONS ARE IN INCHES TOLERANCES ON		SCALE: $\odot \times 2$				5052-H32				
FRAC. ± 1/64 DEC. ± .005 ANGLES ± 1/2°		MAXIMUM ALLOWABLE TOLERANCES HAVE BEEN DETERMINED AND ANY DEVIATIONS WILL BE CAUSE FOR REJECTION. REMOVE ALL BURRS AND SHARP EDGES				TYPE & TEMPER	HEATTREAT. SPEC.	DRAWN	CHECKED	FINAL APPROVAL
						S-404 YEL IRIDITE				MS-2915
						FINISH & SPEC. NO.	ELEC. DES. APP.	MECH. DES. APP.		



THE CONTENTS OF THIS DRAWING ARE THE EXCLUSIVE PROPERTY OF THE TECHNICAL MATERIEL CORP. ITS UNAUTHORIZED USE OR REPRODUCTION IN WHOLE OR IN PART IS STRICTLY FORBIDDEN.

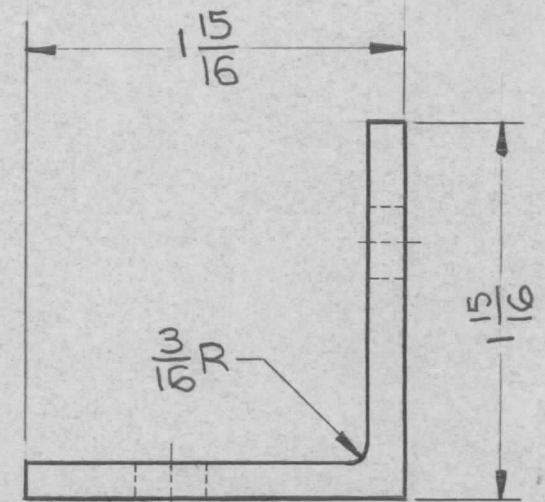
REQ. PER UNIT	USED ON			MS 2922	Ø
	MODEL	ASS'Y. NO.	DATE		
	SYM 2002		3-23-62		



A- $\frac{3}{8}$  DIA. 2 REQ.

UNLESS OTHERWISE SPECIFIED DIMENSIONS ARE IN INCHES AND INCLUDE CHEMICALLY APPLIED OR PLATED FINISHES		
DECIMALS	TOLERANCES	FRACTIONS
.X ± .05		± 1/64
.XX ± .01		ANGLES ± 0° 30'
.XXX ± .005		

CUT HERE GUARANTEED 2-66



1/16 CHAMFER ALL AROUND

REQ.	ITEM	PART NO.	DESCRIPTION			SYMBOL
		3/16	THE TECHNICAL MATERIEL CORP.			
		STOCK SIZE	MAMARONECK, NEW YORK			
		STEEL	BRACKET			
		MATERIAL	RACK MOUNTING			
Ø	ORIG PROD RELEASE	10/28/65	Ø			
SYM	DESCRIPTION	DATE	CH. NO.	DRAFTS	CHECKER	ENG. APP.
UNLESS OTHERWISE SPECIFIED: DIMENSIONS ARE IN INCHES TOLERANCES ON		SCALE: FULL		MAXIMUM ALLOWABLE TOLERANCES HAVE BEEN DETERMINED AND ANY DEVIATIONS WILL BE CAUSE FOR REJECTION. REMOVE ALL BURRS AND SHARP EDGES		
FRAC. ± 1/64 DEC. ± .005 ANGLES ± 1/2°				FINISH & SPEC. NO.		
				DRAWN		CHECKED
				R. Turchin		
				ELEC. DES. APP.		MECH. DES. APP.
						MS 2922 Ø



THE CONTENTS OF THIS DRAWING ARE THE EXCLUSIVE PROPERTY OF THE TECHNICAL MATERIEL CORP. ITS UNAUTHORIZED USE OR REPRODUCTION IN WHOLE OR IN PART IS STRICTLY FORBIDDEN.

REQ. PER UNIT

USED ON

MODEL

ASS'Y. NO.

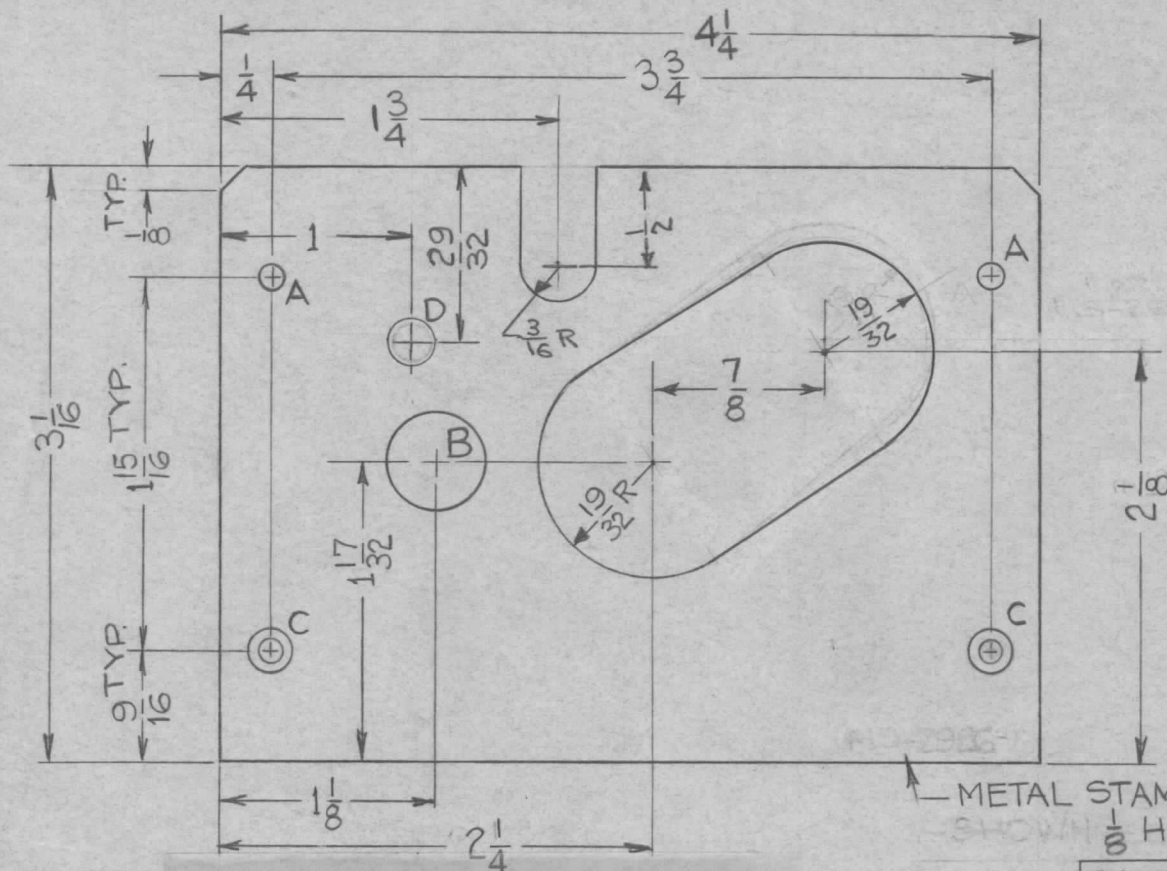
DATE

1

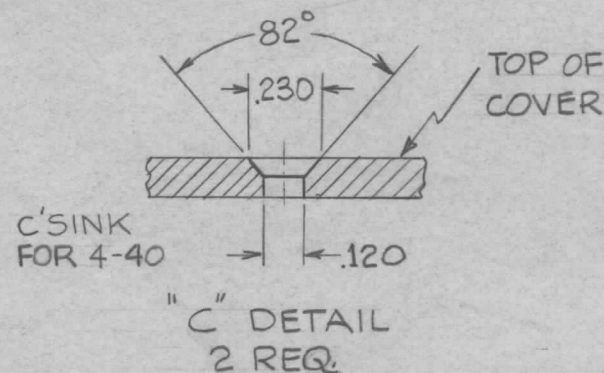
AFC-2A AFC-3

7-26-62

MS-2926 B



HOLE	DESCRIPTION	QUAN.
A	1/8 DIA.	2
B	1/2 DIA.	1
C	SEE DETAIL	2
D	1/4 DIA (SEE CHART)	1



METAL STAMP TMC PART NO. MS-2926-X-B  
SHOWN 1/8 HIGH GOTHIC, (SEE CHART FOR PART NO)

UNLESS OTHERWISE SPECIFIED  
DIMENSIONS ARE IN INCHES AND INCLUDE  
CHEMICALLY APPLIED OR PLATED FINISHES

DECIMALS	FRACTIONS
.X ± .05	± 1/64
.XX ± .01	ANGLES
.XXX ± .005	± 0° 30'

TOLERANCES

CUT HERE  
GUARANTEED  
2-66

TMC PART NO.	LD REF.	DESCRIPTION	REQ.
MS-2926-1	LD-1075	WITH "D" HOLE (AS SHOWN)	1
MS-2926-2	LD-1076	WITH/OUT "D" HOLE	1

REQ.	ITEM	PART NO.	WESCHLER DESCRIPTION	SYMBOL
		.064	THE TECHNICAL MATERIEL CORP. MAMARONECK, NEW YORK	
		ALUMINUM	COVER, OVEN HOUSING	
		MATERIAL		
		5052-H-32	V.R.R. <i>file</i>	<i>BP</i>
		TYPE & TEMPER	DRAWN	CHECKED
		HEAT TREAT. SPEC.		FINAL APPROVAL
		5404 YEL IRIDITE	<i>     </i>	MS-2926 B
		FINISH & SPEC. NO.	ELEC. DES. APP.	MECH. DES. APP.

UNLESS OTHERWISE SPECIFIED:  
DIMENSIONS ARE IN INCHES  
TOLERANCES ON  
FRAC. ± 1/64 DEC. ± .005 ANGLES ± 1/2°

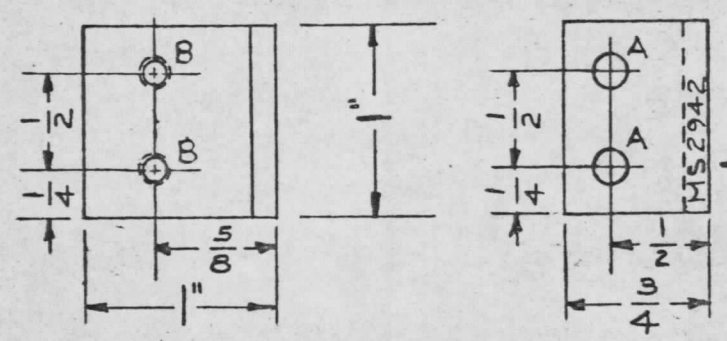
SCALE: DO NOT SCALE  
MAXIMUM ALLOWABLE TOLERANCES HAVE  
BEEN DETERMINED AND ANY DEVIATIONS  
WILL BE CAUSE FOR REJECTION.  
REMOVE ALL BURRS AND SHARP EDGES

THE CONTENTS OF THIS DRAWING ARE THE EXCLUSIVE PROPERTY OF THE TECHNICAL MATERIEL CORP. ITS UNAUTHORIZED USE OR REPRODUCTION IN WHOLE OR IN PART IS STRICTLY FORBIDDEN.

REQ. PER UNIT	USED ON		
	MODEL	ASS'Y. NO.	DATE
	TRX-1		3-28-62

MS-2942  $\emptyset$

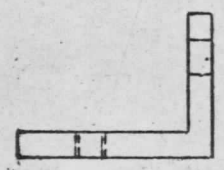
LEGEND		
HOLE	DESCRIPTION	REQ.
A	11/64 DIA.	2
B	DRILL & TAP 6-32	2



METAL STAMP TMC  
PART NO. 1/8 HIGH  
BLACK GOTHIC

AUG 16 1962

USE MATERIAL THICKNESS FOR MAX. RADIUS ON ALL BENDS UNLESS OTHERWISE SPECIFIED



UNLESS OTHERWISE SPECIFIED DIMENSIONS ARE IN INCHES AND INCLUDE CHEMICALLY APPLIED OR PLATED FINISHES	
DECIMALS .X ± .05 .XX ± .01 .XXX ± .005	FRACTIONS ± 1/64 ANGLES ± 0° 30'

CUT HERE  
GUARANTEED  
2-66

REQ.	ITEM	PART NO.	M. GELLMAN	DESCRIPTION	SYMBOL		
		1/8		THE TECHNICAL MATERIEL CORP. MAMARONECK, NEW YORK			
		STOCK SIZE		SUPPORT, ANGLE			
		ALUMINUM					
		MATERIAL					
			G. SENCEN				
UNLESS OTHERWISE SPECIFIED: DIMENSIONS ARE IN INCHES TOLERANCES ON FRAC ± 1/64 DEC. ± .005 ANGLES ± 1/2°		SCALE: MAXIMUM ALLOWABLE TOLERANCES HAVE BEEN DETERMINED AND ANY DEVIATIONS WILL BE CAUSE FOR REJECTION. REMOVE ALL BURRS AND SHARP EDGES	TYPE & TEMPER	HEAT TREAT. SPEC.	DRAWN	CHECKED	FINAL APPROVAL
							MS-2942 $\emptyset$

$\emptyset$  ORIG PROD. RELEASE 10/28/65  
1 B' HOLE WAS A HOLE, SIDE VIEW ADDED 7-10-62 # SRG

10/28/65  
MS-2942  $\emptyset$





THE CONTENTS OF THIS DRAWING ARE THE EXCLUSIVE PROPERTY OF THE TECHNICAL MATERIEL CORP. ITS UNAUTHORIZED USE OR REPRODUCTION IN WHOLE OR IN PART IS STRICTLY FORBIDDEN.

REQ. PER UNIT

USED ON

MODEL

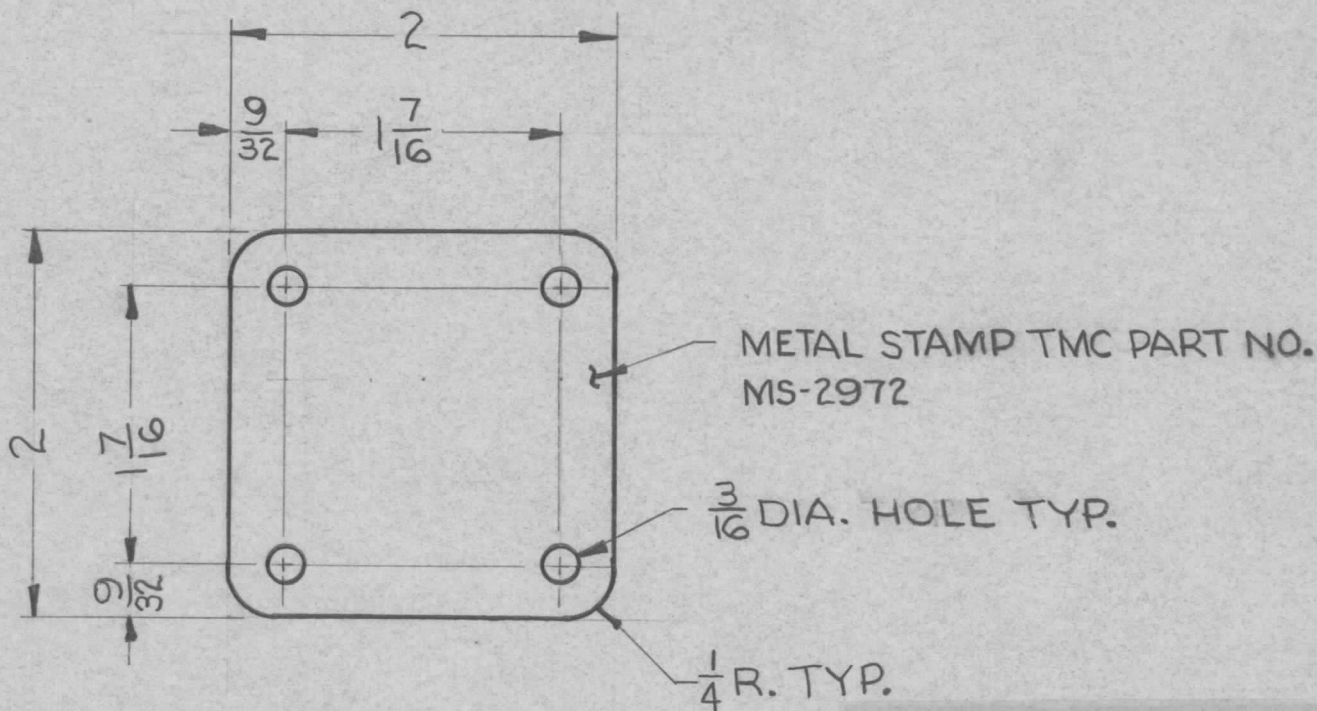
ASS'Y. NO.

DATE

QDP SERIES

5-14-62

MS-2972



FINISHING NOTES:

S404 IRIDITE

S114 ZINC CHROMATE PRIMER

S115 TMC SMOOTH GREY ENAMEL

OR' PRIME & PAINT TO CUST. SPEC.

FRONT & EDGES ONLY

UNLESS OTHERWISE SPECIFIED DIMENSIONS ARE IN INCHES AND INCLUDE CHEMICALLY APPLIED OR PLATED FINISHES		
DECIMALS	TOLERANCES	FRACTIONS
.X ± .05		± 1/64
.XX ± .01		ANGLES
.XXX ± .005		± 0° 30'

CUT HERE GUARANTEED 2-66

						REQ. ITEM	PART NO.	PRITCHARD	DESCRIPTION	SYMBOL	
							.064		THE TECHNICAL MATERIEL CORP.		
							STOCK SIZE		MAMARONECK, NEW YORK		
							ALUMINIUM		COVER, BLANK		
							MATERIAL		QDL		
SYM	DESCRIPTION	DATE	CH. NO.	DRAFTS	CHECKER	ENG. APP.	2024-T3	R. Turchin	H. De	BP	
UNLESS OTHERWISE SPECIFIED: DIMENSIONS ARE IN INCHES. TOLERANCES ON		SCALE: DO NOT SCALE		MAXIMUM ALLOWABLE TOLERANCES HAVE BEEN DETERMINED AND ANY DEVIATIONS WILL BE CAUSE FOR REJECTION. REMOVE ALL BURRS AND SHARP EDGES			TYPE & TEMPER	HEAT TREAT. SPEC.	DRAWN	CHECKED	FINAL APPROVAL
FRAC. ± 1/64 DEC. ± .005 ANGLES ± 1/2°					SEE FINISHING NOTES				MS-2972		
						FINISH & SPEC. NO.	ELEC. DES. APP.	MECH. DES. APP.			





THE CONTENTS OF THIS DRAWING ARE THE EXCLUSIVE PROPERTY OF THE TECHNICAL MATERIEL CORP. ITS UNAUTHORIZED USE OR REPRODUCTION IN WHOLE OR IN PART IS STRICTLY FORBIDDEN.

REQ. PER UNIT

USED ON

MODEL

ASS'Y. NO.

DATE

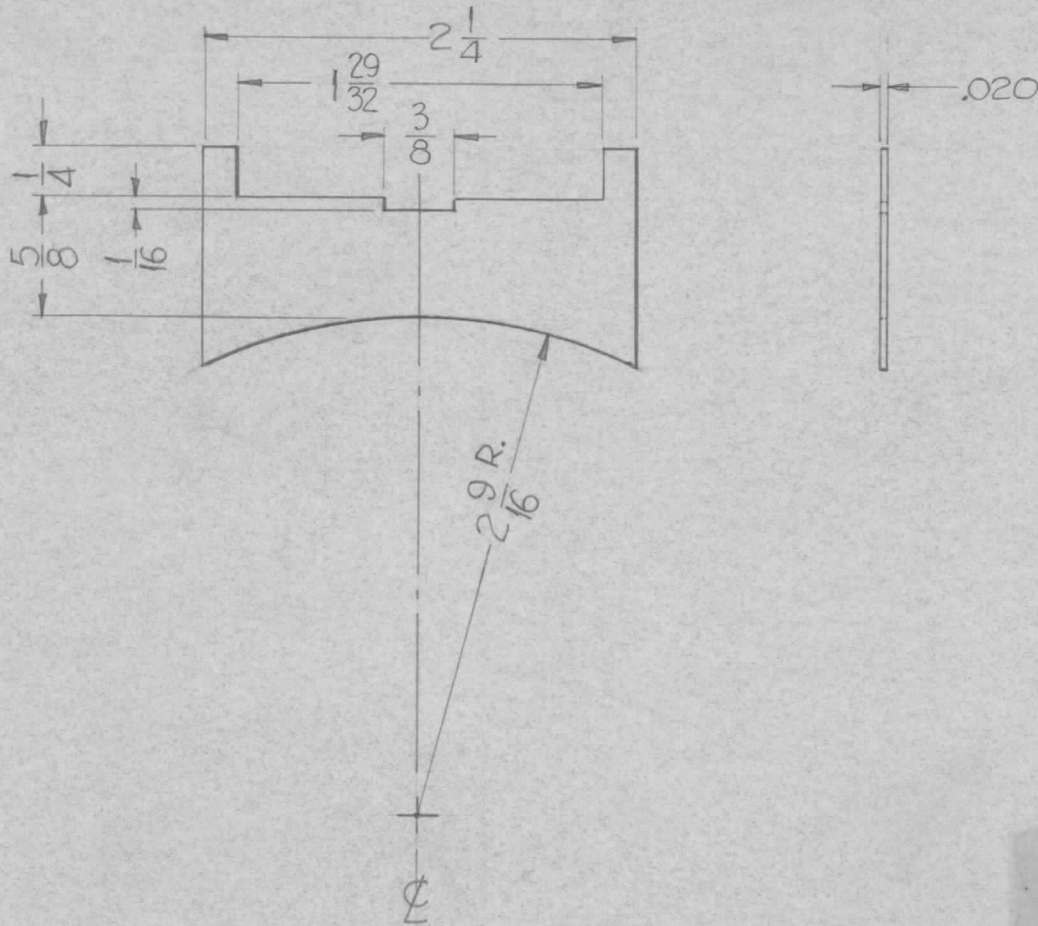
1

HFR-1/T

A-2522

5-24-62

MS-2989



UNLESS OTHERWISE SPECIFIED  
DIMENSIONS ARE IN INCHES AND INCLUDE  
CHEMICALLY APPLIED OR PLATED FINISHES

DECIMALS	FRACTIONS
.X ± .05	± 1/64
.XX ± .01	ANGLES
.XXX ± .005	± 0° 30'

TOLERANCES

CUT HERE  
GUARANTEED  
2-66

SYM	DESCRIPTION	DATE	CH. NO.	DRAFTS	CHECKER	ENG. APP.	REQ. ITEM	PART NO.	ANGER	DESCRIPTION	SYMBOL	
								.020		THE TECHNICAL MATERIEL CORP. MAMARONECK, NEW YORK	SHIELD BAFFLE	
								STOCK SIZE				
								BRASS				
								MATERIAL				
								1/2HARD		D. J. Mar	file	
UNLESS OTHERWISE SPECIFIED: DIMENSIONS ARE IN INCHES. TOLERANCES ON FRAC. ± 1/64 DEC. ± .005 ANGLES ± 1/2°							SCALE: FULL					
MAXIMUM ALLOWABLE TOLERANCES HAVE BEEN DETERMINED AND ANY DEVIATIONS WILL BE CAUSE FOR REJECTION. REMOVE ALL BURRS AND SHARP EDGES												
								SILVER PLATE S-245 .0003		J. ANGER	MS-2989	
								FINISH & SPEC. NO.	ELEC. DES. APP.	MECH. DES. APP.		

THE CONTENTS OF THIS DRAWING ARE THE EXCLUSIVE PROPERTY OF THE TECHNICAL MATERIEL CORP. ITS UNAUTHORIZED USE OR REPRODUCTION IN WHOLE OR IN PART IS STRICTLY FORBIDDEN.

REQ. PER UNIT

USED ON

MODEL

ASS'Y. NO.

DATE

1

HR-1/T

7-26-62

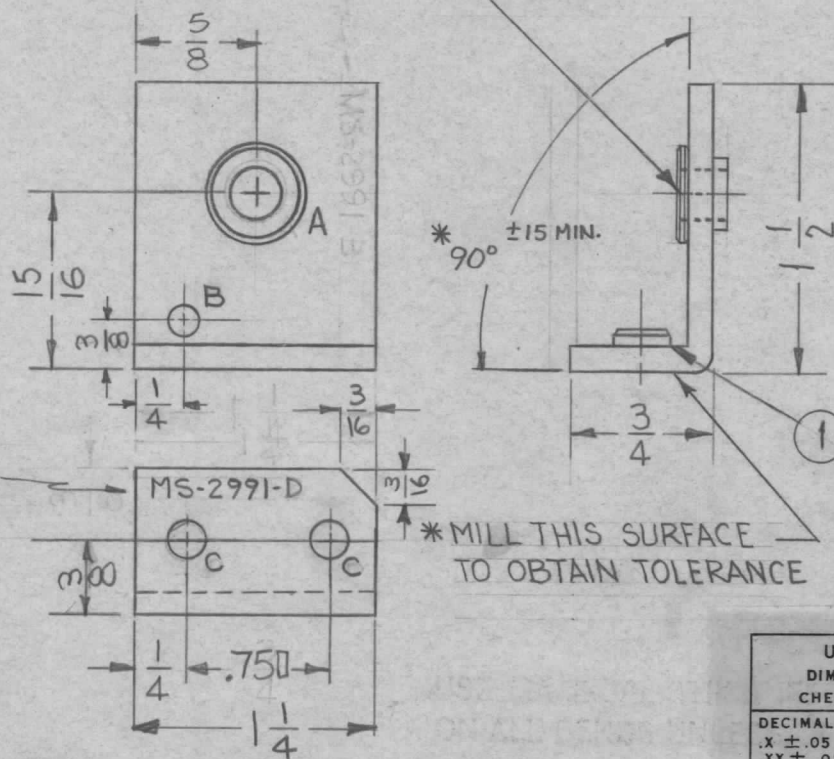
MS-2991

D

LEGEND

HOLE	DESCRIPTION	REQ.
A	.374 ± .001 / .000	1
B	.159 DIA.	1
C	.194-.191 DIA.	2

② MOUNT ITEM (2) IN (1) "A" HOLE AS SHOWN AFTER FINISHING.



METAL STAMP TMC PART NO. 1/8 HIGH, GOTHIC.

① MOUNT ITEM 1 IN ALL "B" HOLES AS SHOWN AFTER FINISH

\*MILL THIS SURFACE TO OBTAIN TOLERANCE

UNLESS OTHERWISE SPECIFIED DIMENSIONS ARE IN INCHES AND INCLUDE CHEMICALLY APPLIED OR PLATED FINISHES	
DECIMALS	FRACTIONS
.X ± .05	± 1/64
.XX ± .01	ANGLES
.XXX ± .005	± 0° 30'

CUT HERE GUARANTEED 2-66

1	2	BB-118-3	BEARING - FLANGE TYPE	A
2	1	NT-129-632-6	NUT, ROUND, SWAGE TYPE	C

D	3/16 x 3/16 MOUNTING LIP ADDED	7-16-63	9570			
C	DELETED BENDING NOTE, ADDED MILLING NOTE MATERIAL SIZE & TEMPER WAS 5052-H32 ALUM 1/8 THK	4-16-63	8805			
B	ITEM (2) TOLERANCE ADDED (1) "A" HOLE WAS 5/16 DIA.	1-2-63	7945			
A	ITEM 1 WAS NT-129-632-4 MODEL WAS HR	8-30-62	7159			
SYM	DESCRIPTION	DATE	CH. NO.	DRAFTS	CHECKER	ENG. APP.

REQ.	ITEM	PART NO.	KRUY	DESCRIPTION	SYMBOL
				THE TECHNICAL MATERIEL CORP. MAMARONECK, NEW YORK	
				BRACKET, BEVEL SUPPORT	
				#1	
				6063-T5	
				TYPE & TEMPER	HEAT TREAT. SPEC.
				S404 YEL. IRIDITE	
				FINISH & SPEC. NO.	ELEC. DES. APP.
					MECH. DES. APP.
					MS-2991 D

UNLESS OTHERWISE SPECIFIED:  
DIMENSIONS ARE IN INCHES  
TOLERANCES ON  
FRAC. ± 1/64 DEC. ± .005 ANGLES ± 1/2°

SCALE: #  
MAXIMUM ALLOWABLE TOLERANCES HAVE BEEN DETERMINED AND ANY DEVIATIONS WILL BE CAUSE FOR REJECTION.  
REMOVE ALL BURRS AND SHARP EDGES



THE CONTENTS OF THIS DRAWING ARE THE EXCLUSIVE PROPERTY OF THE TECHNICAL MATERIEL CORP. ITS UNAUTHORIZED USE OR REPRODUCTION IN WHOLE OR IN PART IS STRICTLY FORBIDDEN.

REQ. PER UNIT

USED ON

MODEL

ASS'Y. NO.

DATE

1

HFR-1/T

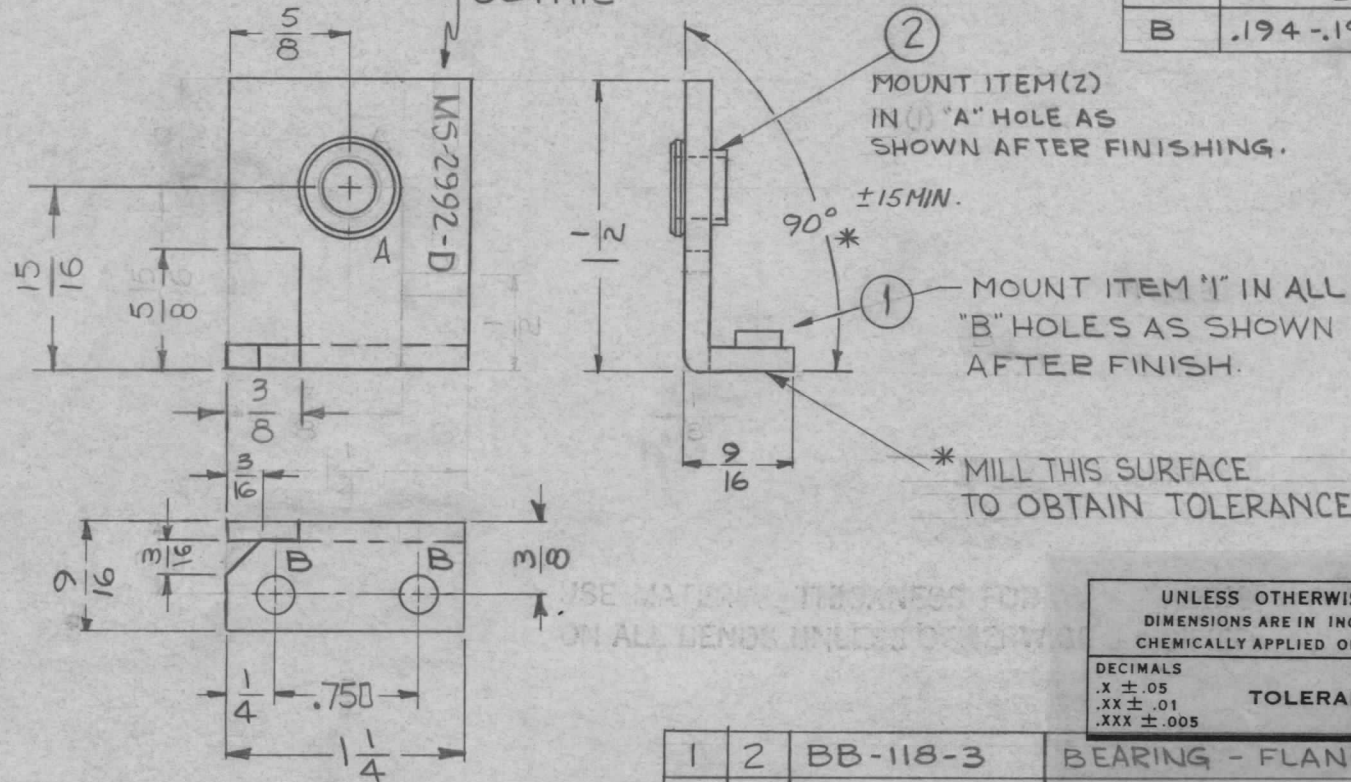
7-26-62

MS-2992 D

LEGEND

HOLE	DESCRIPTION	REQ.
A	.374 $\begin{smallmatrix} +.001 \\ -.000 \end{smallmatrix}$	1
B	.194-.191 DIA.	2

METAL STAMP TMC  
PART NO. 1/8 HIGH,  
GOTHIC



UNLESS OTHERWISE SPECIFIED  
DIMENSIONS ARE IN INCHES AND INCLUDE  
CHEMICALLY APPLIED OR PLATED FINISHES

DECIMALS	TOLERANCES	FRACTIONS
.X ± .05		± 1/64
.XX ± .01		ANGLES ± 0° 30'
.XXX ± .005		

CUT HERE  
GUARANTEED  
2-66

1	2	BB-118-3	BEARING - FLANGE TYPE	A
2	1	NT-129-632-6	NUT, ROUND, SWAGE TYPE	B

SYM	DESCRIPTION	DATE	CH. NO.	DRAFTS	CHECKER	ENG. APP.
D	3/16 x 3/16 MOUNTING LIP ADDED	7-16-63	9571			
C	DELETED BENDING NOTE, ADDED MILLING NOTE MATERIAL, SIZE, TYPE WERE ALUM. # 5062-H52	4-16-63	8805			
B	ITEM (2) TOLERANCE ADDED (1) "A" HOLE WAS 5/16 DIA	1-2-63	7945			
A	ITEM 1 WAS NT-129-632-4, 1 REQ MODEL WAS HFR	8-30-62	7159	G.S.		

REQ.	ITEM	PART NO.	DESCRIPTION	SYMBOL
			KRUY	
THE TECHNICAL MATERIEL CORP. MAMARONECK, NEW YORK				
BRACKET, BEVEL SUPPORT #2				
6063-T5		<div style="display: flex; justify-content: space-between;"> <span>g. Sencan</span> <span>g. de</span> <span>BP</span> </div>		
S404 YEL. IRIDITE		<div style="display: flex; justify-content: space-between;"> <span>TAK</span> <span>MS-2992 D</span> </div>		
FINISH & SPEC. NO.		ELEC. DES. APP.	MECH. DES. APP.	

UNLESS OTHERWISE SPECIFIED:  
DIMENSIONS ARE IN INCHES  
TOLERANCES ON  
FRAC. ± 1/64 DEC. ± .005 ANGLES ± 1/2°

SCALE: #  
MAXIMUM ALLOWABLE TOLERANCES HAVE BEEN DETERMINED AND ANY DEVIATIONS WILL BE CAUSE FOR REJECTION.  
REMOVE ALL BURRS AND SHARP EDGES



THE CONTENTS OF THIS DRAWING ARE THE EXCLUSIVE PROPERTY OF THE TECHNICAL MATERIEL CORP. ITS UNAUTHORIZED USE OR REPRODUCTION IN WHOLE OR IN PART IS STRICTLY FORBIDDEN.

REQ. PER UNIT

1

USED ON

MODEL

HFR-1

ASS'Y. NO.

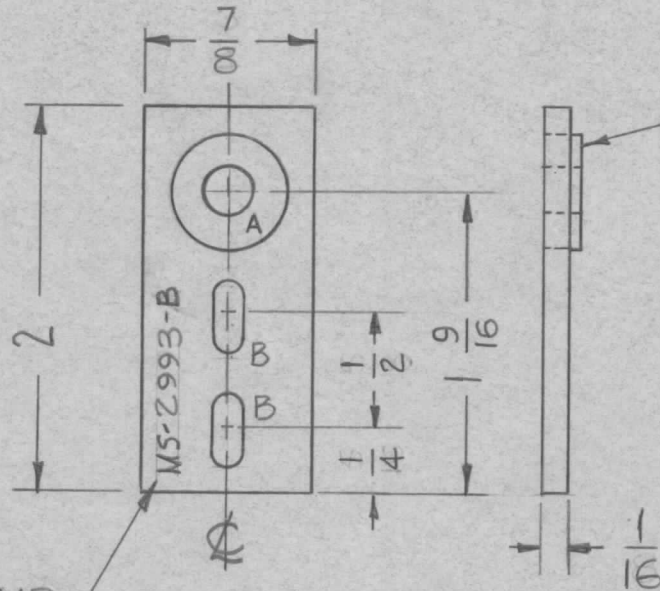
DATE

7-26-62

MS-2993 B

A-.6249-.6246 1 REQ

B-3/8 x 3/16 2 REQ



① MOUNT IN ALL "A" HOLES AS SHOWN. AFTER FINISH

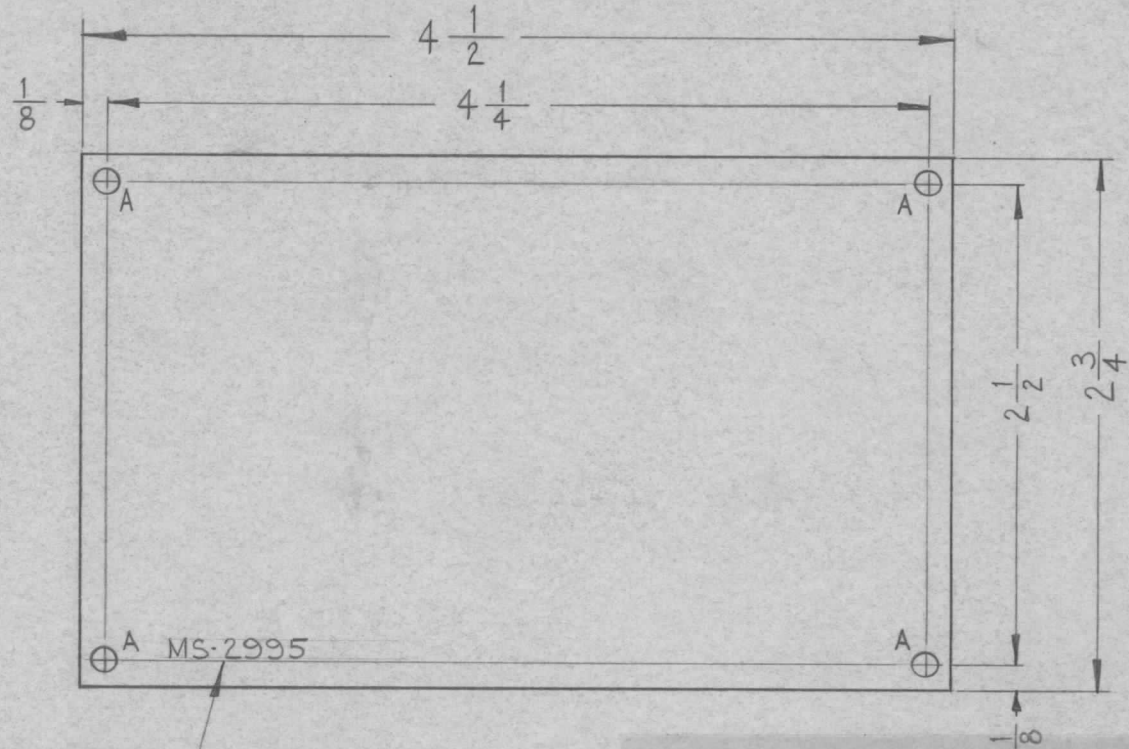
METAL STAMP  
TMC PART NO  
1/8 HIGH GOTHIC

1	1	BB-126-5	RACE, BEARING			A			
REQ.	ITEM	PART NO.	KRUZ			DESCRIPTION	SYMBOL		
B	ITEM (1) WAS BB-126-1	12-28-62 7951	1/16			THE TECHNICAL MATERIEL CORP. MAMARONECK, NEW YORK			
A	1/4 WAS 5/16, 1/2 WAS 5/8	12-7-62 7790	STAINLESS STEEL			PLATE, SHAFT SUPPORT			
SYM	DESCRIPTION	DATE	CH. NO.	DRAFTS	CHECKER	ENG. APP.	MATERIAL		
UNLESS OTHERWISE SPECIFIED: DIMENSIONS ARE IN INCHES TOLERANCES ON FRAC. ± 1/64 DEC. ± .005 ANGLES ± 1/2°		SCALE: Do Not Scale					#303	RUZZO	
		MAXIMUM ALLOWABLE TOLERANCES HAVE BEEN DETERMINED AND ANY DEVIATIONS WILL BE CAUSE FOR REJECTION. REMOVE ALL BURRS AND SHARP EDGES			TYPE & TEMPER	HEAT TREAT. SPEC.	DRAWN	CHECKED	FINAL APPROVAL
					S104 PASSIVATE		YAK		MS-2993 B
					FINISH & SPEC. NO.	ELEC. DES. APP.	MECH. DES. APP.		

THE CONTENTS OF THIS DRAWING ARE THE EXCLUSIVE PROPERTY OF THE TECHNICAL MATERIEL CORP. ITS UNAUTHORIZED USE OR REPRODUCTION IN WHOLE OR IN PART IS STRICTLY FORBIDDEN.

REQ. PER UNIT	USED ON			MS-2995
	MODEL	ASS'Y. NO.	DATE	
1	HFS-1	3500	8-15-62	

LEGEND		
HOLE	DESCRIPTION	REQ.
A	1/8 DIA.	4



METAL STAMP TMC PART NO. 1/8 HIGH GOTHIC AS SHOWN.

REF: LD-1107 (1)

UNLESS OTHERWISE SPECIFIED DIMENSIONS ARE IN INCHES AND INCLUDE CHEMICALLY APPLIED OR PLATED FINISHES		
DECIMALS	TOLERANCES	FRACTIONS
.X ± .05		± 1/64
.XX ± .01		ANGLES ± 0° 30'
.XXX ± .005		

CUT HERE GUARANTEED 2-66

SYM	DESCRIPTION	DATE	CH. NO.	DRAFTS	CHECKER	ENG. APP.	REQ. ITEM	PART NO.	J. STRUMER	DESCRIPTION	SYMBOL
							.051			THE TECHNICAL MATERIEL CORP.	
							STOCK SIZE			MAMARONECK, NEW YORK	
							ALUMINUM			PLATE, CAPACITOR DESIGNATION	
							MATERIAL			(3500 DECK)	
	UNLESS OTHERWISE SPECIFIED: DIMENSIONS ARE IN INCHES TOLERANCES ON FRAC. ± 1/64 DEC. ± .005 ANGLES ± 1/2°						SCALE: DO NOT SCALE	5052-H32	M.A.F.	JDe	
							MAXIMUM ALLOWABLE TOLERANCES HAVE BEEN DETERMINED AND ANY DEVIATIONS WILL BE CAUSE FOR REJECTION. REMOVE ALL BURRS AND SHARP EDGES	TYPE & TEMPER			
								HEAT TREAT. SPEC.			
								S404 YEL. IRIDITE	JMA	JMA	MS-2995
								FINISH & SPEC. NO.			
									ELEC. DES. APP.	MECH. DES. APP.	



THE CONTENTS OF THIS DRAWING ARE THE EXCLUSIVE PROPERTY OF THE TECHNICAL MATERIEL CORP. ITS UNAUTHORIZED USE OR REPRODUCTION IN WHOLE OR IN PART IS STRICTLY FORBIDDEN.

REQ. PER UNIT

MODEL

USED ON

ASS'Y. NO.

DATE

1

HFR-1

AX-377

7-26-62

MS-2997

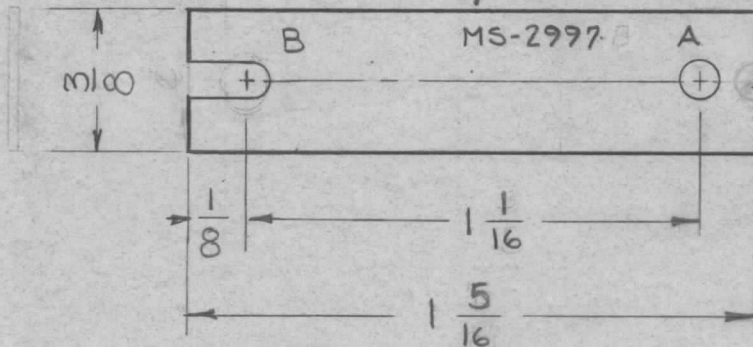
C

LEGEND

HOLE	DESCRIPTION	REQ.
A	3/32 DIA	1
B	3/32 X 3/16 SLOT	1

STAMP TMC PART NO

1/8 HIGH, GOTHIC W/LATEST REV. LETTER



UNLESS OTHERWISE SPECIFIED DIMENSIONS ARE IN INCHES AND INCLUDE CHEMICALLY APPLIED OR PLATED FINISHES	
DECIMALS	FRACTIONS
.X ± .05	± 1/64
.XX ± .01	ANGLES
.XXX ± .005	± 0° 30'

CUT HERE GUARANTEED 2-66

C	DIM. 1/16 WAS 3/16 - DIM. 15/16 WAS 17/16 - NOTCH 3/4 R. DELETED	4-1466	16101	G.D.L.	MS	REQ.	ITEM	PART NO.	KRUY	DESCRIPTION	SYMBOL
B	"B" SLOT WAS 3/32 X 1/8	12-5-62	7785	GH	JR			.012		THE TECHNICAL MATERIEL CORP. MAMARONECK, NEW YORK	
A	3/64 R. ADDED, 1-7/16 WAS 1-5/8 1-3/16 WAS 1-3/8 TYPE & TEMPER WAS #302	8-2662	7148	GS	JR			STAINLESS, STEEL		STRAP, ADJUSTABLE	
SYM	DESCRIPTION	DATE	CH. NO.	DRAFTS	CHECKER	ENG. APP.					
UNLESS OTHERWISE SPECIFIED: DIMENSIONS ARE IN INCHES TOLERANCES ON		SCALE: 1:1		MAXIMUM ALLOWABLE TOLERANCES HAVE BEEN DETERMINED AND ANY DEVIATIONS WILL BE CAUSE FOR REJECTION. REMOVE ALL BURRS AND SHARP EDGES		TYPE & TEMPER		HEAT TREAT. SPEC.	DRAWN	CHECKED	FINAL APPROVAL
FRAC. ± 1/64 DEC. ± .005 ANGLES ± 1/2°						S104 PASSIVATE					MS-2997 C
						FINISH & SPEC. NO.		ELEC. DES. APP.	MECH. DES. APP.		



THE CONTENTS OF THIS DRAWING ARE THE EXCLUSIVE PROPERTY OF THE TECHNICAL MATERIEL CORP. ITS UNAUTHORIZED USE OR REPRODUCTION IN WHOLE OR IN PART IS STRICTLY FORBIDDEN.

REQ. PER UNIT

USED ON

MODEL

ASS'Y. NO.

DATE

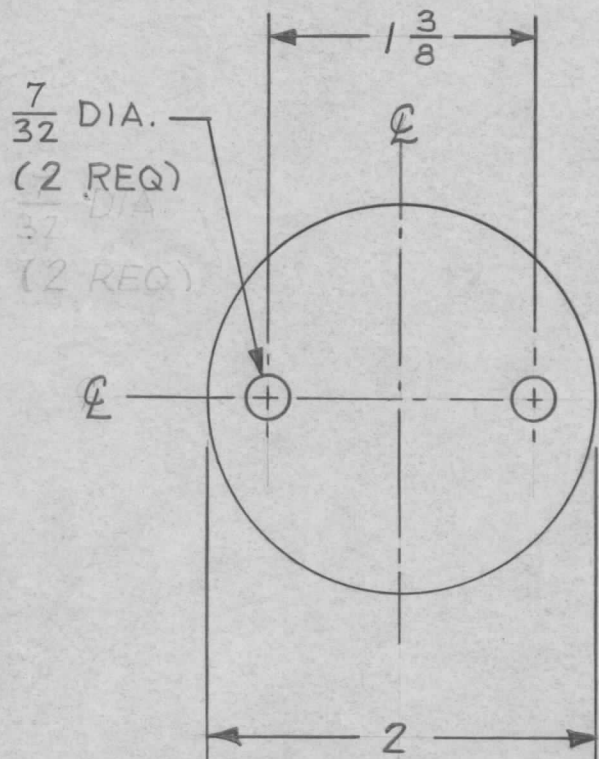
1

RAK-12

7-24-62

MS-2999

A



FINISH NOTE

S114-ZINC CHROMATE PRIMER  
S520-BLUE-GRAY TEXTURED VINYL PAINT.

UNLESS OTHERWISE SPECIFIED  
DIMENSIONS ARE IN INCHES AND INCLUDE  
CHEMICALLY APPLIED OR PLATED FINISHES

DECIMALS	FRACTIONS
.X ± .05	± 1/64
.XX ± .01	ANGLES
.XXX ± .005	± 0° 30'

TOLERANCES

CUT HERE  
GUARANTEED  
2-66

REQ.	ITEM	PART NO.	R. KOHN			DESCRIPTION	S DE MARCO	SYMBOL
		12 GA.				THE TECHNICAL MATERIEL CORP.		
		STOCK SIZE				MAMARONECK, NEW YORK		
A	S 520 WAS S220 FINISH	6-1764	11556	A.M.	<i>[Signature]</i>	ALUMINUM		
						PLATE, COVER		
SYM	DESCRIPTION	DATE	CH. NO.	DRAFTS	CHECKER	ENG. APP.		
UNLESS OTHERWISE SPECIFIED: DIMENSIONS ARE IN INCHES TOLERANCES ON FRAC. ± 1/64 DEC. ± .005 ANGLES ± 1/2°		SCALE: FULL (DO NOT SCALE)		5052-H32		M. TANTILLO 7-17-62	<i>[Signature]</i>	<i>[Signature]</i>
MAXIMUM ALLOWABLE TOLERANCES HAVE BEEN DETERMINED AND ANY DEVIATIONS WILL BE CAUSE FOR REJECTION. REMOVE ALL BURRS AND SHARP EDGES				TYPE & TEMPER	HEAT TREAT. SPEC.	DRAWN	CHECKED	FINAL APPROVAL
				SEE NOTE		R. KOHN	R. KOHN	MS-2999 A
				FINISH & SPEC. NO.	ELEC. DES. APP.	MECH. DES. APP.		