

THE CONTENTS OF THIS DRAWING ARE THE EXCLUSIVE PROPERTY OF THE TECHNICAL MATERIEL CORP. ITS UNAUTHORIZED USE OR REPRODUCTION IN WHOLE OR IN PART IS STRICTLY FORBIDDEN.

REQ. PER UNIT

USED ON

MODEL

ASS'Y. NO.

DATE

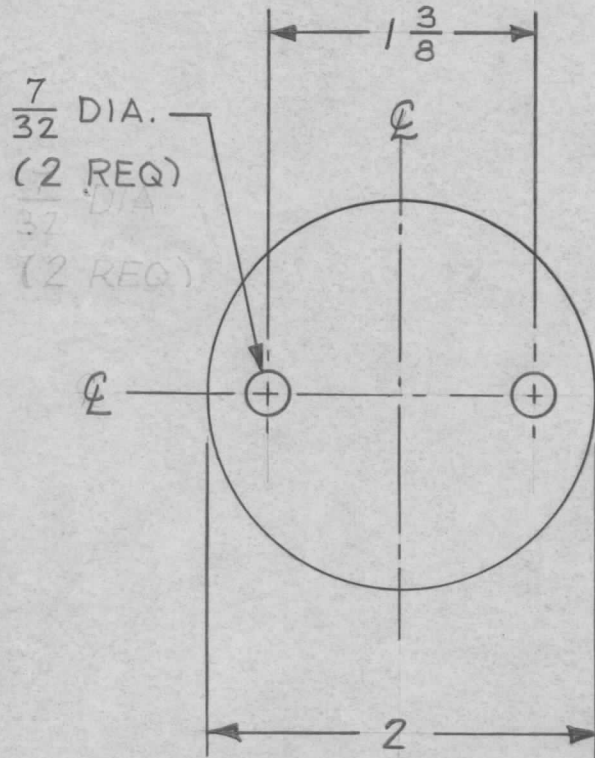
1

RAK-12

7-24-62

MS-2999

A



FINISH NOTE

S114-ZINC CHROMATE PRIMER
S520-BLUE-GRAY TEXTURED VINYL PAINT.

| | |
|---|---|
| UNLESS OTHERWISE SPECIFIED DIMENSIONS ARE IN INCHES AND INCLUDE CHEMICALLY APPLIED OR PLATED FINISHES | |
| DECIMALS .X ± .05 .XX ± .01 .XXX ± .005 | FRACTIONS ± 1/64 ANGLES ± 0° 30' |
| TOLERANCES | |

CUT HERE
GUARANTEED
2-66

| | | | | | | | | |
|---|-----------------------|----------------------------|-------------------|-----------------|--------------------|------------------------------|--------------------|--------------------|
| REQ. | ITEM | PART NO. | R. KOHN | | | DESCRIPTION | S DE MARCO | SYMBOL |
| | | 12 GA. | | | | THE TECHNICAL MATERIEL CORP. | | |
| | | STOCK SIZE | | | | MAMARONECK, NEW YORK | | |
| A | S 520 WAS S220 FINISH | 6-1764 | 11556 | A.M. | <i>[Signature]</i> | ALUMINUM | | |
| | | | | | | PLATE, COVER | | |
| SYM | DESCRIPTION | DATE | CH. NO. | DRAFTS | CHECKER | ENG. APP. | | |
| UNLESS OTHERWISE SPECIFIED: DIMENSIONS ARE IN INCHES TOLERANCES ON FRAC. ± 1/64 DEC. ± .005 ANGLES ± 1/2° | | SCALE: FULL (DO NOT SCALE) | | 5052-H32 | | M. TANTILLO 7-17-62 | <i>[Signature]</i> | <i>[Signature]</i> |
| MAXIMUM ALLOWABLE TOLERANCES HAVE BEEN DETERMINED AND ANY DEVIATIONS WILL BE CAUSE FOR REJECTION. REMOVE ALL BURRS AND SHARP EDGES | | TYPE & TEMPER | HEAT TREAT. SPEC. | DRAWN | CHECKED | FINAL APPROVAL | | |
| | | SEE NOTE | | R. KOHN | R. KOHN | MS-2999 A | | |
| | | FINISH & SPEC. NO. | ELEC. DES. APP. | MECH. DES. APP. | | | | |