

THE CONTENTS OF THIS DRAWING ARE THE EXCLUSIVE PROPERTY OF THE TECHNICAL MATERIEL CORP. ITS UNAUTHORIZED USE OR REPRODUCTION IN WHOLE OR IN PART IS STRICTLY FORBIDDEN.

REQ. PER UNIT

USED ON

MODEL

ASS'Y. NO.

DATE

1

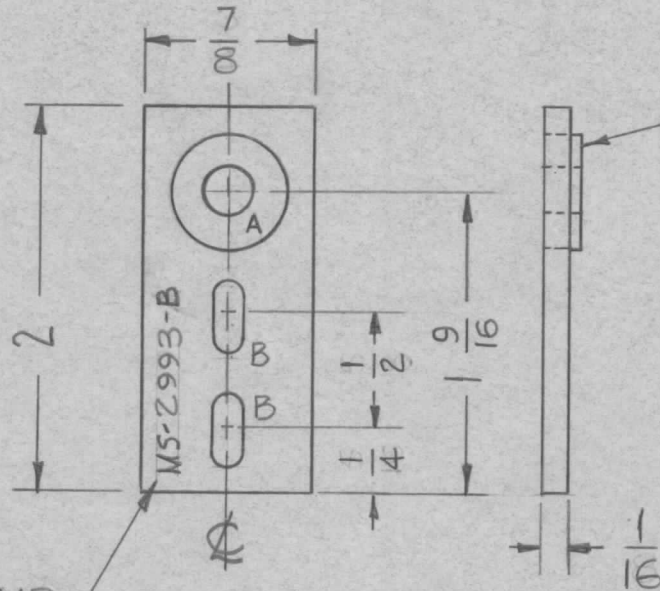
HFR-1

7-26-62

MS-2993 B

A-.6249-.6246 1 REQ

B-3/8 x 3/16 2 REQ



① MOUNT IN ALL "A" HOLES AS SHOWN. AFTER FINISH

METAL STAMP  
TMC PART NO  
1/8 HIGH GOTHIC

							1	1	BB-126-5	RACE, BEARING	A		
							REQ.	ITEM	PART NO.	KRUY	DESCRIPTION	SYMBOL	
									1/16	THE TECHNICAL MATERIEL CORP. MAMARONECK, NEW YORK			
									STAINLESS STEEL	PLATE, SHAFT SUPPORT			
									MATERIAL	#1			
									#303	RUZZO	HDE	BP	
									TYPE & TEMPER	HEAT TREAT. SPEC.	DRAWN	CHECKED	FINAL APPROVAL
									S104 PASSIVATE		YAK		MS-2993 B
									FINISH & SPEC. NO.	ELEC. DES. APP.	MECH. DES. APP.		

UNLESS OTHERWISE SPECIFIED:  
DIMENSIONS ARE IN INCHES  
TOLERANCES ON  
FRAC. ± 1/64 DEC. ± .005 ANGLES ± 1/2°

SCALE: Do Not Scale  
MAXIMUM ALLOWABLE TOLERANCES HAVE BEEN DETERMINED AND ANY DEVIATIONS WILL BE CAUSE FOR REJECTION. REMOVE ALL BURRS AND SHARP EDGES