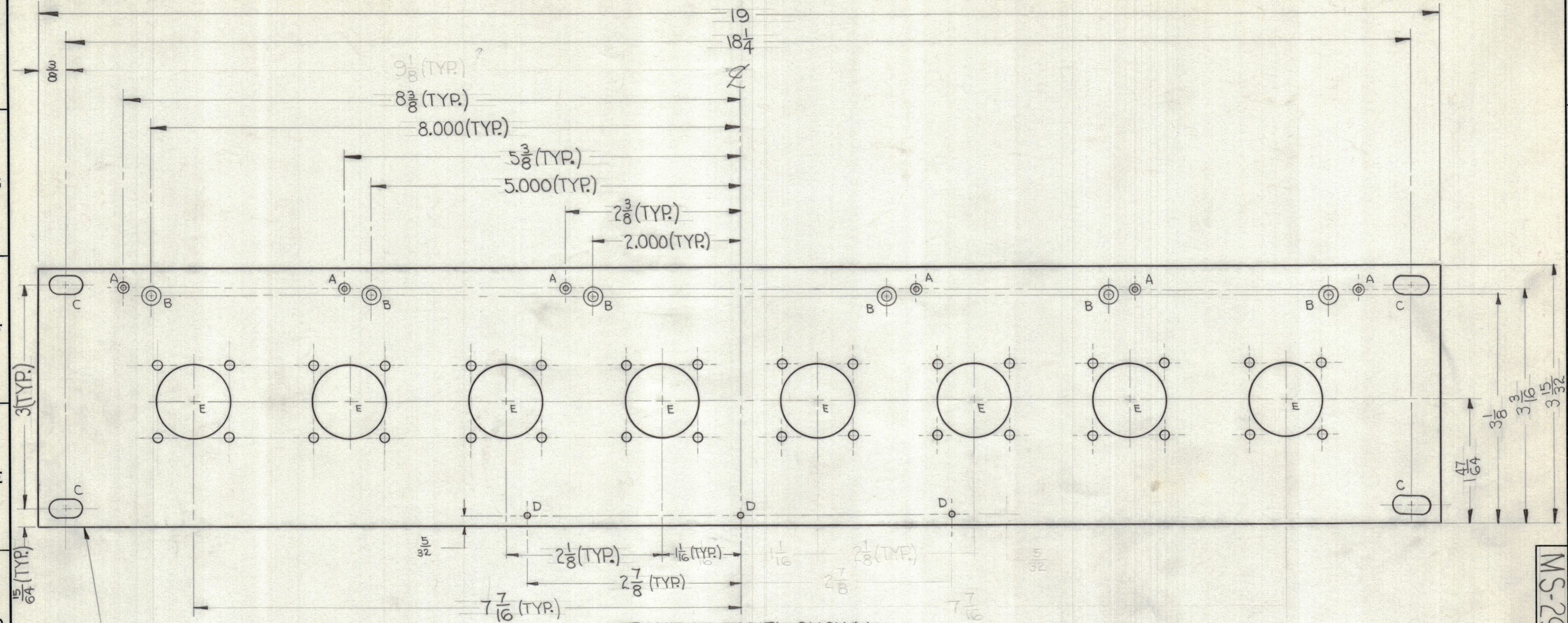


REVISIONS					
ZONE	SYM	DESCRIPTION	DATE	E.M.N. NO.	APPD

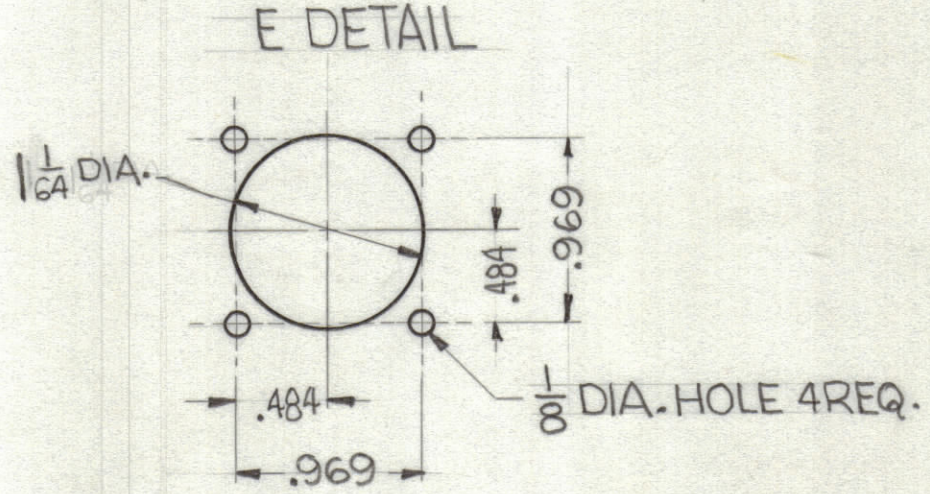


METAL STAMP TMC PART NO. $\frac{1}{8}$ HIGH BLACK GOTHIC ON REAR OF PANEL.

FRONT OF PANEL SHOWN

FINISHING NOTES:
 S404 IRIDITE
 S114 ZINC CHROMATE PRIMER
 S115 TMC SMOOTH GREY ENAMEL OR PRIME & PAINT TO CUST. SPEC. FRONT & EDGES ONLY

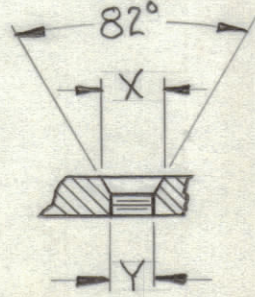
MACHINING NOTES:
 1- LATERAL BOW OF PANEL MUST BE KEPT .031 TOL.
 2- MILL ALL EDGES.
 3- HOLES MUST BE DRILLED.
 4- HOLES MUST BE FREE OF ALL MACHINING MARK, GOUGES & SCRATCHES. IF NECESSARY SAND FRONT OF PANEL WITH NO. 120 GRIT SANDPAPER.



HOLE	DESCRIPTION	REQ.
A	SEE DETAIL C'SINK	6
B	SEE DETAIL C'SINK	6
C	29/64 x 1/4 SLOT	4
D	.0785 DIA.	3
E	SEE DETAIL	4

C'SINK DETAIL

HOLE	TYPE	X	Y
A	3-48	.204	DRILL & TAP 3-48
B	6-32	.284	.144



1	JPP-11B5X8	ASS'Y. NO.
Q'TY./UNIT	MODEL USED ON	
SCALE	CODE	
DO NOT SCALE		
THE CONTENTS OF THIS DRAWING ARE THE EXCLUSIVE PROPERTY OF THE TECHNICAL MATERIEL CORP. ITS UNAUTHORIZED USE OR REPRODUCTION IN WHOLE OR IN PART IS STRICTLY FORBIDDEN.		

REQ'D.	ITEM	PART NUMBER	DESCRIPTION	SYMBOL
PRITCHARD LIST OF MATERIAL				
MATERIAL		3/16 ALUMINUM 2024 T3		
FINISH		SEE FINISHING NOTES		
UNLESS OTHERWISE SPECIFIED DIMENSIONS ARE IN INCHES AND INCLUDE CHEMICALLY APPLIED OR PLATED FINISHES		THE TECHNICAL MATERIEL CORP. MAMARONECK, NEW YORK		
DRAWN R. Truchin		TITLE JPP PANEL, FRONT MACHINING		
CHECKED H. De		DATE 5-26-62		
ELECT. DES.		DATE 5/31/62		
MECH. DES. ahk		DATE 5/24/62		
TOLERANCES		FRACTIONS ± 1/64 ANGLES ± 0° 30'		
DECIMALS .X ± .05 .XX ± .01 .XXX ± .005		FINAL APPROVAL MS-2990		
		SHEET		
		REV. LTR.		

NOTES

MS-2990