

STANDARD DRAWING

TMC PART NO.	A	B	C	D-DIA.	E	F-DIA	BEND DETAIL
MS-2983-1	1.000	.156	.156	.093	.218	.093	A-A
MS-2983-2	1.000	.156	.156	.093	.218	.093	B-B
MS-2983-3	1.000	.156	.218	.093	.269	.144	A-A
MS-2983-4	1.000	.156	.218	.093	.269	.144	B-B
MS-2983-5	.625	.156	.156	.093	.218	.093	B-B
MS-2983-6	.625	.156	.218	.093	.269	.144	B-B

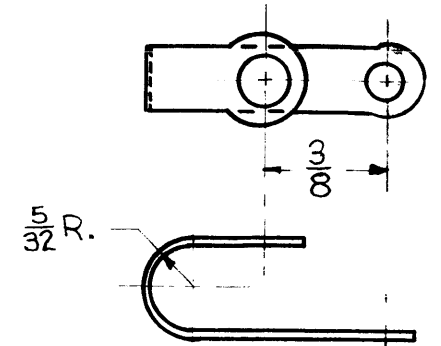
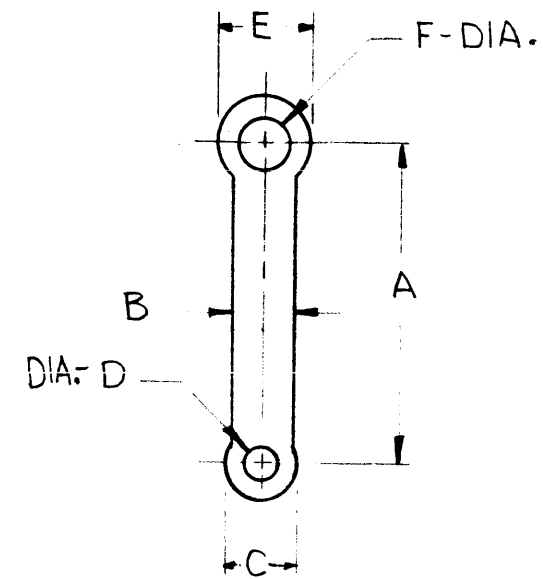
MS-2983 A

REVISIONS						
SYM	DESCRIPTION	DATE	E.M.N. NO.	DRAFT	CHKD	APPD
A	FINISH ADDED, TINNING NOTE DELETED, MS-2983-5, -6 ADDED	4-10-63	8786	RE	JUB	[Signature]

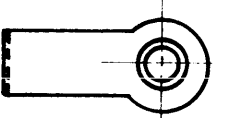
NOTICE TO READER REGARDING THIS DRAWING

THE TECHNICAL MATERIEL CORPORATION claims proprietary rights in the design disclosed herein. This drawing is based on information for engineering information only and may not be reproduced or used to manufacture any component without the permission from THE TECHNICAL MATERIEL CORPORATION. T.O.I. to the user of this drawing is hereby terminated assistance and help is not provided at any time.

THE TECHNICAL MATERIEL CORPORATION
7742 MADISON AVE. NEW YORK



DETAIL A-A



DETAIL B-B

QTY	UNIT	MODEL USED ON	ASS'Y. NO.	
2		MS-2983-4	SW-318	A-2520
1		MS-2983-3	SW-317	A-2519
2		MS-2983-4	SW-312	A-2463
2		MS-2983-2	SW-311	A-2462
2		MS-2983-4	SW-310	A-2461
2		MS-2983-4	SW-309	A-2460
1		MS-2983-3	SW-308	A-2459
1		MS-2983-3	SW-307	A-2458
1		MS-2983-3	SW-306	A-2457
1		MS-2983-1	SW-305	A-2456

NOTE:
HEAT TREAT; 2 HOURS AT 600°F
AIR COOL

NOTES

THE CONTENTS OF THIS DRAWING ARE THE EXCLUSIVE PROPERTY OF THE TECHNICAL MATERIEL CORP. ITS UNAUTHORIZED USE OR REPRODUCTION IN WHOLE OR IN PART IS STRICTLY FORBIDDEN.

REQ'D.	ITEM	PART NUMBER	DESCRIPTION	SYMBOL
PRITCHARD LIST OF MATERIAL				
MATERIAL			THE TECHNICAL MATERIEL CORP.	
BERYLLIUM COPPER .0063			MAMARONECK, NEW YORK	
FINISH			TITLE	
S105 CADMIUM PLATE			STRAP FLEXIBLE CONNECTOR	
UNLESS OTHERWISE SPECIFIED DIMENSIONS ARE IN INCHES AND INCLUDE CHEMICALLY APPLIED OR PLATED FINISHES		DRAWN	DATE	FINAL APPROVAL
		R. Juchin	5-19-62	[Signature]
		CHECKED	DATE	DATE
		[Signature]	6-9-62	6-11-62
		ELECT. DES.	DATE	
		[Signature]		
		MECH. DES.	DATE	
		[Signature]	8/11/62	
DECIMALS				
.X ± .05				
.XX ± .01				
.XXX ± .005				
FRACTIONS				
± 1/64				
ANGLES				
± 0° 30'				
TOLERANCES				
SHEET				REV. LTR.
MS-2983				A