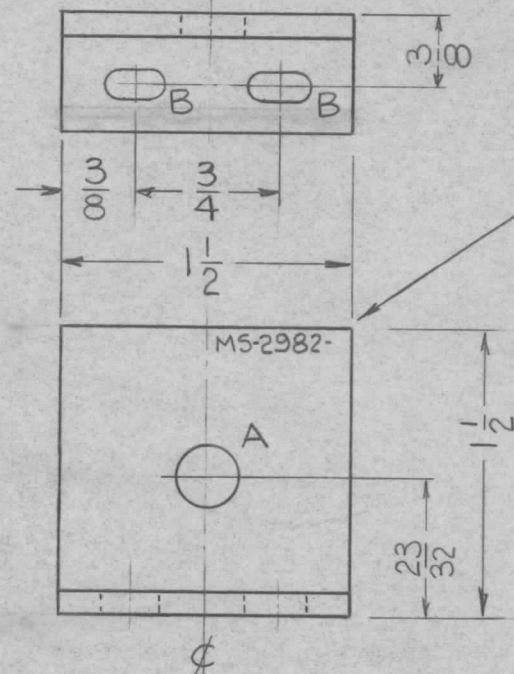


THE CONTENTS OF THIS DRAWING ARE THE EXCLUSIVE PROPERTY OF THE TECHNICAL MATERIEL CORP. ITS UNAUTHORIZED USE OR REPRODUCTION IN WHOLE OR IN PART IS STRICTLY FORBIDDEN.

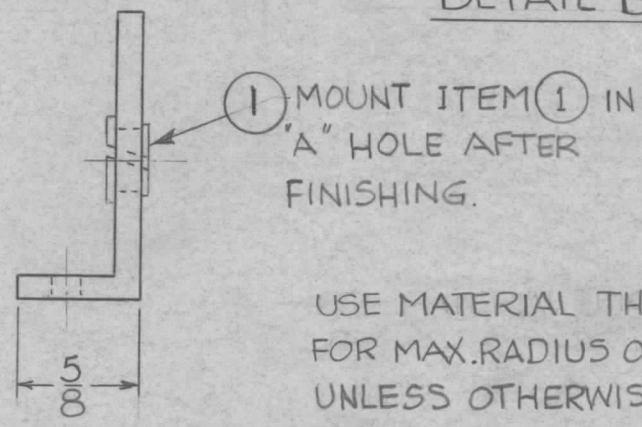
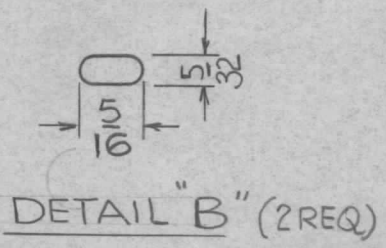
REQ. PER UNIT	USED ON		
	MODEL	ASS'Y. NO.	DATE
1	AFC-3	2503	7-26-62
1	AFC-2A	2503	7-26-62

MS-2982

HOLE	DESCRIPTION	REQ.
A	5/16 DIA.	1
B	SEE DETAIL	2



METAL STAMP  
TMC PART NO.  
1/8 HIGH BLACK GOTHIC.



USE MATERIAL THICKNESS FOR FOR MAX. RADIUS ON ALL BENDS UNLESS OTHERWISE SPECIFIED

UNLESS OTHERWISE SPECIFIED DIMENSIONS ARE IN INCHES AND INCLUDE CHEMICALLY APPLIED OR PLATED FINISHES	
DECIMALS	FRACTIONS
.X ± .05	± 1/64
.XX ± .01	ANGLES
.XXX ± .005	± 0° 30'

CUT HERE GUARANTEED 2-66

1	1	BB-117-6	BEARING, NYLON, PANEL	
REQ.	ITEM	PART NO.	WESCHLER DESCRIPTION	SYMBOL
		1/8	THE TECHNICAL MATERIEL CORP.	
		STOCK SIZE	MAMARONECK, NEW YORK	
		ALUMINUM	BRACKET, SHAFT SUPPORT	
		MATERIAL		
		5052-H32	V.R.R.	BP
		TYPE & TEMPER	HEAT TREAT. SPEC.	DRAWN
		YEL. IRIDITE S404		CHECKED
		FINISH & SPEC. NO.	ELEC. DES. APP.	MECH. DES. APP.
				MS-2982

UNLESS OTHERWISE SPECIFIED:  
DIMENSIONS ARE IN INCHES  
TOLERANCES ON  
FRAC. ± 1/64 DEC. ± .005 ANGLES ± 1/2°

SCALE:  
MAXIMUM ALLOWABLE TOLERANCES HAVE BEEN DETERMINED AND ANY DEVIATIONS WILL BE CAUSE FOR REJECTION. REMOVE ALL BURRS AND SHARP EDGES