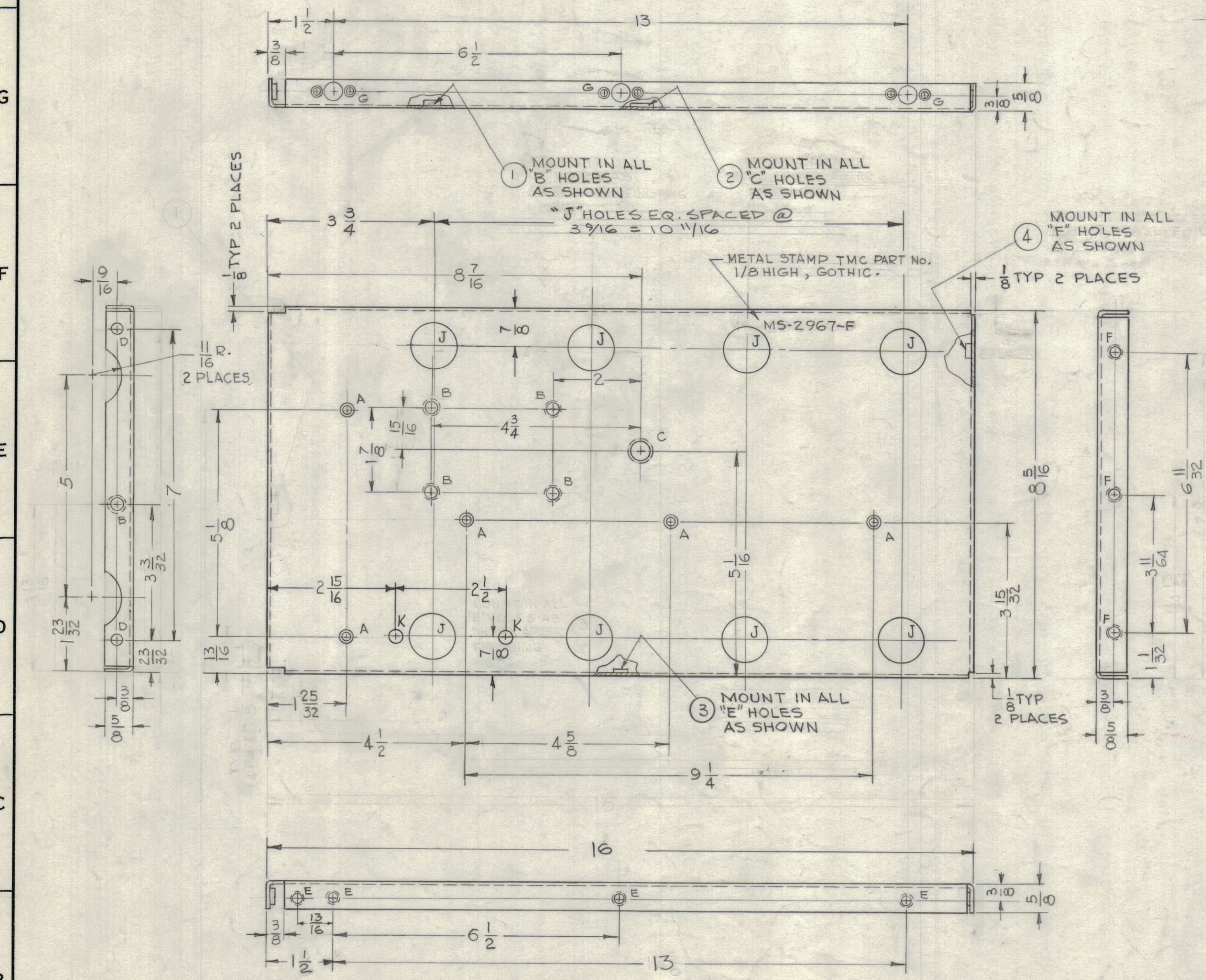
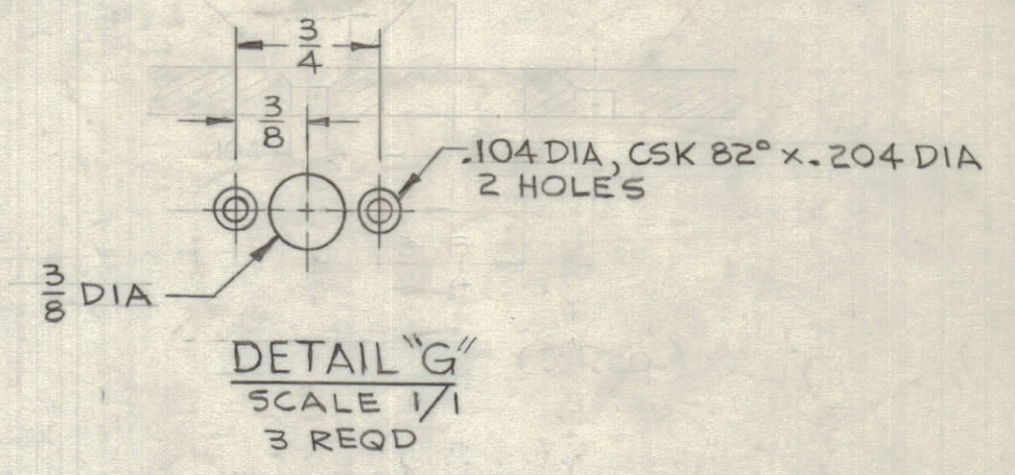


REVISIONS							
ZONE	SYM	DESCRIPTION	DATE	E.M.N. NO.	DRAFT	CHKD	APPD.
	C	REVISED & REDRAWN	7-3-63	8475	G.D.L.		
	D	UPDATED W/EXTENSIVE CHGS. SEE EMN 10787	1/23/63	10787			
B5,6	E	DIM. 1 1/2 WAS 1 3/16, 1 3/16 WAS 1 1/8, 6 1/2 WAS 6 1/8, 13 WAS 12 5/8	5-12-64	11395	LSB		
	F	ADDED "2 K HOLES" 2, DRAWING UPDATED	6-20-67	18289	L.A.K.		



HOLE	DESCRIPTION	REQ'D
A	.169 DIA., CSK 82° x .337 DIA.	5
B	.253 - .250 DIA.	5
C	.416 - .413 DIA.	1
D	7/32 DIA.	2
E	.194 - .191 DIA.	4
F	.224 - .221 DIA.	3
G	SEE DETAIL "G"	3
J	1 - DIA.	8
K	9/64 DIA.	2



- NOTES:
- UNLESS OTHERWISE SPECIFIED:
1. USE MATERIAL THICKNESS FOR MAXIMUM RADIUS ON ALL BENDS.
 2. ALL ANGULAR BENDS 90°.
 3. REMOVE ALL BURRS AND SHARP EDGES.
 4. MOUNT INSERTS AFTER FINISHING.

REQ'D.	ITEM	PART NUMBER	DESCRIPTION	SYMBOL
3	4	NT-129-832-4	NUT, ROUND, SWAGE TYPE	F
4	3	NT-129-632-4		E
1	2	NT-129-524-4		C
5	1	NT-129-1032-4	NUT, ROUND, SWAGE TYPE	B

STRUMER		LIST OF MATERIAL	
MATERIAL .081THK ALUMINUM 5052-H32		THE TECHNICAL MATERIEL CORP. MAMARONECK, NEW YORK	
FINISH S-404 YEL IRIDITE		TITLE PLATE, RIGHT SIDE	
UNLESS OTHERWISE SPECIFIED DIMENSIONS ARE IN INCHES AND INCLUDE CHEMICALLY APPLIED OR PLATED FINISHES		DRAWN G.D.L.	DATE 6-15-63
DECIMALS .X ± .05 .XX ± .01 .XXX ± .005		CHECKED JAB	DATE 7-8-63
FRACTIONS ± 1/64 ANGLES ± 0° 30'		ELECT. DES. M.P.	DATE 5/13/64
TOLERANCES		FINAL APPROVAL MS-2967 F	
		SHEET	
		REV. LTR.	

Q'TY./UNIT	MODEL USED ON	ASS'Y. NO.
SCALE 1/2	CODE A	

THE CONTENTS OF THIS DRAWING ARE THE EXCLUSIVE PROPERTY OF THE TECHNICAL MATERIEL CORP. ITS UNAUTHORIZED USE OR REPRODUCTION IN WHOLE OR IN PART IS STRICTLY FORBIDDEN.

MS-2967 F