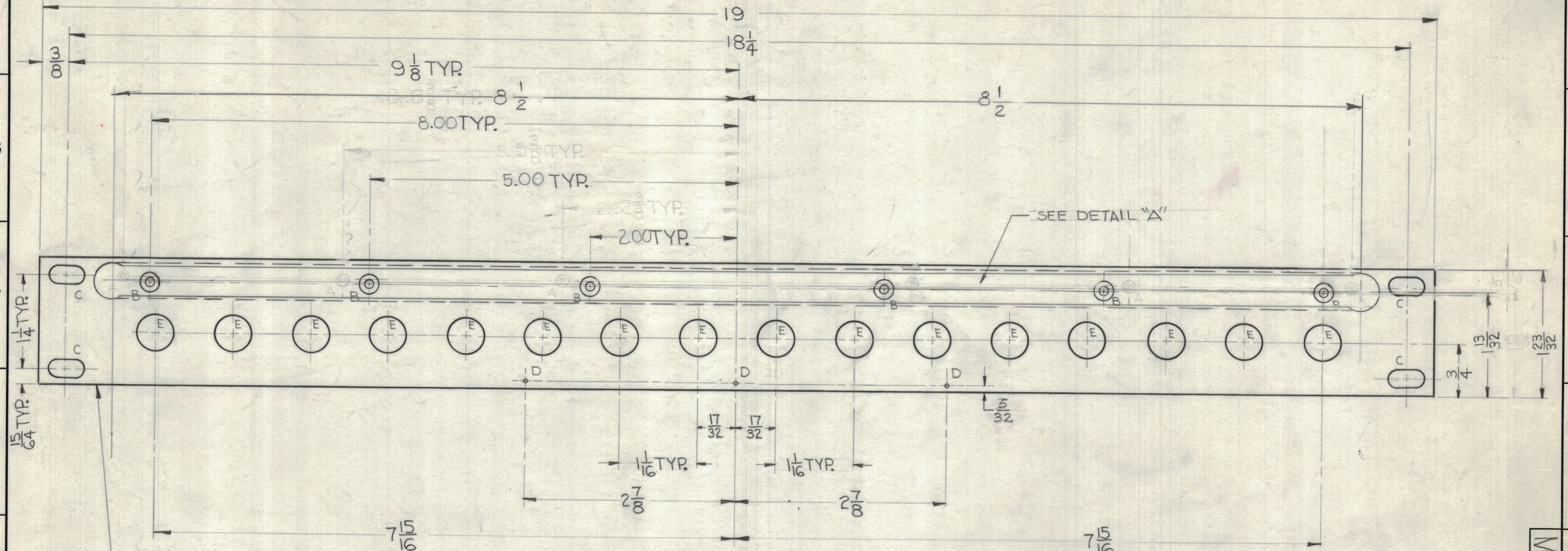


REVISIONS							
ZONE	SYM	DESCRIPTION	DATE	E.M.N. NO.	DRAFT	CHKD	APPD
	A	DIM & HOLE CHART CLARIFIED, ADD W/LAT. REV. TO TMC PT. NO.	10.4.66	16968	WHD		
	B	6 A HOLES DELETED DETAIL A ADDED	3.15.67	22105	EDL		



METAL STAMP TMC PART NO. 1/8 HIGH BLACK GOTHIC ON REAR OF PANEL, W/LATEST REVISION LETTER.

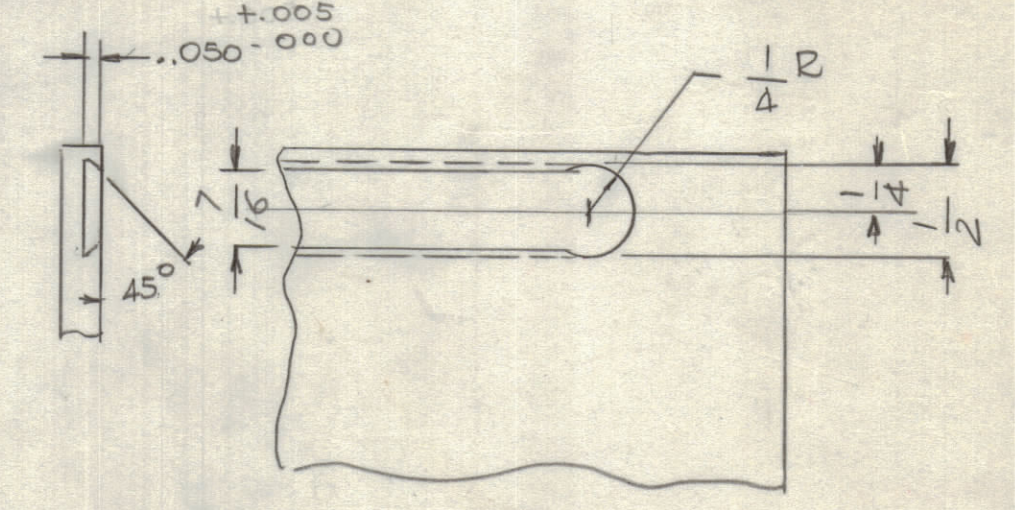
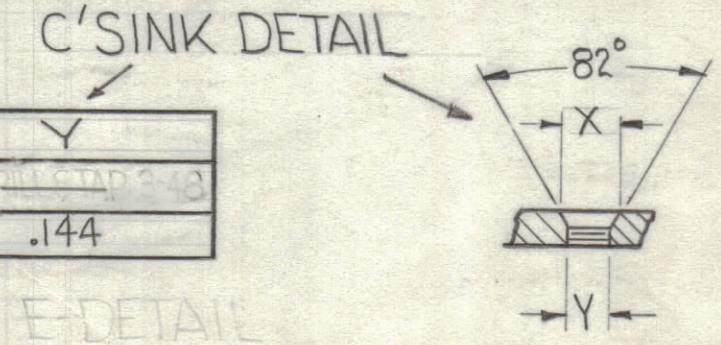
FRONT OF PANEL SHOWN

HOLE	DESCRIPTION	REQ.
A	SEE DETAIL C SINK	6
B	SEE DETAIL C SINK	6
C	29/64 x 1/4 SLOT	4
D	.070 DIA.	3
E	.515 DIA.	16

FINISHING NOTES:  
 S404 IRIDITE  
 S114 ZINC CHROMATE PRIMER  
 S115 TMC SMOOTH GREY ENAMEL  
 OR PRIME & PAINT TO CUST. SPEC

FRONT & EDGES ONLY

HOLE	TYPE	X	Y
A	2-49	2.24	.144
B	G-32	2.24	.144



MACHINING NOTES:  
 1- LATERAL BOW OF PANEL MUST BE KEPT .031 TOL.  
 2- MILL ALL EDGES.  
 3- HOLES MUST BE FREE OF ALL MACHINING MARKS, GOUGES & SCRATCHES. IF NECESSARY, SAND FRONT OF PANEL WITH NO.120 GRIT SANDPAPER.

NOTES

1	QDP-4A3X16	
Q'TY./UNIT	MODEL USED ON	ASS'Y. NO.
SCALE	CODE	
DO NOT SCALE		

THE CONTENTS OF THIS DRAWING ARE THE EXCLUSIVE PROPERTY OF THE TECHNICAL MATERIEL CORP. ITS UNAUTHORIZED USE OR REPRODUCTION IN WHOLE OR IN PART IS STRICTLY FORBIDDEN.

REQ'D.	ITEM	PART NUMBER	DESCRIPTION	SYMBOL
PRITCHARD				
LIST OF MATERIAL				
MATERIAL		THE TECHNICAL MATERIEL CORP.		
3/16 ALUMINUM		MAMARONECK, NEW YORK		
2024 T3		PANEL, FRONT MACHINING		
FINISH		TITLE		
SEE FINISHING NOTES		PANEL, FRONT MACHINING		
UNLESS OTHERWISE SPECIFIED DIMENSIONS ARE IN INCHES AND INCLUDE CHEMICALLY APPLIED OR PLATED FINISHES		DRAWN	DATE	FINAL APPROVAL
		R. Lurchin	5-7-62	
		FILE	5-9-62	
DECIMALS		ELECT. DES.		DATE
.X ± .05		MECH. DES.		DATE
.XX ± .01		DATE		1/7/62
.XXX ± .005		SHEET		MS-2965
TOLERANCES		FRACTIONS		B
± 1/64		± 0° 30'		REV. LTR.

MS-2965 B