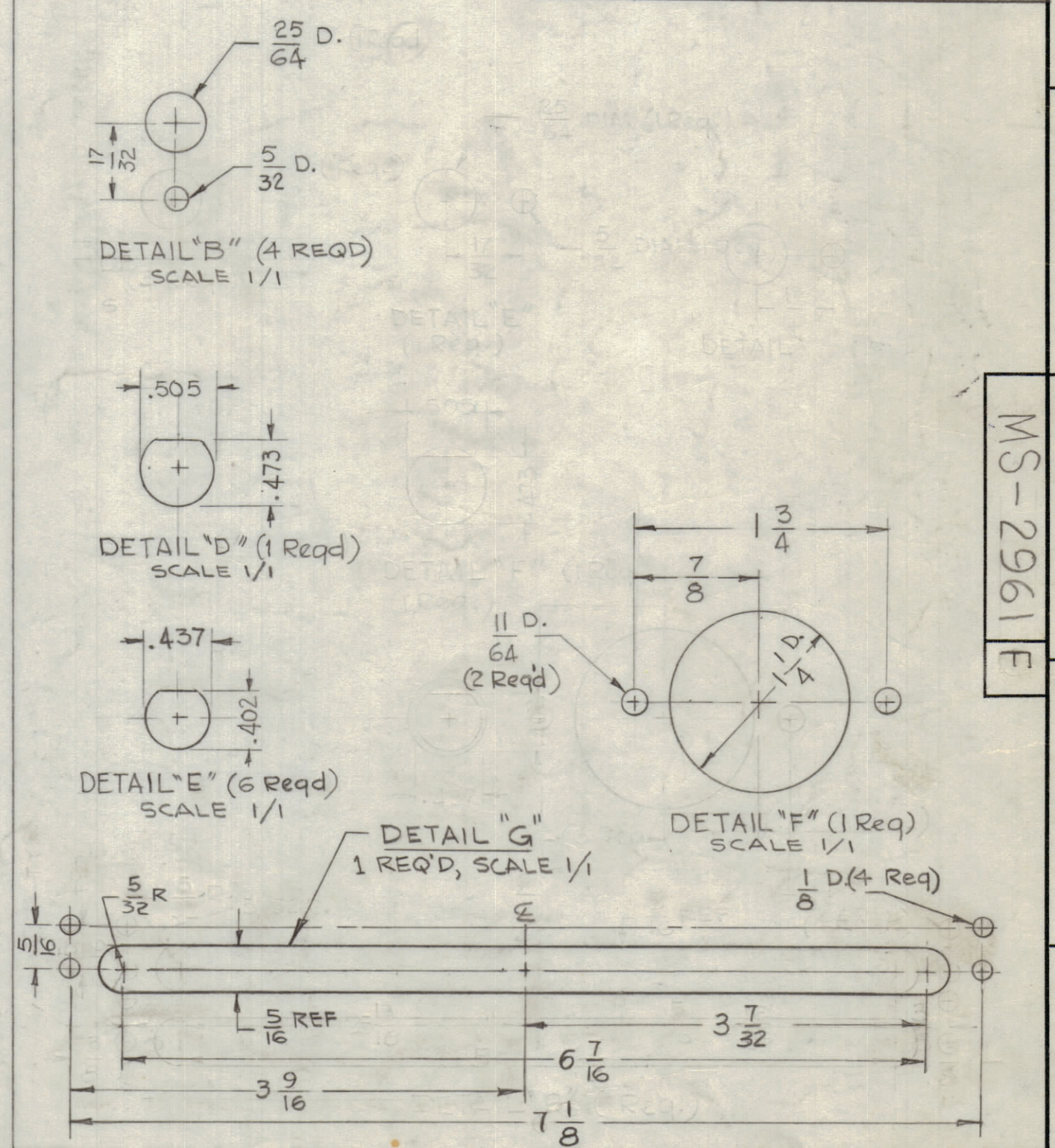
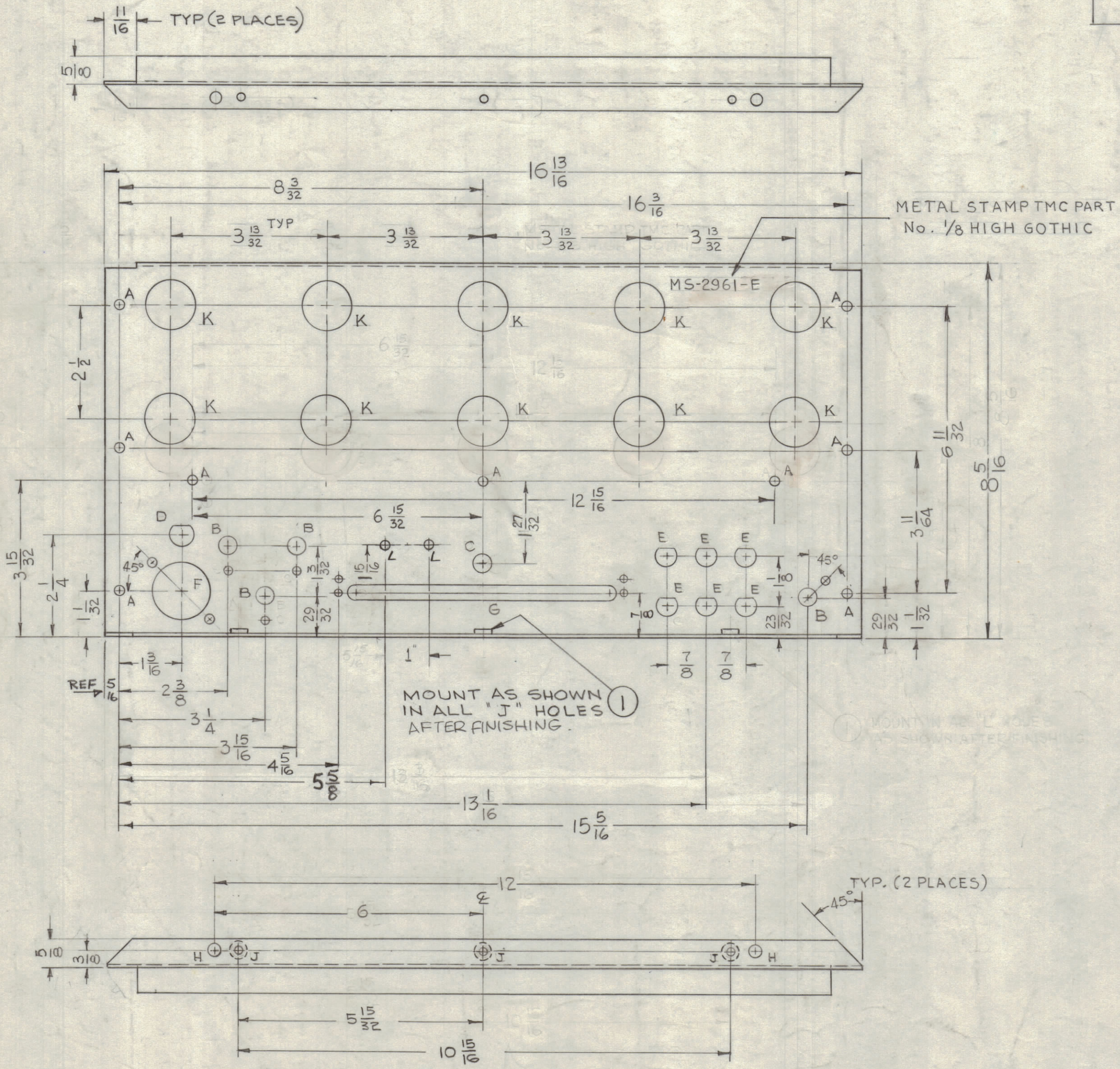


REVISIONS						
ZONE	SYM	DESCRIPTION	DATE	E.M.N. NO.	DRAFT	CHKD
-	B	REVISED & REDRAWN	7-3-63	9476	G.D.L.	
-	C	3" J HOLES WERE 1/64 DIA, ITEM 1 ADDED	9-10-63	9904	J.P.S.	
-	D	UPDATED W/CHGS. SEE EMN. 10798	1/23/64	10798	G.D.L.	
-	E	10" K HOLES ADDED	2-24-64	10937	J.P.S.	
-	F	2" L HOLES 1/64 DIA. ADDED	1/11/66	15550	H.V.	

HOLE	DESCRIPTION	REQ'D
A	3/16 DIA.	9
B	SEE DETAIL "B"	4
C	3/8 DIA.	1
D	SEE DETAIL "D"	1
E	SEE DETAIL "E"	6
F	SEE DETAIL "F"	1
G	SEE DETAIL "G"	1
H	1/4 DIA.	2
J	.191-.194 DIA	3
K	1 1/8 DIA.	10
L	1/64 DIA.	2



NOTES:  
 1. USE MATERIAL THICKNESS FOR MAX. RADIUS ON ALL BENDS.  
 2. ALL BENDS 90°.

GPR-92		ASS'Y. NO.
QTY./UNIT	MODEL USED ON	
SCALE 1:2	CODE A	

3	1	NT-129-632-4	NUT, ROUND, SWAGE TYPE	J
REQ'D.	ITEM	PART NUMBER	DESCRIPTION	SYMBOL
GELLMAN LIST OF MATERIAL				
MATERIAL .081 THK. ALUMINUM 5052-H32			THE TECHNICAL MATERIEL CORP. MAMARONECK, NEW YORK	
FINISH S-404 YEL IRIDITE			TITLE PLATE, REAR	
UNLESS OTHERWISE SPECIFIED DIMENSIONS ARE IN INCHES AND INCLUDE CHEMICALLY APPLIED OR PLATED FINISHES		DRAWN G.D.L.	DATE 6-14-63	FINAL APPROVAL
DECIMALS .X ± .05		CHECKED	DATE 8-5-64	
FRACTIONS XX ± .01		ELECT. DES.	DATE	
ANGLES .XXX ± .005		MECH. DES.	DATE	
TOLERANCES ± 1/64 ANGLES ± 0° 30'			MS-2961 F	
SHEET				REV. LTR.

MS-2961 F

REF: LD-1092-D