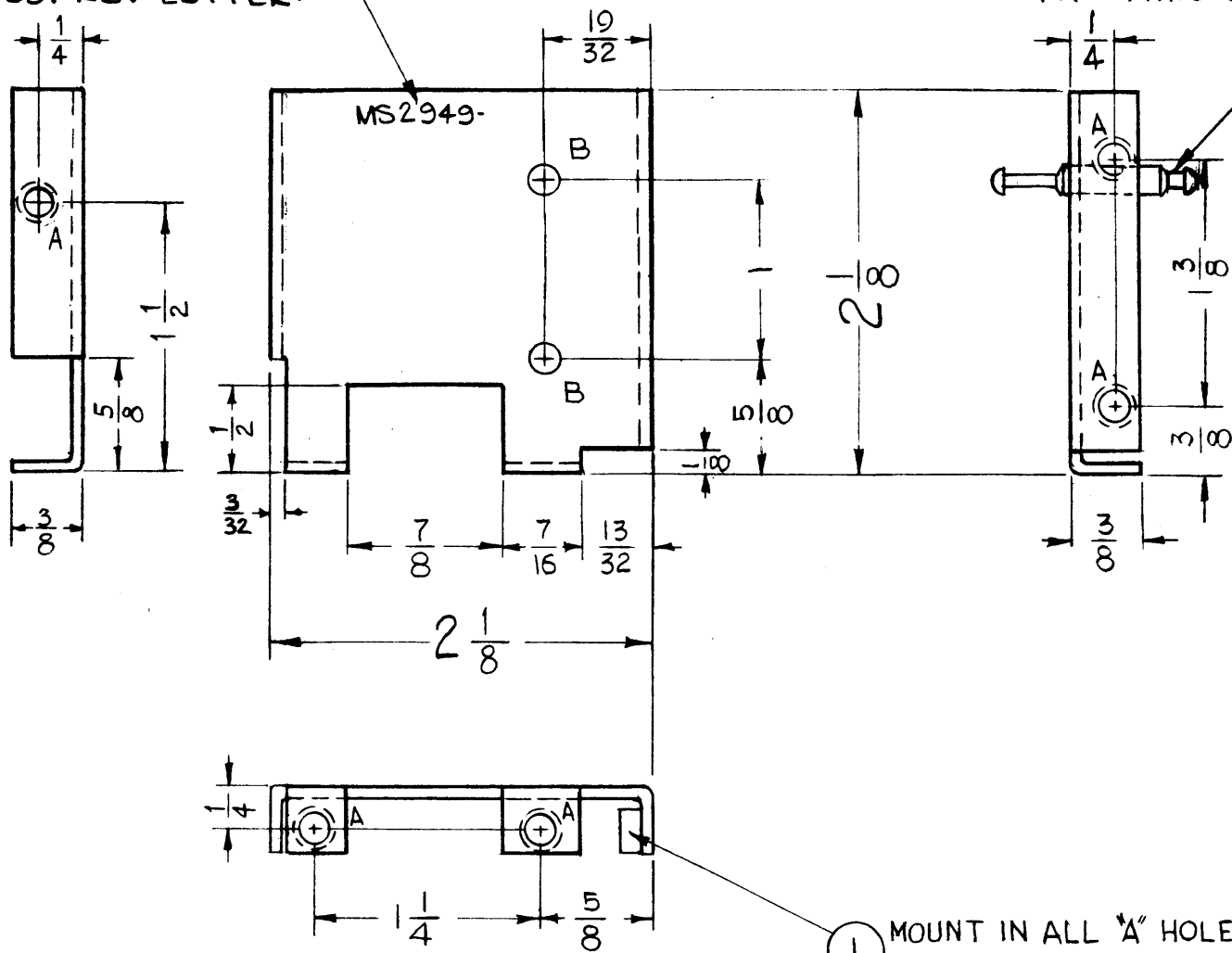


MS 2949

THE CONTENTS OF THIS DRAWING ARE THE EXCLUSIVE PROPERTY OF THE TECHNICAL MATERIEL CORP. ITS UNAUTHORIZED USE OR REPRODUCTION IN WHOLE OR IN PART IS STRICTLY FORBIDDEN.

METAL STAMP TMC PART No. 1/8 HIGH GOTHIC AS SHOWN, W/LATEST REV. LETTER.

MOUNT IN ALL "B" HOLES AS SHOWN AFTER FINISHING FROM THIS SIDE (2)



LEGEND		
HOLE	DESCRIPTION	REQ.
A	.161 - .164 DIA.	5
B	.158 DIA.	2

USE MATERIAL THICKNESS FOR MAX. RADIUS ON ALL BENDS UNLESS OTHERWISE SPECIFIED

(1) MOUNT IN ALL "A" HOLES AS SHOWN AFTER FINISHING

2	2	TE-169-1	FEED THRU, TEFLON	B
5	1	NT-129-440-3	NUT, ROUND, SWAGE TYPE	A
REQ.	ITEM	PART NO.	STRUTTER DESCRIPTION	SYMBOL
.051			THE TECHNICAL MATERIEL CORP.	
STOCK SIZE			MAMARONECK, NEW YORK	
ALUMINUM			SHIELD, RF #4	
MATERIAL			3500 DECK	
5052 H-32			G.D.L.	BP
TYPE & TEMPER			DRAWN	
5404 YEL. IRIDITE			MS 2949	B
FINISH & SPEC. NO.			ELC. DES. APP.	MCH. DES. APP.

B	"B" H'S WERE ILL, REV. TUC PT. NO.	11.28.66	17329	WHO	AK	AK
A	ITEM (2) ON PICTORIAL CLARIFIED	8-28-63	9854	AK	AK	AK
SYM	DESCRIPTION	DATE	CH. NO.	DRAFTS	CHECKER	ENG. APP.
UNLESS OTHERWISE SPECIFIED:		SCALE: DO NOT SCALE				
DIMENSIONS ARE IN INCHES		MAXIMUM ALLOWABLE TOLERANCES HAVE BEEN DETERMINED AND ANY DEVIATIONS WILL BE CAUSE FOR REJECTION.				
TOLERANCES ON FRACTIONS ± 1/64 DECIMALS ± .005 ANGLES ± 1/2		REMOVE ALL BURRS AND SHARP EDGES				
		2	HFS-1	3500		8-15-62
		REQ. PER UNIT	MODEL	SECTION	ASSY. NO.	DATE
		USED ON				