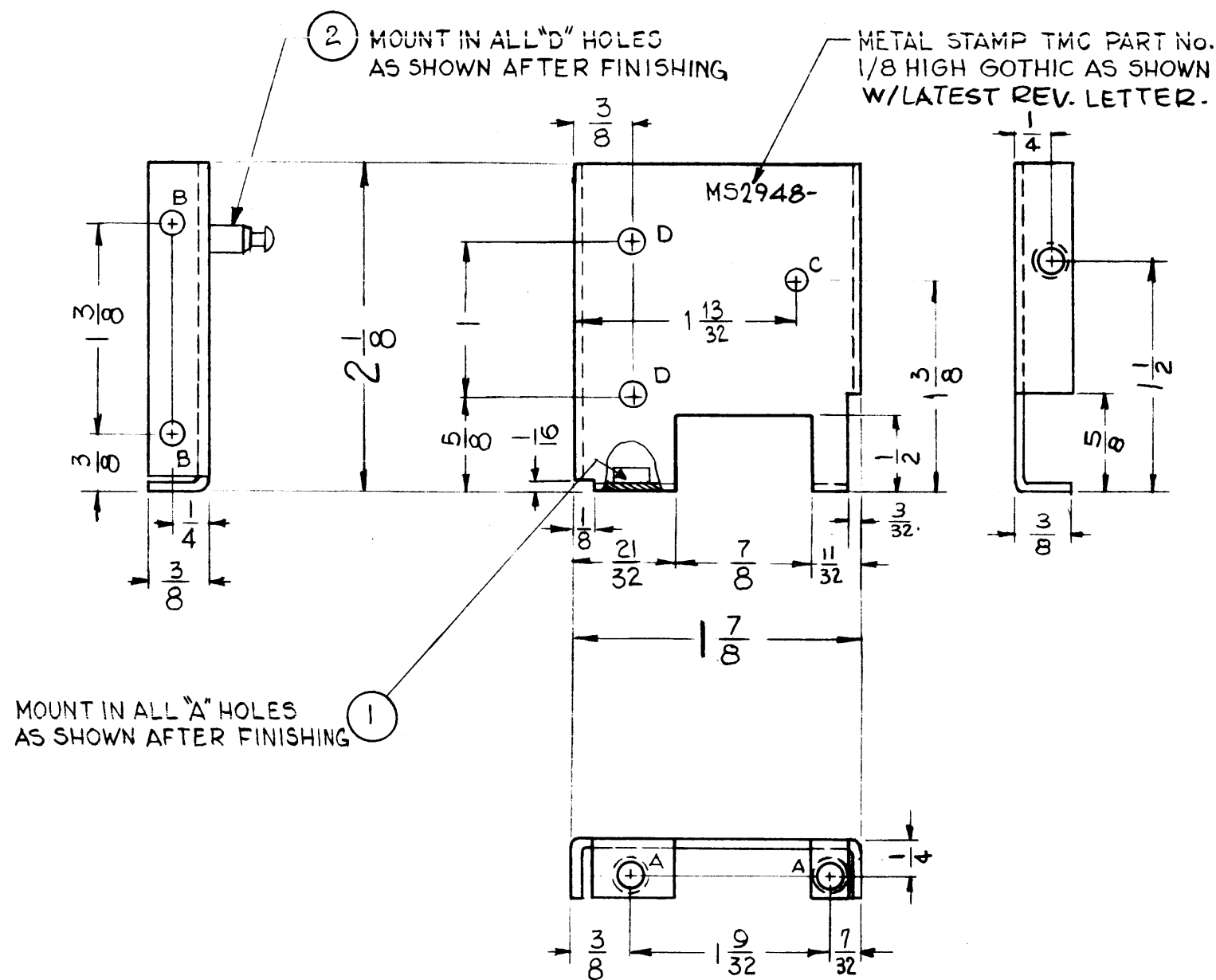


MS 2948 B

THE CONTENTS OF THIS DRAWING ARE THE EXCLUSIVE PROPERTY OF THE TECHNICAL MATERIEL CORP. ITS UNAUTHORIZED USE OR REPRODUCTION IN WHOLE OR IN PART IS STRICTLY FORBIDDEN.



LEGEND		
HOLE	DESCRIPTION	REQ.
A	.161 - .164 DIA.	3
B	9/64 DIA.	2
C	1/8 DIA.	1
D	.158 DIA.	2

USE MATERIAL THICKNESS FOR MAX. RADIUS ON ALL BENDS UNLESS OTHERWISE SPECIFIED

B	"D" HOLE WAS .166, REV. TMC PT. 10	11.28.66	17329	WHA	QCB	ST
A	DIM. 1-7/8 WAS 1-23/32 RIGHT SIDE VIEW & (1) "A" HOLE ADDED ITEM (1) WAS 2 REQ. 3/32 x 5/8 CUTOUT ADDED	10-31-62	7566	WHA	QCB	ST
SYM	DESCRIPTION	DATE	CH. NO.	DRAFTS	CHECKER	ENG. APP.
UNLESS OTHERWISE SPECIFIED: DIMENSIONS ARE IN INCHES TOLERANCES ON FRACTIONS ± 1/64 DECIMALS ± .005 ANGLES ± 1/2°		SCALE: DO NOT SCALE MAXIMUM ALLOWABLE TOLERANCES HAVE BEEN DETERMINED AND ANY DEVIATIONS WILL BE CAUSE FOR REJECTION. REMOVE ALL BURRS AND SHARP EDGES				
RE .	2	HFS-1	3500			B-15-62
PER		MODEL	SECTION	ASS'Y. NO.		DATE
UNIT		USED ON				

2	2	TE-169-1	FEED, THRU TEFLON	D
3	1	NT-129-440-3	NUT, ROUND, SWAGE TYPE	A
REQ.	ITEM	PART NO.	STRUMER DESCRIPTION	SYMBOL
		.051	THE TECHNICAL MATERIEL CORP. MAMARONECK, NEW YORK	
		ALUMINUM	SHIELD, RF # 3 3500 DECK	
		5052-H-32	G.D.L.	
		TYPE & TEMPER	HEAT TREAT. SPEC.	DRAWN
		5404 YEL. IRIDITE		CHECKED
		FINISH & SPEC. NO.	ELEC. DES. APP.	MECH. DES. APP.
				MS 2948 B