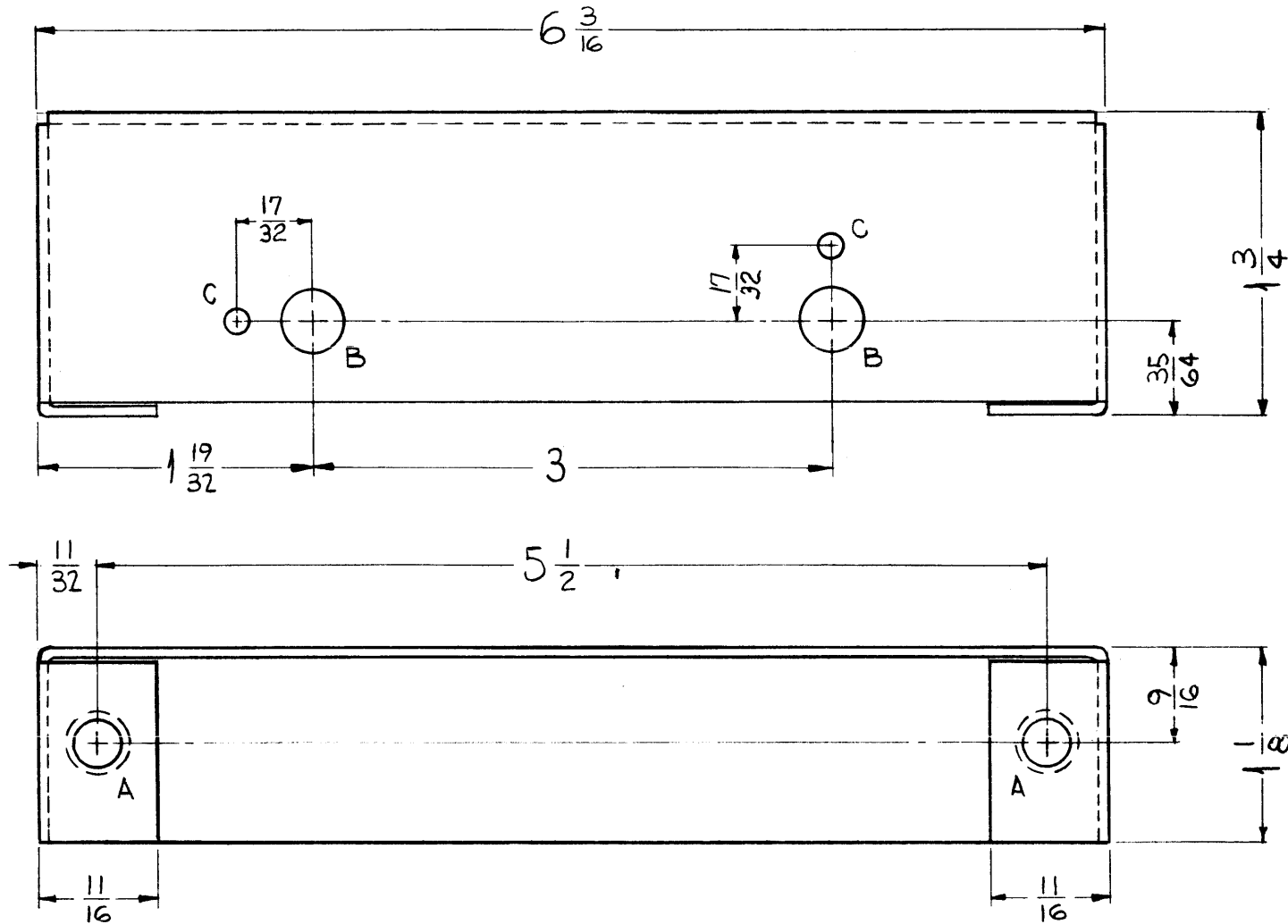
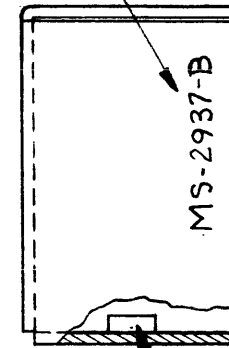


MS-2937 B

THE CONTENTS OF THIS DRAWING ARE THE EXCLUSIVE PROPERTY OF THE TECHNICAL MATERIEL CORP. ITS UNAUTHORIZED USE OR REPRODUCTION IN WHOLE OR IN PART IS STRICTLY FORBIDDEN.



Metal Stamp TMC Part No. 1/8 High, Gothic.



Mount Item (1) In All "A" Holes As Shown After Finishing.

Legend		
Hole	Description	Req.
A	.221 - .224 Dia	2
B	25/64 Dia.	2
C	9/64 Dia.	2

USE MATERIAL THICKNESS FOR MAX. RADIUS ON ALL BENDS UNLESS OTHERWISE SPECIFIED

REF: DWG. LD-1192

B	17/32 DIMS. WERE 7/16	8-5-63	9649	AK.	<i>[Signature]</i>	<i>[Signature]</i>
A	B HOLES WERE 3/8 DIA, C HOLES WERE 1/8 DIA	4-23-64	8858	<i>[Signature]</i>	<i>[Signature]</i>	<i>[Signature]</i>
SYM	DESCRIPTION	DATE	CH. NO.	DRAFTS	CHECKER	ENG. APP.
UNLESS OTHERWISE SPECIFIED:		SCALE: FULL				
DIMENSIONS ARE IN INCHES		MAXIMUM ALLOWABLE TOLERANCES HAVE BEEN DETERMINED AND ANY DEVIATIONS WILL BE CAUSE FOR REJECTION.				
TOLERANCES ON FRACTIONS ± 1/64 DECIMALS ± .05 ANGLES ± 1/2°		REMOVE ALL BURRS AND SHARP EDGES				

1	TRX-1			2-14-63
REQ. PER UNIT	MODEL	SECTION	ASS'Y. NO.	DATE
	USED ON			

2	1	NT-129-832-4	Nut, Round, Swage Type		A
REQ.	ITEM	PART NO.	DESCRIPTION		SYMBOL
		.064	THE TECHNICAL MATERIEL CORP. MAMARONECK, NEW YORK		
		Aluminum	BRACKET, SUPPORT, SWITCH		
		5052-H32	<i>[Signature]</i>	<i>[Signature]</i> 3/12/63	<i>[Signature]</i>
		S404-Yellow Iridite	<i>[Signature]</i>	<i>[Signature]</i> 3-12-63	MS-2937 B
		FINISH & SPEC. NO.	ELEC. DES. APP.	MECH. DES. APP.	