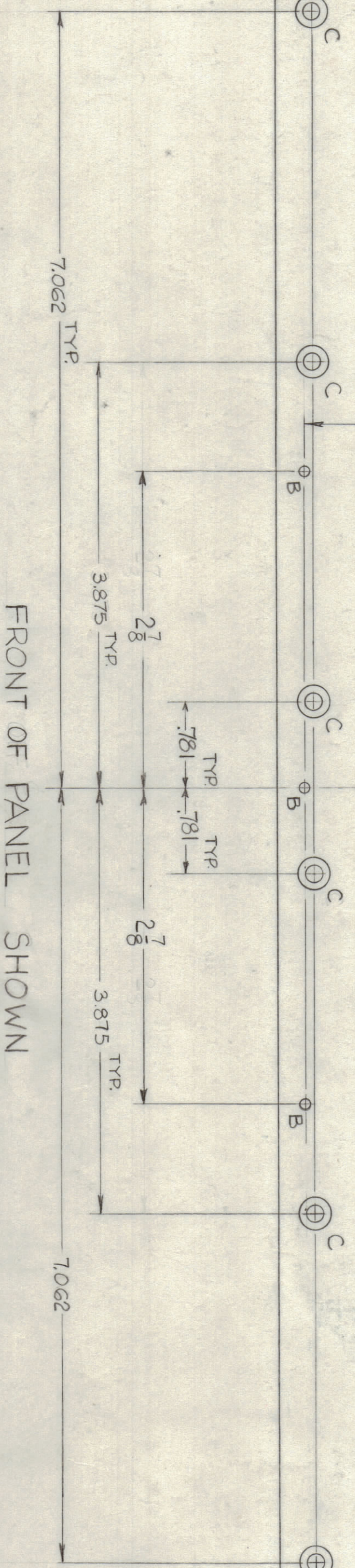
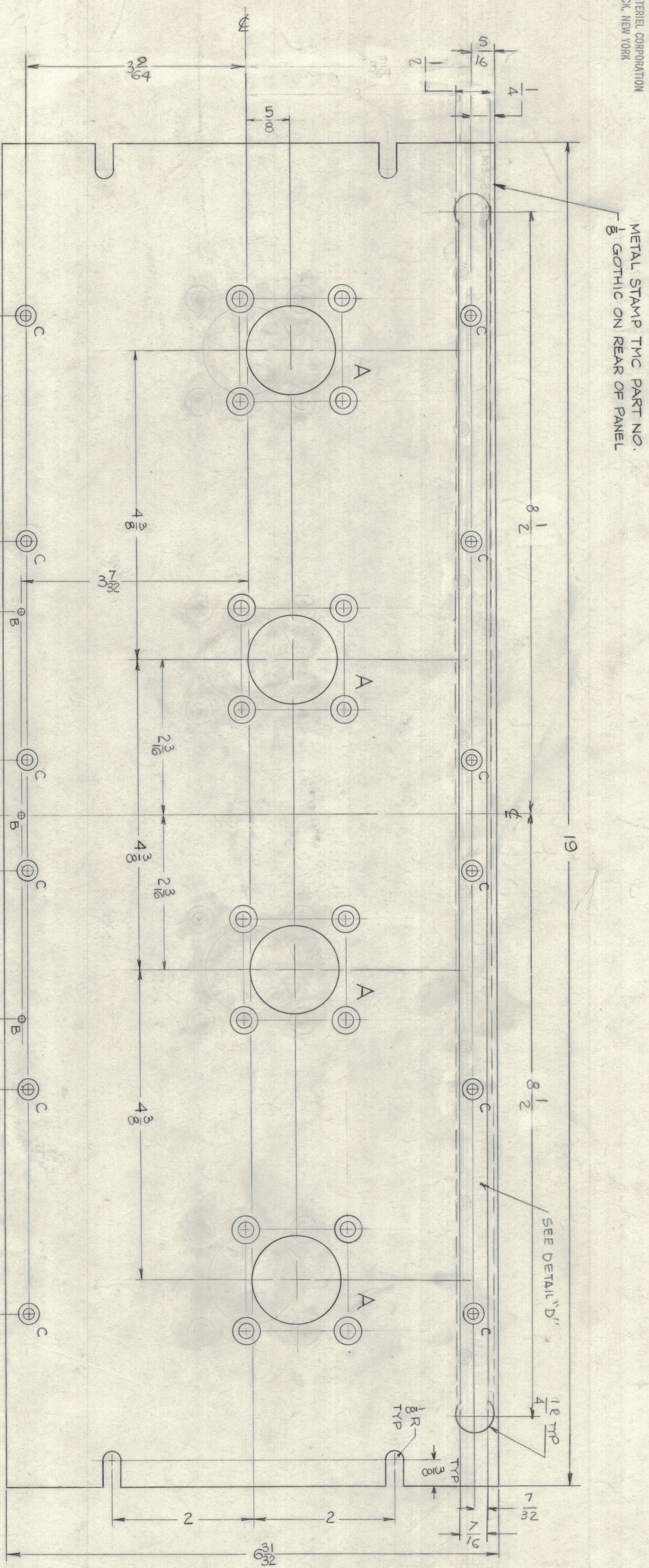


NOTICE TO PERSONS RECEIVING THIS DRAWING  
 THE TECHNICAL MATERIAL CORPORATION claims proprietary right in the material disclosed herein. This drawing is issued in confidence, for engineering information only and may not be reproduced or used to manufacture anything shown herein without permission from THE TECHNICAL MATERIAL CORPORATION to the user. This drawing is loaned for mutual assistance and is subject to recall at any time.

Prop'd by:  
 THE TECHNICAL MATERIAL CORPORATION  
 MAMARONECK, NEW YORK

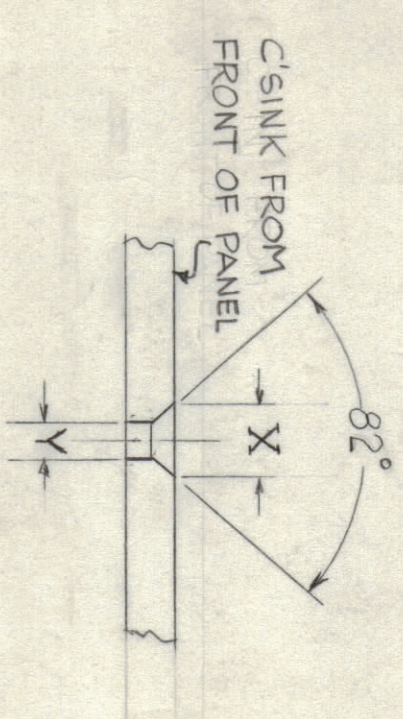
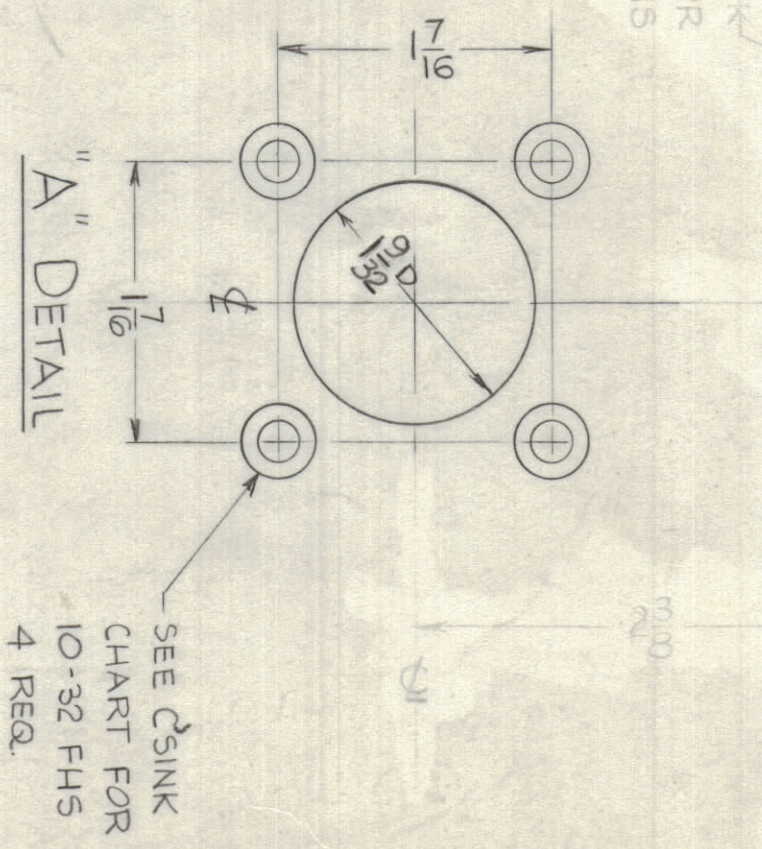


- MACHINING -
- 1- LATERAL BOW OF PANEL MUST BE KEPT TO .051 TOL.
  - 2- MILL ALL EDGES
  - 3- HOLES MUST BE DRILLED
  - 4- ALL THREADED HOLES & HOLE DIAM. MUST BE HELD AFTER ETCHING.
  - 5- PANEL MUST BE FREE OF ALL MACHINING MARKS, GOUGES & SCRATCHES, IF NECESSARY SAND FRONT, WITH NO. 120 GRIT SANDPAPER

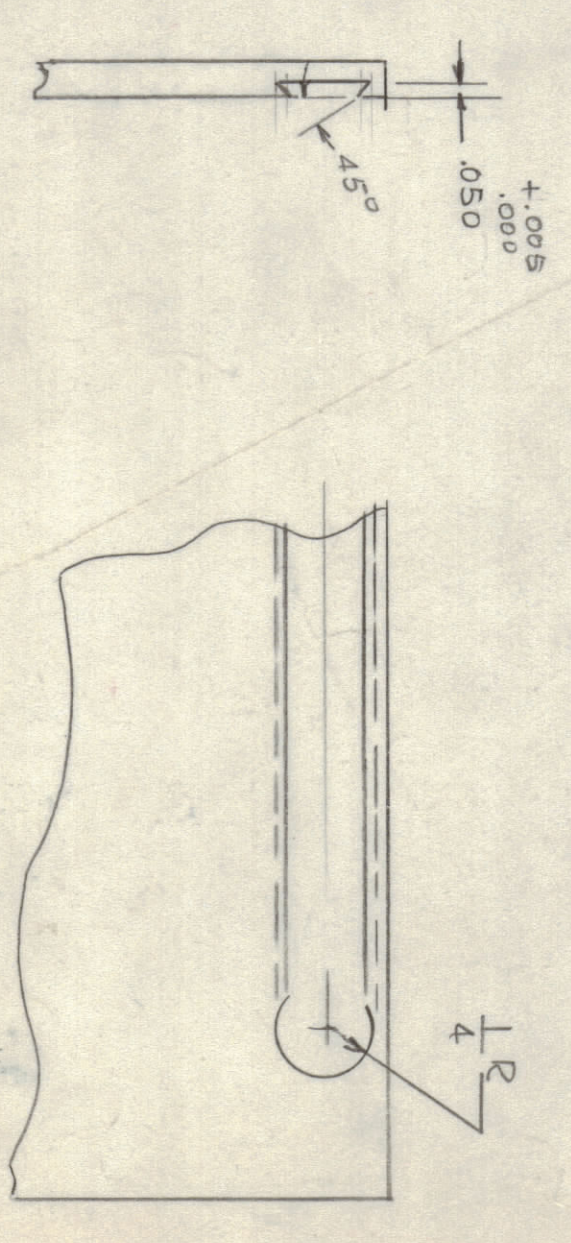
- FINISH
- 5404 - YELLOW IRIDIOTE
  - 514 - ZINC CHROMATE PRIMER
  - 5115 - TMC SMOOTH GREY ENAMEL
- OR
- PRIME & PAINT PER CUSTOMER

LEGEND

HOLE	DESCRIPTION	QUAN.
A	SEE DETAIL	4 REQD.
B	.078 DRILL	3 REQD.
C	SEE CHART	12 REQD.
D	1 3/4 DIA.	1 REQD.



HOLES	SCREW TYPE	X	Y
A" DETAIL	10-.32	.390	.196
B" DETAIL	10-.32	.284	.144
C	6-32 FHS	.284	.144



UNLESS OTHERWISE SPECIFIED DIMENSIONS ARE IN INCHES AND UNLESS OTHERWISE SPECIFIED DIMENSIONS ARE IN INCHES TOLERANCES ARE IN INCHES

STW	ZONE	DESCRIPTION	DATE	CH. NO.	DRW'G	CHECKER	ENG. APP.
A		ON DETAIL 27-27-56	5-1-62	27056			

REQ. ITEM	PART NO.	DESCRIPTION	SYMBOL
1	60P-EAS125D2M	MODEL	
1	4-3-62	DATE	

REQ. ITEM	PART NO.	DESCRIPTION	SYMBOL
1	2024-T3	HEAT TREAT SPEC.	
1	MS-2934	FINAL APPROVAL	

REQ. ITEM	PART NO.	DESCRIPTION	SYMBOL
1	3/16 THICK	ROCK SIZE	
1	ALUMINUM	MATERIAL	
1	VRB	DRAWN	
1	MS-2934	FINAL APPROVAL	