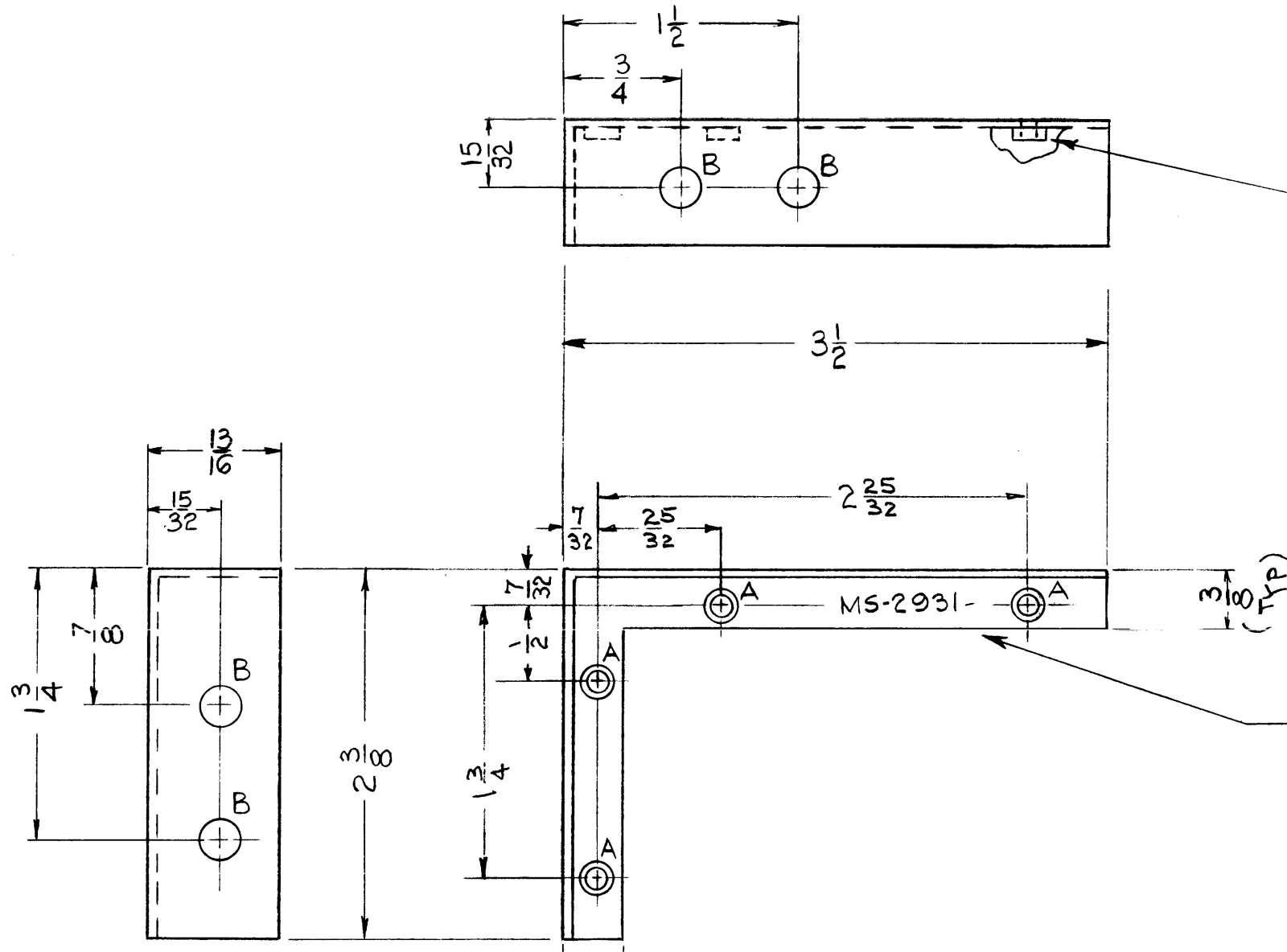


THE CONTENTS OF THIS DRAWING ARE THE EXCLUSIVE PROPERTY OF THE TECHNICAL MATERIEL CORP. ITS UNAUTHORIZED USE OR REPRODUCTION IN WHOLE OR IN PART IS STRICTLY FORBIDDEN.

MS-2931

LEGEND

HOLE	DESCRIPTION	QUAN.
A	.161-.164 DIA.	4
B	1/4 DIA.	4



MOUNT ITEM 1 IN ALL "A" HOLES AFTER FINISHING

NOTICE TO PERSONS RECEIVING THIS DRAWING

THE TECHNICAL MATERIEL CORPORATION claims proprietary right in the material disclosed hereon. This drawing is issued in confidence for engineering information only and may not be reproduced or used to manufacture anything shown hereon without permission from THE TECHNICAL MATERIEL CORPORATION to the user. This drawing is loaned for mutual assistance and is subject to recall at any time.

Property of:
THE TECHNICAL MATERIEL CORPORATION
MAMARONECK, NEW YORK

METAL STAMP TMC PART NO. MS-2931 IN 1/8 HIGH GOTHIC AS SHOWN.

USE MATERIAL THICKNESS FOR MAX. RADIUS ON ALL BENDS UNLESS OTHERWISE SPECIFIED

4	1	NT-129-440-4	NUT, ROUND SWAGE TYPE	A
REQ.	ITEM	PART NO.	WESCHLER DESCRIPTION	SYMBOL
.064			THE TECHNICAL MATERIEL CORP.	
STOCK SIZE			MAMARONECK, NEW YORK	
ALUMINUM			BRACKET ANGLE	
MATERIAL			RF SHIELD #3 (MAIN CHASSIS)	
5052-H-32			V.R.R.	BP
TYPE & TEMPER		HEAT TREAT. SPEC.	DRAWN	CHECKED
S-404 YEL IRIDITE				MS-2931
FINISH & SPEC. NO.		ELEC. DES. APP.	MECH. DES. APP.	

SYM	DESCRIPTION	DATE	CH. NO.	DRAFTS	CHECKER	ENG. APP.
UNLESS OTHERWISE SPECIFIED:		SCALE: DO NOT SCALE				
DIMENSIONS ARE IN INCHES		MAXIMUM ALLOWABLE TOLERANCES HAVE BEEN DETERMINED AND ANY DEVIATIONS WILL BE CAUSE FOR REJECTION. REMOVE ALL BURRS AND SHARP EDGES				
TOLERANCES ON FRACTIONS ± 1/64 DECIMALS ± .05 ANGLES ± 1/2°		2 AFC-2A AFC-3				
		REQ. PER UNIT	MODEL	SECTION	ASS'Y. NO.	DATE
		USED ON				