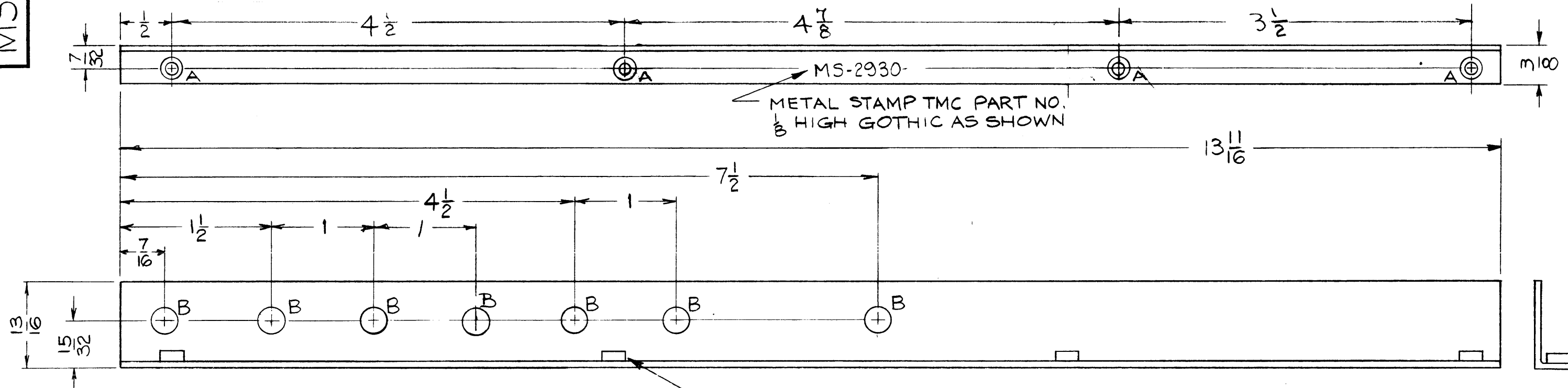


MS-2930 A



NOTICE TO PERSONS RECEIVING THIS DRAWING

THE TECHNICAL MATERIEL CORPORATION claims proprietary right in the material disclosed hereon. This drawing is issued in confidence for engineering information only and may not be reproduced or used to manufacture anything shown hereon without permission from THE TECHNICAL MATERIEL CORPORATION to the user. This is not to be construed as an assistance and is not to be used for any other purpose.

THE TECHNICAL MATERIEL CORPORATION

USE MATERIAL THICKNESS FOR MAX. RADIUS ON ALL BENDS UNLESS OTHERWISE SPECIFIED

SYM	DESCRIPTION	DATE	CH. NO.	DRAFTS	CHECKER	ENG. APP.
A	QTY. OF "B" HOLES WAS 6	11/26/62	5096	X.V.V.	J.C.H.	J.A.

UNLESS OTHERWISE SPECIFIED:
DIMENSIONS ARE IN INCHES
TOLERANCES ON FRACTIONS $\pm 1/64$ DECIMALS $\pm .005$ ANGLES $\pm 1/20^\circ$

SCALE:
MAXIMUM ALLOWABLE TOLERANCES HAVE BEEN DETERMINED AND ANY DEVIATIONS WILL BE CAUSE FOR REJECTION. REMOVE ALL BURRS AND SHARP EDGES

REQ. PER UNIT	MODEL	SECTION	ASS'Y. NO.	DATE
1	AFC-2A AFC-3			7-26-62

4	1	NT-129-440-4	NUT, ROUND, SWAGE TYPE	A
REQ. ITEM	PART NO.	WESCHLER DESCRIPTION		SYMBOL
	.064	THE TECHNICAL MATERIEL CORP. MAMARONECK, NEW YORK		
STOCK SIZE		BRACKET, ANGLE		
MATERIAL		RF SHIELD #2 (MAIN CHASSIS)		
5052-H-32		V.R.R.	J.W.	BP
TYPE & TEMPER		HEAT TREAT. SPEC.	DRAWN	CHECKER
S-404 YEL. IRIDITE				
FINISH & SPEC. NO.		ELEC. DES. APP.	MECH. DES. APP.	FINAL APPROVAL
				MS-2930 A