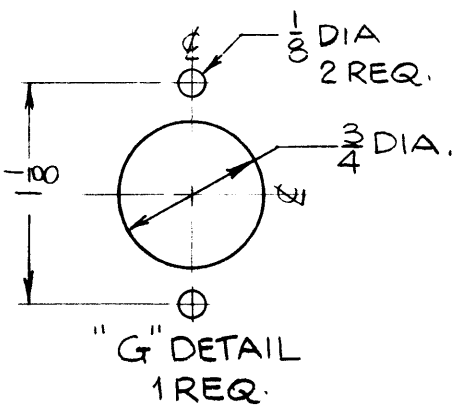
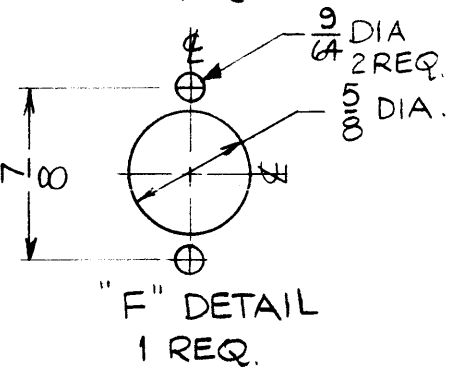
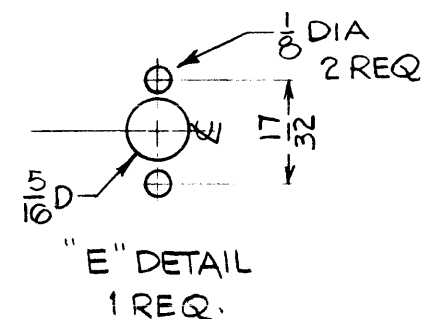
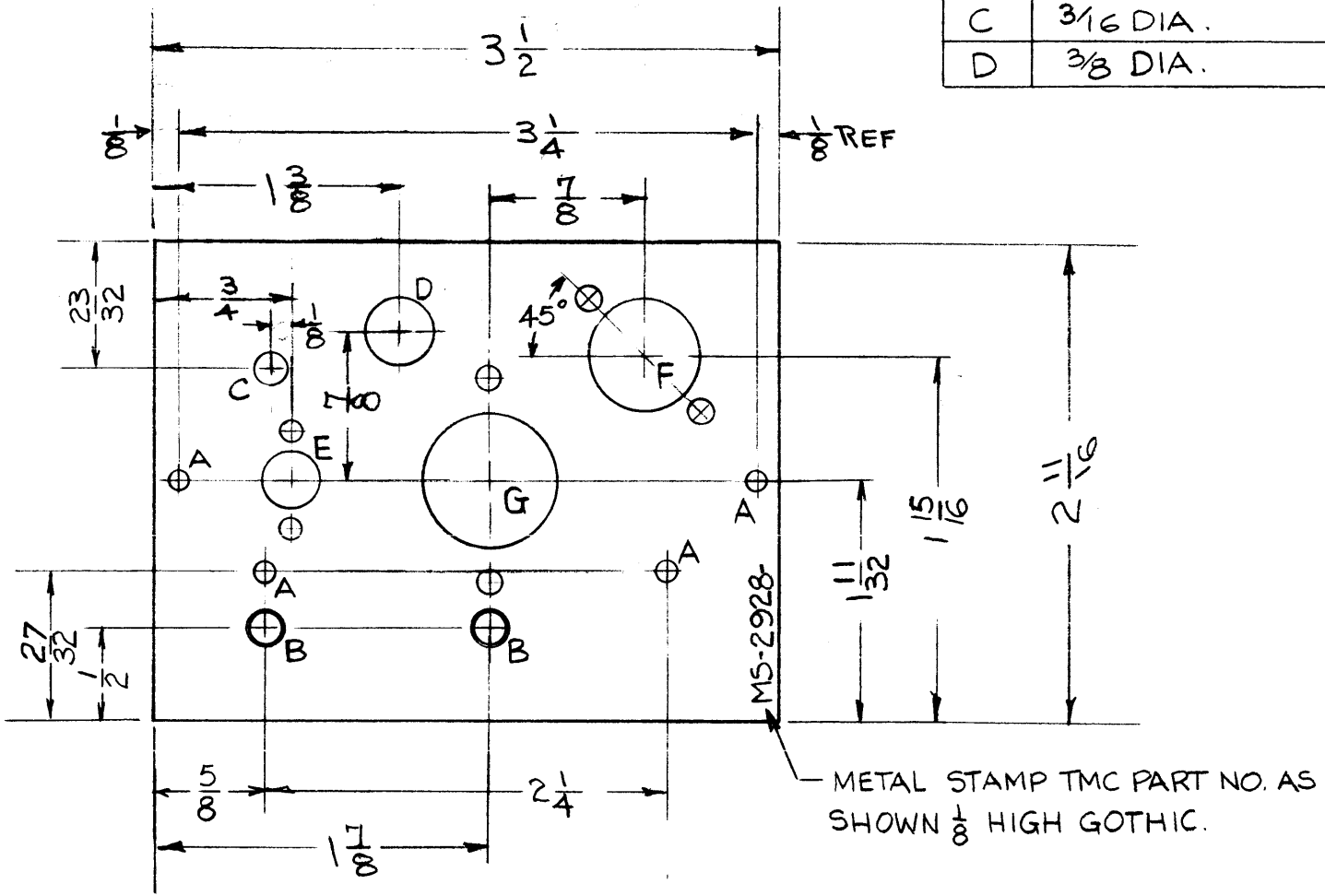
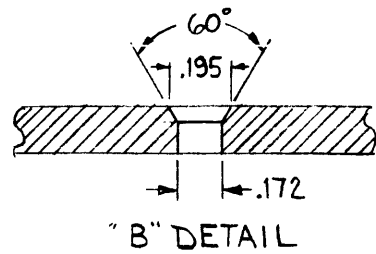


MS-2928

THE CONTENTS OF THIS DRAWING ARE THE EXCLUSIVE PROPERTY OF THE TECHNICAL MATERIEL CORP. ITS UNAUTHORIZED USE OR REPRODUCTION IN WHOLE OR IN PART IS STRICTLY FORBIDDEN.

LEGEND

HOLE	DESCRIPTION	QUAN.
A	5/32 DIA.	4
B	SEE DETAIL	2
C	3/16 DIA.	1
D	3/8 DIA.	1



NOTICE TO PERSONS RECEIVING THIS DRAWING

THE TECHNICAL CORPORATION claims proprietary right in the material disclosed herein. This drawing is issued in confidence for engineering information only and may not be reproduced or used to manufacture anything shown hereon without permission from THE TECHNICAL MATERIEL CORPORATION to the user. This drawing is loaned for mutual assistance and is subject to recall at any time.

Property of:
THE TECHNICAL MATERIEL CORPORATION
MAMARONECK, NEW YORK

REF: LD-1094

REQ.	ITEM	PART NO.	WESCHLER DESCRIPTION	SYMBOL
		.064	THE TECHNICAL MATERIEL CORP. MAMARONECK, NEW YORK	
		ALUMINUM	CHASSIS, ELECTRICAL	
			CRYSTAL, OSC. #2	
		5052-H-32	v.r.r. <i>[Signature]</i>	<i>[Signature]</i>
		S404 YEL IRIDITE	DRAWN	CHECKED
				FINAL APPROVAL
				MS-2928

SYM	DESCRIPTION	DATE	CH. NO.	DRAFTS	CHECKER	ENG. APP.
	UNLESS OTHERWISE SPECIFIED:					
	DIMENSIONS ARE IN INCHES					
	TOLERANCES ON FRACTIONS ± 1/64 DECIMALS ± .05 ANGLES ± 1/2°					
	SCALE:					
	MAXIMUM ALLOWABLE TOLERANCES HAVE BEEN DETERMINED AND ANY DEVIATIONS WILL BE CAUSE FOR REJECTION. REMOVE ALL BURRS AND SHARP EDGES					
		1	AFC-2A			7-26-62
		1	AFC-3			7-26-62
		REQ. PER UNIT	MODEL	SECTION	ASS'Y. NO.	DATE
			USED ON			