

THE CONTENTS OF THIS DRAWING ARE THE EXCLUSIVE PROPERTY OF THE TECHNICAL MATERIEL CORP. ITS UNAUTHORIZED USE OR REPRODUCTION IN WHOLE OR IN PART IS STRICTLY FORBIDDEN.

REQ. PER UNIT

USED ON

MODEL

ASS'Y. NO.

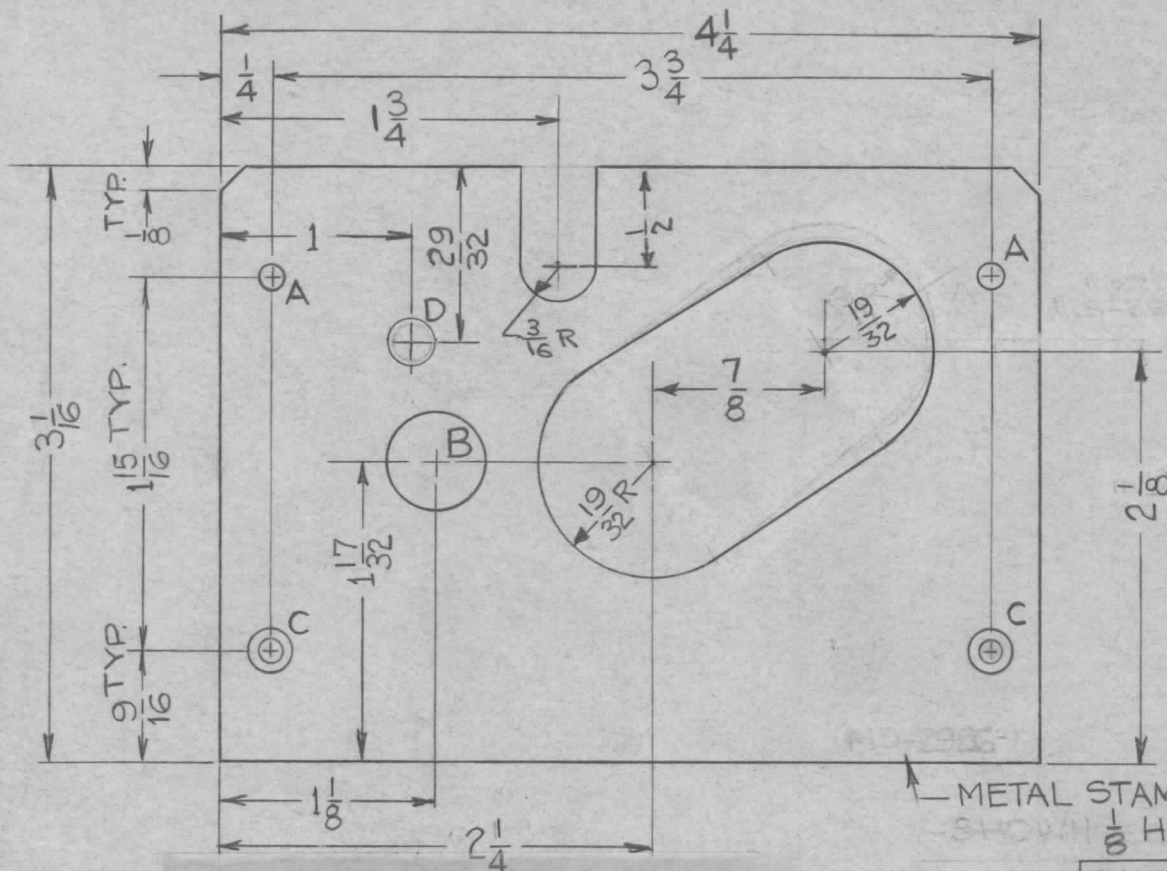
DATE

1

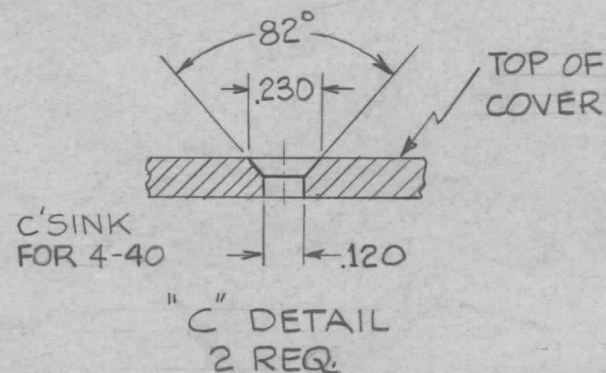
AFC-2A AFC-3

7-26-62

MS-2926 B



HOLE	DESCRIPTION	QUAN.
A	1/8 DIA.	2
B	1/2 DIA.	1
C	SEE DETAIL	2
D	1/4 DIA (SEE CHART)	1



METAL STAMP TMC PART NO. MS-2926-X-B  
SHOWN 1/8 HIGH GOTHIC, (SEE CHART FOR PART NO)

UNLESS OTHERWISE SPECIFIED  
DIMENSIONS ARE IN INCHES AND INCLUDE  
CHEMICALLY APPLIED OR PLATED FINISHES

DECIMALS	FRACTIONS
.X ± .05	± 1/64
.XX ± .01	ANGLES
.XXX ± .005	± 0° 30'

TOLERANCES

CUT HERE  
GUARANTEED  
2-66

TMC PART NO.	LD REF.	DESCRIPTION	REQ.
MS-2926-1	LD-1075	WITH "D" HOLE (AS SHOWN)	1
MS-2926-2	LD-1076	WITH/OUT "D" HOLE	1

REQ.	ITEM	PART NO.	WESCHLER DESCRIPTION	SYMBOL
		.064	THE TECHNICAL MATERIEL CORP. MAMARONECK, NEW YORK	
		ALUMINUM	COVER, OVEN HOUSING	
		MATERIAL		
		5052-H-32	V.R.R. <i>file</i>	<i>BSF</i>
		TYPE & TEMPER	DRAWN	CHECKED
		HEAT TREAT. SPEC.		FINAL APPROVAL
		5404 YEL IRIDITE	<i>     </i>	MS-2926 B
		FINISH & SPEC. NO.	ELEC. DES. APP.	MECH. DES. APP.

UNLESS OTHERWISE SPECIFIED:  
DIMENSIONS ARE IN INCHES  
TOLERANCES ON  
FRAC. ± 1/64 DEC. ± .005 ANGLES ± 1/2°

SCALE: DO NOT SCALE  
MAXIMUM ALLOWABLE TOLERANCES HAVE  
BEEN DETERMINED AND ANY DEVIATIONS  
WILL BE CAUSE FOR REJECTION.  
REMOVE ALL BURRS AND SHARP EDGES