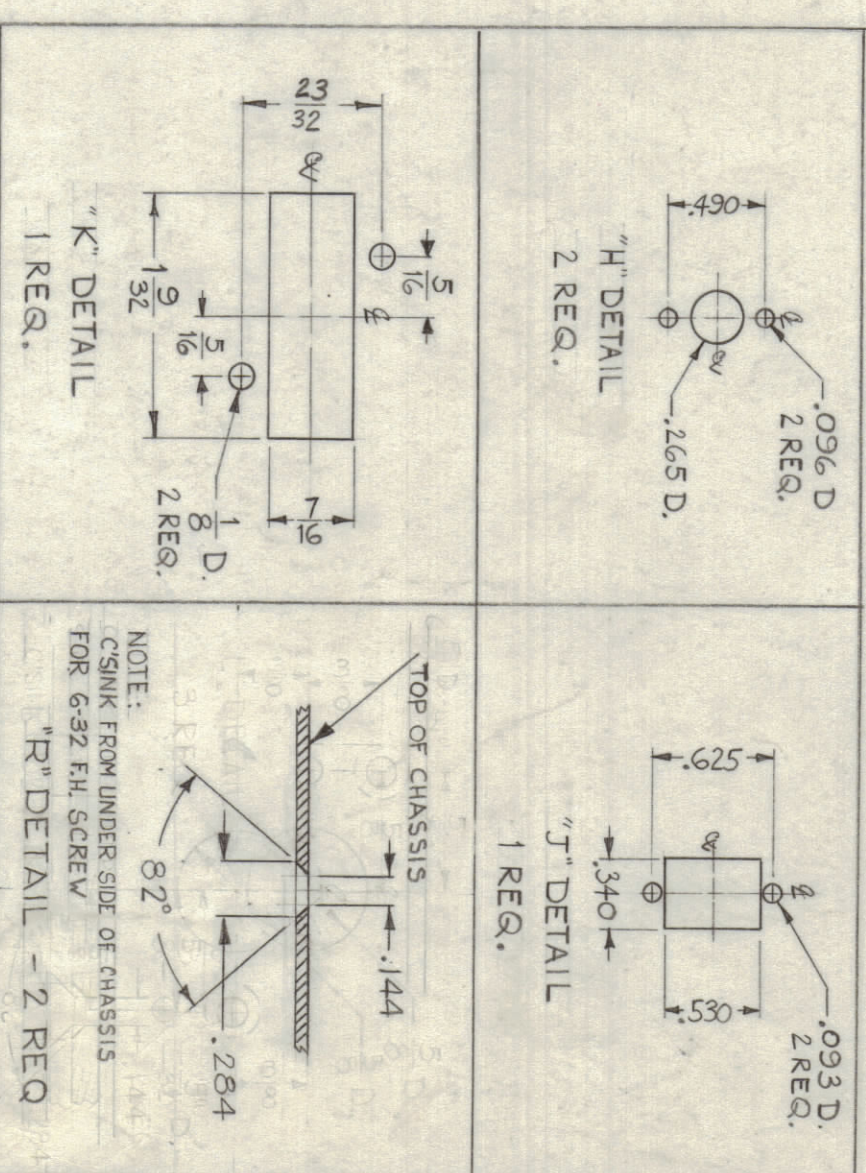
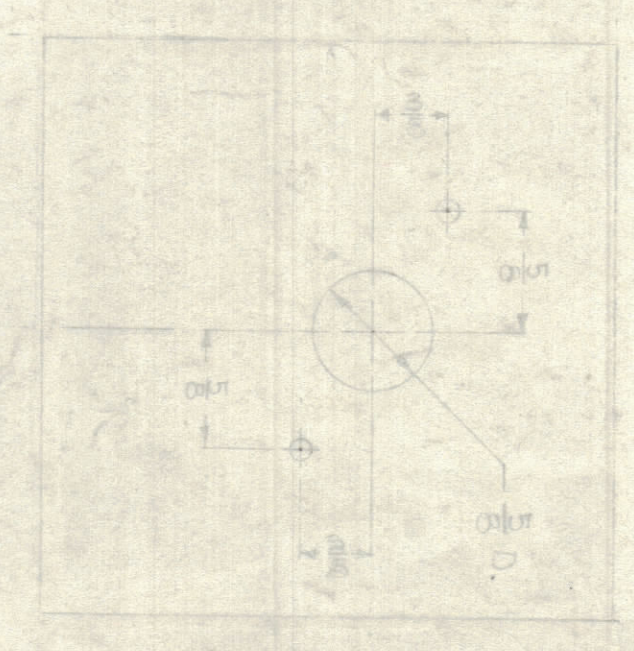
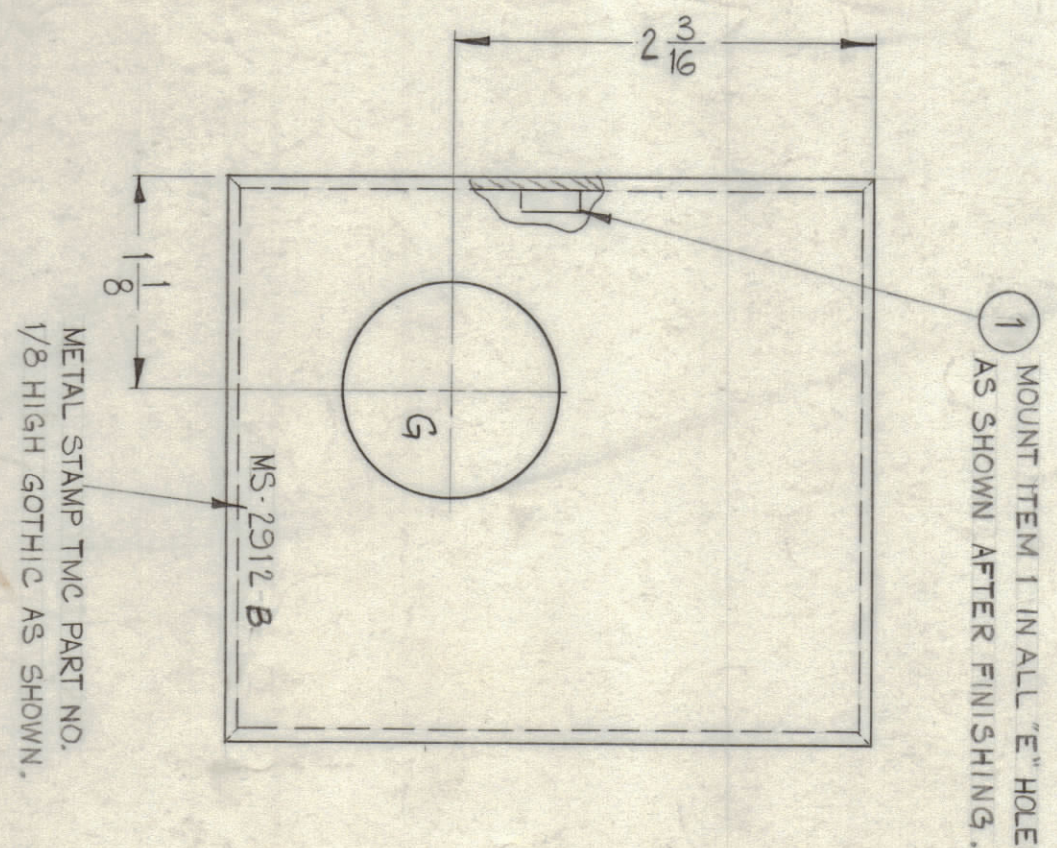
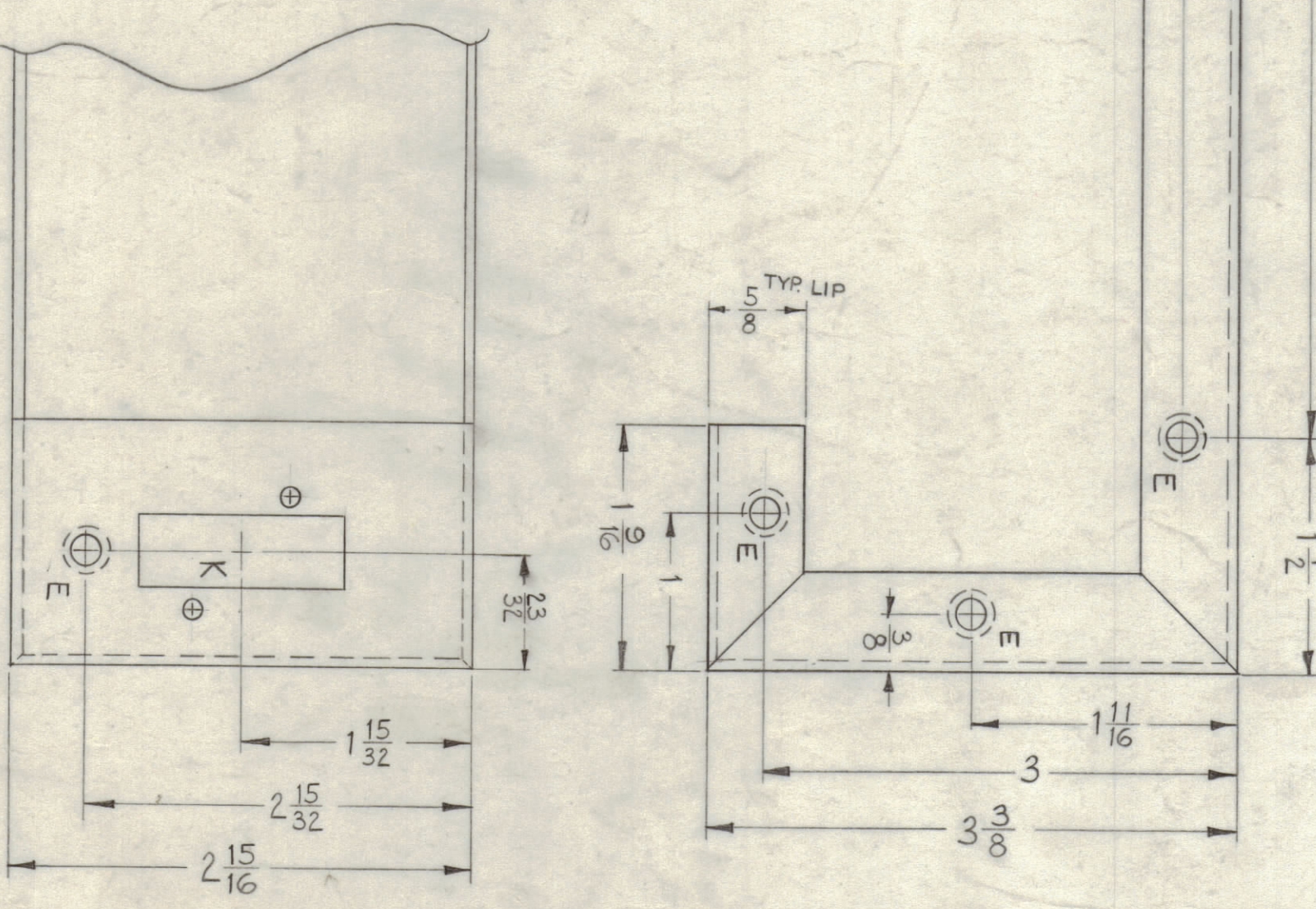
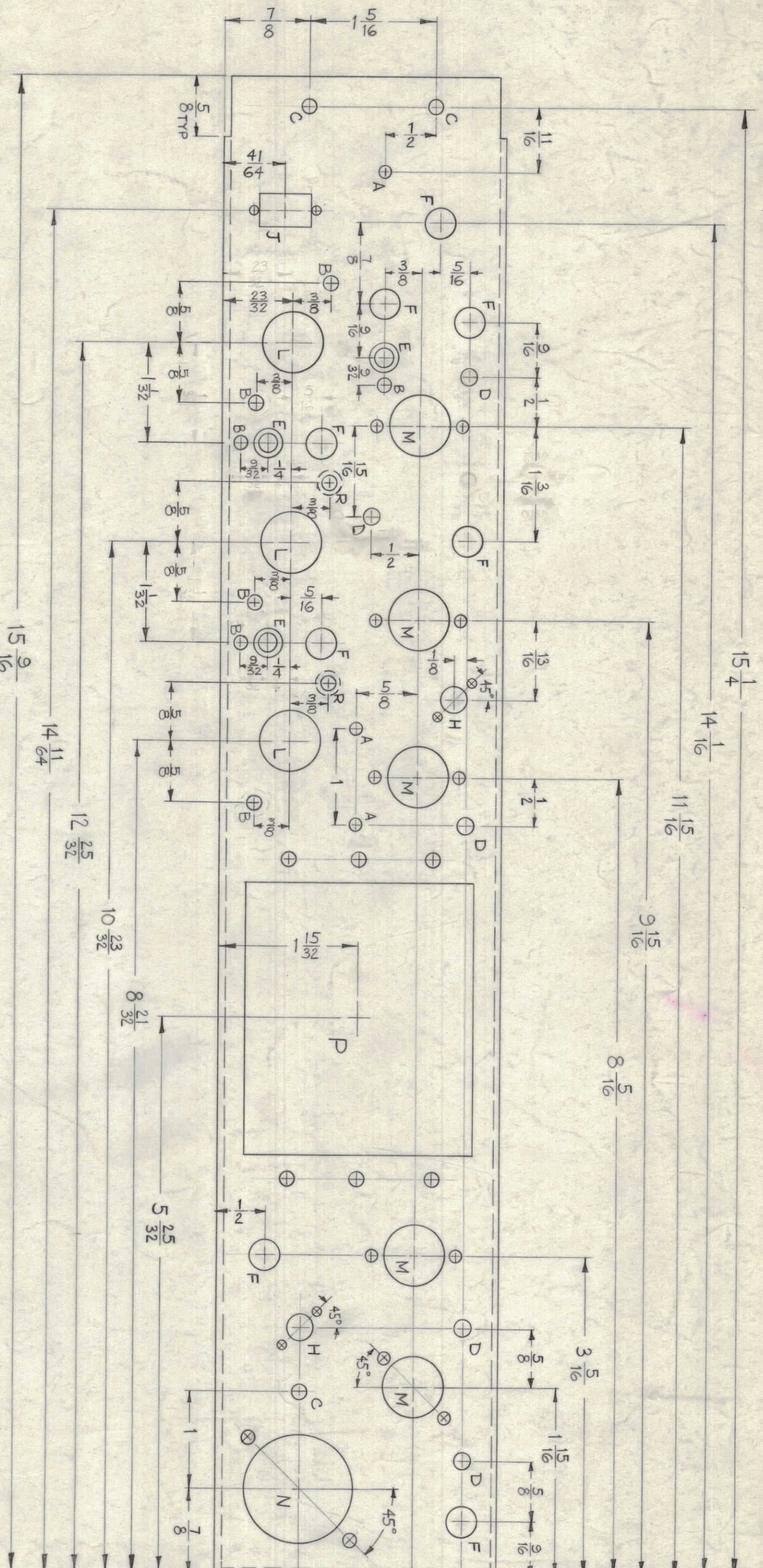


HOLE	DESCRIPTION	REQ.
A	1/8 DIA.	3
B	9/64 DIA.	7
C	5/32 DIA.	3
D	1/66 DIA.	5
E	.191-.194 DIA.	14
F	5/16 DIA.	8
G	1/8 DIA.	1
L	5/8 DIA.	3



REF:
LD-1069 (8) 3200 DECK
LD-1070 (8) 3300 DECK

NO.	ITEM	PART NO.	DESCRIPTION	SYMBOL
5	2	TE-169-1	FEED-THRU TEFLON NUT ROUND SWAGE TYPE	D
14	1	NT-129-632-4	NUT ROUND SWAGE TYPE	E

MATERIAL: ALUMINUM

NO.	ITEM	PART NO.	DESCRIPTION	SYMBOL
1	1	MS-2912	CHASSIS, ELECTRICAL EQUIPMENT	B

SYM.	ZONE	DESCRIPTION	DATE	CHK. NO.	MARKS	CHECKED	APP.
B	EE	ENGINEERING	3-13-63	B184	TBC	[Signature]	[Signature]
A	EL	ELECTRICAL	11-27-62	7629	[Signature]	[Signature]	[Signature]

UNLESS OTHERWISE SPECIFIED:
DIMENSIONS ARE IN INCHES
TOLERANCES ON DECIMALS ± .005
ANGLES ± 1/2°

NOTICE TO PERSONS RECEIVING THIS DRAWING

THE TECHNICAL MATERIAL CORPORATION claims proprietary right in the material disclosed herein. This drawing is issued in confidence for engineering information only and may not be reproduced or used to manufacture anything shown herein without permission from THE TECHNICAL MATERIAL CORPORATION to the user. This drawing is loaned for manual assistance and is subject to recall at any time.

Property of:
THE TECHNICAL MATERIAL CORPORATION
MANHATTAN, NEW YORK