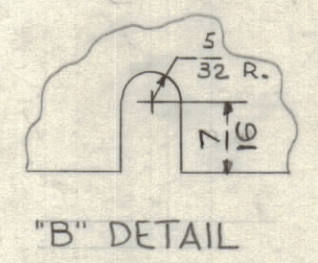


METAL STAMP TMC PART NO. $\frac{1}{8}$ " HIGH GOTHIC AS SHOWN

MS-2907 C

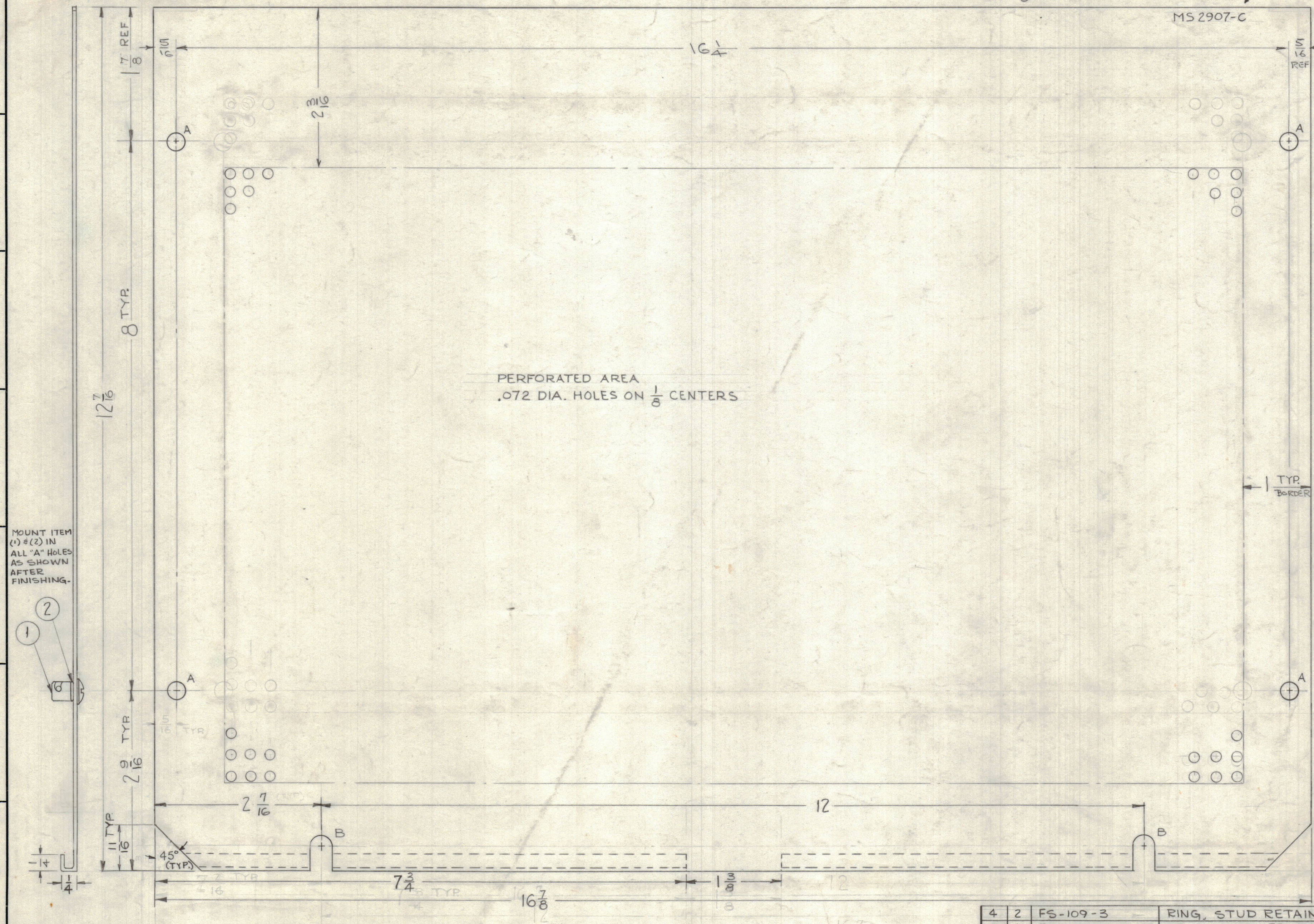
MS 2907-C

LEGEND		
HOLE	DESCRIPTION	REQ
A	1/4 DIA	4
B	SEE DETAIL	2



PERFORATED AREA
.072 DIA. HOLES ON $\frac{1}{8}$ CENTERS

MOUNT ITEM (1) & (2) IN ALL "A" HOLES AS SHOWN AFTER FINISHING.



SYM	ZONE	DESCRIPTION	DATE	CH. NO.	DRAFTS	CHECKER	ENG. APP.
C	B2	BLANK SIZE REF: MS-1775-27, DELETED	4-25-63	8912	gms		
B	B6	7/8 DIM. ADDED TO BOTTOM LIP	3-7-63	8397	RC		
A	B2	ITEMS (1) & (2) ADDED	1-10-63	7958			

UNLESS OTHERWISE SPECIFIED:
DIMENSIONS ARE IN INCHES
TOLERANCES ON FRACTIONS $\pm 1/64$ DECIMALS $\pm .005$ ANGLES $\pm 1/2^\circ$

SCALE FULL (DO NOT SCALE)

MAXIMUM ALLOWABLE TOLERANCES HAVE BEEN DETERMINED AND ANY DEVIATIONS WILL BE CAUSE FOR REJECTION. REMOVE ALL BURRS & SHARP EDGES

REQ. PER UNIT	MODEL	SECTION	ASS'Y. NO.	DATE
1	HNF-1			7-26-62

4	2	FS-109-3	RING, STUD RETAINING	A
4	1	FS-110-1	STUD, SLOTTED HEAD	A
REQ. ITEM		PART NO.	DESCRIPTION	SYMBOL
			M. GELLMAN	
		.051	THE TECHNICAL MATERIEL CORP.	
		STOCK SIZE	MAMARONECK, NEW YORK	
		ALUMINUM, PERF.	COVER, BOTTOM	
		MATERIAL		
		5052-H32	gms	BP
		TYPE & TEMPER	DRAWN	CHECKED
		HEAT TREAT. SPEC.		
		S-404 YELLOW IRIDITE		
		FINISH & SPEC. NO.	ELEC. DES. APP.	MECH. DES. APP.
			MS-2907 C	
			SHEET OF	